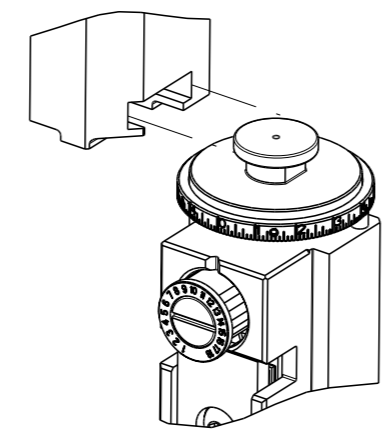


| PART NUMBER | REVISION | DESCRIPTION | FEED TYPE |
|-------------|----------|----------------------------------|------------|
| 2150187-1 | C | FINE CRIMP HEIGHT ADJUST | MECHANICAL |
| 2150187-2 | C | FINE CRIMP HEIGHT ADJUST | PNEUMATIC |
| 7-2150187-1 | C | MECHANICAL AND CRIMP TOOLING KIT | MECHANICAL |
| 7-2150187-2 | C | PNEUMATIC AND CRIMP TOOLING KIT | PNEUMATIC |
| 7-2150187-7 | A | CRIMP TOOLING KIT | - |

ATLANTIC VERSION TERMINATOR INTERFACE ADAPTER



| APPLICATOR DATA | | |
|-----------------|----------------|------|
| CRIMP | SIZE | TYPE |
| WIRE | 3.05 mm [.120] | F |
| INSUL | 4.57 mm [.180] | F |

APPLICATOR INSTRUCTIONS 408-35043

| TERMINAL DATA: TE TERMINAL | | TE CRIMP SPECIFICATION | |
|------------------------------------|-------------|------------------------------|-------------|
| TERMINAL NAME: RING | | | |
| WIRE STRIP LENGTH | | INSULATION DIAMETER RANGE | |
| .204-.234 IN [5.18-5.94 mm] | | ∅.105-.145 IN [2.67-3.68 mm] | |
| TERMINAL APPLICATION SPECIFICATION | 114-2084 | | |
| TERMINALS APPLIED | | | |
| TE TERMINAL | TE TERMINAL | TE TERMINAL | TE TERMINAL |
| 63482-1 | 63482-2 | | |

| WIRE SIZE | CRIMP HEIGHT mm [INCH] | CRIMP HEIGHT REFERENCE SETTING |
|-----------|-----------------------------|--------------------------------|
| 14 AWG | 2.31+/-0.05 [0.091+/-0.002] | 6.3 |
| 16 AWG | 2.11+/-0.05 [0.083+/-0.002] | 8.7 |
| 18 AWG | 1.98+/-0.05 [0.078+/-0.002] | 10.1 |

- 1 RECOMMENDED SPARE PARTS
- 2 REFER TO SUPPLIED INSTRUCTION SHEET FOR CLEANING, LUBRICATION AND STORAGE OF APPLICATOR.
- 3 APPLY PART NUMBER 1-23419-5 LOCTITE TO THREADS OF ITEMS 50. APPLY PART NUMBER 2-23419-6 LOCTITE TO THREADS OF ITEM 242.
- 4 CRIMP HEIGHT REFERENCE SETTING WAS THE SETTING USED WHEN THE APPLICATOR WAS QUALIFIED AT THE FACTORY. ADJUSTMENT MAY BE NECESSARY WHEN RUNNING APPLICATOR IN THE FIELD.
- 5. UNLESS SPECIFIED OTHERWISE TORQUE VALUES SHALL BE USED PER DOCUMENT, 101-35000.

***WARNING**
ON INSTALLATION, SET WIRE DISC TO CRIMP HEIGHT REFERENCE SETTING FOR LARGEST WIRE SIZE. CRIMP HEIGHT REFERENCE SETTINGS GREATER THAN THE VALUE SHOWN MAY CAUSE DAMAGE TO THE CRIMP TOOLING, REFER TO THE INSTRUCTION SHEET FOR PROPER SETUP AND ADJUSTMENTS.

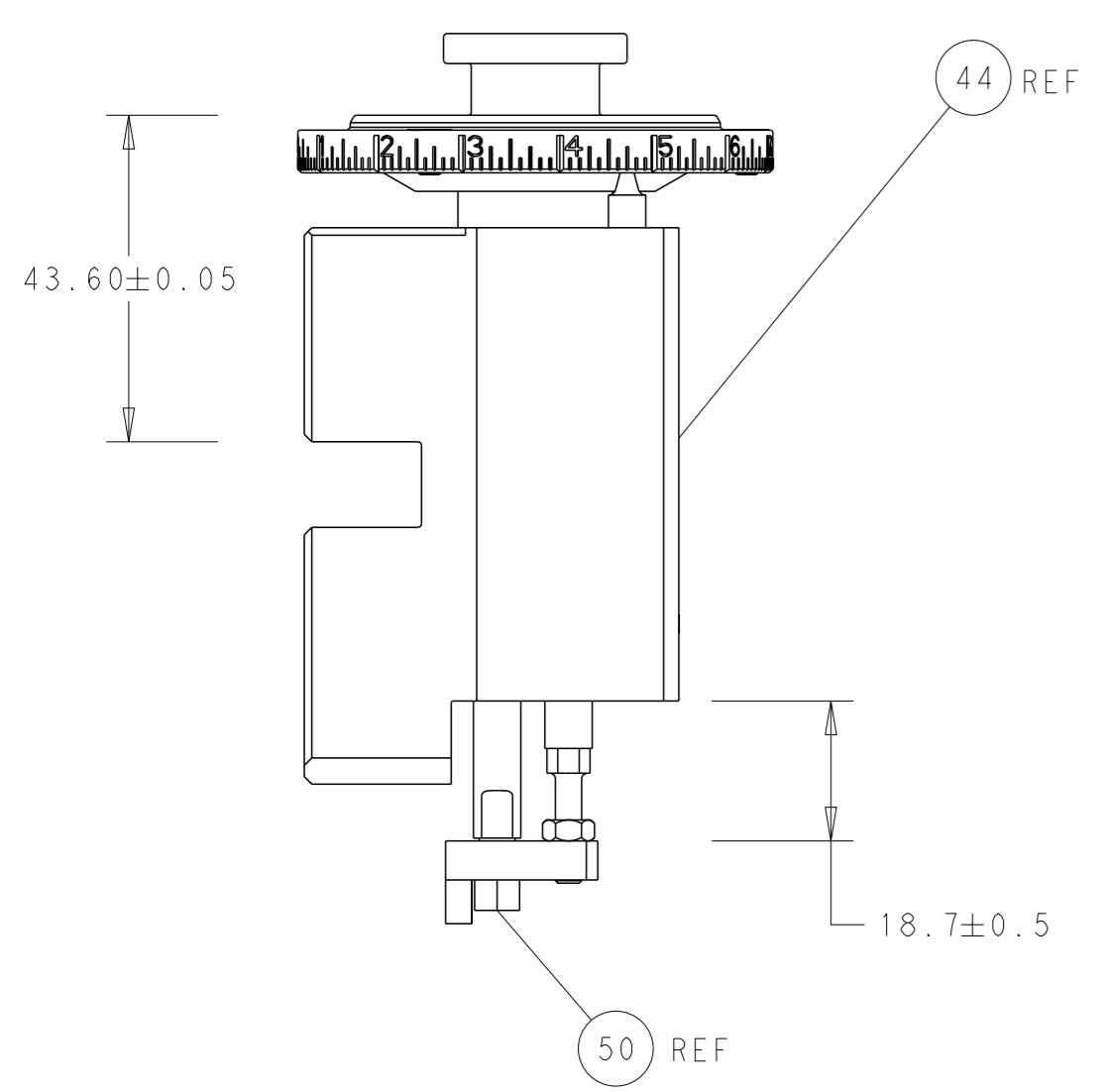
ATLANTIC VERSION
Shown on sheets 1 of 4 & 2 of 4
(Pacific version shown on sheets 3 of 4 & 4 of 4)

| LOC | DIST | REVISIONS | | | | | |
|-----|------|-----------|-----|---------------|-----------|-----|------|
| | | P | LYR | DESCRIPTION | DATE | OWN | APVD |
| A | 66 | B | | ECR-14-013887 | 17SEP2014 | MR | GB |
| | | C | | ECR-20-001846 | 10FEB2020 | FJ | TE |

| | | | | | | | | |
|---|-----|-----|-----|-----|-------------|-------------------------------------|-------------|---------|
| - | 1 | - | 1 | - | 2119641-1 | FEED CAM, AIR FEED | 248 | |
| - | 1 | 1 | 1 | 1 | 2119082-9 | CAM, SNAIL, INSULATION ADJUSTMENT | 244 | |
| - | 1 | 1 | 1 | 1 | 2079764-1 | WASHER, WAVE SPRING, CREST-TO-CREST | 243 | |
| - | 1 | 1 | 1 | 1 | 2119083-1 | RETAINER, INSULATION DIAL | 242 | |
| - | - | 1 | - | 1 | 2119580-1 | MECHANICAL FEED ASSEMBLY | 239 | |
| - | 1 | - | 1 | - | 2844940-3 | AIR FEED MODULE | 238 | |
| - | 1 | 1 | 1 | 1 | 1-18028-0 | WASHER, FLAT, REG M8 | 192 | |
| - | 1 | 1 | 1 | 1 | 6-993111-6 | PIN, SLOTTED SPRING 3.0 X 14.0 | 177 | |
| - | 1 | 1 | 1 | 1 | 8-22280-7 | SPRING, COMPRESSION | 176 | |
| - | 1 | 1 | 1 | 1 | 1752353-2 | GUIDE PIN,HOLDDOWN | 175 | |
| - | 1 | 1 | 1 | 1 | 1901680-2 | GUIDE PIN,HOLDDOWN | 174 | |
| - | REF | REF | REF | REF | 994970-2 | COUNTER, MAGNETIC | 164 | |
| - | 1 | 1 | 1 | 1 | 455888-4 | SPACER, CRIMPER | 82 | |
| - | 1 | 1 | 1 | 1 | 1803607-4 | DOCUMENTATION PACKAGE | 71 | |
| - | 2 | 2 | 2 | 2 | 2-18032-2 | SCR, SET, FLT PNT, M3 X 10.0 | 70 | |
| - | 1 | 1 | 1 | 1 | 2119740-1 | TAG, IDENTIFICATION | 67 | |
| - | 2 | 2 | 2 | 2 | 2168078-1 | SCREW, DRIVE, RH, RoHS, 2 x .188 | 66 | |
| - | 1 | 1 | 1 | 1 | 1901681-5 | HOLDDOWN, TERMINAL | 65 | |
| - | 1 | 1 | 1 | 1 | 2168083-2 | SCR, SKT HD CAP, RoHS, M4 X 8.0 | 60 | |
| - | 1 | 1 | 1 | 1 | 5-18022-5 | SCR, HEX HD CAP, M4 X 6.0 | 59 | |
| - | - | 1 | - | 1 | 2063961-1 | FEED FINGER | 58 | |
| - | 4 | 4 | 4 | 4 | 2168400-4 | SHCS, LOW HEAD, RoHS, M4 X 8 | 57 | |
| - | 2 | 2 | 2 | 2 | 2168083-3 | SCR, SKT HD CAP, RoHS, M4 X 12.0 | 56 | |
| - | 2 | 2 | 2 | 2 | 5018030-1 | NUT, HEX, REG, RoHS, M3 | 54 | |
| - | 2 | 2 | 2 | 2 | 986965-8 | NUT, LOCK, HEX, TORQUE (M4) | 53 | |
| - | 1 | 1 | 1 | 1 | 1-5018030-0 | NUT, HEX, REG, RoHS, M3.5 | 52 | |
| - | 1 | - | 1 | - | 2063961-1 | FEED FINGER | 51 | |
| - | 1 | 1 | 1 | 1 | 1752354-1 | STANDOFF,HOLD-DOWN | 50 | |
| - | 1 | 2 | 1 | 2 | 18023-9 | SCR, SKT HD CAP M4 X 6.0 | 49 | |
| - | - | 1 | - | 1 | 2119652-1 | FEED CAM, PRE FEED | 48 | |
| - | - | 1 | - | 1 | 2119653-1 | FEED CAM, POST FEED | 47 | |
| - | 1 | 1 | 1 | 1 | 2119655-5 | APPLICATOR BASIC ASSEMBLY, EF | 46 | |
| - | 1 | 1 | 1 | 1 | 1803517-1 | RAM ASSEMBLY, EF ATLANTIC | 44 | |
| - | 1 | 1 | 1 | 1 | 1803602-1 | SCR, BHSC, RoHS (M8 X 25) | 41 | |
| - | 8 | 8 | 8 | 8 | 1-18028-2 | WASHER, FLAT, REG M4 | 33 | |
| - | 2 | 2 | 2 | 2 | 2168083-9 | SCR, SKT HD CAP, RoHS, M4 X 20 | 31 | |
| - | 2 | 2 | 2 | 2 | 2168083-2 | SCR, SKT HD CAP, RoHS, M4 X 8.0 | 29 | |
| - | 1 | 1 | 1 | 1 | 240639-1 | STRIPPER (MACHINING) | 27 | |
| - | 2 | 2 | 2 | 2 | 1-2168083-5 | SCR, SKT HD CAP, RoHS, M4 X 30 | 25 | |
| - | 1 | 1 | 1 | 1 | 1752371-5 | PLATE, STRIP GUIDE | 24 | |
| - | 2 | 2 | 2 | 2 | 2-22281-3 | SPRING, COMPRESSION | 22 | |
| - | 1 | 1 | 1 | 1 | 1803292-1 | DRAG | 20 | |
| - | 1 | 1 | 1 | 1 | 1-1901696-5 | STRIP GUIDE, REAR | 19 | |
| - | 1 | 1 | 1 | 1 | 1-1901695-5 | STRIP GUIDE, FRONT | 18 | |
| - | 4 | 4 | 4 | 4 | 1-2079383-1 | SCR, BHSC, RoHS (M6 X 12) | 17 | |
| - | 1 | 1 | 1 | 1 | 8-240641-6 | SPACER | 16 | |
| - | 1 | 1 | 1 | 1 | 1752360-1 | SPACER,HOLD-DOWN | 13 | |
| - | 1 | 1 | 1 | 1 | 240833-7 | PLATE, REAR SHEAR | 11 | |
| - | - | - | - | - | - | - | 10 | |
| - | 1 | 1 | 1 | 1 | 1-690496-5 | PLATE, FRONT SHEAR | 9 | |
| - | 1 | 2 | 2 | 1 | 1-1333220-7 | ANVIL, COMBINATION, .120 | 8 | |
| - | 1 | 1 | 1 | 1 | 690474-6 | BLADE, SLUG | 7 | |
| - | 1 | 1 | 1 | 1 | 240641-1 | SPACER | 5 | |
| - | 1 | 1 | 1 | 1 | 238011-2 | BLOCK, CRIMPER SPACER | 4 | |
| - | 1 | 2 | 2 | 1 | 2119582-3 | CRIMPER, INSULATION F PREMIUM | 3 | |
| - | 1 | 1 | 1 | 1 | 455888-4 | SPACER, CRIMPER | 2 | |
| - | 1 | 2 | 2 | 1 | 1-456409-5 | CRIMPER, WIRE .120 "F" PREMIUM | 1 | |
| - | 77 | 72 | 71 | 2 | -1 | PART NO | DESCRIPTION | ITEM NO |

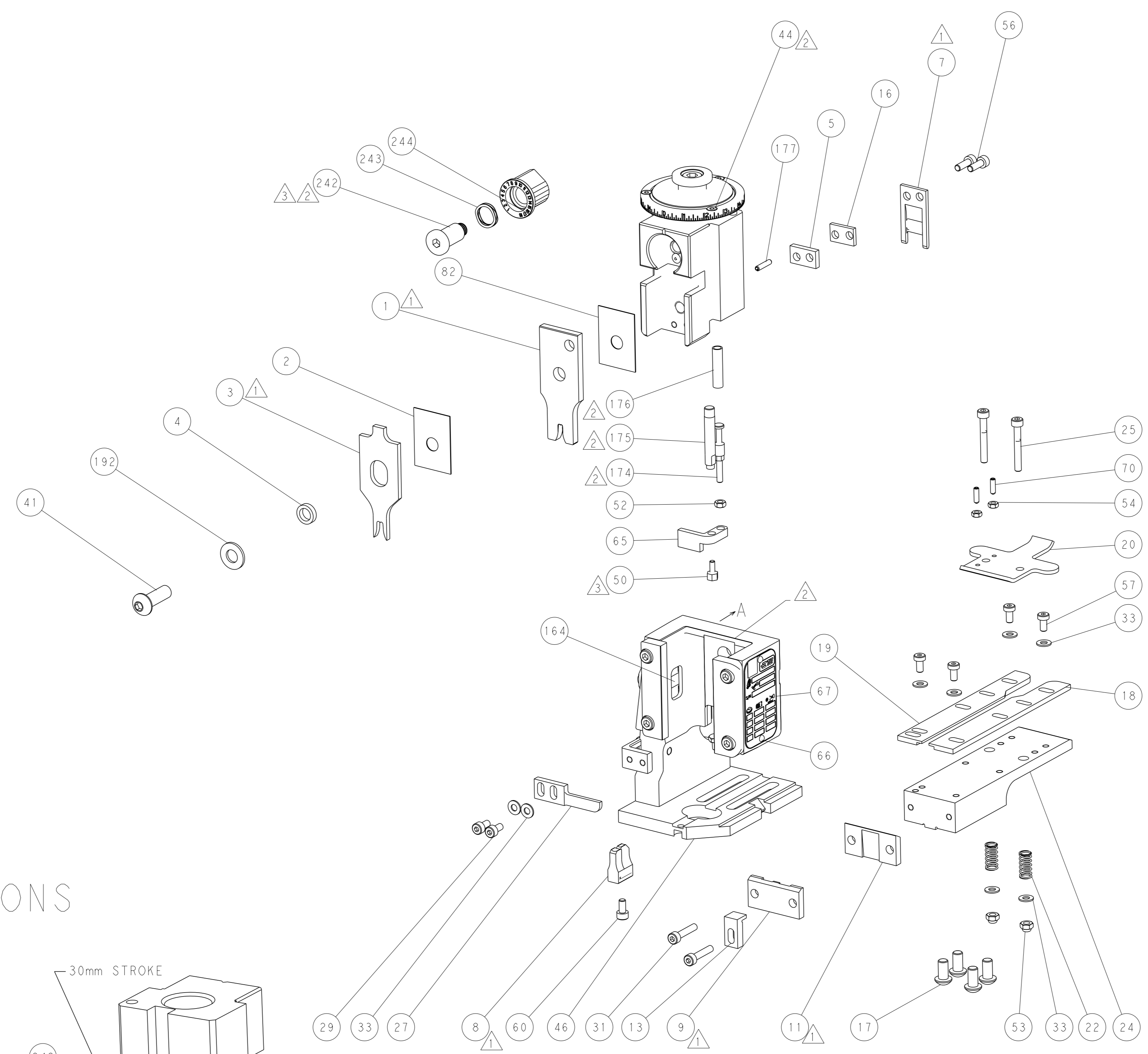
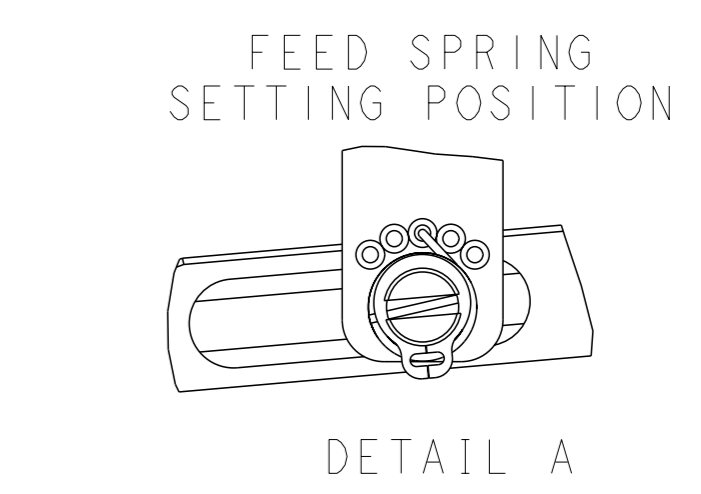
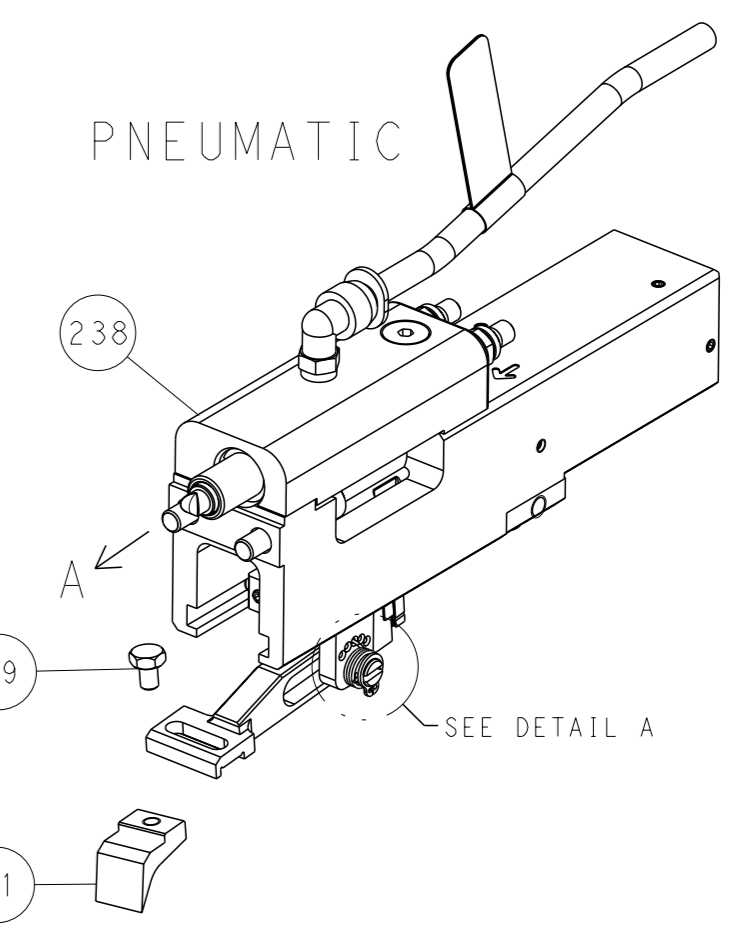
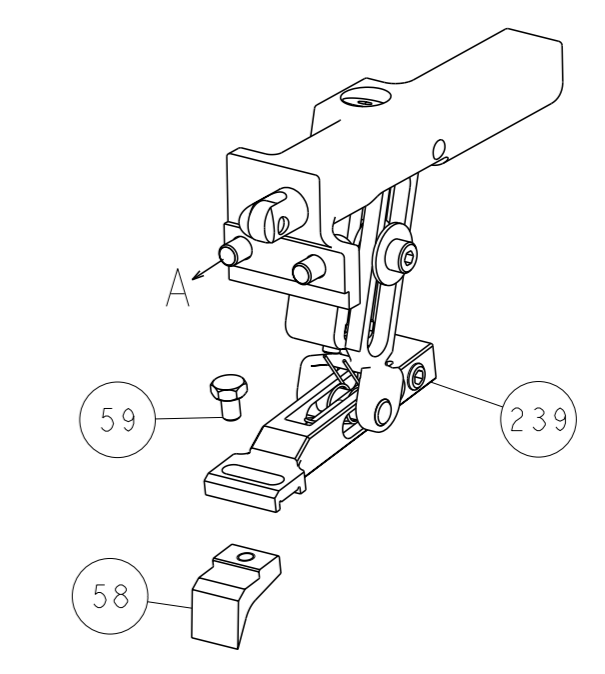
| | | | | | | | |
|-----------------|--|--|--|--|--|---|--|
| DIMENSIONS: | | TOLERANCES UNLESS OTHERWISE SPECIFIED: 0 PLC ± 1 PLC ± 2 PLC ± 3 PLC ± 4 PLC ± ANGLES FINISH ± | | DWN C. CHEN 28FEB2012 CHK S. XI 28FEB2012 APVD J. CRUZ 28FEB2012 PRODUCT SPEC APPLICATION SPEC WEIGHT CUSTOMER ACCESSIBLE PRODUCTION DRAWING | | TE Connectivity Harrisburg, PA 17105-3608 NAME Ocean End Feed Applicator SIZE CAGE CODE DRAWING NO RESTRICTED TO A1 00779 C=2150187 SCALE 1:1 SHEET 1 OF 4 REV C | |
|-----------------|--|--|--|--|--|---|--|

| LOC | DIST | REVISIONS | | | |
|-----|------|-----------|-------------|-----|------|
| A | 66 | REV | DATE | OWN | APVD |
| | | - | SEE SHEET 1 | - | - |

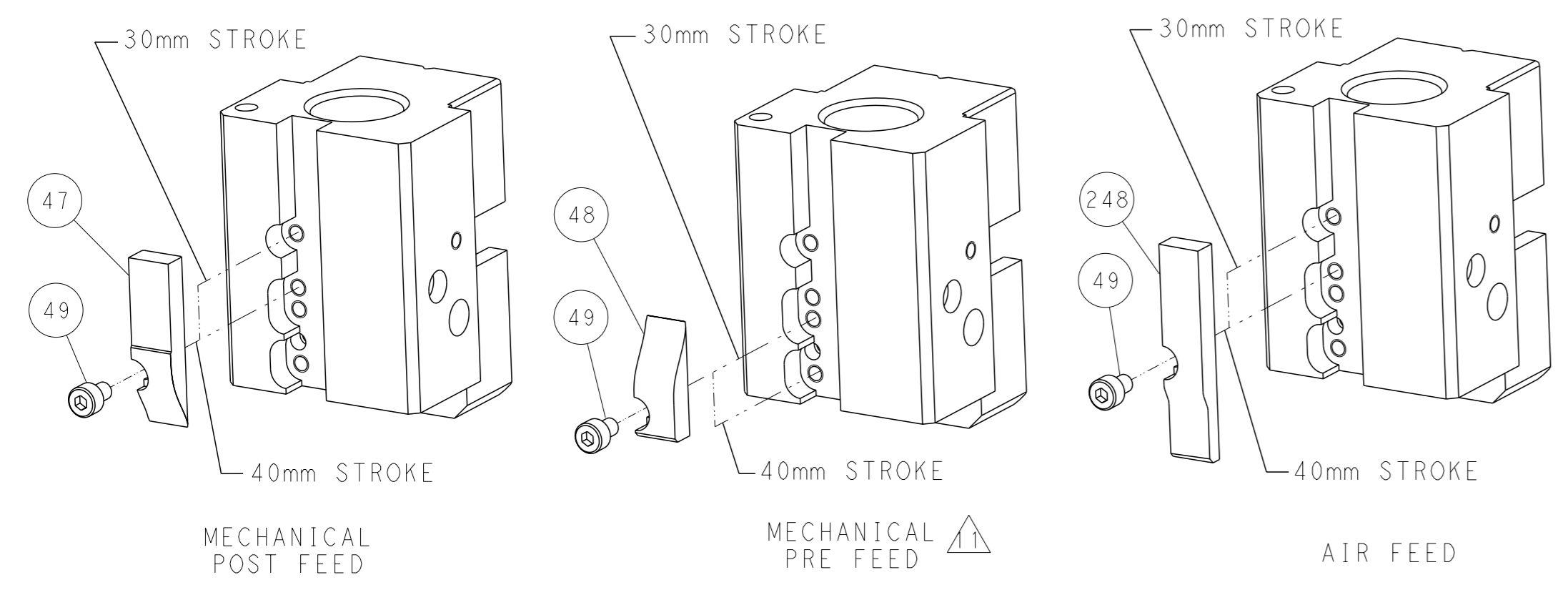


RAM AND HOLDDOWN SET-UP

FEED TYPE
MECHANICAL



CAM POSITIONS

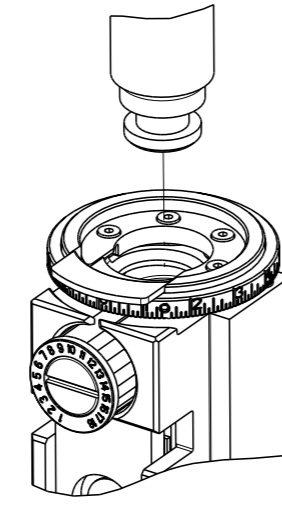


ATLANTIC VERSION
 Shown on sheets 1 of 4 & 2 of 4
 (Pacific version shown on sheets 3 of 4 & 4 of 4)

| | | | | |
|---|-----------|---|---|---------------------------------|
| <small>THIS DRAWING IS UNPUBLISHED. RELEASED FOR PUBLICATION. 20 BY TYCO ELECTRONICS CORPORATION. ALL RIGHTS RESERVED.</small> | | OWN: S. CHEN CHK: S. XI APVD: J. CRUZ | DATE: 28FEB2012 DATE: 28FEB2012 DATE: 28FEB2012 | NAME: Ocean End Feed Applicator |
| DIMENSIONS: mm TOLERANCES UNLESS OTHERWISE SPECIFIED: 0 PLC ±0.5 1 PLC ±0.13 2 PLC ±0.13 3 PLC ±0.013 4 PLC ±0.0013 ANGLES FINISH: * | MATERIAL: | WEIGHT: | SCALE: 1:1 SHEET: 2 of 4 REV: C | RESTRICTED TO: |

| THIS DRAWING IS UNPUBLISHED. | RELEASED FOR PUBLICATION | 20 | |
|--|--------------------------|--------------------------|------------|
| COPYRIGHT 20 BY TYCO ELECTRONICS CORPORATION. ALL RIGHTS RESERVED. | | | |
| PART NUMBER | REVISION | DESCRIPTION | FEED TYPE |
| 2-2150187-1 | C | FINE CRIMP HEIGHT ADJUST | MECHANICAL |
| 2-2150187-2 | C | FINE CRIMP HEIGHT ADJUST | PNEUMATIC |
| 7-2150187-7 | A | CRIMP TOOLING KIT | - |

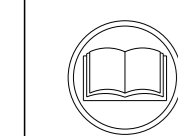
PACIFIC VERSION TERMINATOR
INTERFACE ADAPTER



| APPLICATOR DATA | | |
|--------------------------------------|----------------|------|
| CRIMP | SIZE | TYPE |
| WIRE | 3.05 mm [.120] | F |
| INSUL | 4.57 mm [.180] | F |
| APPLICATOR INSTRUCTIONS 408-35043 | | |

| TERMINAL DATA: TE TERMINAL | | TE CRIMP SPECIFICATION | |
|--|-------------|---|-------------|
| TERMINAL NAME: RING | | | |
| WIRE STRIP LENGTH .204-.234 IN [5.18-5.94 mm] | | INSULATION DIAMETER RANGE Ø.105-.145 IN [2.67-3.68 mm] | |
| TERMINAL APPLICATION SPECIFICATION | 114-2084 | - | - |
| TERMINALS APPLIED | | | |
| TE TERMINAL | TE TERMINAL | TE TERMINAL | TE TERMINAL |
| 63482-1 | 63482-2 | | |

| WIRE SIZE | CRIMP HEIGHT mm [INCH] | CRIMP HEIGHT REFERENCE SETTING |
|-----------|----------------------------|--------------------------------|
| 14 AWG | 2.31+/-0.05 [.091+/-0.002] | 6.3 |
| 16 AWG | 2.11+/-0.05 [.083+/-0.002] | 8.7 |
| 18 AWG | 1.98+/-0.05 [.078+/-0.002] | 10.1 |



- 1 RECOMMENDED SPARE PARTS
- 2 REFER TO SUPPLIED INSTRUCTION SHEET FOR CLEANING, LUBRICATION AND STORAGE OF APPLICATOR.
- 3 APPLY PART NUMBER 1-23419-5 LOCTITE TO THREADS OF ITEMS 50. APPLY PART NUMBER 2-23419-6 LOCTITE TO THREADS OF ITEM 242.
- 4 CRIMP HEIGHT REFERENCE SETTING WAS THE SETTING USED WHEN THE APPLICATOR WAS QUALIFIED AT THE FACTORY. ADJUSTMENT MAY BE NECESSARY WHEN RUNNING APPLICATOR IN THE FIELD.
- 5. UNLESS SPECIFIED OTHERWISE TORQUE VALUES SHALL BE USED PER DOCUMENT, 101-35000.

***WARNING**
ON INSTALLATION, SET WIRE DISC TO CRIMP HEIGHT REFERENCE SETTING FOR LARGEST WIRE SIZE. CRIMP HEIGHT REFERENCE SETTINGS GREATER THAN THE VALUE SHOWN MAY CAUSE DAMAGE TO THE CRIMP TOOLING, REFER TO THE INSTRUCTION SHEET FOR PROPER SETUP AND ADJUSTMENTS.

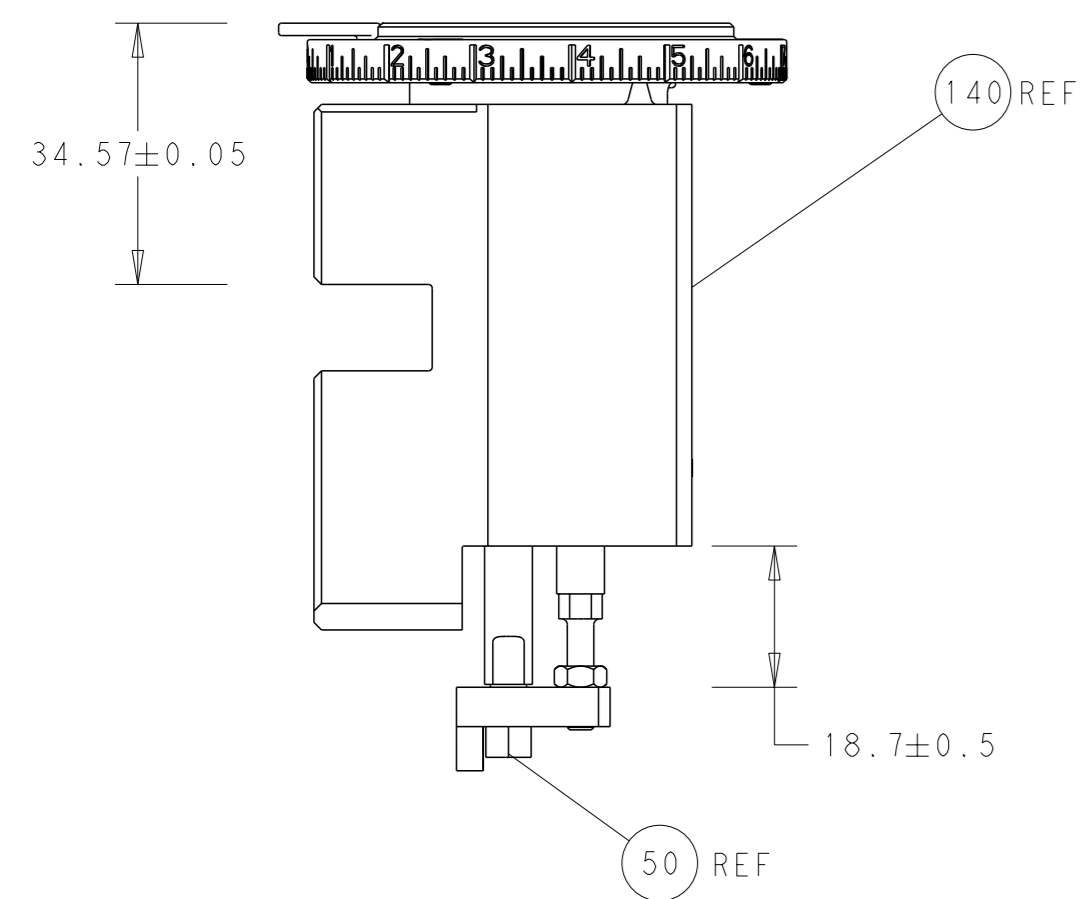
PACIFIC VERSION
Shown on sheets 3 of 4 & 4 of 4
(Atlantic version shown on sheets 1 of 4 & 2 of 4)

| LOC | DIST | REVISIONS | | | |
|-----|------|-------------|------|----|------|
| A | 66 | REV | DATE | BY | APPV |
| | | - | | | |
| | | SEE SHEET 1 | | | |

| | | | | | | |
|---|---|-----|-----|-------------|-------------------------------------|---------|
| 3 | - | 1 | 1 | 2119082-9 | CAM, SNAIL, INSULATION ADJUSTMENT | 244 |
| | - | 1 | 1 | 2079764-1 | WASHER, WAVE SPRING, CREST-TO-CREST | 243 |
| | - | 1 | 1 | 2119083-1 | RETAINER, INSULATION DIAL | 242 |
| | - | - | 1 | 2119580-1 | MECHANICAL FEED ASSEMBLY | 239 |
| | - | 1 | - | 2844940-3 | AIR FEED MODULE | 238 |
| | - | 1 | 1 | 1-18028-0 | WASHER, FLAT, REG M8 | 192 |
| | - | 4 | 4 | 2079383-9 | SCR, BHSC, RoHS (M6 X 20) | 186 |
| | - | 1 | 1 | 6-993111-6 | PIN, SLOTTED SPRING 3.0 X 14.0 | 177 |
| | - | 1 | 1 | 8-22280-7 | SPRING, COMPRESSION | 176 |
| | - | 1 | 1 | 1752353-2 | GUIDE PIN, HOLDDOWN | 175 |
| | - | 1 | 1 | 1901680-2 | GUIDE PIN, HOLDDOWN | 174 |
| | - | REF | REF | 994970-2 | COUNTER, MAGNETIC | 164 |
| | - | 1 | - | 2119641-2 | FEED CAM, AIR FEED | 152 |
| | - | 1 | 1 | 2168083-8 | SCR, SKT HD CAP, RoHS, M4 X 16 | 144 |
| | - | - | 1 | 2119653-2 | FEED CAM, POST FEED | 142 |
| | - | 1 | 1 | 2119655-6 | APPLICATOR BASIC ASSEMBLY, EF | 141 |
| | - | 1 | 1 | 1803518-1 | RAM ASSEMBLY, EF PACIFIC | 140 |
| | - | 1 | 1 | 455888-4 | SPACER, CRIMPER | 82 |
| | - | 1 | 1 | 1803607-4 | DOCUMENTATION PACKAGE | 71 |
| | - | 2 | 2 | 2-18032-2 | SCR, SET, FLT PNT, M3 X 10.0 | 70 |
| | - | 1 | 1 | 2119740-1 | TAG, IDENTIFICATION | 67 |
| | - | 2 | 2 | 2168078-1 | SCREW, DRIVE, RH, RoHS, 2 x .188 | 66 |
| | - | 1 | 1 | 1901681-5 | HOLDDOWN, TERMINAL | 65 |
| | - | 1 | 1 | 5-18022-5 | SCR, HEX HD CAP, M4 X 6.0 | 59 |
| | - | - | 1 | 2063961-1 | FEED FINGER | 58 |
| | - | 4 | 4 | 2168400-4 | SHCS, LOW HEAD, RoHS, M4 X 8 | 57 |
| | - | 2 | 2 | 2168083-3 | SCR, SKT HD CAP, RoHS, M4 X 12.0 | 56 |
| | - | 2 | 2 | 5018030-1 | NUT, HEX, REG, RoHS, M3 | 54 |
| | - | 2 | 2 | 986965-8 | NUT, LOCK, HEX, TORQUE (M4) | 53 |
| | - | 1 | 1 | 1-5018030-0 | NUT, HEX, REG, RoHS, M3.5 | 52 |
| | - | 1 | - | 2063961-1 | FEED FINGER | 51 |
| 3 | - | 1 | 1 | 1752354-1 | STANDOFF, HOLD-DOWN | 50 |
| | - | 1 | 2 | 18023-9 | SCR, SKT HD CAP M4 X 6.0 | 49 |
| | - | - | 1 | 2119652-1 | FEED CAM, PRE FEED | 48 |
| | - | 1 | 1 | 1803602-1 | SCR, BHSC, RoHS (M8 X 25) | 41 |
| | - | 8 | 8 | 1-18028-2 | WASHER, FLAT, REG M4 | 33 |
| | - | 2 | 2 | 2168083-9 | SCR, SKT HD CAP, RoHS, M4 X 20 | 31 |
| | - | 2 | 2 | 2168083-2 | SCR, SKT HD CAP, RoHS, M4 X 8.0 | 29 |
| | - | 1 | 1 | 240639-1 | STRIPPER (MACHINING) | 27 |
| | - | 2 | 2 | 1-2168083-5 | SCR, SKT HD CAP, RoHS, M4 X 30 | 25 |
| | - | 1 | 1 | 1752371-5 | PLATE, STRIP GUIDE | 24 |
| | - | 2 | 2 | 2-22281-3 | SPRING, COMPRESSION | 22 |
| | - | 1 | 1 | 1803292-1 | DRAG | 20 |
| | - | 1 | 1 | 1-1901696-5 | STRIP GUIDE, REAR | 19 |
| | - | 1 | 1 | 1-1901695-5 | STRIP GUIDE, FRONT | 18 |
| | - | 1 | 1 | 8-240641-6 | SPACER | 16 |
| | - | 1 | 1 | 1752360-1 | SPACER, HOLD-DOWN | 13 |
| 1 | - | 1 | 1 | 240833-7 | PLATE, REAR SHEAR | 11 |
| | - | - | - | - | - | 10 |
| 1 | - | 1 | 1 | 1-690496-5 | PLATE, FRONT SHEAR | 9 |
| 1 | 1 | 1 | 1 | 1-1333220-7 | ANVIL, COMBINATION, .120 | 8 |
| 1 | - | 1 | 1 | 690474-6 | BLADE, SLUG | 7 |
| 1 | - | 1 | 1 | 240641-1 | SPACER | 5 |
| | - | 1 | 1 | 238011-2 | BLOCK, CRIMPER SPACER | 4 |
| 1 | 1 | 1 | 1 | 2119582-3 | CRIMPER, INSULATION F PREMIUM | 3 |
| | - | 1 | 1 | 455888-4 | SPACER, CRIMPER | 2 |
| 1 | 1 | 1 | 1 | 1-456409-5 | CRIMPER, WIRE .120 "F" PREMIUM | 1 |
| | - | 77 | - | 22-21 | PART NO | ITEM NO |

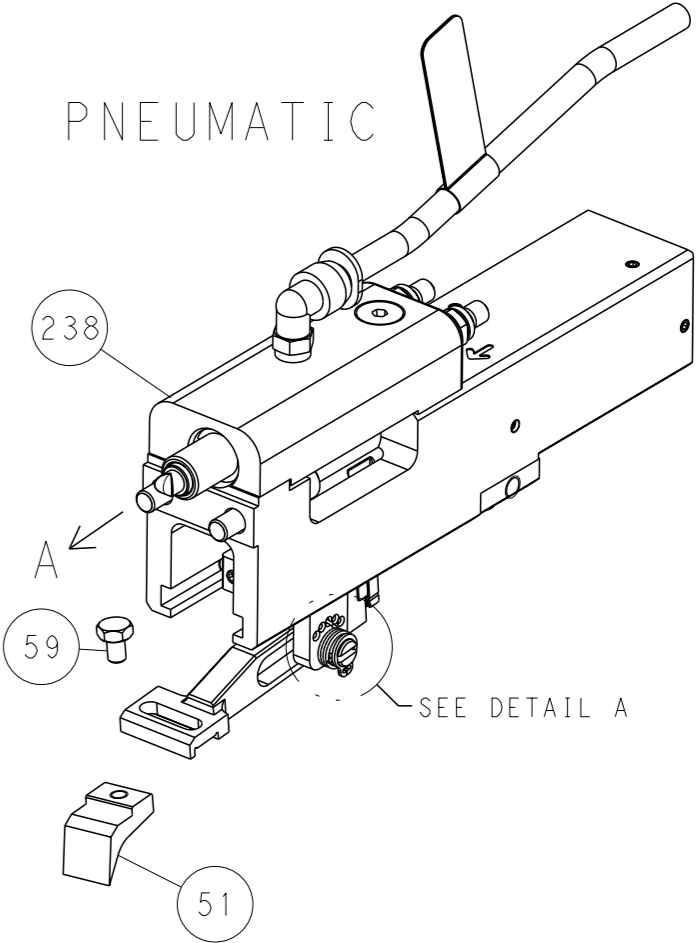
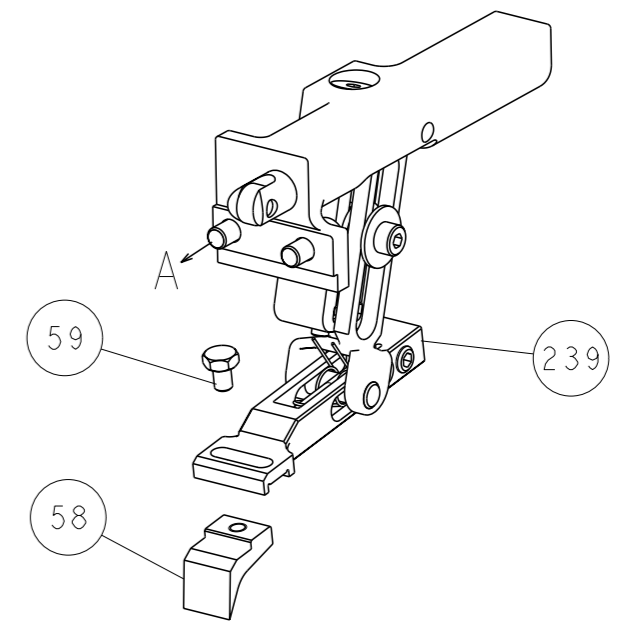
| | | | | | | | |
|--------------|--|--|--|------------------------|--|---|--|
| DIMENSIONS: | | TOLERANCES UNLESS OTHERWISE SPECIFIED: | | OWN: C. CHEN 28FEB2012 | | TE Connectivity | |
| mm | | 0 PLC ±.5 | | CHK: S. XI 28FEB2012 | | Harrisburg, PA 17105-3608 | |
| 1 PLC ±0.5 | | 2 PLC ±0.13 | | APV: J. CRUZ 28FEB2012 | | NAME: Ocean End Feed Applicator | |
| 3 PLC ±0.013 | | 4 PLC ±0.001 | | PRODUCT SPEC | | SIZE: CAGE CODE: DRAWING NO: RESTRICTED TO | |
| MATERIAL: | | FINISH: | | APPLICATION SPEC | | SCALE: 1:1 SHEET 3 OF 4 REV C | |
| WEIGHT: | | CUSTOMER ACCESSIBLE PRODUCTION DRAWING | | 00779 C=2150187 | | SHEETS 1 & 2 ARE NOT REQUIRED FOR PACIFIC VERSION | |

| LOC | DIST | REVISIONS | | | |
|-----|------|-----------|-------------|-----|------|
| A | 66 | REV | DATE | OWN | APVD |
| | | - | SEE SHEET 1 | - | - |

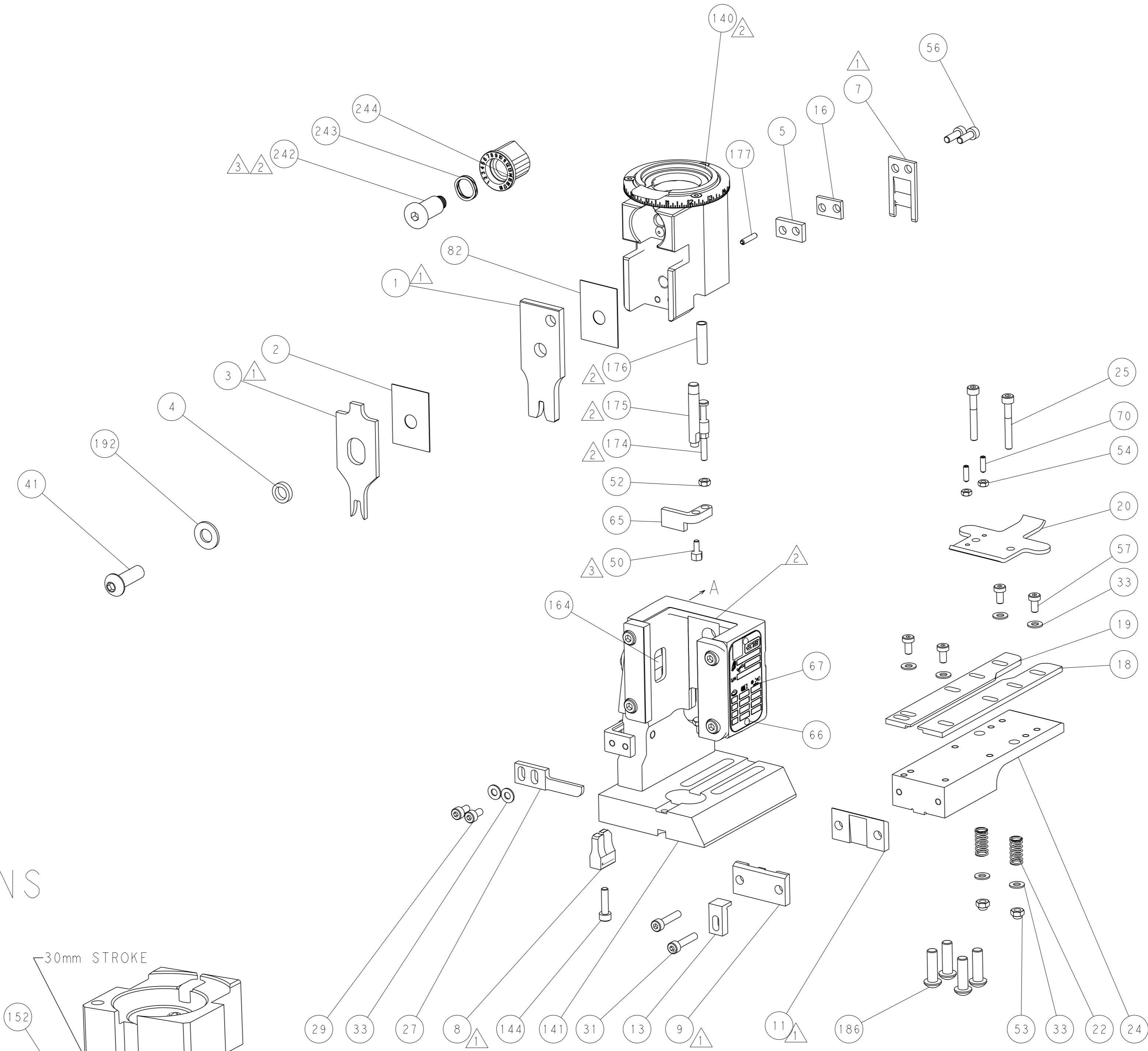
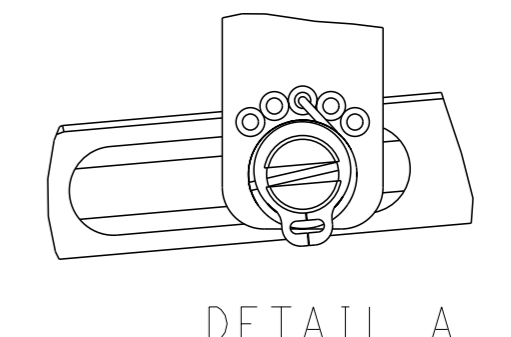


RAM AND HOLDDOWN SET-UP

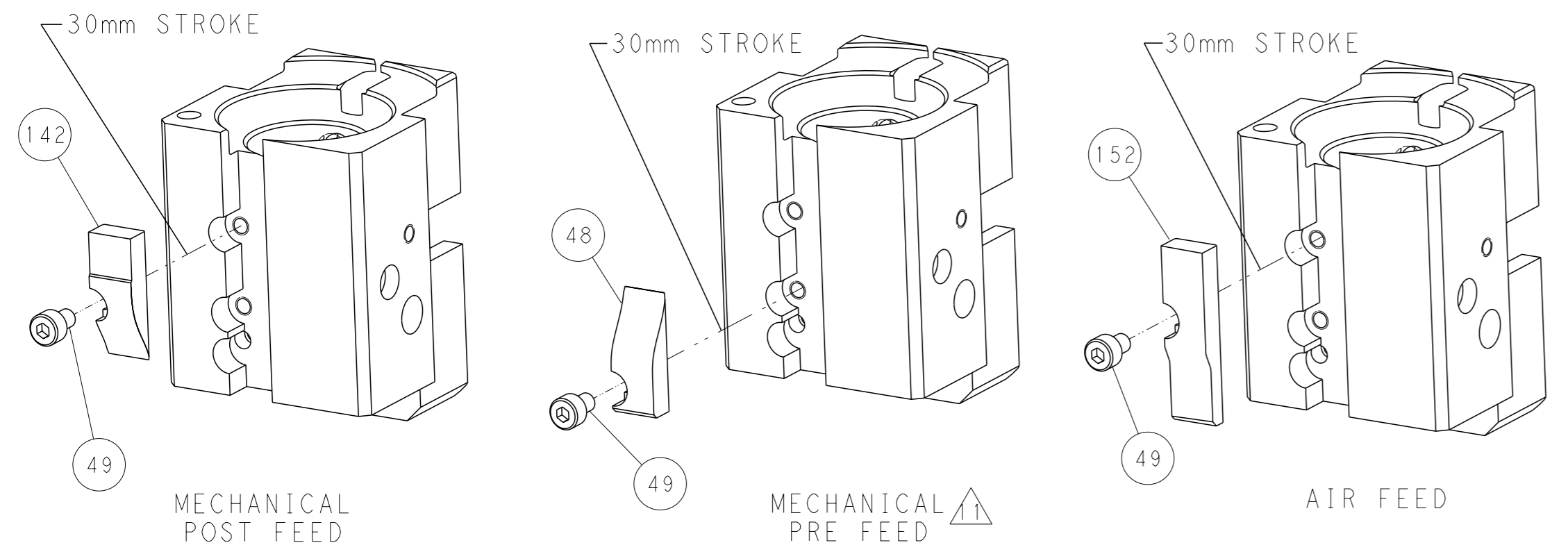
FEED TYPE
MECHANICAL



FEED SPRING
SETTING POSITION



CAM POSITIONS



PACIFIC VERSION
 Shown on sheets 3 of 4 & 4 of 4
 (Atlantic version shown on sheets 1 of 4 & 2 of 4)

| | | | | | | | | | |
|-----------------------|--|---|--|--|--|--|--|---|--|
| DIMENSIONS: mm | | TOLERANCES UNLESS OTHERWISE SPECIFIED: 0 PLC ±.5 1 PLC ±0.13 2 PLC ±0.13 3 PLC ±0.013 4 PLC ±0.001 ANGLES FINISH ±. | | OWN C. CHEN 28FEB2012 CHK S. XI APVD J. CRUZ 28FEB2012 PRODUCT SPEC APPLICATION SPEC WEIGHT CUSTOMER ACCESSIBLE PRODUCTION DRAWING | | NAME Ocean End Feed Applicator SIZE CAGE CODE DRAWING NO A1 00779 C=2150187 SCALE 1:1 SHEET 4 OF 4 REV C | | RESTRICTED TO STE TE Connectivity Harrisburg, PA 17105-3608 | |
|-----------------------|--|---|--|--|--|--|--|---|--|