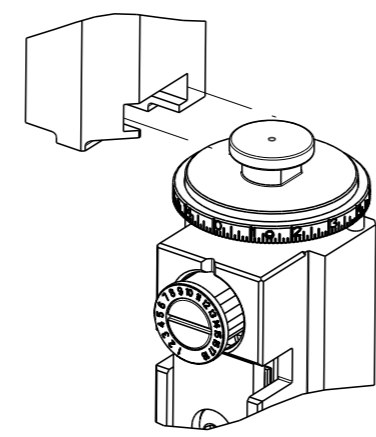


THIS DRAWING IS UNPUBLISHED.	RELEASED FOR PUBLICATION	20	
COPYRIGHT 20 BY TYCO ELECTRONICS CORPORATION. ALL RIGHTS RESERVED.			
PART NUMBER	REVISION	DESCRIPTION	FEED TYPE
2151794-2	L	FINE CRIMP HEIGHT ADJUST	PNEUMATIC
7-2151794-2	L	PNEUMATIC AND CRIMP TOOLING KIT	PNEUMATIC
7-2151794-7	C	CRIMP TOOLING KIT	-

ATLANTIC VERSION TERMINATOR INTERFACE ADAPTER



APPLICATOR DATA		
CRIMP	SIZE	TYPE
WIRE	5.08 mm [ .200 ]	F
INSUL	10.92 mm [ .430 ]	O
APPLICATOR INSTRUCTIONS 408-35042		

TERMINAL DATA: TE TERMINAL		TE CRIMP SPECIFICATION	
TERMINAL NAME: AMP MCP 9.5 FLAT TYPE RECEPTACLE, SWS			
WIRE STRIP LENGTH		INSULATION DIAMETER RANGE	
9.70-10.30 mm [ .382-.406 IN ]		∅ - -	
TERMINAL APPLICATION SPECIFICATION	114-18269	-	-

TERMINAL DATA: TE TERMINAL		TE CRIMP SPECIFICATION	
TERMINAL NAME: AMP MCP 9.5 FLAT TYPE RECEPTACLE, SWS			
WIRE STRIP LENGTH		INSULATION DIAMETER RANGE	
10.60-11.40mm [ .457-.449 IN ]		∅ - -	
TERMINAL APPLICATION SPECIFICATION	114-18075	-	-

TE TERMINAL	TE TERMINAL	TE SEAL	TE SEAL	CABLE ∅
1-967590-1	1-967590-2		1355437-1	∅ 4.6-5.2
			1355437-2	∅ 5.8-6.6

TE TERMINAL	TE TERMINAL	TE SEAL	TE SEAL	CABLE ∅
962938-1	2-962938-1		1355437-1	∅ 4.6-5.2
			1355437-2	∅ 5.8-6.6

WIRE SIZE	CRIMP HEIGHT mm [INCH]	CRIMP HEIGHT REFERENCE SETTING
10.00mm2	3.84 +/- 0.05 [ .151 +/- .002 ]	2.7
6.00mm2	3.22 +/- 0.05 [ .127 +/- .002 ]	9.6

WIRE SIZE	CRIMP HEIGHT mm [INCH]	CRIMP HEIGHT REFERENCE SETTING
10.00mm2	3.82 +/- 0.10 [ .150 +/- .004 ]	2.9
6.00mm2	3.20 +/- 0.05 [ .126 +/- .002 ]	9.8

- 1 RECOMMENDED SPARE PARTS
- 2 REFER TO SUPPLIED INSTRUCTION SHEET FOR CLEANING, LUBRICATION AND STORAGE OF APPLICATOR.
- 3 APPLY PART NUMBER 2-23419-6 LOCTITE TO THREADS OF ITEM 242.
- 4 CRIMP HEIGHT REFERENCE SETTING WAS THE SETTING USED WHEN THE APPLICATOR WAS QUALIFIED AT THE FACTORY. ADJUSTMENT MAY BE NECESSARY WHEN RUNNING APPLICATOR IN THE FIELD.
- 5 TERMINAL LUBRICANT IS RECOMMENDED.
- 6. UNLESS SPECIFIED OTHERWISE TORQUE VALUES SHALL BE USED PER DOCUMENT, 101-35000.
- 7 APPLY TORO-SEAL IN ALLEN SOCKET TO FILL HOLE AFTER FLAT HD HAS BEEN ADJUSTED TO CORRECT HEIGHT AT QUALIFICATION.
- 8 CUT TO LENGTH AT ASSEMBLY.
- 9 RELOCATE ITEM 19 TO BACK OF APPLICATOR .
- 10 TERMINAL PITCH NOT COMPATIBLE WITH MECHANICAL FEED.
- 11 FEED PAWL WILL REST ON STRIP GUIDE.

**\*WARNING**  
ON INSTALLATION, SET WIRE DISC TO CRIMP HEIGHT REFERENCE SETTING FOR LARGEST WIRE SIZE. CRIMP HEIGHT REFERENCE SETTINGS GREATER THAN THE VALUE SHOWN MAY CAUSE DAMAGE TO THE CRIMP TOOLING. REFER TO THE INSTRUCTION SHEET FOR PROPER SETUP AND ADJUSTMENTS.

LOC	DIST	REVISIONS					
A	66	P	LY#	DESCRIPTION	DATE	OWN	APVD
		H		ECR-19-001861	04FEB2019	LG	CT
		J		ECR-19-005860	11APR2019	FJ	TE
		K		ECR-20-002369	18FEB2020	TB	GB
		L		ECR-20-011031	04AUG2020	JAH	GB

-	1	1	5018030-1	NUT, HEX, REG, RoHS, M3	291
-	1	1	1-18028-2	WASHER, FLAT, REG M4	271
-	1	1	2119641-1	FEED CAM, AIR FEED	248
-	1	1	2119082-7	CAM, SNAIL, INSULATION ADJUSTMENT	244
-	1	1	2079764-1	WASHER, WAVE SPRING, CREST-TO-CREST	243
-	1	1	2119083-1	RETAINER, INSULATION DIAL	242
-	1	1	2844940-6	AIR FEED MODULE	238
-	1	1	455888-9	SPACER, CRIMPER	221
-	REF	REF	994970-2	COUNTER, MAGNETIC	164
-	1	1	1-22281-8	SPRING, COMPRESSION	121
-	1	1	2119955-1	ASSY, LUBRICATOR, SIDE FEED	113
-	1	1	2844908-1	SCREW, LOCKING	99
-	1	1	2844907-1	POST, LOCKING	98
-	1	1	1-690438-0	FRONT STRIP GUIDE	96
-	2	2	2168083-1	SCR, SKT HD CAP, RoHS, M3 X 8.0	95
-	1	1	2168083-6	SCR, SKT HD CAP, RoHS, M5 X 65	93
-	1	1	455888-9	SPACER, CRIMPER	82
-	2	2	2079383-4	SCR, BHSC, RoHS (M4 X 8)	79
-	1	1	1803096-1	EXTENSION PLATE	78
-	2	2	2168083-1	SCR, SKT HD CAP, RoHS, M3 X 8.0	77
-	1	1	1633782-7	FENCE	76
-	1	1	1803607-3	DOCUMENTATION PACKAGE	71
-	1	1	1-2119791-2	DEPRESSOR, WIRE	70
-	1	1	2119943-1	WASHER, SPACER	69
-	1	1	2119740-1	TAG, IDENTIFICATION	67
-	2	2	2168078-1	SCREW, DRIVE, RH, RoHS, 2 x .188	66
-	2	2	2-18032-5	SCR, SET, FLT PNT, M5 X 20.0	61
-	1	1	2168083-2	SCR, SKT HD CAP, RoHS, M4 X 8.0	60
-	1	1	5-18022-5	SCR, HEX HD CAP, M4 X 6.0	59
-	1	1	1-2168083-3	SCR, SKT HD CAP, RoHS, M3 X 16	57
-	1	1	1-1338683-1	FEED PAWL	56
-	4	4	2168083-3	SCR, SKT HD CAP, RoHS, M4 X 12.0	54
-	2	2	2168083-8	SCR, SKT HD CAP, RoHS, M4 X 16	53
-	1	1	5018030-1	NUT, HEX, REG, RoHS, M3	52
-	1	1	1-811242-0	BUMPER, HOLD DOWN	51
-	1	1	690753-2	SPACER, TONKER	50
-	1	1	18023-9	SCR, SKT HD CAP M4 X 6.0	49
-	1	1	2-1803583-6	APPLICATOR BASIC ASSEMBLY, SF	46
-	1	1	1803515-2	RAM ASSEMBLY, SF ATLANTIC	44
-	1	1	1803602-2	SCR, BHSC, RoHS (M8 X 40)	41
-	1	1	1752356-7	SUPPORT, TERMINAL	34
-	2	2	1-2079383-3	SCR, BHSC, RoHS (M4 X 25)	33
-	2	2	3-2844962-7	SPACER, CYLINDRICAL, STRIP GUIDE	30
-	1	1	2844938-9	PLATE, STRIP GUIDE	29
-	1	1	3-455888-2	SPACER, CRIMPER	28
-	2	2	22283-1	SPRING, COMPRESSION	27
-	1	1	356835-1	LEVER, DRAG RELEASE	26
-	1	1	240792-1	DRAG, TERMINAL	25
-	1	1	1320928-6	STRIP GUIDE	24
-	1	1	980371-4	SCR, SKT HD SHLDR 5.0 DIA X 6.0	23
-	1	1	2168083-2	SCR, SKT HD CAP, RoHS, M4 X 8.0	21
-	2	2	1-18028-2	WASHER, FLAT, REG M4	20
-	1	1	1803013-1	STRIPPER, SIDE FEED	19
-	1	1	4-22280-7	SPRING, COMPRESSION	12
-	1	1	1-356885-4	STOP, SHEAR	11
-	1	1	2-2119805-3	SHEAR HOLDER, FRONT	10
-	1	1	1-318059-3	FLOATING SHEAR, FRONT	9
-	1	2	1-1633930-3	ANVIL, COMBINATION	8
-	1	1	2-240641-9	SPACER	7
-	-	-	-	-	6
-	1	1	1803080-3	DEPRESSOR, SHEAR	5
-	1	1	2-238011-9	BLOCK, CRIMPER SPACER	4
-	1	2	1803453-2	CRIMPER, INSULATION O	3
-	1	1	2-455888-0	SPACER, CRIMPER	2
-	1	2	5-568176-0	CRIMPER, WIRE	1

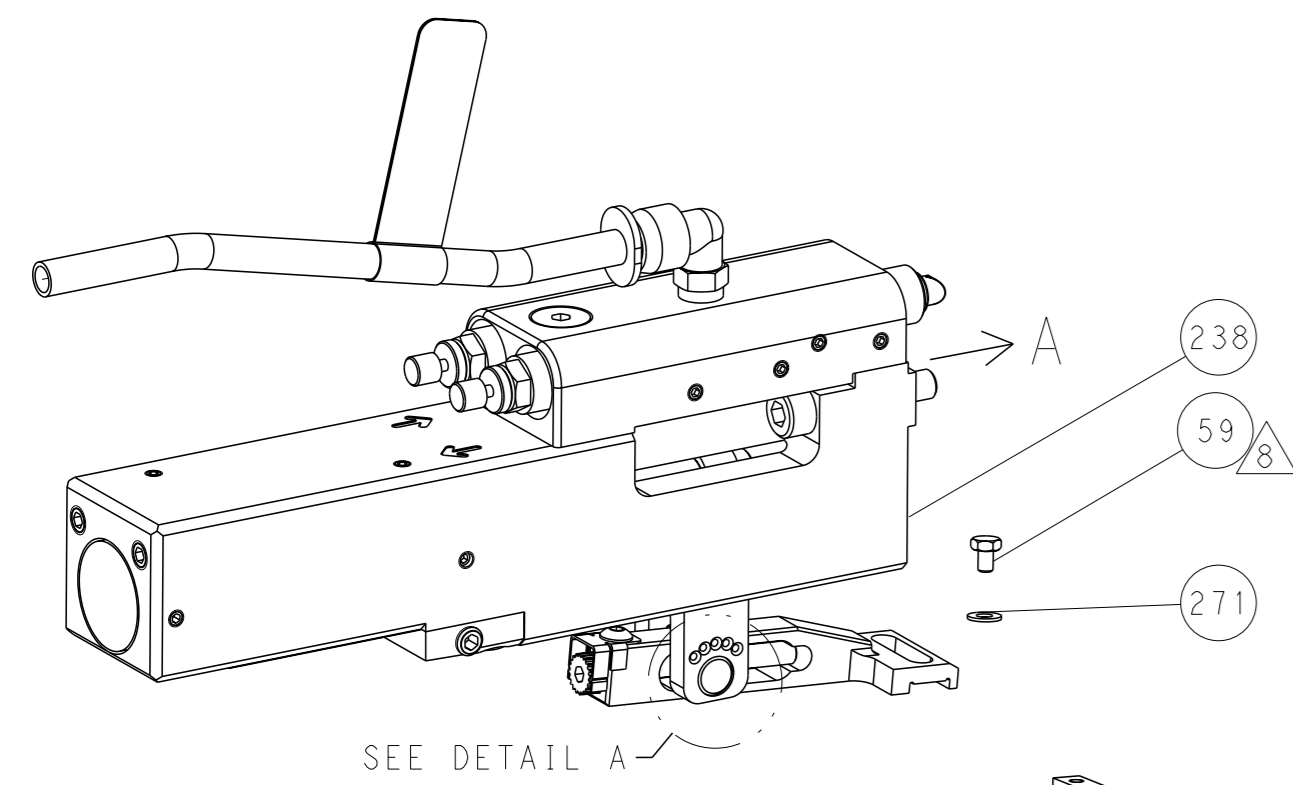
ATLANTIC VERSION  
Shown on sheets 1 of 4 & 2 of 4  
(Pacific version shown on sheets 3 of 4 & 4 of 4)

DIMENSIONS:		TOLERANCES UNLESS OTHERWISE SPECIFIED:		OWN	26NOV2012	TE Connectivity	
mm	0 PLC ±	1 PLC ±	2 PLC ±	H. HUANG	26NOV2012	Harrisburg, PA 17105-3608	
	3 PLC ±	4 PLC ±	ANGLES ±	S. XI	26NOV2012	NAME	
				APVD		Ocean Side Feed Applicator	
MATERIAL				PRODUCT SPEC		SIZE	CAGE CODE
				APPLICATION SPEC		00779	∅=2151794
				WEIGHT		SCALE	1:2
						SHEET	1 of 4
						REV	L

REVISONS		DATE	OWN	APVD
P	LYH			
- SEE SHEET 1				

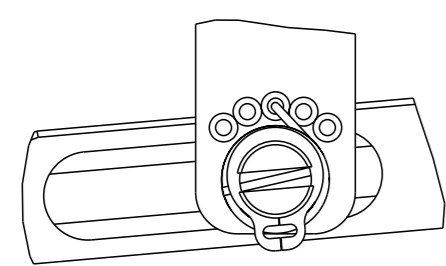
# FEED TYPE

## PNEUMATIC



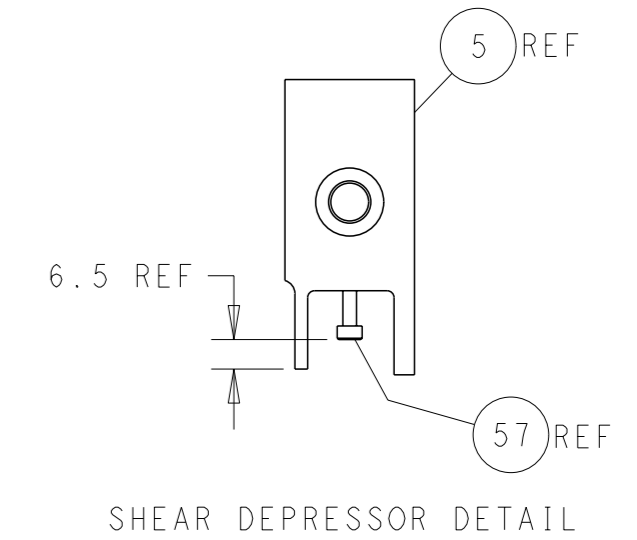
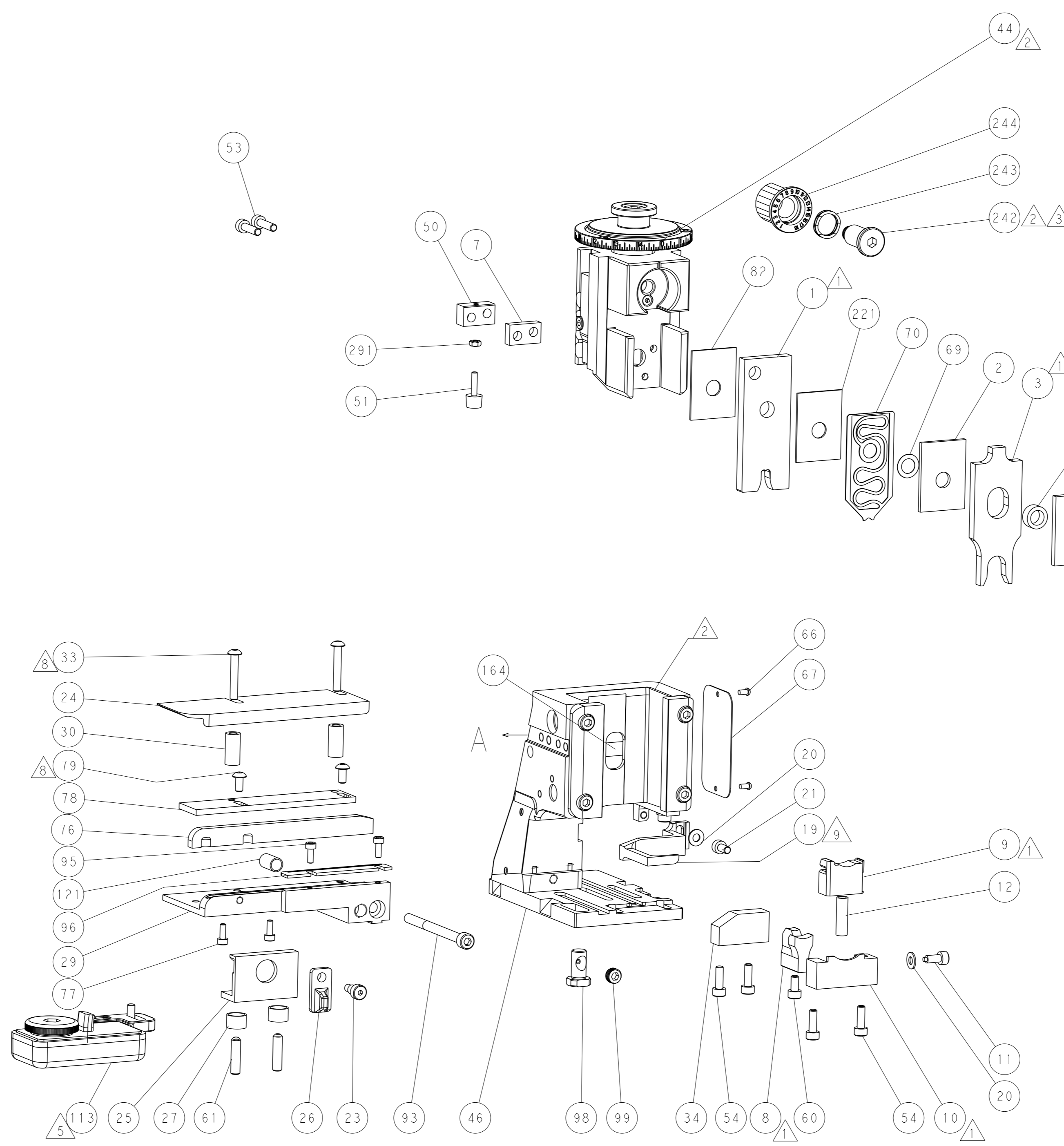
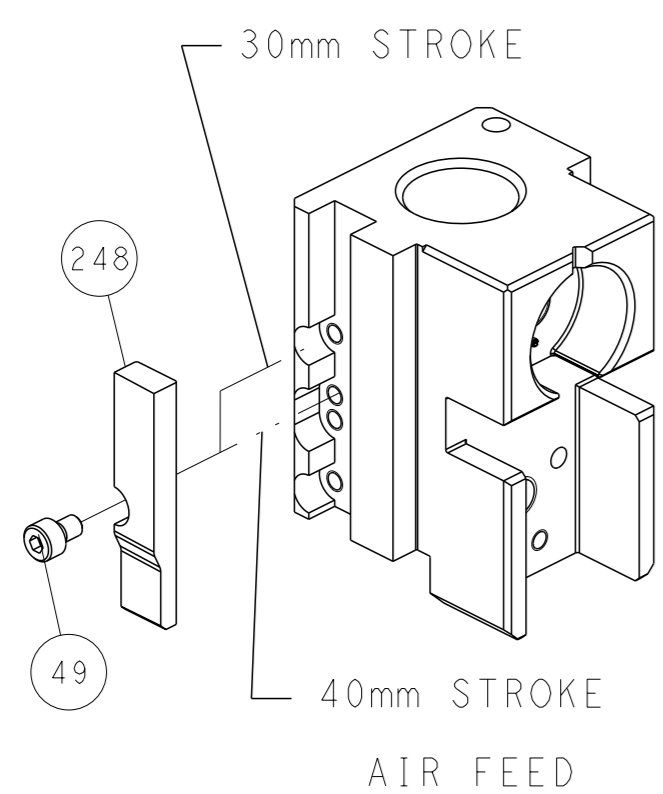
SEE DETAIL A

## FEED SPRING SETTING POSITION (SHOWN FROM REAR SIDE)

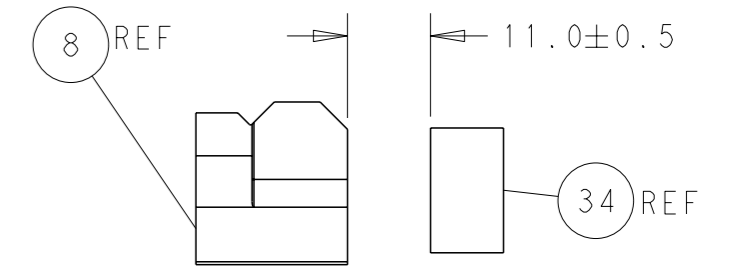


DETAIL A

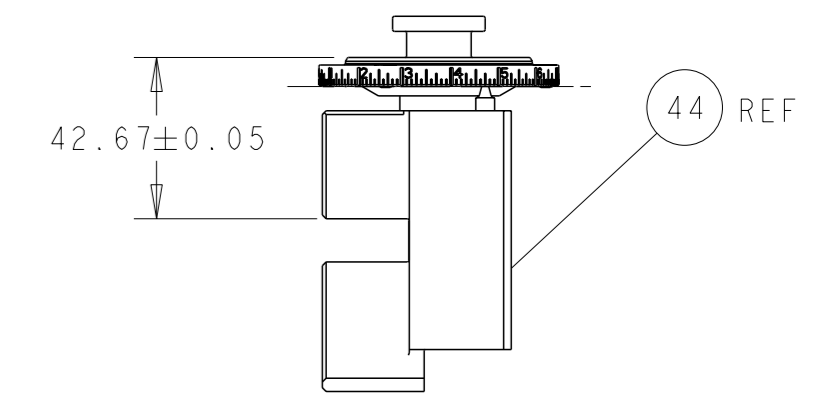
## CAM POSITION



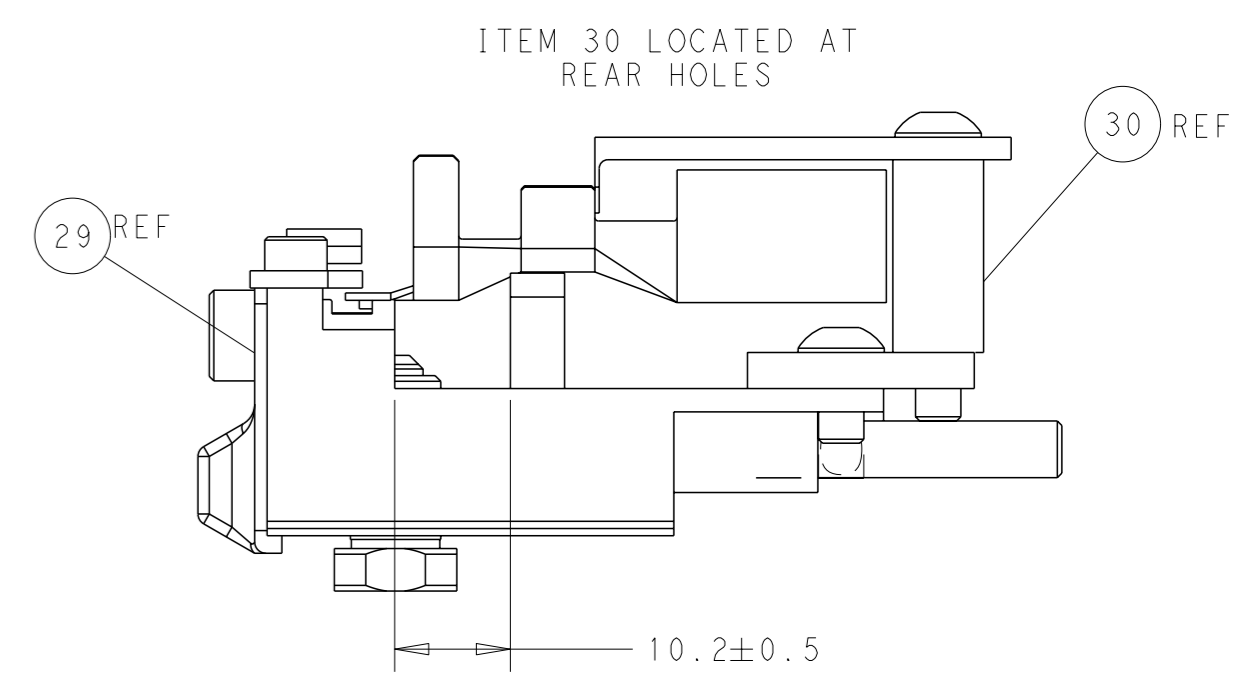
SHEAR DEPRESSOR DETAIL



TERMINAL SUPPORT LOCATION



RAM SET-UP



FEED TRACK POSITION GUIDE BY WIRE BARREL

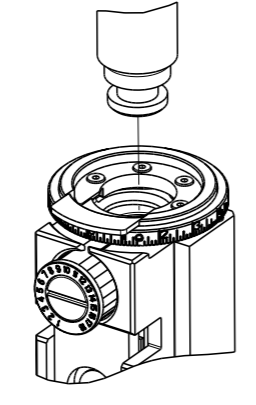
**ATLANTIC VERSION**  
 Shown on sheets 1 of 4 & 2 of 4  
 (Pacific version shown on sheets 3 of 4 & 4 of 4)

<small>THIS DRAWING IS A CONTROLLED DOCUMENT FOR TYCO ELECTRONICS CORPORATION. IT IS SUBJECT TO CHANGE AND THE CONTROLLER'S ENGINEERING DEPARTMENT SHOULD BE CONTACTED FOR THE LATEST REVISION.</small>		DWN: H. HUANG CHK: S. XI APVD: S. XI PRODUCT SPEC: - APPLICATION SPEC: - WEIGHT: - SCALE: 1:2	26NOV2012 26NOV2012 26NOV2012 NAME: Ocean Side Feed Applicator SIZE: A1 CAGE CODE: 00779 DRAWING NO: 2151794 SHEET: 2 of 4 REV: L	TE Connectivity Harrisburg, PA 17105-3608
---	--	---	---	--

THIS DRAWING IS UNPUBLISHED. RELEASED FOR PUBLICATION  
 BY TYCO ELECTRONICS CORPORATION. ALL RIGHTS RESERVED.

PART NUMBER	REVISION	DESCRIPTION	FEED TYPE
2-2151794-2	L	FINE CRIMP HEIGHT ADJUST	PNEUMATIC
7-2151794-7	C	CRIMP TOOLING KIT	-

PACIFIC VERSION TERMINATOR  
 INTERFACE ADAPTER



APPLICATOR DATA		
CRIMP	SIZE	TYPE
WIRE	5.08 mm [.200]	F
INSUL	10.92 mm [.430]	O
APPLICATOR INSTRUCTIONS 408-35042		

TERMINAL DATA: TE TERMINAL		TE CRIMP SPECIFICATION	
TERMINAL NAME: AMP MCP 9.5 FLAT TYPE RECEPTACLE, SWS			
WIRE STRIP LENGTH	INSULATION DIAMETER RANGE		
9.70-10.30 mm [.382-.406 IN]	∅ -		
TERMINAL APPLICATION SPECIFICATION	114-18269	-	-
TERMINALS APPLIED $\triangle 5 \triangle 0$			
TE TERMINAL	TE TERMINAL	TE SEAL	CABLE ∅
1-967590-1	1-967590-2		∅4.6-5.2
		1355437-2	∅5.8-6.6

TERMINAL DATA: TE TERMINAL		TE CRIMP SPECIFICATION	
TERMINAL NAME: AMP MCP 9.5 FLAT TYPE RECEPTACLE, SWS			
WIRE STRIP LENGTH	INSULATION DIAMETER RANGE		
10.60-11.40mm [.457-.449 IN]	∅ -		
TERMINAL APPLICATION SPECIFICATION	114-18075	-	-
TERMINALS APPLIED $\triangle 5 \triangle 0$			
TE TERMINAL	TE TERMINAL	TE SEAL	CABLE ∅
962938-1	2-962938-1		∅4.6-5.2
		1355437-2	∅5.8-6.6

WIRE SIZE	CRIMP HEIGHT mm [INCH]	CRIMP HEIGHT REFERENCE SETTING
10.00mm2	3.84+/-0.05 [.151+/- .002]	2.7
6.00mm2	3.22+/-0.05 [.127+/- .002]	9.6

WIRE SIZE	CRIMP HEIGHT mm [INCH]	CRIMP HEIGHT REFERENCE SETTING
10.00mm2	3.82+/-0.10 [.150+/- .004]	2.9
6.00mm2	3.20+/-0.05 [.126+/- .002]	9.8

- $\triangle 1$  RECOMMENDED SPARE PARTS
- $\triangle 2$  REFER TO SUPPLIED INSTRUCTION SHEET FOR CLEANING, LUBRICATION AND STORAGE OF APPLICATOR.
- $\triangle 3$  APPLY PART NUMBER 2-23419-6 LOCTITE TO THREADS OF ITEM 242.
- $\triangle 4$  CRIMP HEIGHT REFERENCE SETTING WAS THE SETTING USED WHEN THE APPLICATOR WAS QUALIFIED AT THE FACTORY. ADJUSTMENT MAY BE NECESSARY WHEN RUNNING APPLICATOR IN THE FIELD.
- $\triangle 5$  TERMINAL LUBRICANT IS RECOMMENDED.
- 6. UNLESS SPECIFIED OTHERWISE TORQUE VALUES SHALL BE USED PER DOCUMENT, 101-35000.
- $\triangle 7$  APPLY TORO-SEAL IN ALLEN SOCKET TO FILL HOLE AFTER FLAT HD HAS BEEN ADJUSTED TO CORRECT HEIGHT AT QUALIFICATION.
- $\triangle 8$  CUT TO LENGTH AT ASSEMBLY.
- $\triangle 9$  RELOCATE ITEM 19 TO BACK OF APPLICATOR.
- $\triangle 10$  TERMINAL PITCH NOT COMPATIBLE WITH MECHANICAL FEED.
- $\triangle 11$  FEED PAWL WILL REST ON STRIP GUIDE.

**\*WARNING**  
 ON INSTALLATION, SET WIRE DISC TO CRIMP HEIGHT REFERENCE SETTING FOR LARGEST WIRE SIZE. CRIMP HEIGHT REFERENCE SETTINGS GREATER THAN THE VALUE SHOWN MAY CAUSE DAMAGE TO THE CRIMP TOOLING. REFER TO THE INSTRUCTION SHEET FOR PROPER SETUP AND ADJUSTMENTS.

LOC	DIST	REV	DESCRIPTION	DATE	OWN	APPV
A	66	-	SEE SHEET 1	-	-	-

QTY	DESCRIPTION	ITEM NO
- 1	5018030-1 NUT, HEX, REG, RoHS, M3	291
- 1	2119082-7 CAM, SNAIL, INSULATION ADJUSTMENT	244
- 1	2079764-1 WASHER, WAVE SPRING, CREST-TO-CREST	243
$\triangle 3$ - 1	2119083-1 RETAINER, INSULATION DIAL	242
- 1	2844940-6 AIR FEED MODULE	238
- 1	455888-9 SPACER, CRIMPER	221
- REF	994970-2 COUNTER, MAGNETIC	164
- 1	2119641-2 FEED CAM, AIR FEED	151
- 1	2168083-8 SCR, SKT HD CAP, RoHS, M4 X 16	144
- 4	2168083-9 SCR, SKT HD CAP, RoHS, M4 X 20	143
- 1	2-1803583-7 APPLICATOR BASIC ASSEMBLY, SF	141
- 1	1803516-2 RAM ASSEMBLY, SF PACIFIC	140
- 1	1-22281-8 SPRING, COMPRESSION	121
$\triangle 5$ - 1	2119955-1 ASSY, LUBRICATOR, SIDE FEED	113
- 1	2844908-1 SCREW, LOCKING	99
- 1	2844907-1 POST, LOCKING	98
- 1	1-690438-0 FRONT STRIP GUIDE	96
- 2	2168083-1 SCR, SKT HD CAP, RoHS, M3 X 8.0	95
- 1	2168083-6 SCR, SKT HD CAP, RoHS, M5 X 65	93
- 1	455888-9 SPACER, CRIMPER	82
$\triangle 8$ - 2	2079383-4 SCR, BHSC, RoHS (M4 X 8)	79
- 1	1803096-1 EXTENSION PLATE	78
- 2	2168083-1 SCR, SKT HD CAP, RoHS, M3 X 8.0	77
- 1	1633782-7 FENCE	76
- 1	1803607-3 DOCUMENTATION PACKAGE	71
- 1	1-2119791-2 DEPRESSOR, WIRE	70
- 1	2119943-1 WASHER, SPACER	69
- 1	2119740-1 TAG, IDENTIFICATION	67
- 2	2168078-1 SCREW, DRIVE, RH, RoHS, 2 x .188	66
- 2	2-18032-5 SCR, SET, FLT PNT, M5 X 20.0	61
$\triangle 8$ - 1	5-18022-5 SCR, HEX HD CAP, M4 X 6.0	59
$\triangle 7$ - 1	1-2168083-3 SCR, SKT HD CAP, RoHS, M3 X 16	57
$\triangle 11$ - 1	1-1338683-1 FEED PAWL	56
- 2	2168083-8 SCR, SKT HD CAP, RoHS, M4 X 16	53
- 1	5018030-1 NUT, HEX, REG, RoHS, M3	52
- 1	1-811242-0 BUMPER, HOLD DOWN	51
- 1	690753-2 SPACER, TONKER	50
- 1	18023-9 SCR, SKT HD CAP M4 X 6.0	49
- 1	1803602-2 SCR, BHSC, RoHS (M8 X 40)	41
- 1	1752356-7 SUPPORT, TERMINAL	34
$\triangle 8$ - 2	1-2079383-3 SCR, BHSC, RoHS (M4 X 25)	33
- 2	3-2844962-7 SPACER, CYLINDRICAL, STRIP GUIDE	30
- 1	2844938-9 PLATE, STRIP GUIDE	29
- 1	3-455888-2 SPACER, CRIMPER	28
- 2	22283-1 SPRING, COMPRESSION	27
- 1	356835-1 LEVER, DRAG RELEASE	26
- 1	240792-1 DRAG, TERMINAL	25
- 1	1320928-6 STRIP GUIDE	24
- 1	980371-4 SCR, SKT HD SHLDR 5.0 DIA X 6.0	23
- 1	2168083-2 SCR, SKT HD CAP, RoHS, M4 X 8.0	21
- 2	1-18028-2 WASHER, FLAT, REG M4	20
$\triangle 9$ - 1	1803013-1 STRIPPER, SIDE FEED	19
- 1	4-22280-7 SPRING, COMPRESSION	12
- 1	1-356885-4 STOP, SHEAR	11
$\triangle 1$ - 1	2-2119805-3 SHEAR HOLDER, FRONT	10
$\triangle 1$ - 1	1-318059-3 FLOATING SHEAR, FRONT	9
$\triangle 1$ - 1	1-1633930-3 ANVIL, COMBINATION	8
- 1	2-240641-9 SPACER	7
-	-	6
- 1	1803080-3 DEPRESSOR, SHEAR	5
- 1	2-238011-9 BLOCK, CRIMPER SPACER	4
$\triangle 1$ - 1	1803453-2 CRIMPER, INSULATION O	3
- 1	2-455888-0 SPACER, CRIMPER	2
$\triangle 1$ - 1	5-568176-0 CRIMPER, WIRE	1
- 77	- 22 PART NO	

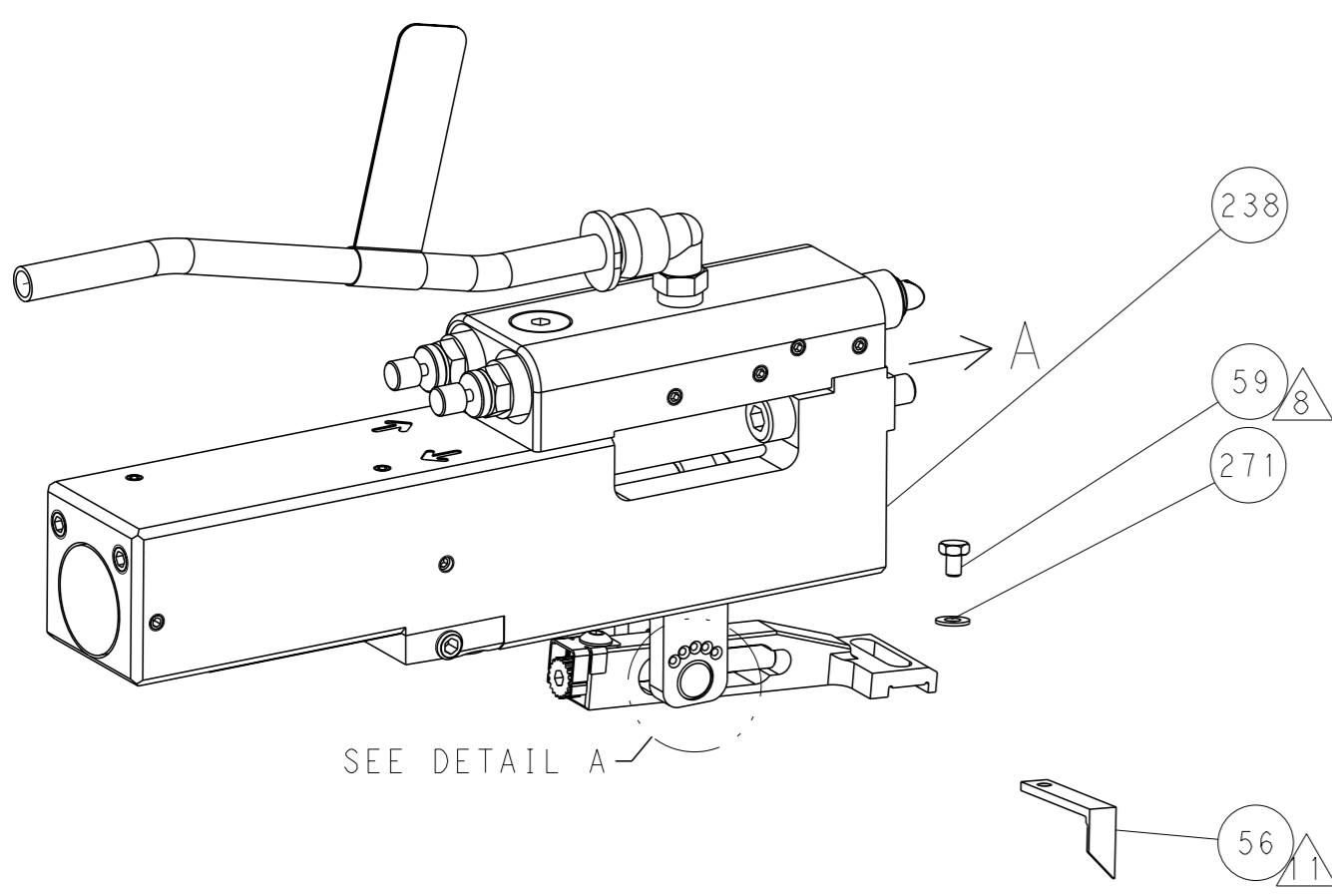
PACIFIC VERSION  
 Shown on sheets 3 of 4 & 4 of 4  
 (Atlantic version shown on sheets 1 of 4 & 2 of 4)

DIMENSIONS: mm 0 PLC ± 1 PLC ± 2 PLC ± 3 PLC ± 4 PLC ± ANGLES FINISH ±		TOLERANCES UNLESS OTHERWISE SPECIFIED: mm 0 PLC ± 1 PLC ± 2 PLC ± 3 PLC ± 4 PLC ± ANGLES FINISH ±		OWN: H. HUANG 26NOV2012 CHK: S. XI 26NOV2012 APPV: S. XI 26NOV2012 PRODUCT SPEC APPLICATION SPEC WEIGHT: - SCALE: 1:2 SHEET 3 OF 4 REV L		NAME: Ocean Side Feed Applicator SIZE: A1 CAGE CODE: 00779 DRAWING NO: 2151794 RESTRICTED TO: -	
--	--	--	--	--	--	---	--

LOC	DIST	REVISIONS			
A	66	REV	DATE	OWN	APVD
		-	SEE SHEET 1	-	-

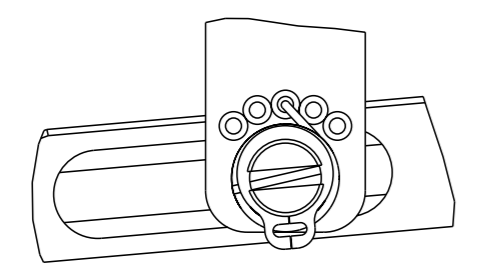
# FEED TYPE

## PNEUMATIC



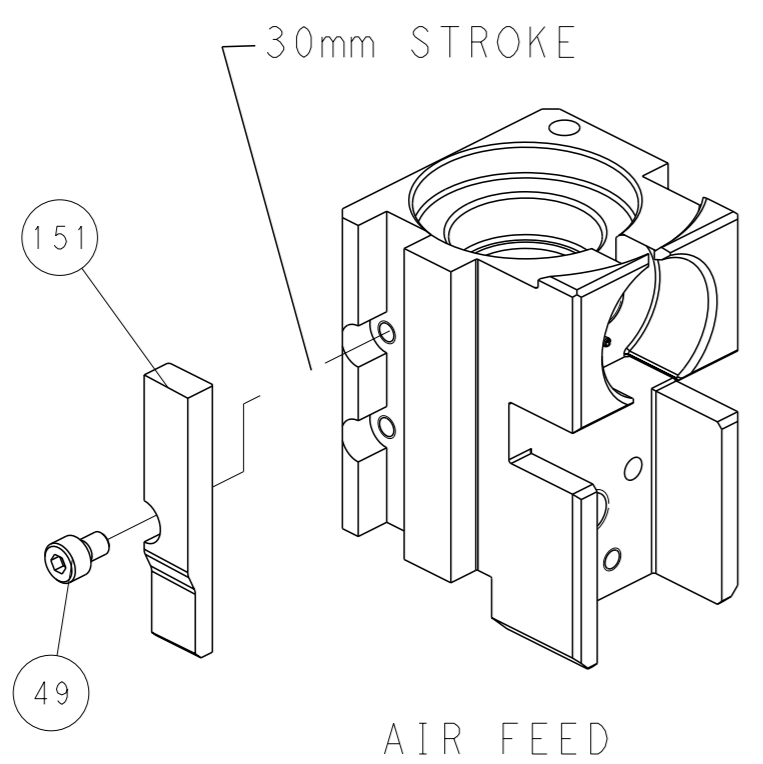
SEE DETAIL A

## FEED SPRING SETTING POSITION (SHOWN FROM REAR SIDE)

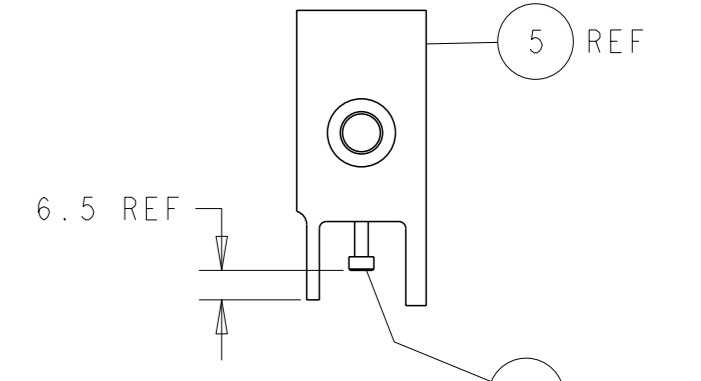
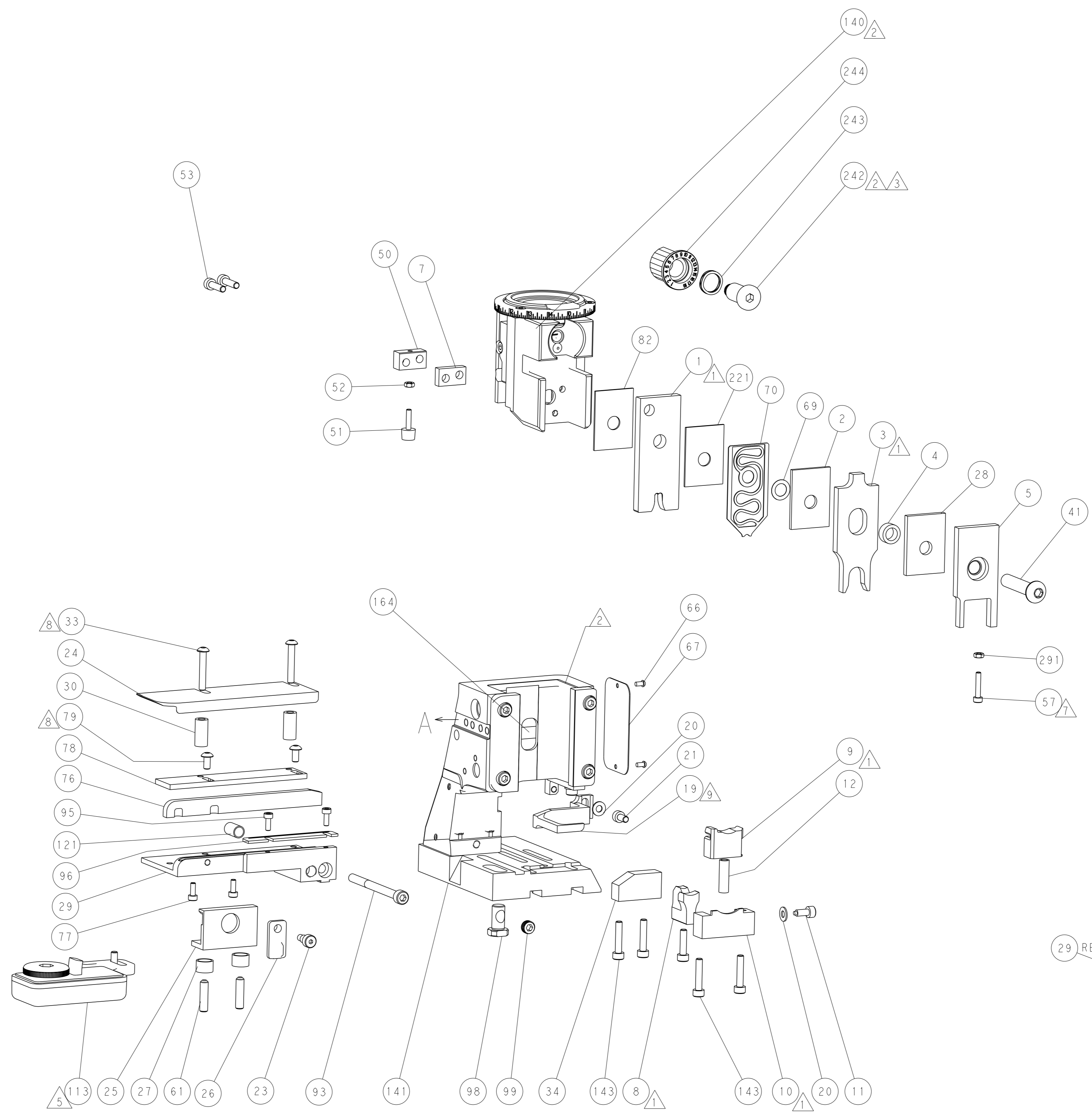


DETAIL A

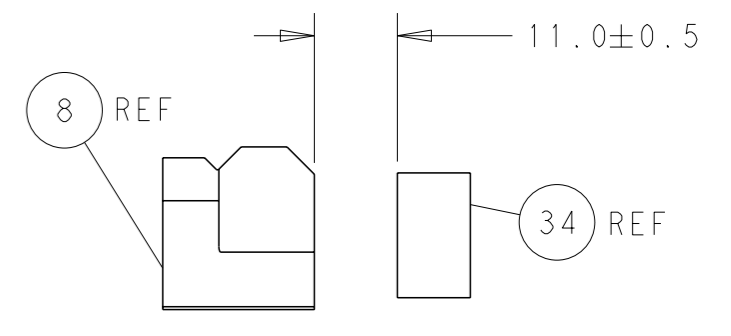
## CAM POSITION



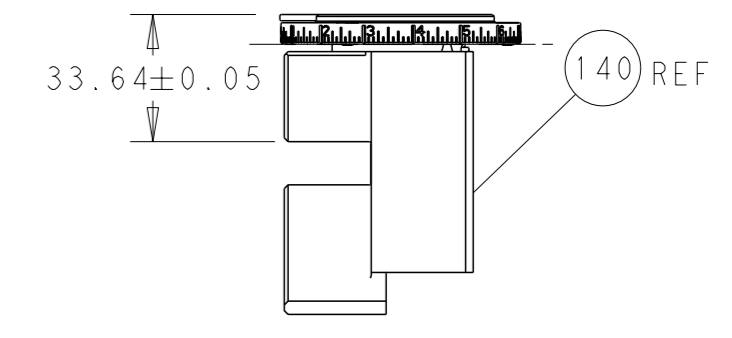
AIR FEED



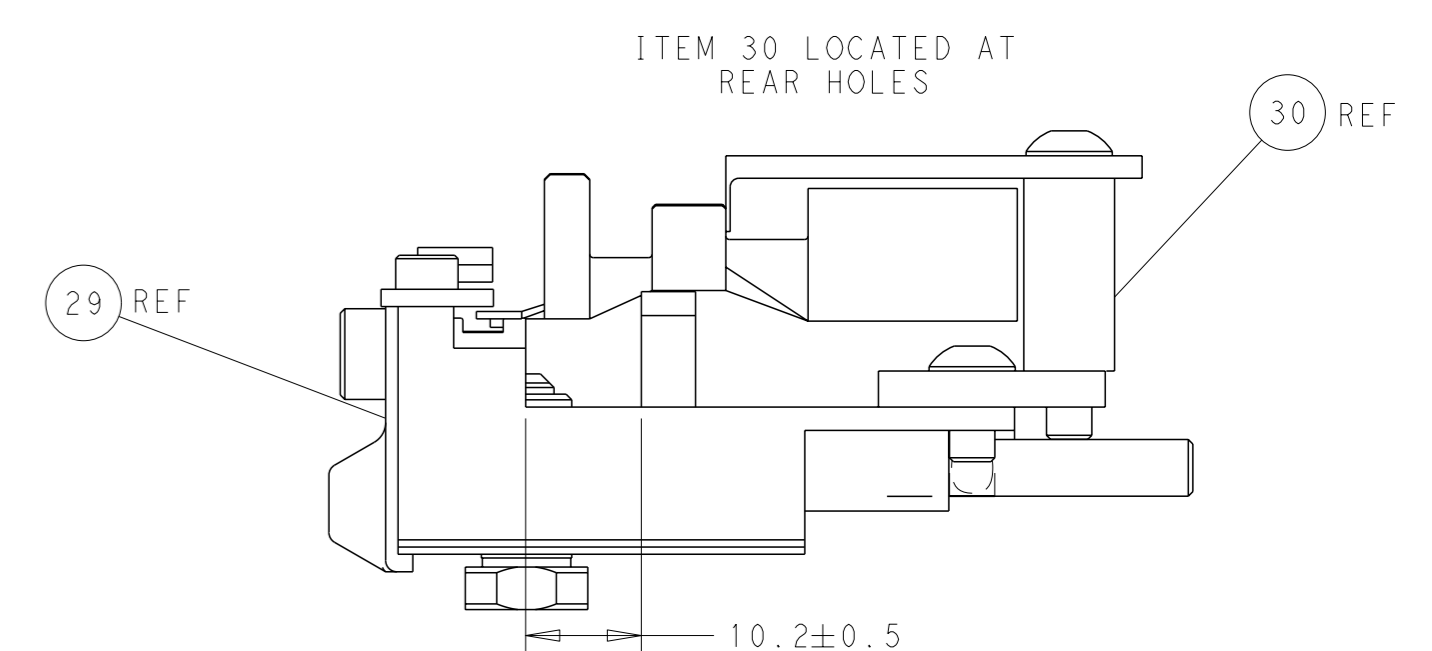
SHEAR DEPRESSOR DETAIL



TERMINAL SUPPORT LOCATION



RAM SET-UP



FEED TRACK POSITION GUIDE BY WIRE BARREL

**PACIFIC VERSION**  
 Shown on sheets 3 of 4 & 4 of 4  
 (Atlantic version shown on sheets 1 of 4 & 2 of 4)

<small>THIS DRAWING IS A CONTROLLED DOCUMENT FOR TYCO ELECTRONICS CORPORATION. IT IS SUBJECT TO CHANGE AND THE CONTROLLING ORGANIZATION SHOULD BE CONTACTED FOR THE LATEST REVISION.</small>		DWN: K. HUANG CHK: S. XI APVD: S. XI DATE: 26NOV2012	NAME: Ocean Side Feed Applicator SIZE: A1 CAGE CODE: 00779 DRAWING NO: 2151794	DATE: 26NOV2012 NAME: TE Connectivity Harrisburg, PA 17105-3608
DIMENSIONS: mm TOLERANCES UNLESS OTHERWISE SPECIFIED: 0 PLC ± 1 PLC ± 2 PLC ± 3 PLC ± 4 PLC ± ANGLES FINISH ±	WEIGHT: - SCALE: 1:2 SHEET: 4 of 4 REV: L	RESTRICTED TO: -	CUSTOMER ACCESSIBLE PRODUCTION DRAWING	