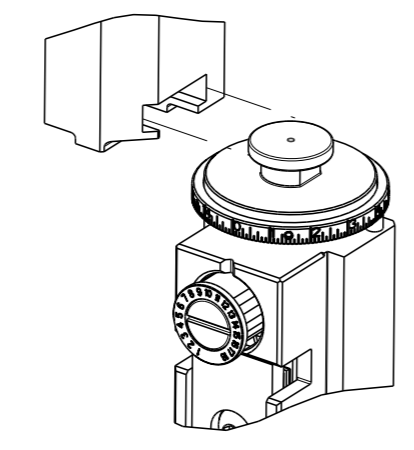


| PART NUMBER | REVISION | DESCRIPTION                            | FEED TYPE  |
|-------------|----------|--|------------|
| 2266103-1   | D        | FINE CRIMP HEIGHT ADJUST               | MECHANICAL |
| 2266103-2   | D        | FINE CRIMP HEIGHT ADJUST               | PNEUMATIC  |
| 5-2266103-1 | D        | SEAL STRIPPER CRIMPER TERMINATING UNIT | MECHANICAL |
| 5-2266103-2 | D        | SEAL STRIPPER CRIMPER TERMINATING UNIT | PNEUMATIC  |
| 7-2266103-1 | D        | MECHANICAL AND CRIMP TOOLING KIT       | MECHANICAL |
| 7-2266103-2 | D        | PNEUMATIC AND CRIMP TOOLING KIT        | PNEUMATIC  |
| 7-2266103-7 | C        | CRIMP TOOLING KIT                      | -          |
| 7-2266103-8 | C        | APPLICATOR CONVERSION KIT              | -          |

ATLANTIC VERSION TERMINATOR INTERFACE ADAPTER



APPLICATOR DATA

| CRIMP | SIZE           | TYPE |
|-------|----------------|------|
| WIRE  | 2.29 mm [.090] | F    |
| INSUL | 2.03 mm [.080] | O    |

APPLICATOR INSTRUCTIONS  
408-35042

APPLICATOR CONVERSION KITS

| PART NUMBER | INSULATION DIAMETER RANGE |
|-------------|---------------------------|
| 7-2266100-8 | Ø3.05-3.81mm [.120-.150]  |
| 7-2266101-8 | Ø2.67-3.02mm [.105-.119]  |
| 7-2266102-8 | Ø2.26-2.64mm [.089-.104]  |
| 7-2266103-8 | Ø1.93-2.24mm [.076-.088]  |
| 7-2266104-8 | Ø1.60-1.91mm [.063-.075]  |

TERMINAL DATA: DEUTSCH TERMINAL TE CRIMP SPECIFICATION

TERMINAL NAME: STAMPED CONTACT PIN SIZE 16

| WIRE STRIP LENGTH           | INSULATION DIAMETER RANGE    |
|-----------------------------|------------------------------|
| 3.81-5.09 mm [.150-.200 IN] | Ø1.93-2.24 mm [.076-.088 IN] |

TERMINAL APPLICATION SPECIFICATION 114-151000

TERMINALS APPLIED

| TE TERMINAL | DEUTSCH TERMINAL | TE TERMINAL | DEUTSCH TERMINAL |
|-------------|------------------|-------------|------------------|
| 286503-1    | 1060-16-0122     | 286503-2    | 1060-16-0144     |
| 286503-3    | 1060-16-0177     | 286503-7    | 1060-16-0722     |
| 286503-8    | 1060-16-0744     | 286503-9    | 1060-16-0777     |
| 1-286503-1  | 1060-16-0977     | 1-286503-2  | 1060-16-0988     |
| 1-286503-4  | AT60-16-0122     | 1-286503-5  | AT60-16-0144     |

TERMINAL DATA: DEUTSCH TERMINAL TE CRIMP SPECIFICATION

TERMINAL NAME: STAMPED CONTACT SOCKET SIZE 16

| WIRE STRIP LENGTH           | INSULATION DIAMETER RANGE    |
|-----------------------------|------------------------------|
| 3.81-5.09 mm [.150-.200 IN] | Ø1.93-2.24 mm [.076-.088 IN] |

TERMINAL APPLICATION SPECIFICATION 114-151000

TERMINALS APPLIED

| TE TERMINAL | DEUTSCH TERMINAL | TE TERMINAL | DEUTSCH TERMINAL |
|-------------|------------------|-------------|------------------|
| 286504-1    | 1062-16-0122     | 286504-2    | 1062-16-0144     |
| 286504-3    | 1062-16-0177     | 286504-7    | 1062-16-0722     |
| 286504-8    | 1062-16-0744     | 286504-9    | 1062-16-0777     |
| 1-286504-1  | 1062-16-0977     | 1-286504-2  | 1062-16-0988     |
| 1-286504-5  | AT62-16-0122     | 1-286504-6  | AT62-16-0144     |

| WIRE SIZE | CRIMP HEIGHT mm [INCH]             | CRIMP HEIGHT REFERENCE SETTING |
|-----------|------------------------------------|--------------------------------|
| 14 AWG    | 1.40+0.03/-0.05 [.055+.001/- .002] | 4.6                            |
| 2.00mm2   | 1.40+0.03/-0.05 [.055+.001/- .002] | 4.6                            |
| 1.50mm2   | 1.35+0.03/-0.05 [.053+.001/- .002] | 5.2                            |
| 16 AWG    | 1.27+0.03/-0.05 [.050+.001/- .002] | 6.0                            |
| 1.00mm2   | 1.27+0.03/-0.05 [.050+.001/- .002] | 6.0                            |
| 18 AWG    | 1.24+0.03/-0.05 [.049+.001/- .002] | 6.2                            |
| 0.75mm2   | 1.22+0.03/-0.05 [.048+.001/- .002] | 6.4                            |

**\*WARNING**  
 ON INSTALLATION, SET WIRE DISC TO CRIMP HEIGHT REFERENCE SETTING FOR LARGEST WIRE SIZE. CRIMP HEIGHT REFERENCE SETTINGS GREATER THAN THE VALUE SHOWN MAY CAUSE DAMAGE TO THE CRIMP TOOLING, REFER TO THE INSTRUCTION SHEET FOR PROPER SETUP AND ADJUSTMENTS.

- 1 RECOMMENDED SPARE PARTS
- 2 REFER TO SUPPLIED INSTRUCTION SHEET FOR CLEANING, LUBRICATION AND STORAGE OF APPLICATOR.
- 3 APPLY PART NUMBER 1-23419-5 LOCTITE TO THREADS OF ITEMS 180. APPLY PART NUMBER 2-23419-6 LOCTITE TO THREADS OF ITEM 242.
- 4 CRIMP HEIGHT REFERENCE SETTING WAS THE SETTING USED WHEN THE APPLICATOR WAS QUALIFIED AT THE FACTORY. ADJUSTMENT MAY BE NECESSARY WHEN RUNNING APPLICATOR IN THE FIELD.
- 5 SEE APPROPRIATE APPLICATOR LOG SHEETS FOR APPLIED TERMINALS, WIRE RANGE AND MEMORY CHIP.
- 6 TERMINAL LUBRICANT IS RECOMMENDED.
- 7. UNLESS SPECIFIED OTHERWISE TORQUE VALUES SHALL BE USED PER DOCUMENT, 101-35000.

| LOC | DIST | REV | DATE      | BY  | CHK | APPV |
|-----|------|-----|-----------|-----|-----|------|
| A   | 66   | C   | 10MAR2016 | MR  | GB  |      |
|     |      | C1  | 22APR2016 | RS  | LZ  |      |
|     |      | C2  | 07DEC2016 | YY  | JDG |      |
|     |      | D   | 20JUN2018 | JAH | JDG |      |

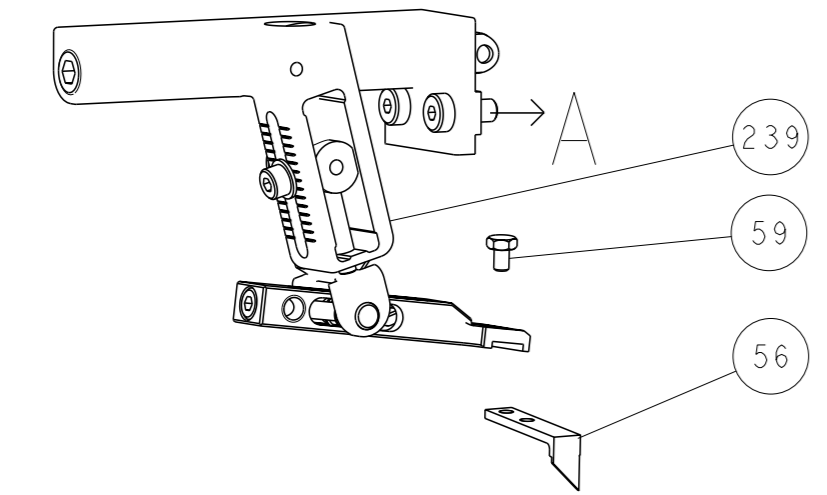
| REV | DATE | BY  | CHK | APPV | DESCRIPTION | ITEM NO                             |     |
|-----|------|-----|-----|------|-------------|-------------------------------------|-----|
| -   | -    | -   | -   | -    | 1803515-3   | RAM ASSEMBLY, SF ATLANTIC           | 293 |
| -   | -    | -   | -   | -    | 2-1803583-1 | APPLICATOR BASIC ASSEMBLY, SF       | 292 |
| -   | -    | 1   | 1   | 1    | 2119791-9   | DEPRESSOR, WIRE                     | 286 |
| -   | -    | 1   | -   | -    | 2119640-1   | PUSH ROD, AIR FEED                  | 250 |
| -   | -    | 1   | -   | -    | 1803259-1   | BUSHING, FLANGED                    | 249 |
| -   | -    | 1   | -   | -    | 2119641-1   | FEED CAM, AIR FEED                  | 248 |
| -   | -    | 1   | 1   | 1    | 2119082-9   | CAM, SNAIL, INSULATION ADJUSTMENT   | 244 |
| -   | -    | 1   | 1   | 1    | 2079764-1   | WASHER, WAVE SPRING, CREST-TO-CREST | 243 |
| -   | -    | 1   | 1   | 1    | 2119083-1   | RETAINER, INSULATION DIAL           | 242 |
| -   | -    | 1   | 1   | 1    | 7-18023-7   | SCR, SKT HD CAP M3 X 4.0            | 241 |
| -   | -    | 1   | -   | -    | 2119580-1   | MECHANICAL FEED ASSEMBLY            | 239 |
| -   | -    | 1   | -   | -    | 2063440-1   | AIR FEED MODULE                     | 238 |
| -   | -    | -   | 1   | 1    | 4-1722335-3 | STRIPPER, SIDE FEED                 | 182 |
| -   | -    | -   | 1   | 1    | 1-5018030-0 | NUT, HEX, REG, RoHS, M3.5           | 181 |
| -   | -    | -   | 1   | 1    | 2-1752354-1 | STANDOFF, HOLD-DOWN                 | 180 |
| -   | -    | -   | 1   | 1    | 993111-1    | PIN, SLOTTED SPRING 3.0 X 20.0      | 177 |
| -   | -    | -   | 1   | 1    | 5-22280-0   | SPRING, COMPRESSION                 | 176 |
| -   | -    | -   | 1   | 1    | 1752353-3   | GUIDE PIN, HOLDDOWN                 | 175 |
| -   | -    | -   | 1   | 1    | 1901680-2   | GUIDE PIN, HOLDDOWN                 | 174 |
| -   | -    | 2   | -   | -    | 21045-3     | RING, RETAIN, EXTERN, 3/16 CRESCENT | 172 |
| -   | -    | REF | REF | REF  | 994970-2    | COUNTER, MAGNETIC                   | 164 |
| -   | -    | 1   | -   | -    | 240638-1    | SPRING, FEED FINGER                 | 163 |
| -   | -    | 1   | -   | -    | 3-23627-7   | PIN, RETAIN, GRVD, 3/16 X .854      | 137 |
| -   | -    | 1   | -   | -    | 2119799-1   | HOLDER, FEED FINGER, AF             | 136 |
| -   | -    | 1   | 1   | 1    | 2119955-1   | ASSY, LUBRICATOR, SIDE FEED         | 113 |
| -   | -    | 1   | 1   | 1    | 2844908-1   | SCREW, LOCKING                      | 99  |
| -   | -    | 1   | 1   | 1    | 2844907-1   | POST, LOCKING                       | 98  |
| 1   | -    | 1   | 1   | 1    | 455888-7    | SPACER, CRIMPER                     | 82  |
| 1   | -    | -   | -   | -    | 2266103     | PRINT, APPLICATOR LOG SHEET         | 72  |
| -   | -    | 1   | 1   | 1    | 1803607-1   | DOCUMENTATION PACKAGE               | 71  |
| -   | -    | 1   | 1   | 1    | 2119791-9   | DEPRESSOR, WIRE                     | 70  |
| -   | -    | 1   | 1   | 1    | 2119740-1   | TAG, IDENTIFICATION                 | 67  |
| -   | -    | 2   | 2   | 2    | 2168078-1   | SCREW, DRIVE, RH, RoHS, 2 x .188    | 66  |
| -   | -    | 1   | 1   | 1    | 2168083-2   | SCR, SKT HD CAP, RoHS, M4 X 8.0     | 60  |
| -   | -    | 1   | 1   | 1    | 5-18022-5   | SCR, HEX HD CAP, M4 X 6.0           | 59  |
| -   | -    | 1   | 1   | 1    | 1338685-1   | PAWL, FEED                          | 56  |
| -   | -    | 4   | 4   | 4    | 2168083-3   | SCR, SKT HD CAP, RoHS, M4 X 12.0    | 54  |
| -   | -    | 2   | 2   | 2    | 1-2168083-0 | SCR, SKT HD CAP, RoHS, M4 X 10      | 53  |
| -   | -    | 1   | 1   | 1    | 5018030-1   | NUT, HEX, REG, RoHS, M3             | 52  |
| -   | -    | 1   | 1   | 1    | 811242-5    | BUMPER, HOLD DOWN                   | 51  |
| -   | -    | 1   | 1   | 1    | 690753-2    | SPACER, TONKER                      | 50  |
| -   | -    | 1   | 2   | 2    | 18023-9     | SCR, SKT HD CAP M4 X 6.0            | 49  |
| -   | -    | 1   | -   | -    | 2119652-1   | FEED CAM, PRE FEED                  | 48  |
| -   | -    | 1   | -   | -    | 2119653-1   | FEED CAM, POST FEED                 | 47  |
| -   | -    | 1   | -   | -    | 1803583-9   | APPLICATOR BASIC ASSEMBLY, SF       | 46  |
| -   | -    | 1   | -   | -    | 1803515-1   | RAM ASSEMBLY, SF ATLANTIC           | 44  |
| -   | -    | 1   | 1   | 1    | 1803602-1   | SCR, BHSC, RoHS (M8 X 25)           | 41  |
| -   | -    | 1   | 1   | 1    | 2-1752356-0 | SUPPORT, TERMINAL                   | 34  |
| -   | -    | 2   | 2   | 2    | 2079383-5   | SCR, BHSC, RoHS (M4 X 20)           | 33  |
| -   | -    | 2   | 2   | 2    | 2-2844962-8 | SPACER, CYLINDRICAL, STRIP GUIDE    | 30  |
| -   | -    | 1   | 1   | 1    | 2844992-1   | ASSEMBLY, STRIP GUIDE               | 29  |
| -   | -    | 1   | 1   | 1    | 1320928-2   | STRIP GUIDE                         | 24  |
| -   | -    | 1   | -   | -    | 2168083-2   | SCR, SKT HD CAP, RoHS, M4 X 8.0     | 21  |
| -   | -    | 2   | 2   | 2    | 1-18028-2   | WASHER, FLAT, REG M4                | 20  |
| -   | -    | 1   | -   | -    | 2119533-1   | STRIPPER, SIDE FEED                 | 19  |
| -   | -    | 1   | 1   | 1    | 2119806-1   | INSERT, SHEAR                       | 13  |
| -   | -    | 1   | 1   | 1    | 3-22280-3   | SPRING, COMPRESSION                 | 12  |
| -   | -    | 1   | 1   | 1    | 1-356885-4  | STOP, SHEAR                         | 11  |
| -   | -    | 1   | 1   | 1    | 2119805-1   | SHEAR HOLDER, FRONT                 | 10  |
| -   | -    | 1   | 1   | 1    | 1803095-1   | FLOATING SHEAR, FRONT               | 9   |
| 1   | 1    | 2   | 2   | 1    | 1803293-4   | ANVIL, COMBINATION DEUTSCH STYLE    | 8   |
| -   | -    | -   | -   | -    | -           | -                                   | 7   |
| -   | -    | -   | -   | -    | -           | -                                   | 6   |
| -   | -    | 1   | 1   | 1    | 2119757-8   | DEPRESSOR, SHEAR                    | 5   |
| -   | -    | 1   | 1   | 1    | 238011-9    | BLOCK, CRIMPER SPACER               | 4   |
| 1   | 1    | 2   | 2   | 1    | 1803019-6   | CRIMPER, INSULATION O               | 3   |
| 1   | -    | 1   | 1   | 1    | 455888-4    | SPACER, CRIMPER                     | 2   |
| 1   | -    | 2   | 2   | 1    | 2-1633713-6 | CRIMPER, WIRE PREMIUM               | 1   |

ATLANTIC VERSION  
 Shown on sheets 1 of 4 & 2 of 4  
 (Pacific version shown on sheets 3 of 4 & 4 of 4)

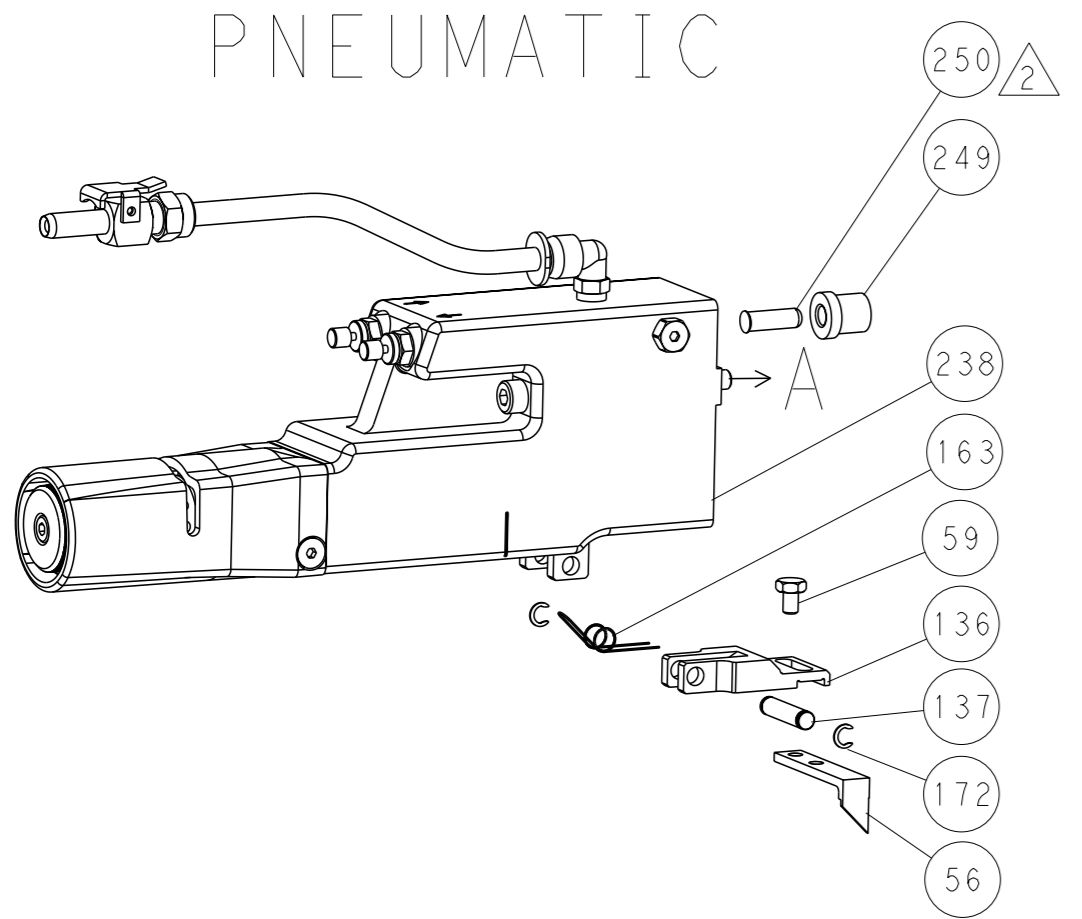
| DIMENSIONS: | TOLERANCES UNLESS OTHERWISE SPECIFIED:                          | OWN        | CHK       | APPV        | NAME                       | SIZE | CAGE CODE | DRAWING NO | RESTRICTED TO                          |
|-------------|---|------------|-----------|-------------|----------------------------|------|-----------|------------|--|
| mm          | 0 PLC ±<br>1 PLC ±<br>2 PLC ±<br>3 PLC ±<br>4 PLC ±<br>ANGLES ± | R. KNEPPER | G. BAILEY | M. CLIFFORD | Ocean Side Feed Applicator | A1   | 00779     | 2266103    | Customer Accessible Production Drawing |

| LOC | DIST | REVISIONS   |      |     |      |
|-----|------|-------------|------|-----|------|
| A   | 66   | REV         | DATE | OWN | APVD |
| -   | -    | SEE SHEET 1 | -    | -   | -    |

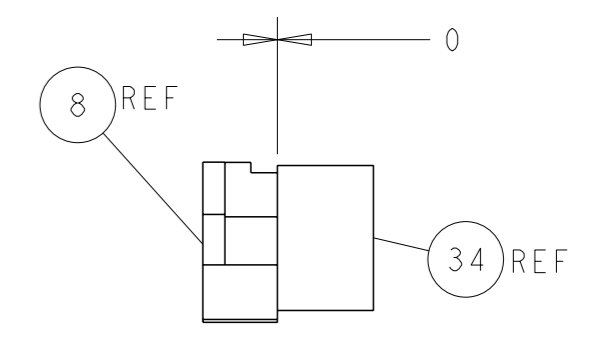
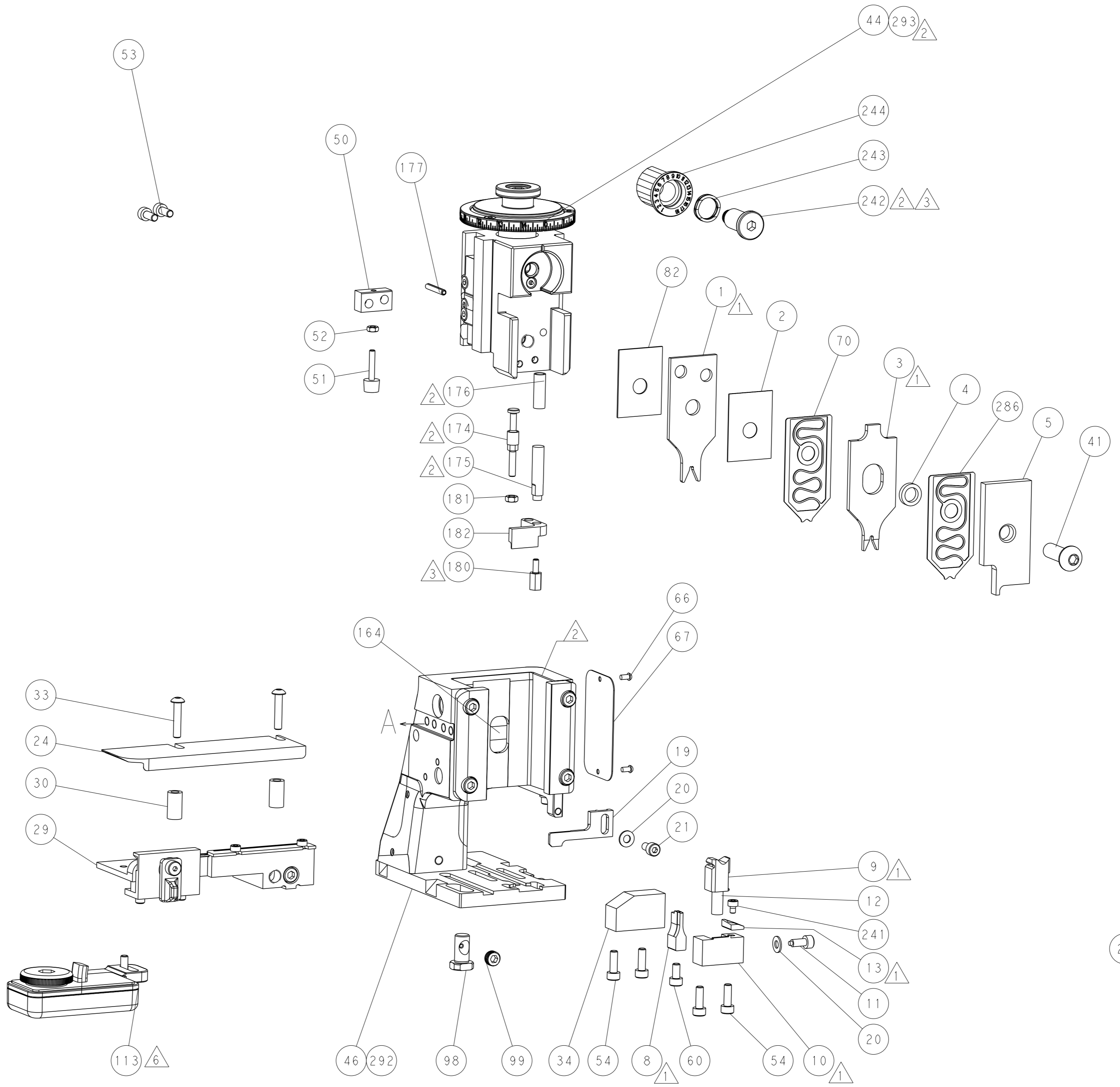
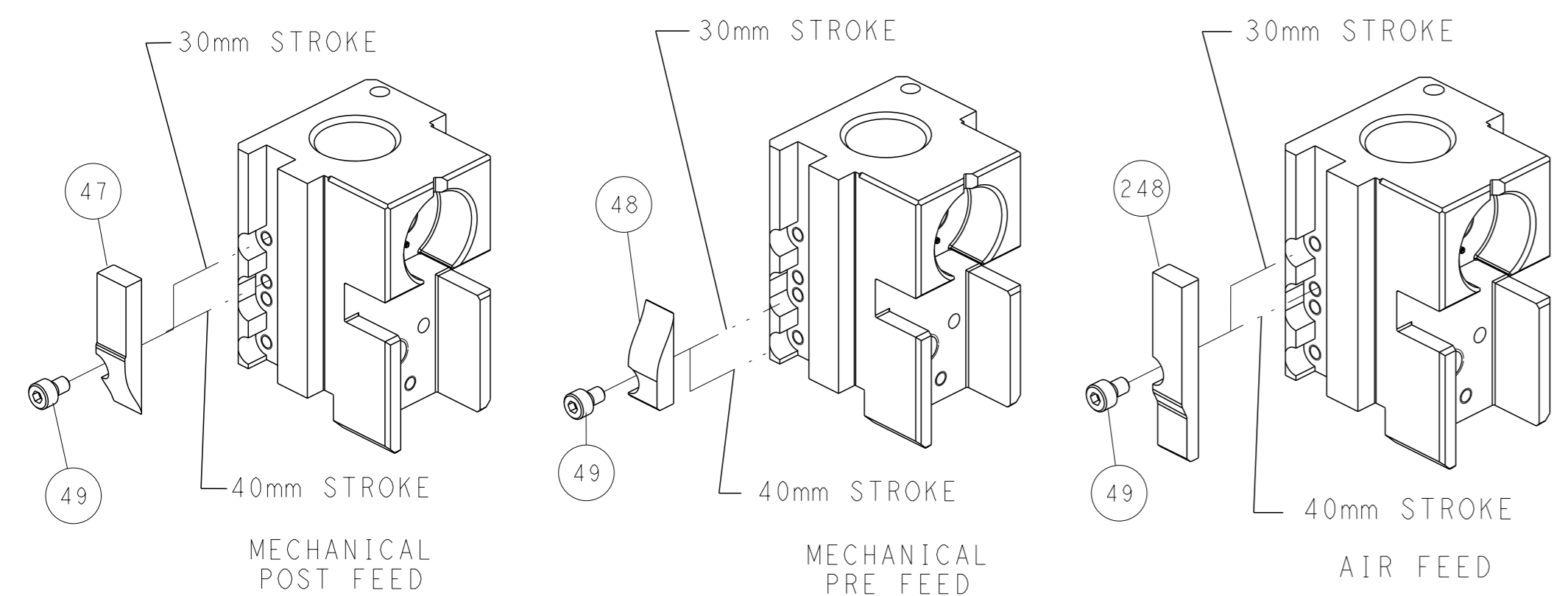
# FEED TYPE MECHANICAL



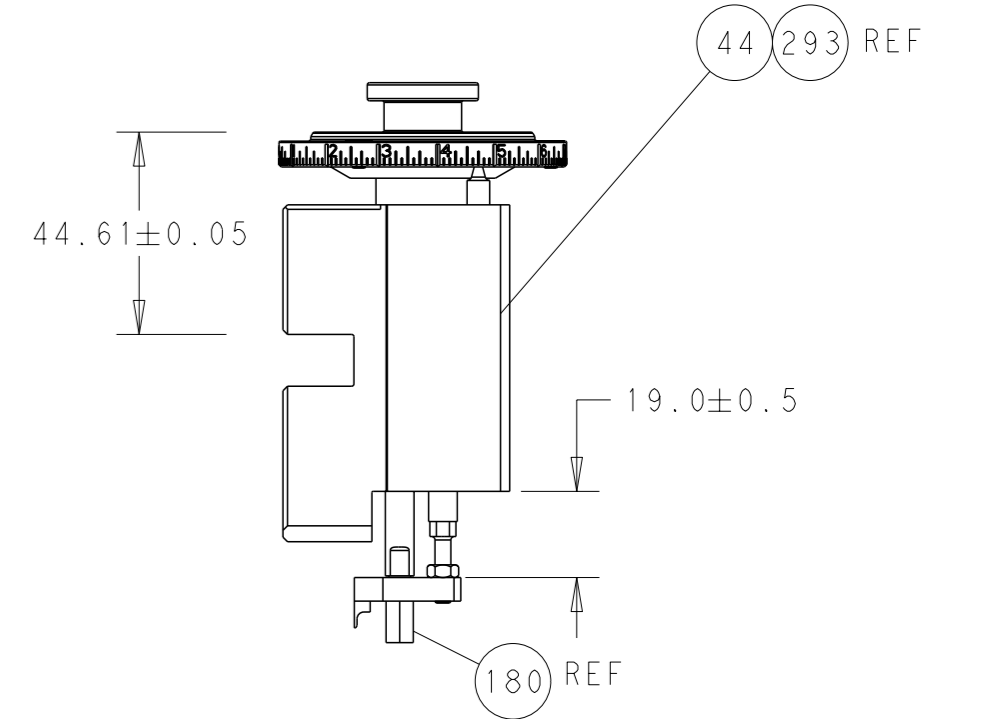
# PNEUMATIC



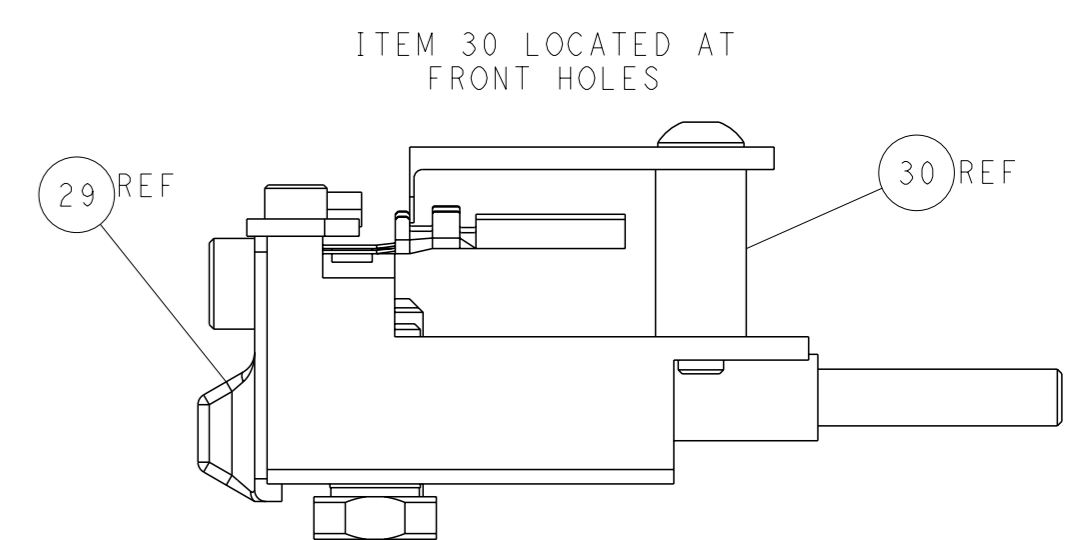
# CAM POSITIONS



TERMINAL SUPPORT LOCATION



RAM AND HOLDDOWN SET-UP



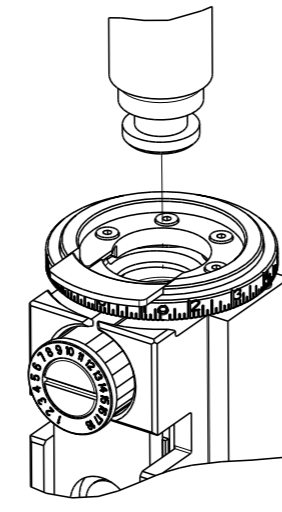
FEED TRACK POSITION GUIDE BY INSULATION BARREL

**ATLANTIC VERSION**  
 Shown on sheets 1 of 4 & 2 of 4  
 (Pacific version shown on sheets 3 of 4 & 4 of 4)

|   |  |  |  |  |
|---|--|--|--|--|
| DIMENSIONS: mm<br>TOLERANCES UNLESS OTHERWISE SPECIFIED:<br>0 PLC ±<br>1 PLC ±<br>2 PLC ±<br>3 PLC ±<br>4 PLC ±<br>ANGLES ±<br>FINISH ± |  | OWN: R. KNEPPER 04-Oct-13<br>CHK: G. BAILEY 04-Oct-13<br>APVD: M. CLIFFORD 04-Oct-13<br>PRODUCT SPEC<br>APPLICATION SPEC<br>WEIGHT<br>Customer Accessible Production Drawing | NAME: Ocean Side Feed Applicator<br>SIZE: A1<br>CAGE CODE: 00779<br>DRAWING NO: C=2266103<br>SCALE: 1:2<br>SHEET: 2 of 4<br>REV: D | TE Connectivity<br>Harrisburg, PA 17105-3608 |
|---|--|--|--|--|

| PART NUMBER | REVISION | DESCRIPTION               | FEED TYPE  |
|-------------|----------|---------------------------|------------|
| 2-2266103-1 | D        | FINE CRIMP HEIGHT ADJUST  | MECHANICAL |
| 2-2266103-2 | D        | FINE CRIMP HEIGHT ADJUST  | PNEUMATIC  |
| 7-2266103-7 | C        | CRIMP TOOLING KIT         | -          |
| 7-2266103-8 | C        | APPLICATOR CONVERSION KIT | -          |

PACIFIC VERSION TERMINATOR  
INTERFACE ADAPTER



| APPLICATOR DATA |                |      |
|-----------------|----------------|------|
| CRIMP           | SIZE           | TYPE |
| WIRE            | 2.29 mm [.090] | F    |
| INSUL           | 2.03 mm [.080] | O    |

APPLICATOR INSTRUCTIONS  
408-35042

| APPLICATOR CONVERSION KITS |                           |
|----------------------------|---------------------------|
| PART NUMBER                | INSULATION DIAMETER RANGE |
| 7-2266100-8                | Ø 3.05-3.81mm [.120-.150] |
| 7-2266101-8                | Ø 2.67-3.02mm [.105-.119] |
| 7-2266102-8                | Ø 2.26-2.64mm [.089-.104] |
| 7-2266103-8                | Ø 1.93-2.24mm [.076-.088] |
| 7-2266104-8                | Ø 1.60-1.91mm [.063-.075] |

| TERMINAL DATA: DEUTSCH TERMINAL TE CRIMP SPECIFICATION |                               |                                    |                        |
|--|-------------------------------|------------------------------------|------------------------|
| TERMINAL NAME: STAMPED CONTACT PIN SIZE 16             |                               |                                    |                        |
| WIRE STRIP LENGTH                                      | INSULATION DIAMETER RANGE     | TERMINAL APPLICATION SPECIFICATION | TE CRIMP SPECIFICATION |
| 3.81-5.09 mm [.150-.200 IN]                            | Ø 1.93-2.24 mm [.076-.088 IN] | 114-151000                         |                        |
| TERMINALS APPLIED                                      |                               |                                    |                        |
| TE TERMINAL  | DEUTSCH TERMINAL              | TE TERMINAL                        | DEUTSCH TERMINAL       |
| 286503-1   | 1060-16-0122                  | 286503-2                           | 1060-16-0144           |
| 286503-3   | 1060-16-0177                  | 286503-7                           | 1060-16-0722           |
| 286503-8   | 1060-16-0744                  | 286503-9                           | 1060-16-0777           |
| 1-286503-1   | 1060-16-0977                  | 1-286503-2                         | 1060-16-0988           |
| 1-286503-4   | AT60-16-0122                  | 1-286503-5                         | AT60-16-0144           |

| TERMINAL DATA: DEUTSCH TERMINAL TE CRIMP SPECIFICATION |                               |                                    |                        |
|--|-------------------------------|------------------------------------|------------------------|
| TERMINAL NAME: STAMPED CONTACT SOCKET SIZE 16          |                               |                                    |                        |
| WIRE STRIP LENGTH                                      | INSULATION DIAMETER RANGE     | TERMINAL APPLICATION SPECIFICATION | TE CRIMP SPECIFICATION |
| 3.81-5.09 mm [.150-.200 IN]                            | Ø 1.93-2.24 mm [.076-.088 IN] | 114-151000                         |                        |
| TERMINALS APPLIED                                      |                               |                                    |                        |
| TE TERMINAL  | DEUTSCH TERMINAL              | TE TERMINAL                        | DEUTSCH TERMINAL       |
| 286504-1   | 1062-16-0122                  | 286504-2                           | 1062-16-0144           |
| 286504-3   | 1062-16-0177                  | 286504-7                           | 1062-16-0722           |
| 286504-8   | 1062-16-0744                  | 286504-9                           | 1062-16-0777           |
| 1-286504-1   | 1062-16-0977                  | 1-286504-2                         | 1062-16-0988           |
| 1-286504-5   | AT62-16-0122                  | 1-286504-6                         | AT62-16-0144           |

| WIRE SIZE | CRIMP HEIGHT mm [INCH]             | CRIMP HEIGHT REFERENCE SETTING |
|-----------|------------------------------------|--------------------------------|
| 14 AWG    | 1.40+0.03/-0.05 [.055+.001/-0.002] | 4.6                            |
| 2.00mm2   | 1.40+0.03/-0.05 [.055+.001/-0.002] | 4.6                            |
| 1.50mm2   | 1.35+0.03/-0.05 [.053+.001/-0.002] | 5.2                            |
| 16 AWG    | 1.27+0.03/-0.05 [.050+.001/-0.002] | 6.0                            |
| 1.00mm2   | 1.27+0.03/-0.05 [.050+.001/-0.002] | 6.0                            |
| 18 AWG    | 1.24+0.03/-0.05 [.049+.001/-0.002] | 6.2                            |
| 0.75mm2   | 1.22+0.03/-0.05 [.048+.001/-0.002] | 6.4                            |

**\*WARNING**  
ON INSTALLATION, SET WIRE DISC TO CRIMP HEIGHT REFERENCE SETTING FOR LARGEST WIRE SIZE. CRIMP HEIGHT REFERENCE SETTINGS GREATER THAN THE VALUE SHOWN MAY CAUSE DAMAGE TO THE CRIMP TOOLING, REFER TO THE INSTRUCTION SHEET FOR PROPER SETUP AND ADJUSTMENTS.

- 1 RECOMMENDED SPARE PARTS
  - 2 REFER TO SUPPLIED INSTRUCTION SHEET FOR CLEANING, LUBRICATION AND STORAGE OF APPLICATOR.
  - 3 APPLY PART NUMBER 2-23419-6 LOCTITE TO THREADS OF ITEM 242.
  - 4 CRIMP HEIGHT REFERENCE SETTING WAS THE SETTING USED WHEN THE APPLICATOR WAS QUALIFIED AT THE FACTORY. ADJUSTMENT MAY BE NECESSARY WHEN RUNNING APPLICATOR IN THE FIELD.
  - 5 SEE APPROPRIATE APPLICATOR LOG SHEETS FOR APPLIED TERMINALS, WIRE RANGE AND MEMORY CHIP.
  - 6 TERMINAL LUBRICANT IS RECOMMENDED.
7. UNLESS SPECIFIED OTHERWISE TORQUE VALUES SHALL BE USED PER DOCUMENT, 101-35000.

| LOC | DIST | REVISIONS |     |             |      |     |      |
|-----|------|-----------|-----|-------------|------|-----|------|
|     |      | P         | LYR | DESCRIPTION | DATE | OWN | APVD |
| A   | 66   | -         | -   | SEE SHEET 1 | -    | -   | -    |

|   |   |     |     |             |                                     |     |
|---|---|-----|-----|-------------|-------------------------------------|-----|
| - | - | 1   | 1   | 2119791-9   | DEPRESSOR, WIRE                     | 286 |
| - | - | 1   | -   | 2119640-1   | PUSH ROD, AIR FEED                  | 250 |
| - | - | 1   | -   | 1803259-1   | BUSHING, FLANGED                    | 249 |
| - | - | 1   | 1   | 2119082-9   | CAM, SNAIL, INSULATION ADJUSTMENT   | 244 |
| - | - | 1   | 1   | 2079764-1   | WASHER, WAVE SPRING, CREST-TO-CREST | 243 |
| - | - | 1   | 1   | 2119083-1   | RETAINER, INSULATION DIAL           | 242 |
| - | - | 1   | 1   | 7-18023-7   | SCR, SKT HD CAP M3 X 4.0            | 241 |
| - | - | -   | 1   | 2119580-1   | MECHANICAL FEED ASSEMBLY            | 239 |
| - | - | 1   | -   | 2063440-1   | AIR FEED MODULE                     | 238 |
| - | - | 2   | -   | 21045-3     | RING, RETAIN, EXTERN, 3/16 CRESCENT | 172 |
| - | - | REF | REF | 994970-2    | COUNTER, MAGNETIC                   | 164 |
| - | - | 1   | -   | 240638-1    | SPRING, FEED FINGER                 | 163 |
| - | - | 1   | -   | 2119641-2   | FEED CAM, AIR FEED                  | 151 |
| - | - | 1   | 1   | 2168083-8   | SCR, SKT HD CAP, RoHS, M4 X 16      | 144 |
| - | - | 4   | 4   | 2168083-9   | SCR, SKT HD CAP, RoHS, M4 X 20      | 143 |
| - | - | -   | 1   | 2119653-2   | FEED CAM, POST FEED                 | 142 |
| - | - | 1   | 1   | 1-1803583-0 | APPLICATOR BASIC ASSEMBLY, SF       | 141 |
| - | - | 1   | 1   | 1803516-1   | RAM ASSEMBLY, SF PACIFIC            | 140 |
| - | - | 1   | -   | 3-23627-7   | PIN, RETAIN, GRVD, 3/16 X .854      | 137 |
| - | - | 1   | -   | 2119799-1   | HOLDER, FEED FINGER, AF             | 136 |
| - | - | 1   | 1   | 2119955-1   | ASSY, LUBRICATOR, SIDE FEED         | 113 |
| - | - | 1   | 1   | 2844908-1   | SCREW, LOCKING                      | 99  |
| - | - | 1   | 1   | 2844907-1   | POST, LOCKING                       | 98  |
| 1 | - | 1   | 1   | 455888-7    | SPACER, CRIMPER                     | 82  |
| 1 | - | -   | -   | 2266103     | PRINT, APPLICATOR LOG SHEET         | 72  |
| - | - | 1   | 1   | 1803607-1   | DOCUMENTATION PACKAGE               | 71  |
| - | - | 1   | 1   | 2119791-9   | DEPRESSOR, WIRE                     | 70  |
| - | - | 1   | 1   | 2119740-1   | TAG, IDENTIFICATION                 | 67  |
| - | - | 2   | 2   | 2168078-1   | SCREW, DRIVE, RH, RoHS, 2 x .188    | 66  |
| - | - | 1   | 1   | 5-18022-5   | SCR, HEX HD CAP, M4 X 6.0           | 59  |
| - | - | 1   | 1   | 1338685-1   | PAWL, FEED                          | 56  |
| - | - | 2   | 2   | 1-2168083-0 | SCR, SKT HD CAP, RoHS, M4 X 10      | 53  |
| - | - | 1   | 1   | 5018030-1   | NUT, HEX, REG, RoHS, M3             | 52  |
| - | - | 1   | 1   | 811242-5    | BUMPER, HOLD DOWN                   | 51  |
| - | - | 1   | 1   | 690753-2    | SPACER, TONKER                      | 50  |
| - | - | 1   | 2   | 18023-9     | SCR, SKT HD CAP M4 X 6.0            | 49  |
| - | - | -   | 1   | 2119652-1   | FEED CAM, PRE FEED                  | 48  |
| - | - | 1   | 1   | 1803602-1   | SCR, BHSC, RoHS (M8 X 25)           | 41  |
| - | - | 1   | 1   | 2-1752356-0 | SUPPORT, TERMINAL                   | 34  |
| - | - | 2   | 2   | 2079383-5   | SCR, BHSC, RoHS (M4 X 20)           | 33  |
| - | - | 2   | 2   | 2-2844962-8 | SPACER, CYLINDRICAL, STRIP GUIDE    | 30  |
| - | - | 1   | 1   | 2844992-1   | ASSEMBLY, STRIP GUIDE               | 29  |
| - | - | 1   | 1   | 1320928-2   | STRIP GUIDE                         | 24  |
| - | - | 1   | 1   | 2168083-2   | SCR, SKT HD CAP, RoHS, M4 X 8.0     | 21  |
| - | - | 2   | 2   | 1-18028-2   | WASHER, FLAT, REG M4                | 20  |
| - | - | 1   | 1   | 2119533-1   | STRIPPER, SIDE FEED                 | 19  |
| - | - | 1   | 1   | 2119806-1   | INSERT, SHEAR                       | 13  |
| - | - | 1   | 1   | 3-22280-3   | SPRING, COMPRESSION                 | 12  |
| - | - | 1   | 1   | 1-356885-4  | STOP, SHEAR                         | 11  |
| - | - | 1   | 1   | 2119805-1   | SHEAR HOLDER, FRONT                 | 10  |
| - | - | 1   | 1   | 1803095-1   | FLOATING SHEAR, FRONT               | 9   |
| - | - | 1   | 1   | 1803293-4   | ANVIL, COMBINATION DEUTSCH STYLE    | 8   |
| - | - | -   | -   | -           | -                                   | 7   |
| - | - | -   | -   | -           | -                                   | 6   |
| - | - | 1   | 1   | 2119757-8   | DEPRESSOR, SHEAR                    | 5   |
| - | - | 1   | 1   | 238011-9    | BLOCK, CRIMPER SPACER               | 4   |
| - | - | 1   | 1   | 1803019-6   | CRIMPER, INSULATION O               | 3   |
| - | - | 1   | 1   | 455888-4    | SPACER, CRIMPER                     | 2   |
| - | - | 1   | 1   | 2-1633713-6 | CRIMPER, WIRE PREMIUM               | 1   |

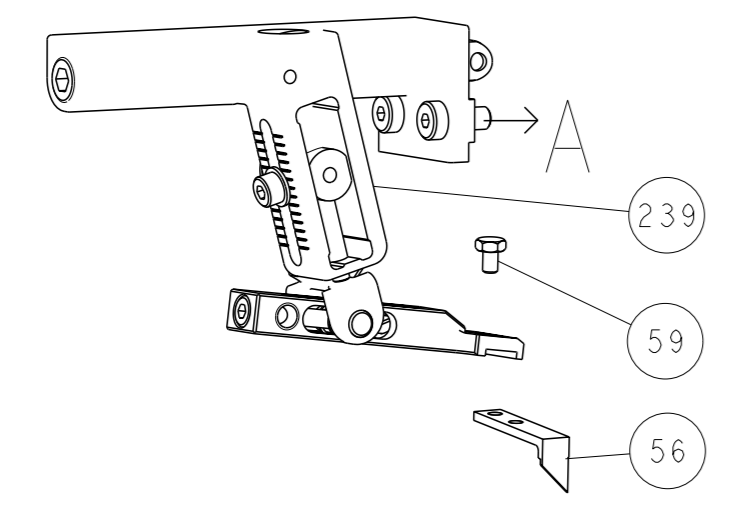
PACIFIC VERSION  
Shown on sheets 3 of 4 & 4 of 4  
(Atlantic version shown on sheets 1 of 4 & 2 of 4)

| DIMENSIONS: |         | TOLERANCES UNLESS OTHERWISE SPECIFIED: |         | APPLICATOR DATA |         |
|-------------|---------|--|---------|-----------------|---------|
| mm          | 0 PLC ± | 1 PLC ±                                | 2 PLC ± | 3 PLC ±         | 4 PLC ± |
|             | ANGLES  | FINISH                                 |         |                 |         |
| MATERIAL    |         | WEIGHT                                 |         |                 |         |

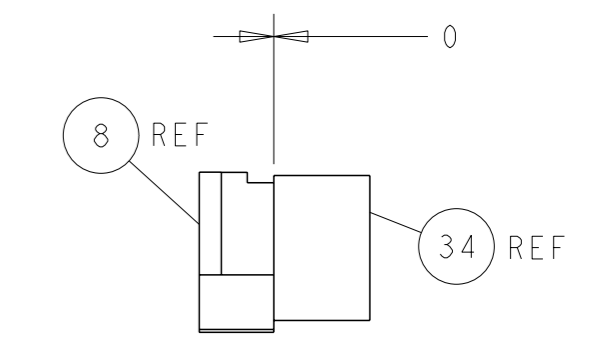
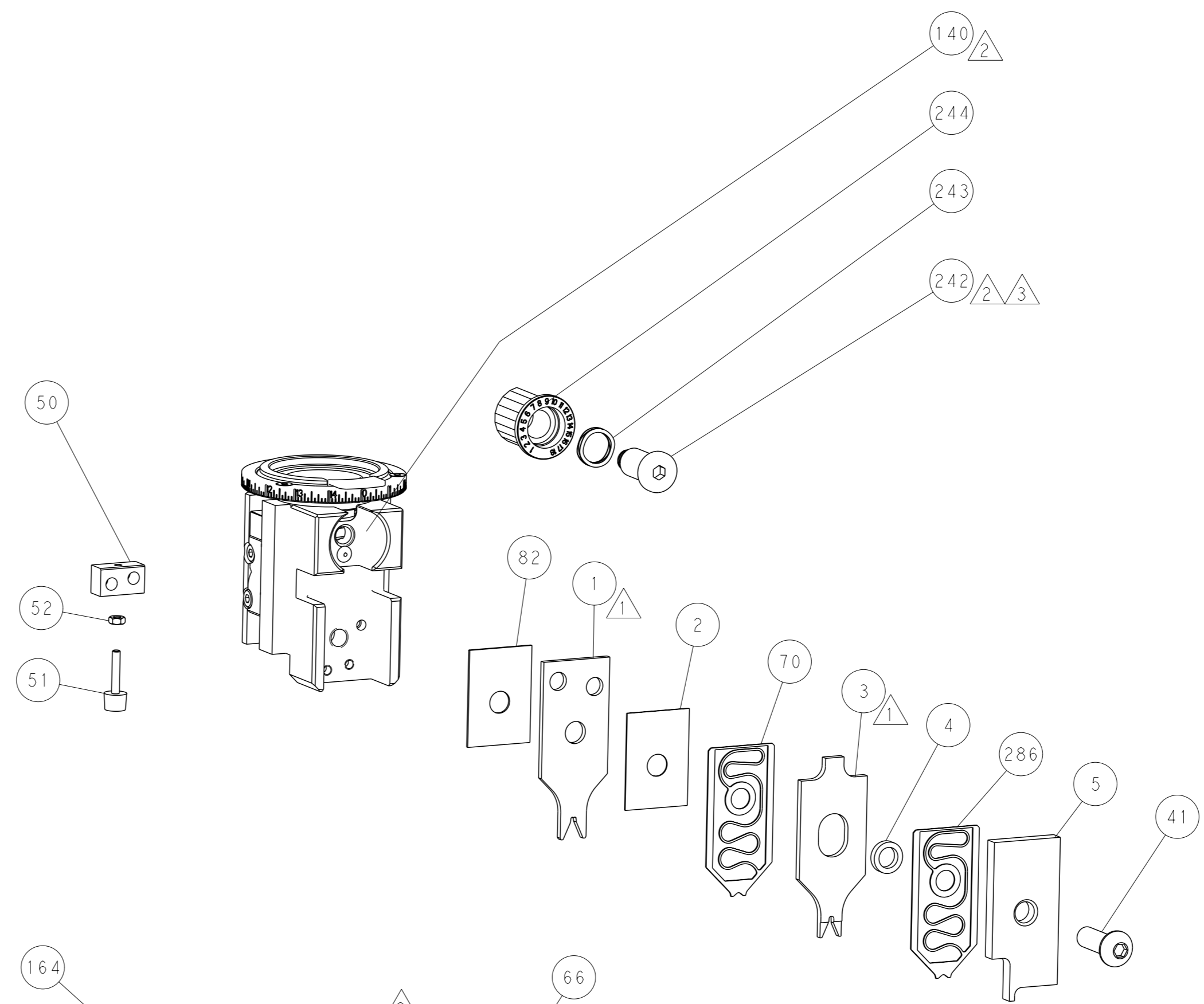
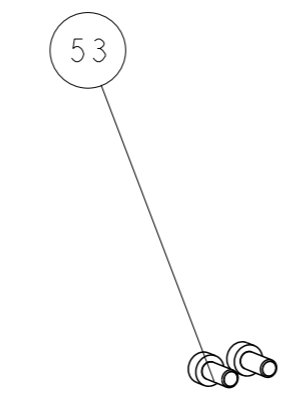
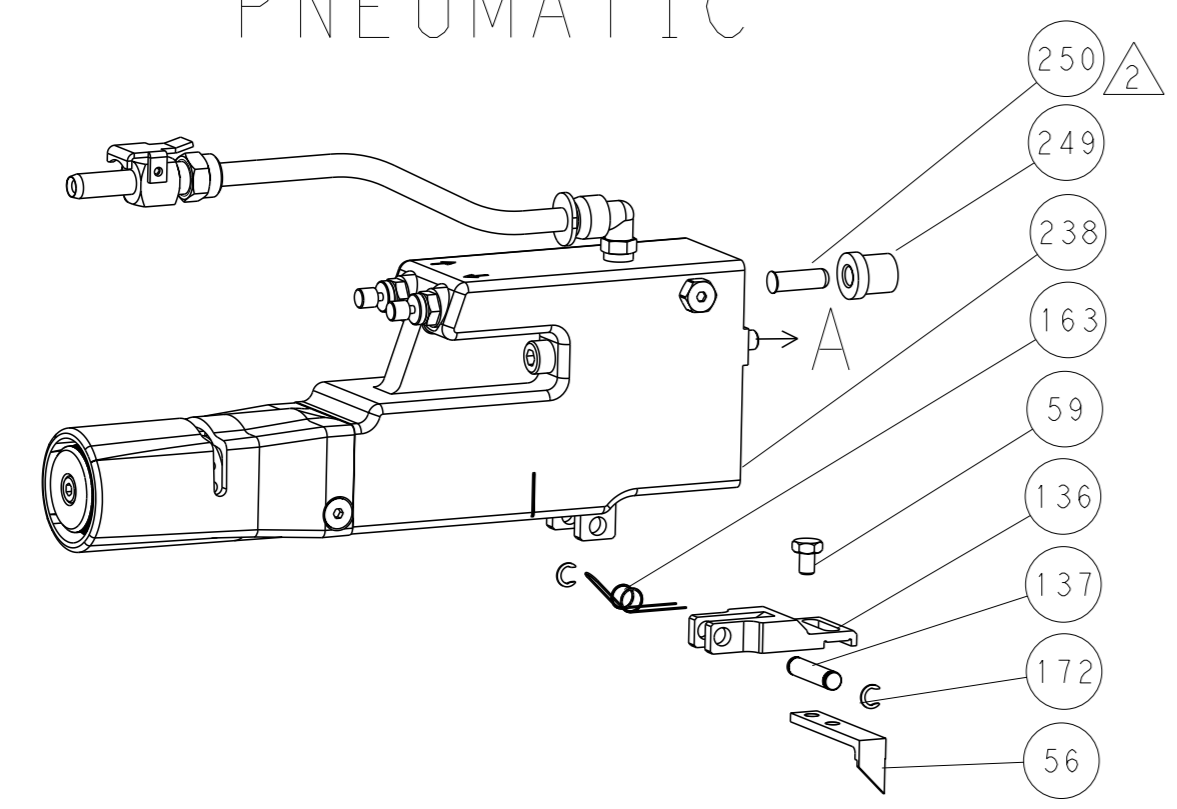
|  |                            |              |
|--|----------------------------|--------------|
| OWN                                    | R. KNEPPER                 | 04-Oct-13    |
| CHK                                    | G. BAILEY                  | 04-Oct-13    |
| APVD                                   | M. CLIFFORD                | 04-Oct-13    |
| NAME                                   | Ocean Side Feed Applicator |              |
| SIZE                                   | CAGE CODE                  | DRAWING NO   |
| A1                                     | 00779                      | 2266103      |
| Customer Accessible Production Drawing |                            |              |
| SCALE                                  | 1:2                        | SHEET 3 of 4 |

| LOC |    | DIST |     | REVISIONS   |      |     |      |
|-----|----|------|-----|-------------|------|-----|------|
| A   | 66 | P    | LYR | DESCRIPTION | DATE | OWN | APVD |
|     |    | -    |     | SEE SHEET 1 | -    | -   | -    |

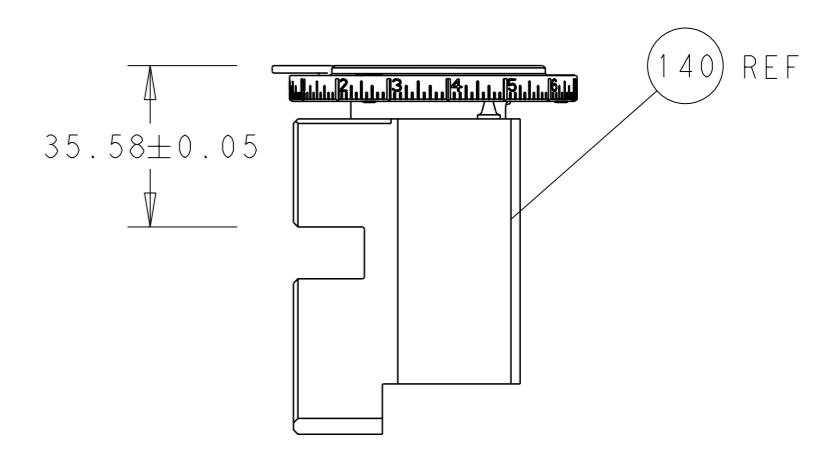
# FEED TYPE MECHANICAL



# PNEUMATIC

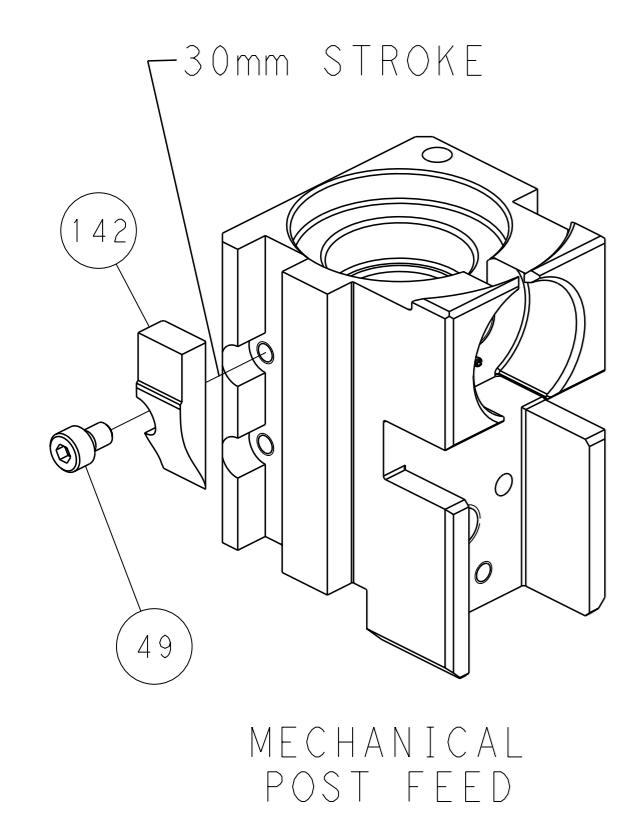


TERMINAL SUPPORT LOCATION

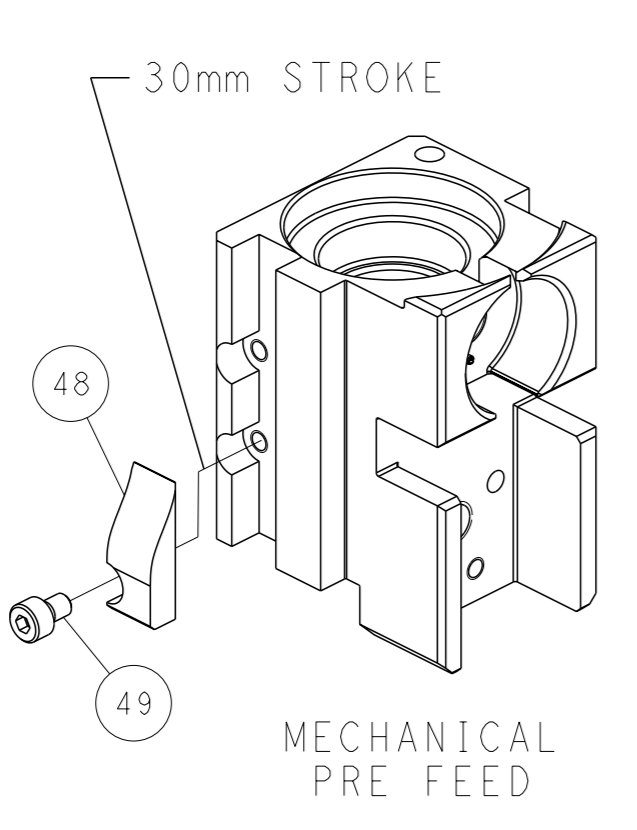


RAM SET-UP

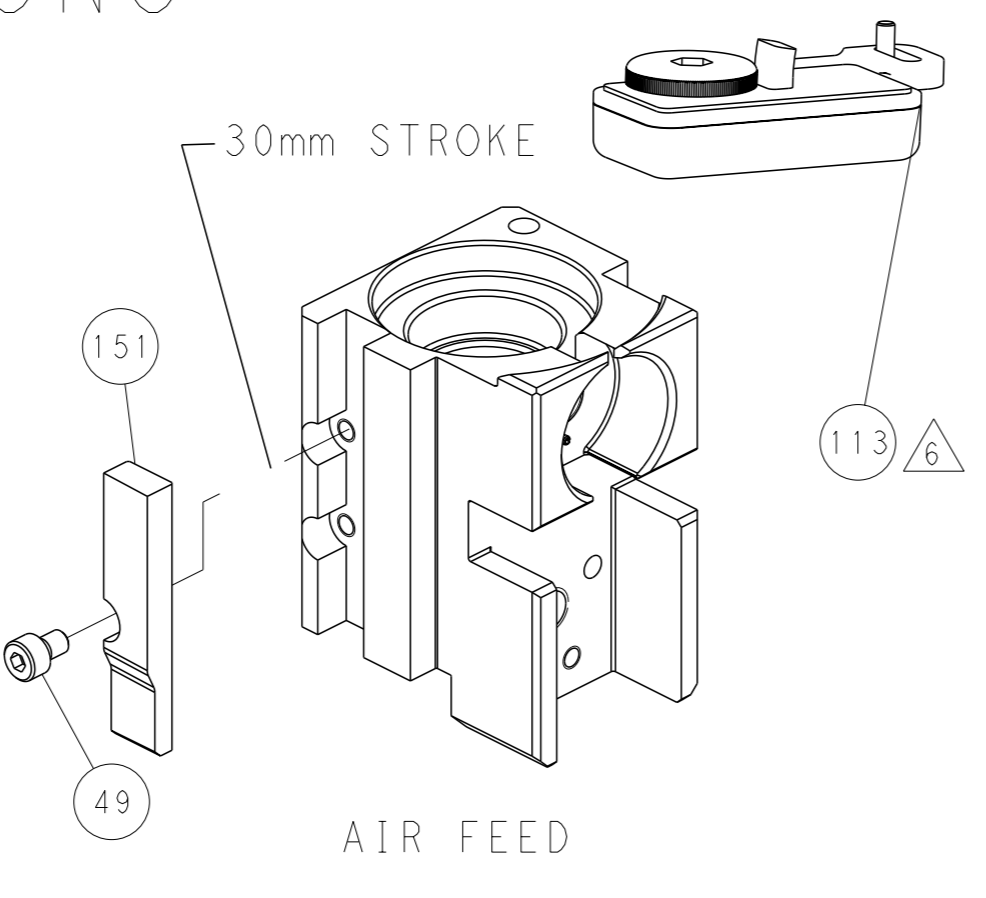
# CAM POSITIONS



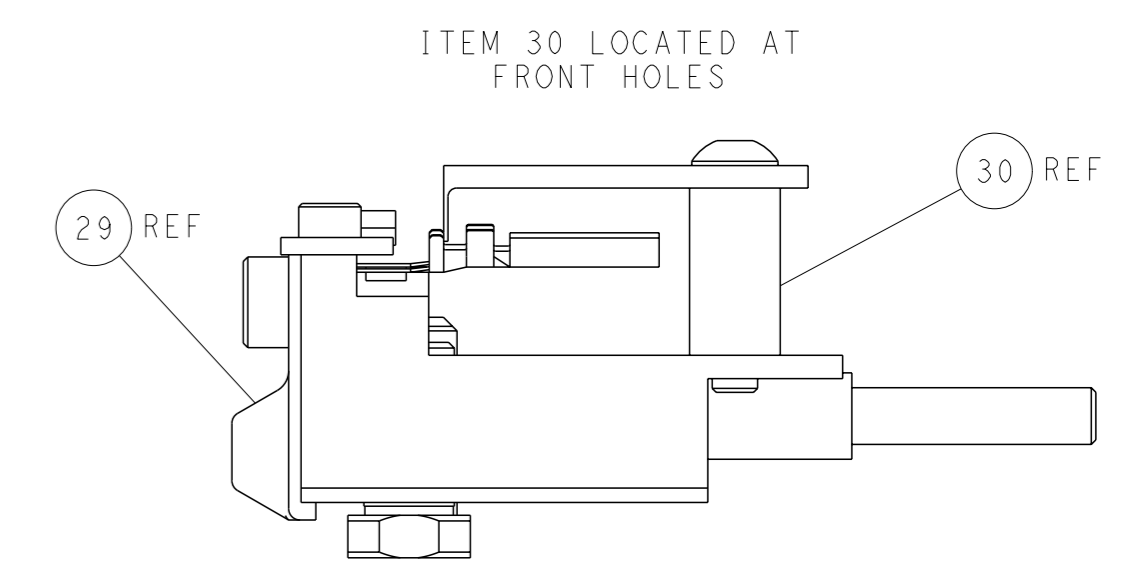
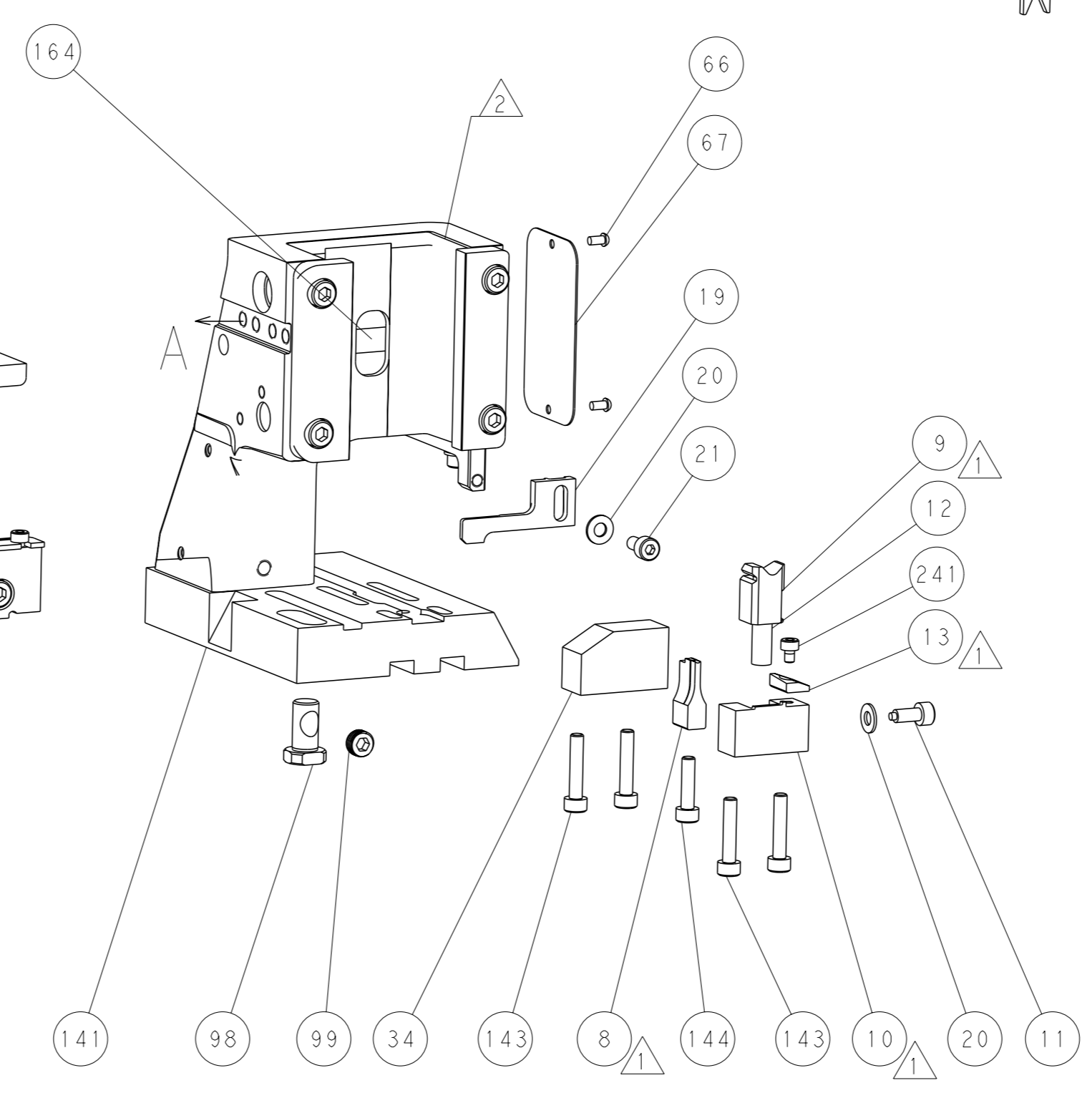
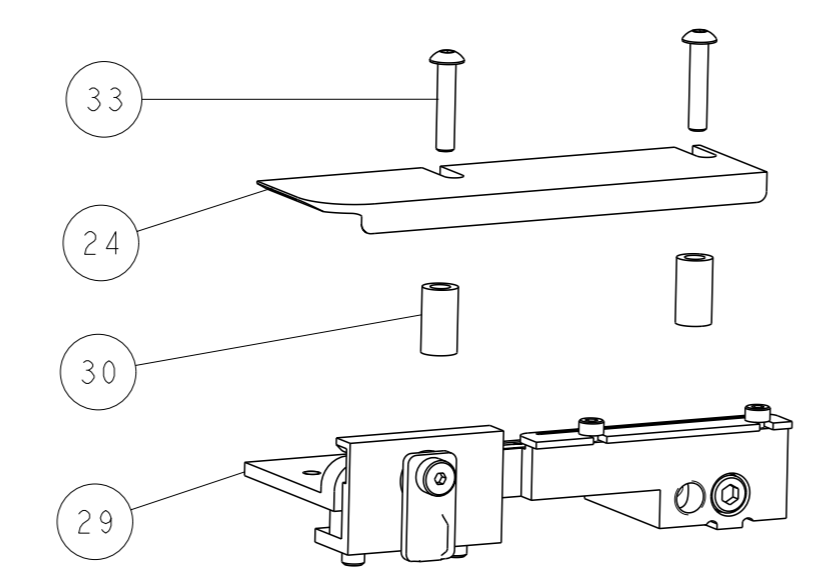
MECHANICAL POST FEED



MECHANICAL PRE FEED



AIR FEED



FEED TRACK POSITION GUIDE BY INSULATION BARREL

**PACIFIC VERSION**  
 Shown on sheets 3 of 4 & 4 of 4  
 (Atlantic version shown on sheets 1 of 4 & 2 of 4)

|  |  |  |  |
|--|--|--|--|
| <small>THIS DRAWING IS A CONTROLLED DOCUMENT FOR TYCO ELECTRONICS CORPORATION. IT IS SUBJECT TO CHANGE AND THE USER SHALL CONTACT THE DESIGNATION SHOULD BE CONTACTED FOR THE LATEST REVISION.</small> |  | OWN: R. KNEPPER 04-Oct-13<br>CHK: G. BAILEY 04-Oct-13<br>APVD: M. CLIFFORD 04-Oct-13 | NAME: TE Connectivity<br>Harrisburg, PA 17105-3608   |
| DIMENSIONS: mm<br>TOLERANCES UNLESS OTHERWISE SPECIFIED:<br>0 PLC ±<br>1 PLC ±<br>2 PLC ±<br>3 PLC ±<br>4 PLC ±<br>ANGLES FINISH ±   | APPLICATION SPEC<br>WEIGHT<br>MATERIAL | PRODUCT SPEC<br>APPLICATION SPEC<br>WEIGHT<br>MATERIAL                               | SIZE: A1<br>CAGE CODE: 00779<br>DRAWING NO: C=2266103<br>SCALE: 1:2<br>SHEET: 4 of 4<br>REV: D |