

調速電機

SPEED MOTOR

6W-250W

就是耐用！

德國技術 傳動未來

GERMAN TECHNOLOGY DRIVE IN  
THE FUTURE

## 調速電機 Speed motor 6w 60\*60mm



### ● 電機特性 Motor characteristics

#### ■ 規格 連續額定 Specifications Continuous Rated

電機型號 Motor model		出力 output W	電壓 voltage V	頻率 frequency Hz	電流 current A	起動轉矩 Starting torque mN·m	額定轉矩 Rated torque mN·m	額定轉速 Rated speed r/min	電容容量/耐壓 Capacitance/ pressure endurance $\mu$ F/AC
圓軸電機 Circular shaft motor	齒軸電機 Gear shaft motor								
2IK6RA-A	2IK6RGN-A	6	單相 110	50/60	0.24	50	45	1250/1550	2/250v
2IK6RA-C	2IK6RGN-C	6	單相 220	50/60	0.12	50	45	1250/1550	0.6/450V



middle reducer gearbox  
■ 標準減速箱  
速比: 1: 3~180

### ● 減速機特性 Motor characteristics

單位=上段: N.m/下段: kgfcm  
Unit = upper segment: N·m/lower segment: kgfcm

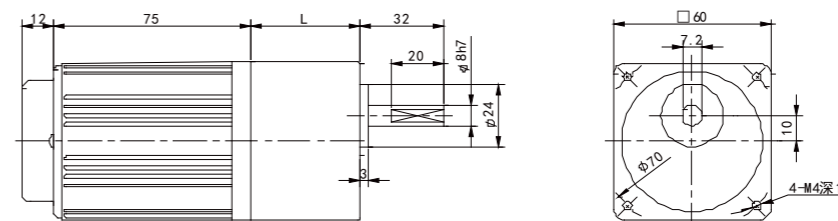
型號 Model	轉速 speed r/min	450	375	270	225	180	150	135	108	90	75	68	54	45	38	34	27	23	18	15	14	11	9	8	5
	減速比 Reduction ratio	3	3.6	5	6	7.5	9	10	15	15	18	20	25	30	36	40	40	60	75	90	100	120	150	180	250
2IK6GN-□	Kg/cm	1.30	1.50	2.10	2.60	3.20	3.90	4.30	6.40	6.40	7.70	7.70	9.70	11.60	13.90	15.50	15.50	21.00	26.20	30.00	30.00	30.00	30.00	30.00	30.00
	N.m	0.13	0.15	0.21	0.26	0.31	0.38	0.42	0.63	0.63	0.76	0.76	0.95	1.14	1.36	1.52	1.52	2.06	2.57	2.94	2.94	2.94	2.94	2.94	2.94

#### ■ 裝有減速機時的容許轉矩 Permissible Torque Equipped With Reduction

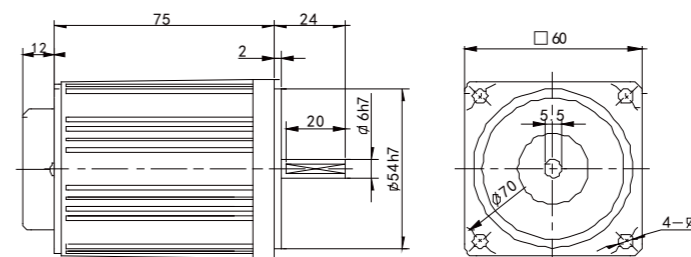
- 減速機品名的□中為減速比的數值，電動機品名的□為電機電壓類型  
The allowable torque when the gear unit is installed Reducer in the deceleration ratio of the value and the motor name for the motor voltage type.
- □色表示與電動機同一方向運轉，其它則為相反方向  
The color indicates the same direction as the motor, and the other is the opposite direction.
- 轉速是與電動機的同步轉速（50HZ: 1350r/min 60HZ:1620r/min）為基準除以減速比而算出的數值。  
The speed is calculated by dividing the speed of the motor by the speed (50HZ: 1350r / min 60HZ: 1620r / min) divided by the reduction ratio.  
實際轉速將隨負載大小變化而比所示數值減少2-20%左右  
The actual speed will vary with the load size than the value shown by the reduction of about 2-20% its desirable to install the intermediate speed reducer with a reduction ratio of 10 between the electric motor and the reducer when the speed reduction ratio is greater than the reduction ratio of the following table.
- 希望以大于下表的減速比進一步減速時，可在電動與減速機之間安裝與減速機之間安裝減速比為10的中間減速機

### 尺寸圖 Size drawing

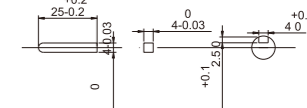
#### ■ 調速電機 Speed Regulating Motor 2IK6RGN-C+2GN□K L=40 20-180



#### ■ 圓軸電機 Circular Shaft Motor 2IK6RA-C



#### ■ 鍵 Key



# 調速電機

## Speed motor

### 15w

### 70\*70mm

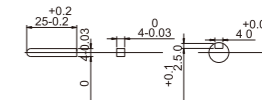
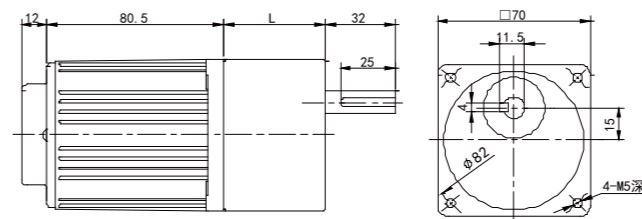


### 尺寸圖 Size drawing

#### 調速電機 Speed Regulating Motor

3IK15RGN-C+3GN□K L=35.5 3-15  
L=46.5 18-180

#### 鍵 Key



### ● 電機特性 Motor characteristics

#### ■ 規格 連續額定 Specifications Continuous Rated

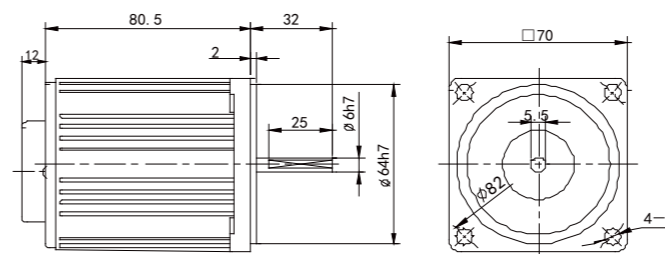
電機型號 Motor model		出力 output	電壓 voltage	頻率 frequency	電流 current	起動轉矩 Starting torque	額定轉矩 Rated torque	額定轉速 Rated speed	電容量/耐壓 Capacitance/ pressure endurance
圓軸電機 Circular shaft motor	齒軸電機 Gear shaft motor	W	V	Hz	A	mN·m	mN·m	r/min	μF/AC
3IK15RA-A	3IK15RGN-A	15	單相110	50/60	0.36	95	118	1250/1550	5/250V
3IK15RA-C	3IK15RGN-C	15	單相220	50/60	0.16	95	118	1250/1550	1.2/450V



middle reducer gearbox  
■ 標準減速箱  
速比: 1: 3~180

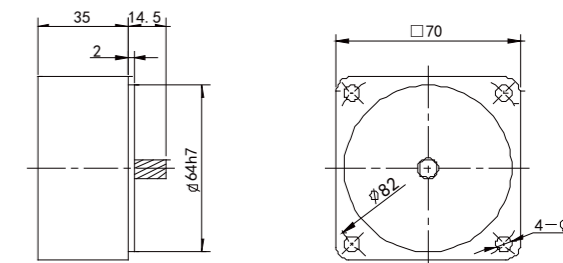
#### 圓軸電機 Circular Shaft Motor

3IK15RA-C



#### 中間減速機 Intermediate Speed Reducer

3GN10K



### ● 減速機特性 Motor characteristics

單位=上段: N.m/下段: kgfcm  
Unit = upper segment: N·m/lower segment: kgfcm

型號 Model	轉速 speed r/min	450	375	270	225	180	150	135	108	90	75	68	54	45	38	34	27	23	18	15	14	11	9	8	5
	減速比 Reduction ratio	3	3.6	5	6	7.5	9	10	12.5	15	18	20	25	30	36	40	40	60	75	90	100	120	150	180	250
3IK15GN-□	Kg/cm	3.20	3.90	5.40	6.50	8.10	9.70	10.80	13.50	16.20	19.40	19.40	24.20	29.10	34.90	38.80	43.60	50.00	50.00	50.00	50.00	50.00	50.00	50.00	50.00
	N.m	0.31	0.38	0.53	0.64	0.79	0.95	1.06	1.32	1.59	1.90	1.90	2.37	2.85	3.42	3.81	4.28	4.90	4.90	4.90	4.90	4.90	4.90	4.90	4.90

#### ■ 裝有減速機時的容許轉矩 Permissible Torque Equipped With Reduction

- 減速機品名的□中為減速比的數值，電動機品名的□為電機電壓類型  
The allowable torque when the gear unit is installed Reducer in the deceleration ratio of the value and the motor name for the motor voltage type.
- 色表示與電動機同一方向運轉，其它則為相反方向  
The color indicates the same direction as the motor, and the other is the opposite direction.
- 轉速是與電動機的同步轉速 (50HZ: 1350r/min 60HZ:1620r/min) 為基準除以減速比而算出的數值。  
The speed is calculated by dividing the speed of the motor by the speed (50HZ: 1350r / min 60HZ: 1620r / min) divided by the reduction ratio.  
實際轉速將隨負載大小變化而比所示數值減少2-20%左右  
The actual speed will vary with the load size than the value shown by the reduction of about 2-20% its desirable to install the intermediate speed reducer with a reduction ratio of 10 between the electric motor and the reducer when the speed reduction ratio is greater than the reduction ratio of the following table.
- 希望以大于下表的減速比進一步減速時，可在電動與減速機之間安裝與減速機之間安裝減速比為10的中間減速機

定速電機

調速電機

定速電磁制動電機

調速電磁制動電機

中型齒輪減速電機

行星減速機

鋁合金刀減速機

## 調速電機 Speed motor 25w 80\*80mm



### ● 電機特性 Motor characteristics

#### ■ 規格 連續額定 Specifications Continuous Rated

電機型號 Motor model		出力 output	電壓 voltage	頻率 frequency	電流 current	起動轉矩 Starting torque	額定轉矩 Rated torque	額定轉速 Rated speed	電容量/耐壓 Capacitance/ pressure endurance
圓軸電機 Circular shaft motor	齒軸電機 Gear shaft motor	W	V	Hz	A	mN·m	mN·m	r/min	μF/AC
4IK25RA-A	4IK25RGN-A	25	單相 110	50/60	0.52	150	205	1300/1600	6/250V
4IK25RA-C	4IK25RGN-C	25	單相 220	50/60	0.25	150	205	1300/1600	1.5/450V



middle reducer gearbox  
■ 標準減速箱  
速比: 1: 3~180



middle real axis  
■ 直角中實減速箱  
速比: 1: 10~180



quill shaft  
■ 直角中空減速箱  
速比: 1: 10~180

### ● 減速機特性 Motor characteristics

單位=上段: N.m/下段: kgfcm  
Unit = upper segment: N·m/lower segment: kgfcm

型號 Model	轉速 speed r/min	450	375	270	225	180	150	135	108	90	75	68	54	45	38	34	27	23	18	15	14	11	9	8	5
	減速比 Reduction ratio	3	3.6	5	6	7.5	9	10	12.5	15	18	20	25	30	36	40	50	60	75	90	100	120	150	180	250
4IK25GN-□	Kg/cm	3.40	4.10	5.70	6.80	8.50	10.20	11.30	14.20	17.00	20.40	25.60	30.70	36.80	40.90	46.20	55.40	69.20	80.00	80.00	80.00	80.00	80.00	80.00	
	N.m	0.33	0.40	0.56	0.67	0.83	1.00	1.11	1.39	1.67	2.00	2.00	2.51	3.01	3.61	4.01	4.53	5.43	6.79	7.84	7.84	7.84	7.84	7.84	

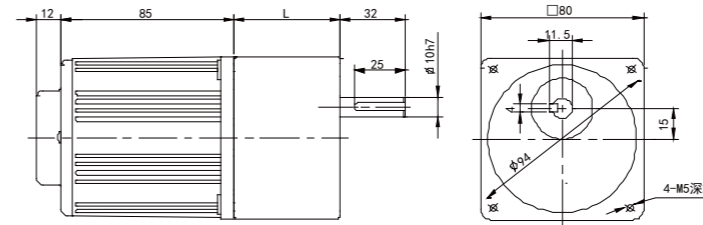
### ■ 裝有減速機時的容許轉矩 Permissible Torque Equipped With Reduction

- 減速機品名的□中為減速比的數值，電動機品名的□為電機電壓類型。  
The allowable torque when the gear unit is installed Reducer in the deceleration ratio of the value and the motor name for the motor voltage type.
- 色表示與電動機同一方向運轉，其它則為相反方向。  
The color indicates the same direction as the motor, and the other is the opposite direction.
- 轉速是與電動機的同步轉速 (50HZ: 1350r/min 60HZ:1620r/min) 為基準除以減速比而算出的數值。  
The speed is calculated by dividing the speed of the motor by the speed (50HZ: 1350r / min 60HZ: 1620r / min) divided by the reduction ratio.  
實際轉速將隨負載大小變化而比所示數值減少2~20%左右  
The actual speed will vary with the load size than the value shown by the reduction of about 2-20% its desirable to install the intermediate speed reducer with a reduction ratio of 10 between the electric motor and the reducer when the speed reduction ratio is greater than the reduction ratio of the following table.
- 希望以大于下表的減速比進一步減速時，可在電動與減速機之間安裝與減速機之間安裝減速比為10的中間減速機

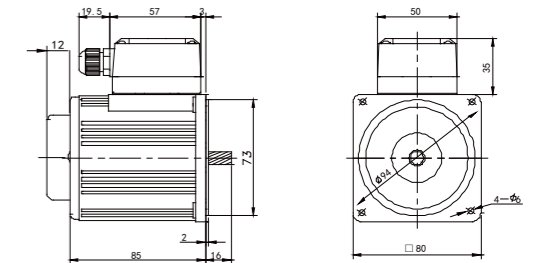
### 尺寸圖 Size drawing

#### ■ 調速電機 Speed Regulating Motor 4IK25RGN-C+4GN□K

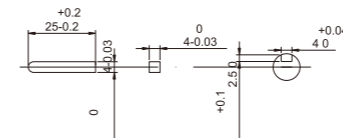
L=38.5 3-18  
L=52 20-180



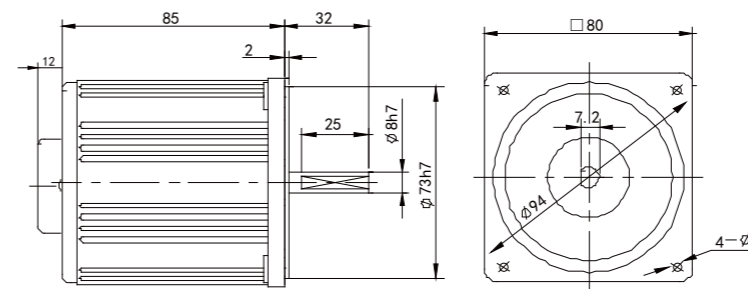
#### ■ 齒軸帶接線盒 Motor With Terminal Box 4IK25RGN-CT



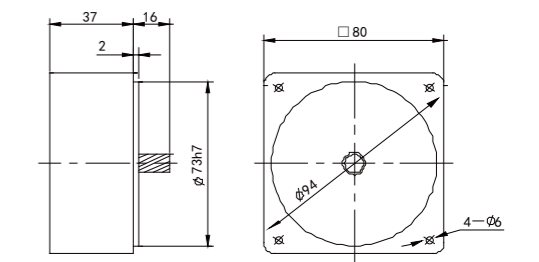
#### ■ 鍵 Key



#### ■ 圓軸電機 Circular Shaft Motor 4IK25RA-C

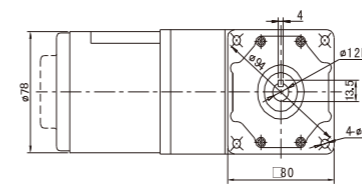


#### ■ 中間減速機 Intermediate Speed Reducer 4GN10K



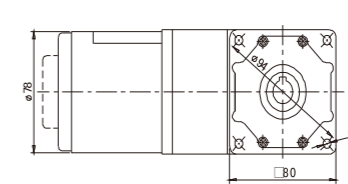
#### 電機+中實軸

Electrical machinery+middle real axis



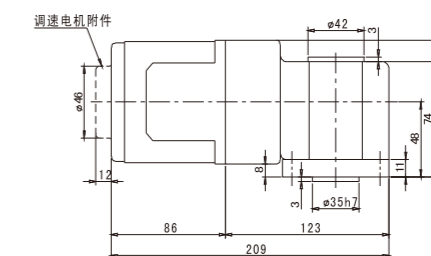
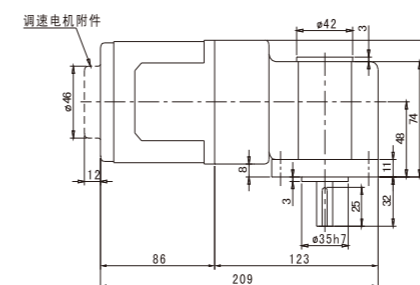
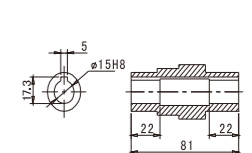
#### 電機+中空軸

Electrical machinery+quill shaft



#### 中空軸

Quill shaft



## 調速電機 Speed motor 40w 90\*90mm



### ● 電機特性 Motor characteristics

■ 規格 連續額定 Specifications Continuous Rated ■ 規格 30分鐘額定 Provisions For 30 Minutes Rated

電機型號 Motor model		出力 output	電壓 voltage	頻率 frequency	電流 current	起動轉矩 Starting torque	額定轉矩 Rated torque	額定轉速 Rated speed	電容量/耐壓 Capacitance/ pressure endurance
圓軸電機 Circular shaft motor	齒軸電機 Gear shaft motor	W	V	Hz	A	mN·m	mN·m	r/min	μF/AC
5IK40RA-A	5IK40RGN-A	40	單相 110	50/60	0.65	270	300	1300/1600	10/250v
5IK40RA-C	5IK40RGN-C	40	單相 220	50/60	0.33	270	300	1300/1600	2.5/450v
5RK40RA-A	5RK40RGN-A	40	單相 110	50/60	0.65	270	300	1300/1600	12/250v
5RK40RA-C	5RK40RGN-C	40	單相 220	50/60	0.33	270	300	1300/1600	3.0/450v



### ● 減速機特性 Motor characteristics

單位=上段: N.m/下段: kgfcm  
Unit = upper segment: N·m/lower segment: kgfcm

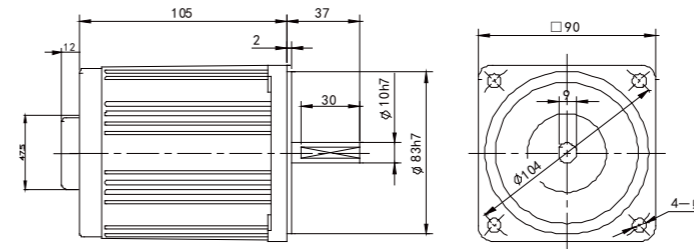
型號 Model	轉速 speed r/min 減速比 Reduction ratio	轉速 speed r/min																							
		450	375	270	225	180	150	135	108	90	75	68	54	45	38	34	27	23	18	15	14	11	9	8	5
5IK40GN-□	Kg/cm	8.30	9.90	13.80	16.50	20.70	24.80	27.50	34.40	41.30	49.60	62.10	74.50	89.40	99.30	100.00	100.00	100.00	100.00	100.00	100.00	100.00	100.00	100.00	100.00
	N.m	0.81	0.97	1.35	1.62	2.03	2.43	2.70	3.37	4.05	4.86	4.86	6.09	7.30	8.76	9.73	9.80	9.80	9.80	9.80	9.80	9.80	9.80	9.80	9.80

### ■ 裝有減速機時的容許轉矩 Permissible Torque Equipped With Reduction

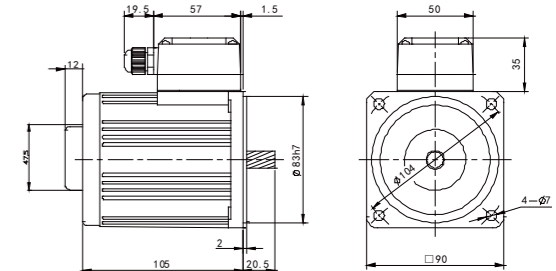
- 減速機品名的□中為減速比的數值，電動機品名的□為電機電壓類型  
The allowable torque when the gear unit is installed Reducer in the deceleration ratio of the value and the motor name for the motor voltage type.
- 色表示與電動機同一方向運轉，其它則為相反方向  
The color indicates the same direction as the motor, and the other is the opposite direction.
- 轉速是與電動機的同步轉速 (50HZ: 1350r/min 60HZ:1620r/min) 為基準除以減速比而算出的數值。  
The speed is calculated by dividing the speed of the motor by the speed (50HZ: 1350r / min 60HZ: 1620r / min) divided by the reduction ratio.  
實際轉速將隨負載大小變化而比所示數值減少2-20%左右  
The actual speed will vary with the load size than the value shown by the reduction of about 2-20% its desirable to install the intermediate speed reducer with a reduction ratio of 10 between the electric motor and the reducer when the speed reduction ratio is greater than the reduction ratio of the following table.
- 希望以大于下表的減速比進一步減速時，可在電動與減速機之間安裝與減速機之間安裝減速比為10的中間減速機  
speed reducer with a reduction ratio of 10 between the electric motor and the reducer when the speed reduction ratio is greater than the reduction ratio of the following table.

### 尺寸圖 Size drawing

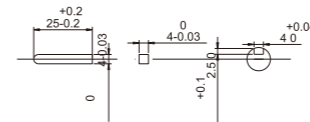
#### ■ 圓軸電機 Circular Shaft Motor 5IK40RA-C



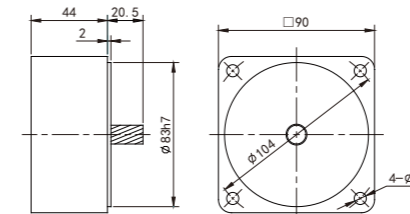
#### ■ 齒軸帶接線盒 Motor With Terminal Box 5IK40RGN-CT



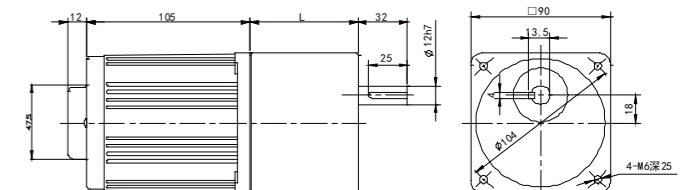
#### ■ 鍵 Key



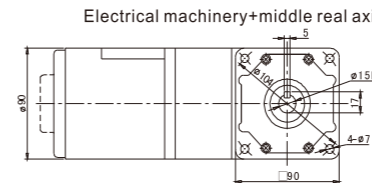
#### ■ 中間減速機 Intermediate Speed Reducer 5GN10K



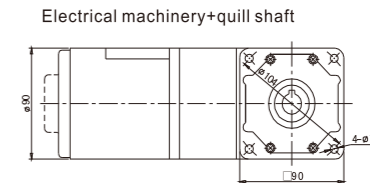
#### ■ 調速電機 Speed Regulating Motor 5IK40RGN-C+5GN□K L=47.3 3-15 L=69.3 18-180



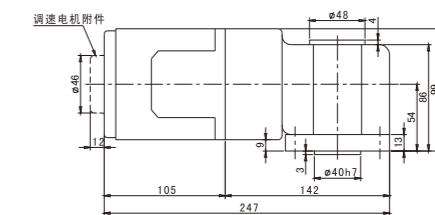
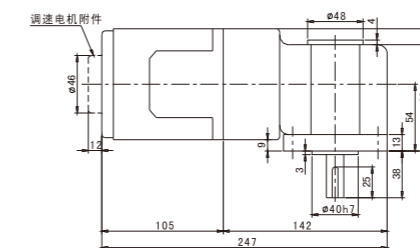
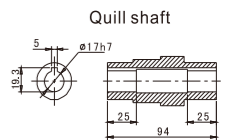
#### 電機+中實軸 Electrical machinery+middle real axis



#### 電機+中空軸 Electrical machinery+quill shaft



#### 中空軸 Quill shaft



# 調速電機

## Speed motor

### 60w

### 90\*90mm



## ● 電機特性 Motor characteristics

■ 規格 連續額定 Specifications Continuous Rated ■ 規格 30分鐘額定 Provisions For 30 Minutes Rated

電機型號 Motor model		輸出 output W	電壓 voltage V	頻率 frequency Hz	電流 current A	起動轉矩 Starting torque mN·m	額定轉矩 Rated torque mN·m	額定轉速 Rated speed r/min	電容量/耐壓 Capacitance/pressure endurance μF/AC
圓軸電機 Circular shaft motor	齒軸電機 Gear shaft motor								
5IK60RA-AF	5IK60RGU-AF	60	單相110	50/60	0.90	397	450	1300/1600	14/250V
5IK40RA-CF	5IK60RGU-CF	60	單相220	50/60	0.52	397	450	1300/1600	3.5/450V
5RK60RA-AF	5RK60RGU-AF	60	單相110	50/60	0.90	397	450	1300/1600	12/250V
5RK60RA-CF	5RK60RGU-CF	60	單相220	50/60	0.52	397	450	1300/1600	3.0/450V



middle reducer gearbox  
■ 標準減速箱  
速比: 1: 3~180



middle real axis  
■ 直角中空減速箱  
速比: 1: 10~180



quill shaft  
■ 直角中空減速箱  
速比: 1: 10~180

## ● 減速機特性 Motor characteristics

單位=上段: N.m/下段: kgfcm  
Unit = upper segment: N · m/lower segment: kgfcm

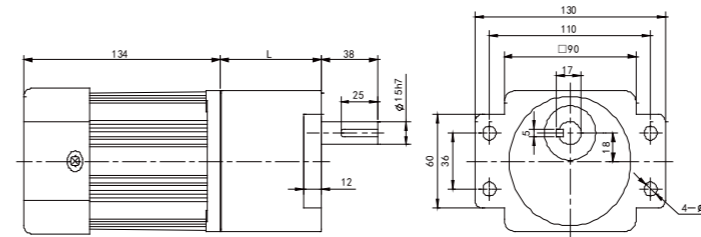
型號 Model	轉速 speed r/min	減速比 Reduction ratio																							
		3	3.6	5	6	7.5	9	10	12.5	15	18	20	25	30	36	40	50	60	75	90	100	120	150	180	250
5IK60GN-□	Kg/cm	12.20	14.60	20.30	24.30	30.40	36.50	40.50	45.60	54.80	65.70	73.00	82.50	99.00	119.00	132.00	165.00	198.00	200.00	200.00	200.00	200.00	200.00	200.00	200.00
	N.m	1.20	1.43	1.99	2.38	2.99	3.58	3.97	4.47	5.37	6.44	7.15	8.09	9.70	11.66	12.94	16.17	19.40	19.60	19.60	19.60	19.60	19.60	19.60	19.60

## ■ 裝有減速機時的容許轉矩 Permissible Torque Equipped With Reduction

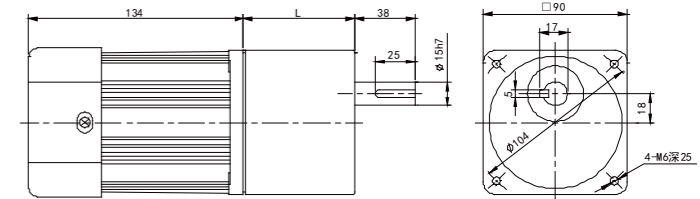
- 減速機品名的□中為減速比的數值，電動機品名的□為電機電壓類型  
The allowable torque when the gear unit is installed Reducer in the deceleration ratio of the value and the motor name for the motor voltage type.
- 色表示與電動機同一方向運轉，其它則為相反方向  
The color indicates the same direction as the motor, and the other is the opposite direction.
- 轉速是與電動機的同步轉速 (50HZ: 1350r/min 60HZ:1620r/min) 為基準除以減速比而算出的數值。  
The speed is calculated by dividing the speed of the motor by the speed (50HZ: 1350r / min 60HZ: 1620r / min) divided by the reduction ratio.  
實際轉速將隨負載大小變化而比所示數值減少2~20%左右  
The actual speed will vary with the load size than the value shown by the reduction of about 2-20% its desirable to install the intermediate speed reducer with a reduction ratio of 10 between the electric motor and the reducer when the speed reduction ratio is greater than the reduction ratio of the following table.
- 希望以大于下表的減速比進一步減速時，可在電動與減速機之間安裝與減速機之間安裝減速比為10的中間減速機

## 尺寸圖 Size drawing

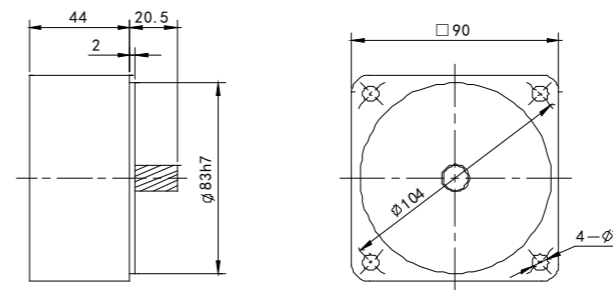
■ 調速電機 Constant Speed (control) Machine  
5IK60RGU-CF+5GU□K L=47.3 3-15  
L=69.3 18-180



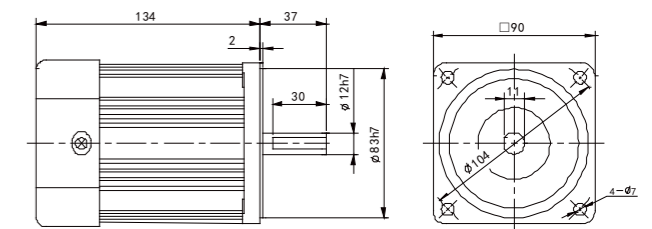
■ 調速電機 Constant Speed (control) Machine  
5IK60RGU-CF+5GU□KB L=47.3 3-15  
L=69.3 18-180



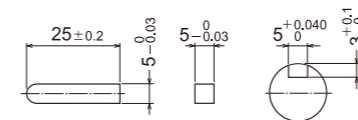
■ 中間減速機 Intermediate Speed Reducer  
5GN10K (60W.90W.120W共用)



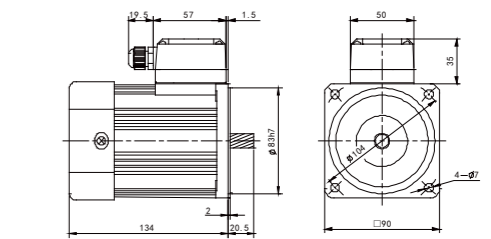
■ 圓軸電機 Circular Shaft Motor  
5IK60RA-CF



■ 鍵 Key (60W.90W.120W.140W.160W.180W.200W.250W共用)

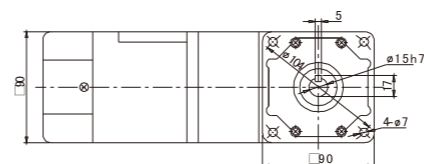


■ 齒軸帶接線盒 Motor With Terminal Box  
5IK60RGU-CFT



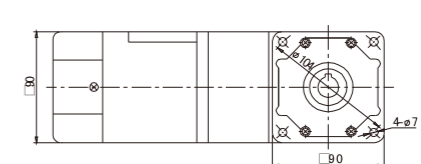
## 電機+中實軸

Electrical machinery+middle real axis



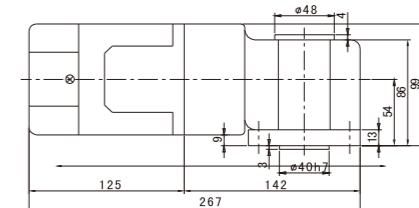
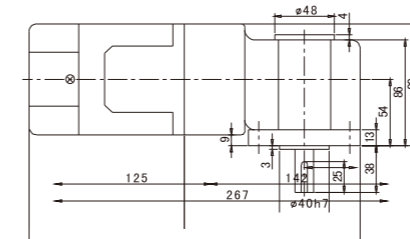
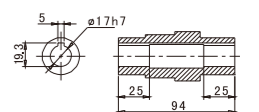
## 電機+中空軸

Electrical machinery+quill shaft



## 中空軸

Quill shaft



定速電機

調速電機

定速電磁制動電機

調速電磁制動電機

中型齒輪減速電機

行星減速機

鋁合金刀減速機

# 調速電機

## Speed motor

### 90w

### 90\*90mm



### ●電機特性 Motor characteristics

■ 規格 連續額定 Specifications Continuous Rated ■ 規格 30分鐘額定 Provisions For 30 Minutes Rated

電機型號 Motor model		出力 output W	電壓 voltage V	頻率 frequency Hz	電流 current A	起動轉矩 Starting torque mN·m	額定轉矩 Rated torque mN·m	額定轉速 Rated speed r/min	電容量/耐壓 Capacitance/pressure endurance μF/AC
圓軸電機 Circular shaft motor	齒軸電機 Gear shaft motor								
5IK90RA-AF	5IK90RGU-AF	90	單相110	50/60	1.2	580	670	1300/1600	20/250V
5IK90RA-CF	5IK90RGU-CF	90	單相220	50/60	0.5	580	670	1300/1600	5.0/450V
5RK90RA-AF	5RK90RGU-AF	90	單相110	50/60	1.2	580	670	1300/1600	24/250V
5RK90RA-CF	5RK90RGU-CF	90	單相220	50/60	0.58	580	670	1300/1600	6.0/450V



middle reducer gearbox  
■ 標準減速箱  
速比: 1: 3~180



middle real axis  
■ 直角中實減速箱  
速比: 1: 10~180



quill shaft  
■ 直角中空減速箱  
速比: 1: 10~180

### ●減速機特性 Motor characteristics

單位=上段: N.m/下段: kgfcm  
Unit = upper segment: N · m/lower segment: kgfcm

型號 Model	轉速 speed r/min	450	375	270	225	180	150	135	108	90	75	68	54	45	38	34	27	23	18	15	14	11	9	8	5
	減速比 Reduction ratio	3	3.6	5	6	7.5	9	10	12.5	15	18	20	25	30	36	40	50	60	75	90	100	120	150	180	250
5IK90GN-□	Kg/cm	15.82	18.98	26.33	31.63	39.49	47.35	52.35	59.29	71.22	85.41	94.90	107.14	128.57	154.08	200.00	200.00	200.00	200.00	200.00	200.00	200.00	200.00	200.00	200.00
	N.m	1.55	1.86	2.58	3.1	3.87	4.64	5.13	5.81	6.98	8.37	9.3	10.5	12.6	15.1	19.6	19.6	19.6	19.6	19.6	19.6	19.6	19.6	19.6	19.6

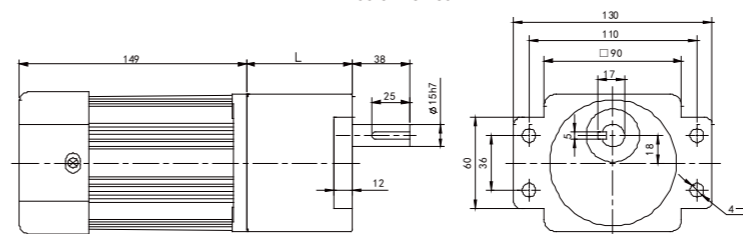
### ■ 裝有減速機時的容許轉矩 Permissible Torque Equipped With Reduction

- 減速機品名的□中為減速比的數值，電動機品名的□為電機電壓類型  
The allowable torque when the gear unit is installed Reducer in the deceleration ratio of the value and the motor name for the motor voltage type.
- □色表示與電動機同一方向運轉，其它則為相反方向  
The color indicates the same direction as the motor, and the other is the opposite direction.
- 轉速是與電動機的同步轉速（50HZ: 1350r/min 60HZ:1620r/min）為基準除以減速比而算出的數值。  
The speed is calculated by dividing the speed of the motor by the speed (50HZ: 1350r / min 60HZ: 1620r / min) divided by the reduction ratio.  
實際轉速將隨負載大小變化而比所示數值減少2~20%左右  
The actual speed will vary with the load size than the value shown by the reduction of about 2-20% its desirable to install the intermediate speed reducer with a reduction ratio of 10 between the electric motor and the reducer when the speed reduction ratio is greater than the reduction ratio of the following table.
- 希望以大于下表的減速比進一步減速時，可在電動與減速機之間安裝與減速機之間安裝減速比為10的中間減速機

### 尺寸圖 Size drawing

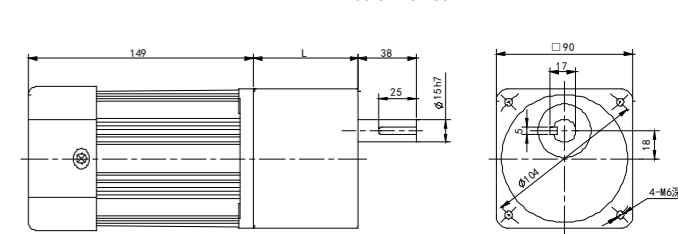
#### ■ 調速電機 Constant Speed (control) Machine

5IK90RGU-CF+5GU□K L=47.3 3-15  
L=69.3 18-180



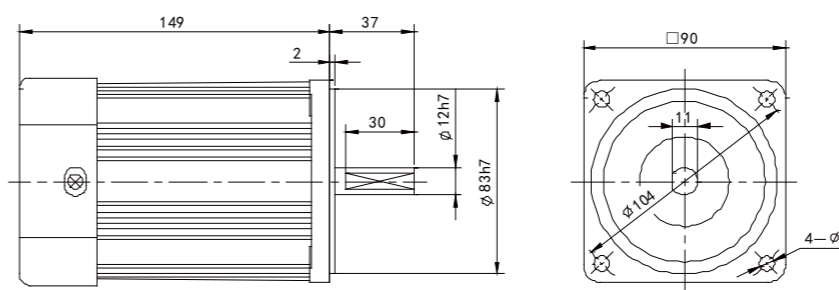
#### ■ 調速電機 Constant Speed (control) Machine

5IK90RGU-CF+5GU□KB L=47.3 3-15  
L=69.3 18-180



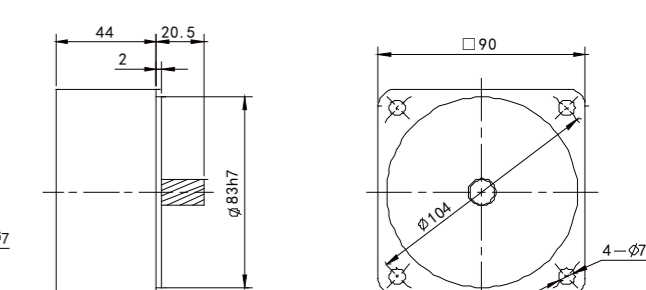
#### ■ 圓軸電機 Circular Shaft Motor

5IK90RA-CF

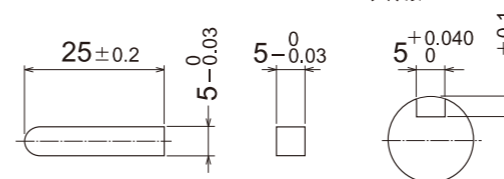


#### ■ 中間減速機 Intermediate Speed Reducer

5GN10K (60W.90W.120W共用)

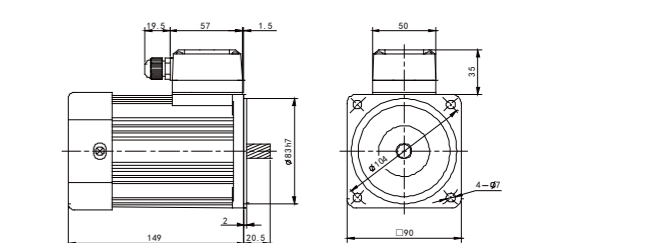


#### ■ 鍵 Key (60W.90W.120W.140W.160W.180W.200W.250W共用)



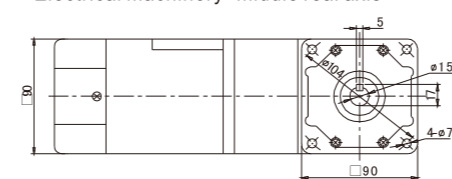
#### ■ 齒軸帶接線盒 Motor With Terminal Box

5IK90RGU-CFT



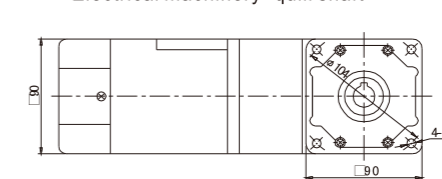
#### 電機+中實軸

Electrical machinery+middle real axis



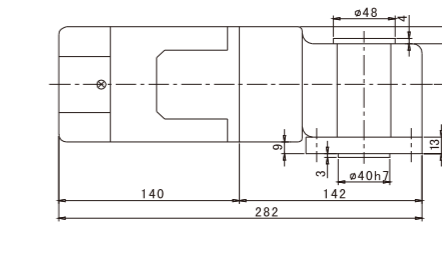
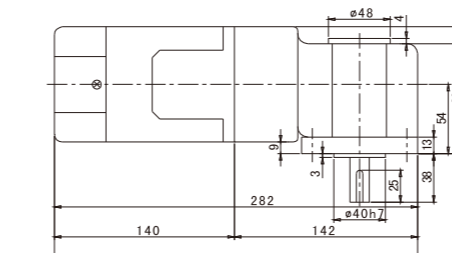
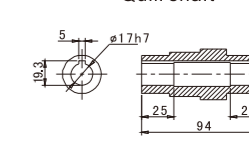
#### 電機+中空軸

Electrical machinery+quill shaft



#### 中空軸

Quill shaft



定速電機

調速電機

定速電磁制動電機

調速電磁制動電機

中型齒輪減速電機

行星減速機

鋁合金刀減速機

# 調速電機 Speed motor 120w 90\*90mm



## ●電機特性 Motor characteristics

■ 規格 連續額定 Specifications Continuous Rated ■ 規格 30分鐘額定 Provisions For 30 Minutes Rated

電機型號 Motor model		出力 output W	電壓 voltage V	頻率 frequency Hz	電流 current A	起動轉矩 Starting torque mN·m	額定轉矩 Rated torque mN·m	額定轉速 Rated speed r/min	電容量/耐壓 Capacitance/ pressure endurance μF/AC
圓軸電機 Circular shaft motor	齒軸電機 Gear shaft motor								
5IK120RA-AF	5IK120RGU-AF	120	單相110	50/60	1.68	650	800	1300/1600	24/250v
5IK120RA-CF	5IK120RGU-CF	120	單相220	50/60	0.81	650	800	1300/1600	6.0/450v
5RK120RA-AF	5RK120RGU-AF	120	單相110	50/60	1.80	720	890	1300/1600	30/250v
5RK120RA-CF	5RK120RGU-CF	120	單相220	50/60	0.95	720	890	1300/1600	8.0/450v



middle reducer gearbox  
■ 標準減速箱  
速比: 1: 3~180



middle real axis  
■ 直角中實減速箱  
速比: 1: 10~180



quill shaft  
■ 直角中空減速箱  
速比: 1: 10~180

## ●減速機特性 Motor characteristics

◇ 50Hz

型號 Model	轉速 speed r/min	450	375	270	225	180	150	135	108	90	75	68	54	45	38	34	27	23	18	15	14	11	9	8	5
	減速比 Reduction ratio	3	3.6	5	6	7.5	9	10	12.5	15	18	20	25	30	36	40	50	60	75	90	100	120	150	180	250
5IK120GN-□	Kg/cm	23.20	27.80	38.70	46.40	58.00	69.60	77.40	87.00	104.00	125.00	139.00	156.00	188.00	200.00	200.00	200.00	200.00	200.00	200.00	200.00	200.00	200.00	200.00	200.00
	N.m	2.28	2.73	3.79	4.55	5.69	6.83	7.59	8.53	10.24	12.29	13.65	15.36	18.43	19.61	19.61	19.61	19.61	19.61	19.61	19.61	19.61	19.61	19.61	19.61

單位=上段: N.m/下段: kgfcm  
Unit = upper segment: N · m / lower segment: kgfcm

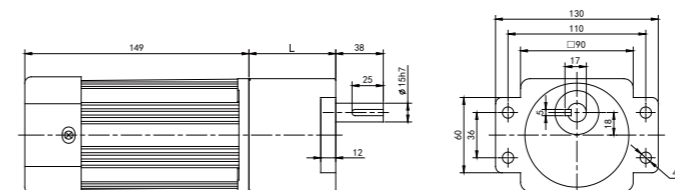
## ■裝有減速機時的容許轉矩 Permissible Torque Equipped With Reduction

- 減速機品名的□中為減速比的數值，電動機品名的□為電機電壓類型  
The allowable torque when the gear unit is installed Reducer in the deceleration ratio of the value and the motor name for the motor voltage type.
- □色表示與電動機同一方向運轉，其它則為相反方向  
The color indicates the same direction as the motor, and the other is the opposite direction.
- 轉速是與電動機的同步轉速 (50HZ: 1350r/min 60HZ:1620r/min) 為基準除以減速比而算出的數值。  
The speed is calculated by dividing the speed of the motor by the speed (50HZ: 1350r / min 60HZ: 1620r / min) divided by the reduction ratio.  
實際轉速將隨負載大小變化而比所示數值減少2~20%左右  
The actual speed will vary with the load size than the value shown by the reduction of about 2~20% its desirable to install the intermediate speed reducer with a reduction ratio of 10 between the electric motor and the reducer when the speed reduction ratio is greater than the reduction ratio of the following table.
- 希望以大于下表的減速比進一步減速時，可在電動與減速機之間安裝與減速機之間安裝減速比為10的中間減速機

## 尺寸圖 Size drawing

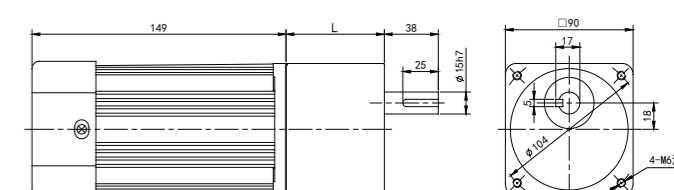
### ■調速電機 Constant Speed (control) Machine

5IK120RGU-CF+5GU□K L=47.3 3-15  
L=69.3 18-180



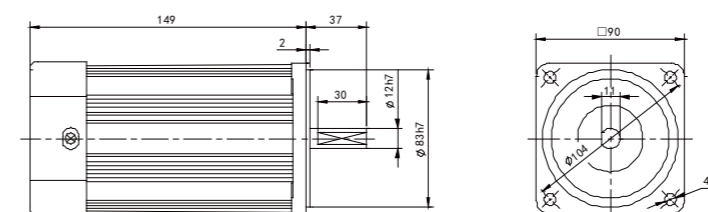
### ■調速電機 Constant Speed (control) Machine

5IK120RGU-CF+5GU□KB L=47.3 3-15  
L=69.3 18-180



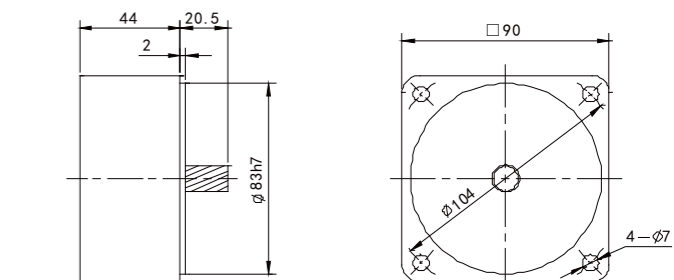
### ■圓軸電機 Circular Shaft Motor

5IK120RA-CF

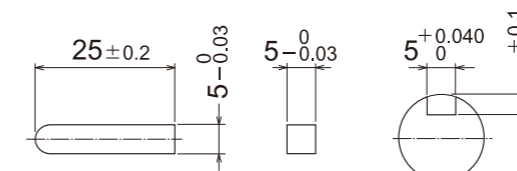


### ■中間減速機 Intermediate Speed Reducer

5GN10K (60W.90W.120W共用)

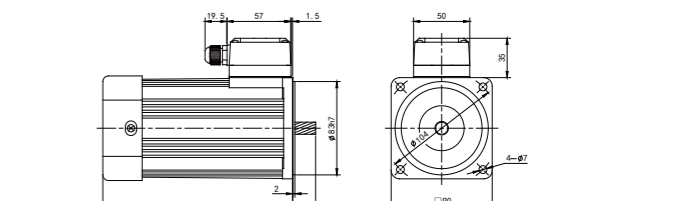


### ■鍵 Key (60W.90W.120W.140W.160W.180W.200W.250W共用)



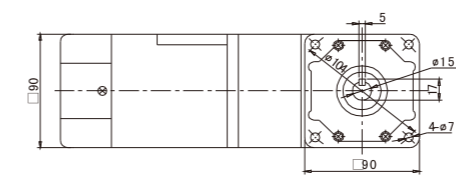
### ■齒軸帶接線盒 Motor With Terminal Box

5IK120RGU-CFT



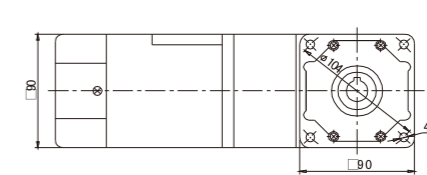
### 電機+中實軸

Electrical machinery+middle real axis



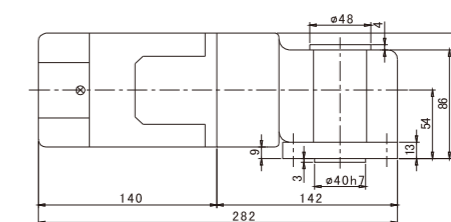
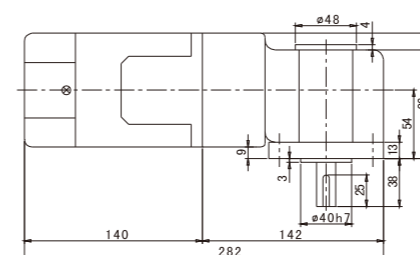
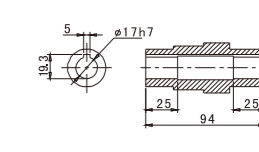
### 電機+中空軸

Electrical machinery+quill shaft



### 中空軸

Quill shaft





# 調速電機

## Speed motor

### 140w

### 90\*90mm



### ● 電機特性 Motor characteristics

■ 規格 連續額定 Specifications Continuous Rated ■ 規格 30分鐘額定 Provisions For 30 Minutes Rated

電機型號 Motor model		出力 output W	電壓 voltage V	頻率 frequency Hz	電流 current A	起動轉矩 Starting torque mN·m	額定轉矩 Rated torque mN·m	額定轉速 Rated speed r/min	電容量/耐壓 Capacitance/ pressure endurance μF/AC
圓軸電機 Circular shaft motor	齒軸電機 Gear shaft motor								
5IK140RA-AF	5IK140RGU-AF	140	單相110	50/60	2.35	900	1000	1350/1650	30/250V
5IK140RA-CF	5IK140RGU-CF	140	單相220	50/60	2.35	900	1000	1350/1650	7.0/450V
5RK140RA-AF	5RK140RGU-AF	140	單相110	50/60	2.1	945	990	1350/1650	32/250
5RK140RA-CF	5RK140RGU-CF	140	單相220	50/60	1.2	945	990	1350/1650	9.0/450



middle reducer gearbox  
■ 標準減速箱  
速比: 1: 3~180



middle real axis  
■ 直角中實減速箱  
速比: 1: 10~180



quill shaft  
■ 直角中空減速箱  
速比: 1: 10~180

### ● 減速機特性 Motor characteristics

◇ 50Hz

單位=上段: N.m/下段: kgfcm  
Unit = upper segment: N·m/lower segment: kgfcm

型號 Model	轉速 speed r/min 減速比 Reduction ratio	轉速 speed r/min																							
		450	375	270	225	180	150	135	108	90	75	68	54	45	38	34	27	23	18	15	14	11	9	8	5
5IK140GN-□	Kg/cm	24.50	29.10	40.00	47.70	59.30	70.90	78.70	88.30	105.30	126.30	140.30	157.30	189.30	200.00	200.00	200.00	200.00	200.00	200.00	200.00	200.00	200.00	200.00	200.00
	N.m	2.41	2.286	3.92	4.68	5.82	6.96	7.72	8.66	10.37	12.42	13.78	15.49	18.56	19.74	19.74	19.74	19.74	19.74	19.74	19.74	19.74	19.74	19.74	19.74

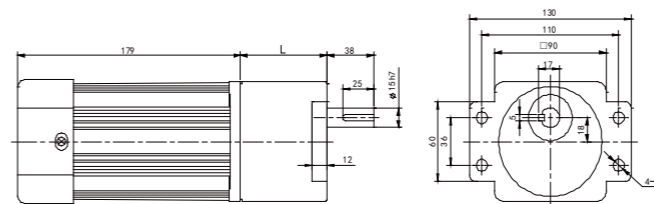
### ■ 裝有減速機時的容許轉矩 Permissible Torque Equipped With Reduction

- 減速機品名的□中為減速比的數值，電動機品名的□為電機電壓類型  
The allowable torque when the gear unit is installed Reducer in the deceleration ratio of the value and the motor name for the motor voltage type.
- 色表示與電動機同一方向運轉，其它則為相反方向  
The color indicates the same direction as the motor, and the other is the opposite direction.
- 轉速是與電動機的同步轉速（50HZ: 1350r/min 60HZ:1620r/min）為基準除以減速比而算出的數值。  
The speed is calculated by dividing the speed of the motor by the speed (50HZ: 1350r / min 60HZ: 1620r / min) divided by the reduction ratio.  
實際轉速將隨負載大小變化而比所示數值減少2~20%左右  
The actual speed will vary with the load size than the value shown by the reduction of about 2~20% its desirable to install the intermediate speed reducer with a reduction ratio of 10 between the electric motor and the reducer when the speed reduction ratio is greater than the reduction ratio of the following table.
- 希望以大于下表的減速比進一步減速時，可在電動與減速機之間安裝與減速機之間安裝減速比為10的中間減速機

### 尺寸圖 Size drawing

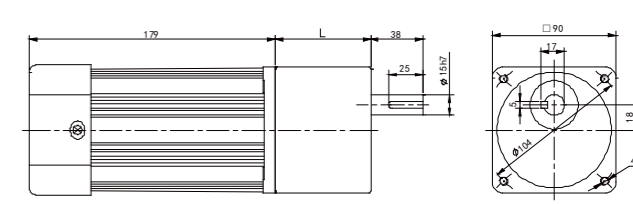
#### ■ 調速電機 Constant Speed (control) Machine

5IK140RGU-CF+5GU□K L=47.3 3-15  
L=69.3 18-180



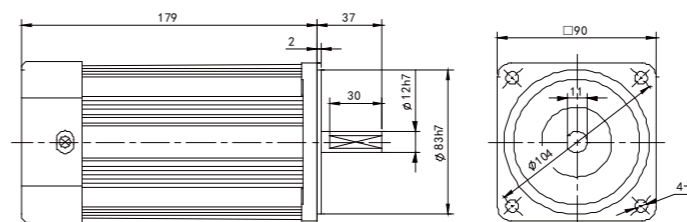
#### ■ 調速電機 Constant Speed (control) Machine

5IK140RGU-CF+5GU□KB L=47.3 3-15  
L=69.3 18-180

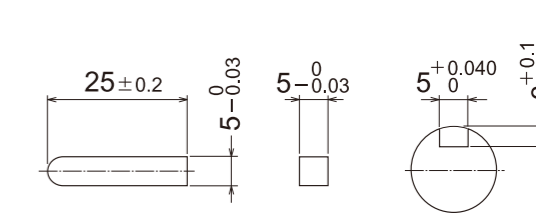


#### ■ 圓軸電機 Circular Shaft Motor

5IK140RA-CF

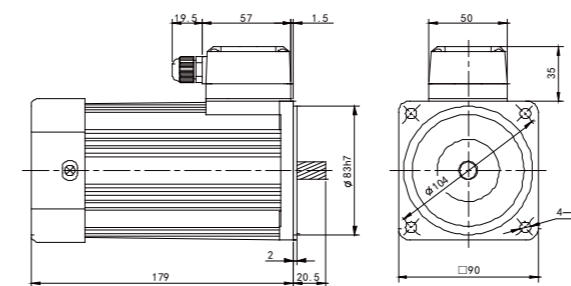


#### ■ 鍵 Key (60W.90W.120W.140W.160W.180W.200W.250W共用)



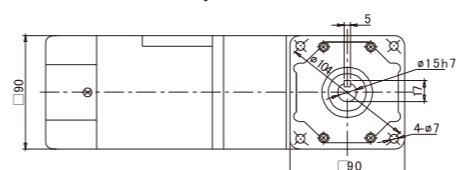
#### ■ 齒軸帶接線盒 Motor With Terminal Box

5IK140RGU-CFT



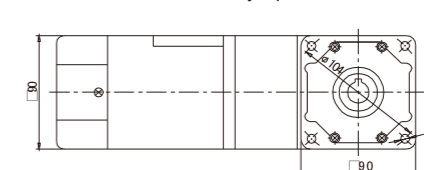
#### 電機+中實軸

Electrical machinery+middle real axis



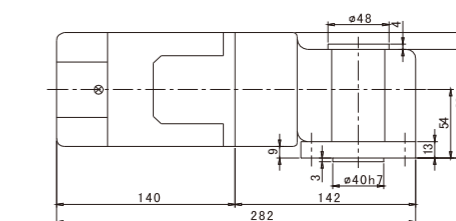
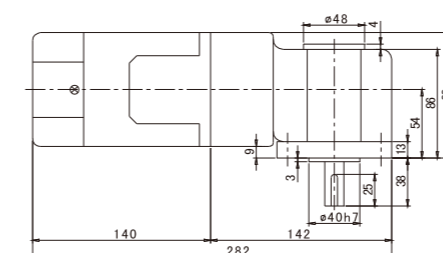
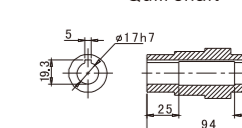
#### 電機+中空軸

Electrical machinery+quill shaft



#### 中空軸

Quill shaft



# 調速電機

## Speed motor

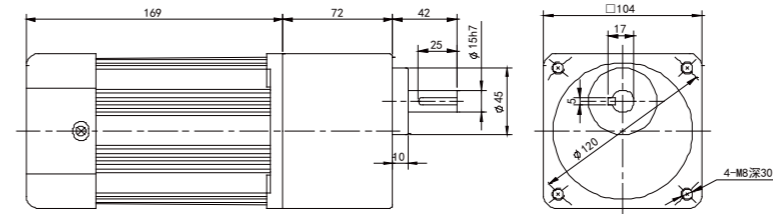
### 160w

### 104\*104mm

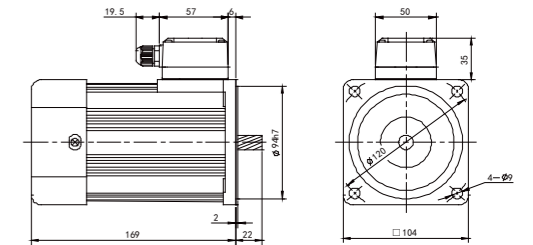


### 尺寸圖 Size drawing

#### 調速電機 Constant Speed (control) Machine 6IK160RGU-CF+6GU(3-180)K



#### 齒軸帶接線盒 Motor With Terminal Box 6IK160RGU-CFT

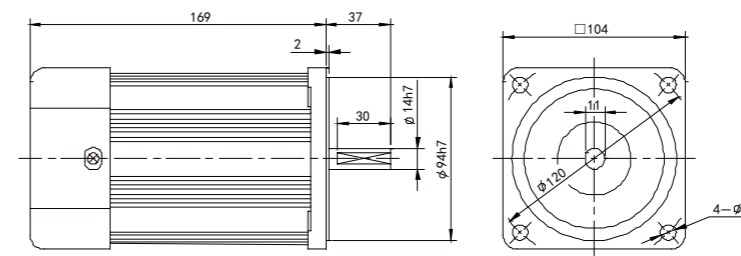


### ●電機特性 Motor characteristics

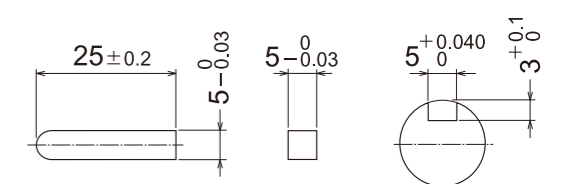
#### ■規格 連續額定 Specifications Continuous Rated

電機型號 Motor model		出力 output W	電壓 voltage V	頻率 frequency Hz	電流 current A	起動轉矩 Starting torque mN·m	額定轉矩 Rated torque mN·m	額定轉速 Rated speed r/min	電容量/耐壓 Capacitance/ pressure endurance μF/AC
圓軸電機 Circular shaft motor	齒軸電機 Gear shaft motor								
6IK160RA-AF	5IK160RGU-AF	160	單相110	50/60	2.4	950	1260	1350	32/250V
6IK160RA-CF	5IK160RGU-CF	160	單相220	50/60	1.25	950	1260	1350	8.0/450V

#### 圓軸電機 Circular Shaft Motor 6IK160RA-CF



#### 鍵 Key (60W.90W.120W.140W.160W. 180W.200W.250W共用)



middle reducer gearbox  
標準減速箱  
速比: 1: 3~180



middle real axis  
直角中空減速箱  
速比: 1: 10~180



quill shaft  
直角中空減速箱  
速比: 1: 10~180

### ●減速機特性 Motor characteristics

單位=上段: N.m/下段: kgfcm  
Unit = upper segment: N · m/lower segment: kgfcm

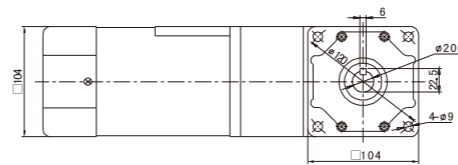
型號 Model	轉速 speed r/min	450	375	270	225	180	150	135	108	90	75	68	54	45	38	34	27	23	18	15	14	11	9	8	5
	減速比 Reduction ratio	3	3.6	5	6	7.5	9	10	12.5	15	18	20	25	30	36	40	50	60	75	90	100	120	150	180	250
6IK160GN-□	Kg/cm	24.1	28.8	40.1	48.1	60.1	72.1	81.3	90.3	108	130	147	163	196	235	279	327	392	400	400	400	400	400	400	400
	N.m	2.36	2.83	3.93	4.71	5.89	7.07	7.96	8.85	10.6	12.7	14.35	16.0	19.2	23.0	27.6	32.0	38.4	39.2	39.2	39.2	39.2	39.2	39.2	39.2

#### ■裝有減速機時的容許轉矩 Permissible Torque Equipped With Reduction

- 減速機品名的□中為減速比的數值，電動機品名的□為電機電壓類型。  
The allowable torque when the gear unit is installed Reducer in the deceleration ratio of the value and the motor name for the motor voltage type.
- 色表示與電動機同一方向運轉，其它則為相反方向。  
The color indicates the same direction as the motor, and the other is the opposite direction.
- 轉速是與電動機的同步轉速 (50HZ: 1350r/min 60HZ:1620r/min) 為基準除以減速比而算出的數值。  
The speed is calculated by dividing the speed of the motor by the speed (50HZ: 1350r / min 60HZ: 1620r / min) divided by the reduction ratio.  
實際轉速將隨負載大小變化而比所示數值減少2-20%左右  
The actual speed will vary with the load size than the value shown by the reduction of about 2-20% its desirable to install the intermediate speed reducer with a reduction ratio of 10 between the electric motor and the reducer when the speed reduction ratio is greater than the reduction ratio of the following table.
- 希望以大于下表的減速比進一步減速時，可在電動與減速機之間安裝與減速機之間安裝減速比為10的中間減速機

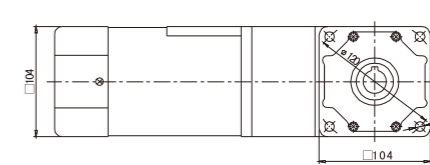
#### 電機+中實軸

Electrical machinery+middle real axis

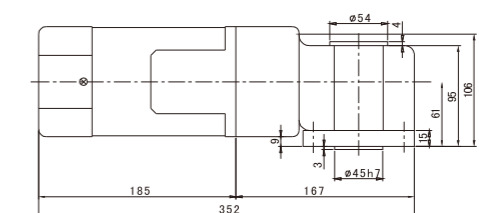
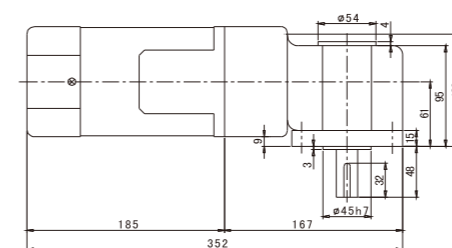
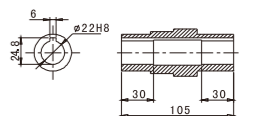


#### 電機+中空軸

Electrical machinery+quill shaft



#### 中空軸 Quill shaft



定速電機

調速電機

定速電磁制動電機

調速電磁制動電機

中型齒輪減速電機

行星減速機

鋁合金刀減速機

## 調速電機

Speed motor

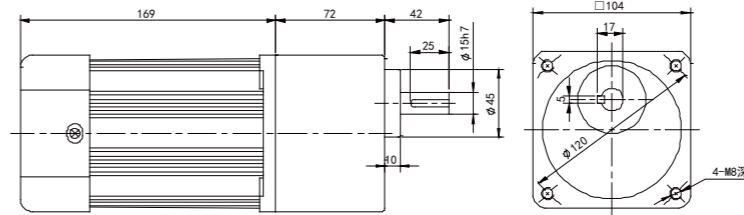
180w

104\*104mm

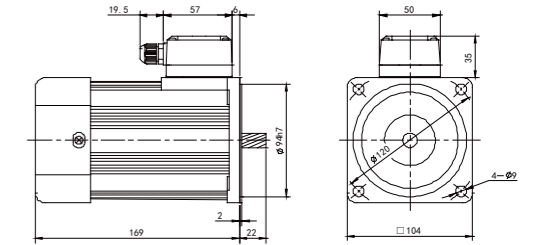


## 尺寸圖 Size drawing

■ 調速電機 Constant Speed (control) Machine  
6IK180RGU-CF+6GU(3-180)K



■ 齒軸帶接線盒 Motor With Terminal Box  
6IK180RGU-CFT

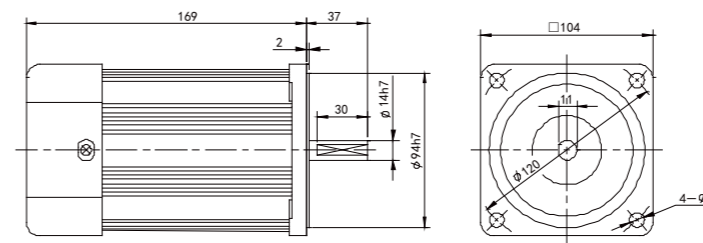


## ● 電機特性 Motor characteristics

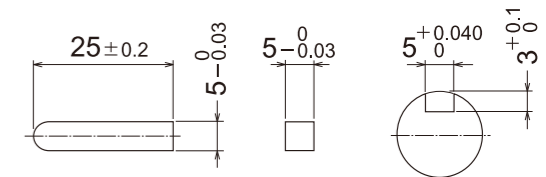
### ■ 規格 連續額定 Specifications Continuous Rated

電機型號 Motor model		出力 output W	電壓 voltage V	頻率 frequency Hz	電流 current A	起動轉矩 Starting torque mN·m	額定轉矩 Rated torque mN·m	額定轉速 Rated speed r/min	電容容量/耐壓 Capacitance/ pressure endurance μF/AC
圓軸電機 Circular shaft motor	齒軸電機 Gear shaft motor								
6IK180RA-AF	6IK180RGU-AF	180	單相110	50/60	3.0	1020	1300	1350/1650	36/250V
6IK180RA-CF	6IK180RGU-CF	180	單相220	50/60	1.3	1020	1300	1350/1650	9.0/450V

■ 圓軸電機 Circular Shaft Motor  
6IK180RA-CF



■ 鍵 Key (60W.90W.120W.140W.160W.  
180W.200W.250W共用)



middle reducer gearbox  
■ 標準減速箱  
速比: 1: 3~180



middle real axis  
■ 直角中空減速箱  
速比: 1: 10~180



quill shaft  
■ 直角中空減速箱  
速比: 1: 10~180

## ● 減速機特性 Motor characteristics

單位=上段: N.m/下段: kgfcm  
Unit = upper segment: N·m/lower segment: kgfcm

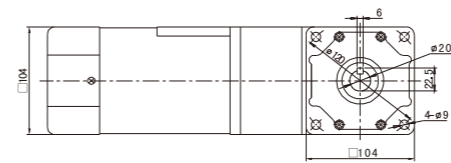
型號 Model	轉速 speed r/min	450	375	270	225	180	150	135	108	90	75	68	54	45	38	34	27	23	18	15	14	11	9	8	5
	減速比 Reduction ratio	3	3.6	5	6	7.5	9	10	12.5	15	18	20	25	30	36	40	50	60	75	90	100	120	150	180	250
6IK180GN-□	Kg/cm	30	36.02	50.00	60.00	74.59	90.00	104.08	120.41	144.90	172.45	202.04	231.63	277.55	317.35	369.39	400.00	400.00	400.00	400.00	400.00	400.00	400.00	400.00	400.00
	N.m	2.94	3.53	4.9	5.88	7.31	8.82	10.2	11.8	14.2	16.9	19.8	22.7	27.2	31.1	36.2	39.2	39.2	39.2	39.2	39.2	39.2	39.2	39.2	39.2

## ■ 裝有減速機時的容許轉矩 Permissible Torque Equipped With Reduction

- 減速機品名的□中為減速比的數值，電動機品名的□為電機電壓類型  
The allowable torque when the gear unit is installed Reducer in the deceleration ratio of the value and the motor name for the motor voltage type.
- □色表示與電動機同一方向運轉，其它則為相反方向  
The color indicates the same direction as the motor, and the other is the opposite direction.
- 轉速是與電動機的同步轉速 (50HZ: 1350r/min 60HZ:1620r/min) 為基準除以減速比而算出的數值。  
The speed is calculated by dividing the speed of the motor by the speed (50HZ: 1350r / min 60HZ: 1620r / min) divided by the reduction ratio.  
實際轉速將隨負載大小變化而比所示數值減少2~20%左右  
The actual speed will vary with the load size than the value shown by the reduction of about 2-20% its desirable to install the intermediate speed reducer with a reduction ratio of 10 between the electric motor and the reducer when the speed reduction ratio is greater than the reduction ratio of the following table.
- 希望以大于下表的減速比進一步減速時，可在電動與減速機之間安裝與減速機之間安裝減速比為10的中間減速機

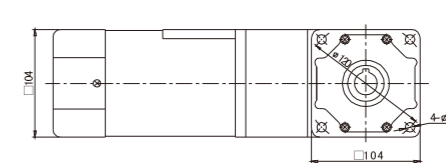
## 電機+中實軸

Electrical machinery+middle real axis



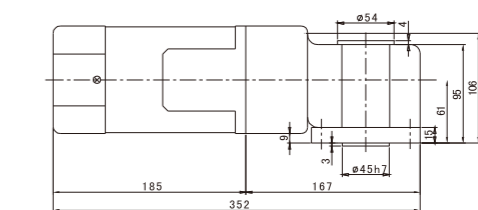
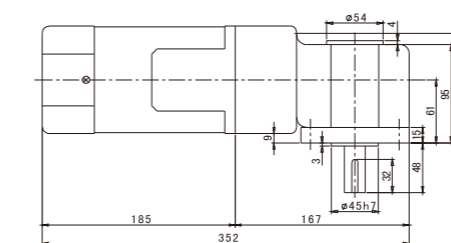
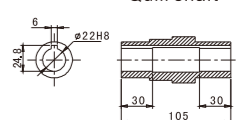
## 電機+中空軸

Electrical machinery+quill shaft



## 中空軸

Quill shaft



定速電機

調速電機

定速電磁制動電機

調速電磁制動電機

中型齒輪減速電機

行星減速機

鋁合金刀減速機

## 調速電機

Speed motor  
**200w**  
104\*104mm



### ● 電機特性 Motor characteristics

#### ■ 規格 連續額定 Specifications Continuous Rated

電機型號 Motor model		出力 output W	電壓 voltage V	頻率 frequency Hz	電流 current A	起動轉矩 Starting torque mN·m	額定轉矩 Rated torque mN·m	額定轉速 Rated speed r/min	電容量/耐壓 Capacitance/ pressure endurance μF/AC
圓軸電機 Circular shaft motor	齒軸電機 Gear shaft motor								
6IK200RA-AF	6IK200RGU-AF	200	單相110	50/60	3.2	1100	1470	1350/1650	40/250V
6IK200RA-CF	6IK200RGU-CF	200	單相220	50/60	1.6	1100	1470	1350/1650	10/450V



middle reducer gearbox  
■ 標準減速箱  
速比: 1: 3~180



middle real axis  
■ 直角中實減速箱  
速比: 1: 10~180



quill shaft  
■ 直角中空減速箱  
速比: 1: 10~180

### ● 減速機特性 Motor characteristics

單位=上段: N.m/下段: kgfcm  
Unit = upper segment: N · m/lower segment: kgfcm

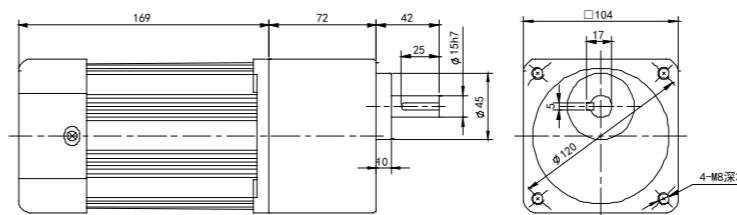
型號 Model	轉速 speed r/min	450	375	270	225	180	150	135	108	90	75	68	54	45	38	34	27	23	18	15	14	11	9	8	5
	減速比 Reduction ratio	3	3.6	5	6	7.5	9	10	12.5	15	18	20	25	30	36	40	50	60	75	90	100	120	150	180	250
6IK200GN-□	Kg/cm	35.2	42.3	58.8	70.6	88.2	106	126	147	176	212	253	294	353	400	400	400	400	400	400	400	400	400	400	400
	N.m	3.52	4.23	5.88	7.06	8.82	10.6	12.6	14.7	17.6	21.2	25.3	29.4	35.3	39.2	39.2	39.2	39.2	39.2	39.2	39.2	39.2	39.2	39.2	39.2

#### ■ 裝有減速機時的容許轉矩 Permissible Torque Equipped With Reduction

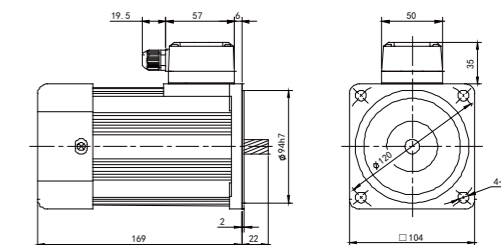
- 減速機品名的□中為減速比的數值，電動機品名的□為電機電壓類型  
The allowable torque when the gear unit is installed Reducer in the deceleration ratio of the value and the motor name for the motor voltage type.
- □色表示與電動機同一方向運轉，其它則為相反方向  
The color indicates the same direction as the motor, and the other is the opposite direction.
- 轉速是與電動機的同步轉速（50HZ: 1350r/min 60HZ:1620r/min）為基準除以減速比而算出的數值。  
The speed is calculated by dividing the speed of the motor by the speed (50HZ: 1350r / min 60HZ: 1620r / min) divided by the reduction ratio.  
實際轉速將隨負載大小變化而比所示數值減少2~20%左右  
The actual speed will vary with the load size than the value shown by the reduction of about 2-20% its desirable to install the intermediate speed reducer with a reduction ratio of 10 between the electric motor and the reducer when the speed reduction ratio is greater than the reduction ratio of the following table.
- 希望以大于下表的減速比進一步減速時，可在電動與減速機之間安裝與減速機之間安裝減速比為10的中間減速機

### 尺寸圖 Size drawing

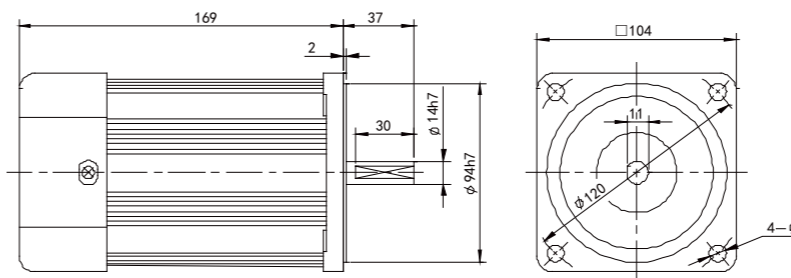
#### ■ 調速電機 Constant Speed (control) Machine 6IK200RGU-CF+6GU(3-180)K



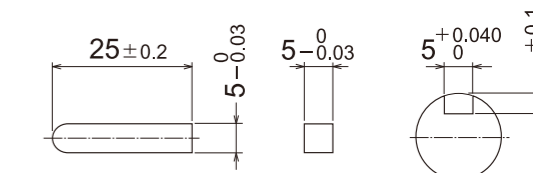
#### ■ 齒軸帶接線盒 Motor With Terminal Box 6IK200RGU-CFT



#### ■ 圓軸電機 Circular Shaft Motor 6IK200RA-CF

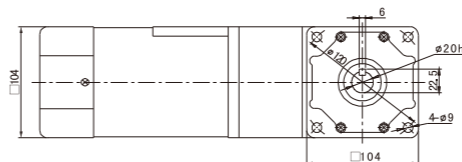


#### ■ 鍵 Key (60W.90W.120W.140W.160W.180W.200W.250W共用)



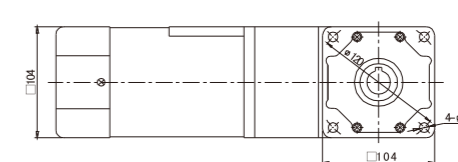
#### 電機+中實軸

Electrical machinery+middle real axis



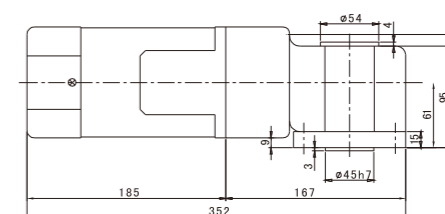
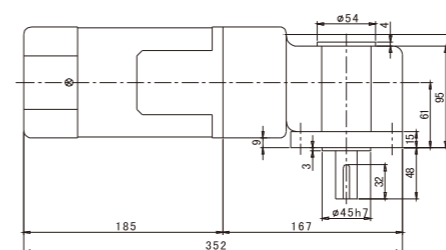
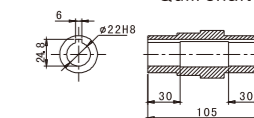
#### 電機+中空軸

Electrical machinery+quill shaft



#### 中空軸

Quill shaft



# 調速電機

## Speed motor

### 250w

### 104\*104mm



### ● 電機特性 Motor characteristics

#### ■ 規格 連續額定 Specifications Continuous Rated

電機型號 Motor model		出力 output	電壓 voltage	頻率 frequency	電流 current	起動轉矩 Starting torque	額定轉矩 Rated torque	額定轉速 Rated speed	電容容量/耐壓 Capacitance/ pressure endurance
圓軸電機 Circular shaft motor	齒軸電機 Gear shaft motor	W	V	Hz	A	mN·m	mN·m	r/min	μF/AC
6IK250RA-AF	6IK250RGU-AF	250	单相110	50/60	3.5	1200	1790	1350/1600	48/250V
6IK250RA-CF	6IK250RGU-CF	250	单相220	50/60	1.8	1200	1790	1350/1600	12/450V



middle reducer gearbox  
■ 標準減速箱  
速比: 1: 3~180



middle real axis  
■ 直角中實減速箱  
速比: 1: 10~180



quill shaft  
■ 直角中空減速箱  
速比: 1: 10~180

### ● 減速機特性 Motor characteristics

單位=上段: N.m/下段: kgfcm  
Unit = upper segment: N·m/lower segment: kgfcm

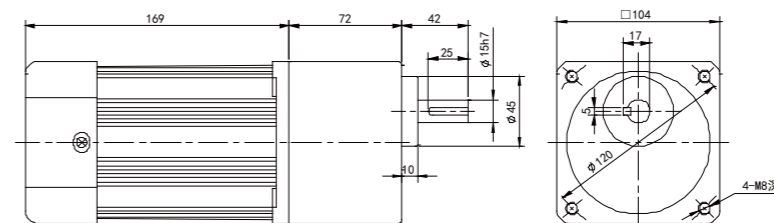
型號 Model	轉速speed r/min	450	375	270	225	180	150	135	108	90	75	68	54	45	38	34	27	23	18	15	14	11	9	8	5
	減速比 Reduction ratio	3	3.6	5	6	7.5	9	10	12.5	15	18	20	25	30	36	40	50	60	75	90	100	120	150	180	250
6IK250GN-□	Kg/cm	43	520	71.6	86	107	129	152	179	215	258	308	358	400	400	400	400	400	400	400	400	400	400	400	400
	N.m	4.3	5.2	7.16	8.6	10.7	12.9	15.2	17.9	21.5	25.8	30.8	35.8	39.2	39.2	39.2	39.2	39.2	39.2	39.2	39.2	39.2	39.2	39.2	39.2

### ■ 裝有減速機時的容許轉矩 Permissible Torque Equipped With Reduction

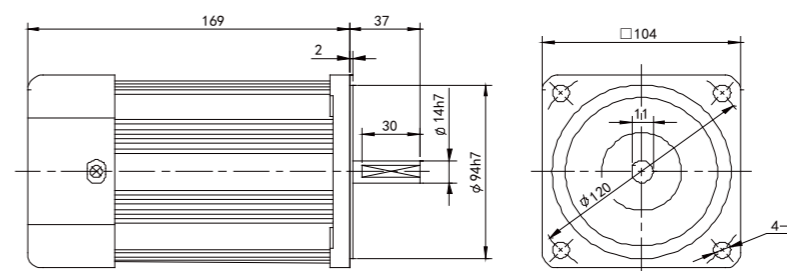
- 減速機品名的□中為減速比的數值，電動機品名的□為電機電壓類型  
The allowable torque when the gear unit is installed Reducer in the deceleration ratio of the value and the motor name for the motor voltage type.
- 色表示與電動機同一方向運轉，其它則為相反方向  
The color indicates the same direction as the motor, and the other is the opposite direction.
- 轉速是與電動機的同步轉速（50HZ: 1350r/min 60HZ:1620r/min）為基準除以減速比而算出的數值。  
The speed is calculated by dividing the speed of the motor by the speed (50HZ: 1350r / min 60HZ: 1620r / min) divided by the reduction ratio.  
實際轉速將隨負載大小變化而比所示數值減少2-20%左右  
The actual speed will vary with the load size than the value shown by the reduction of about 2-20% its desirable to install the intermediate speed reducer with a reduction ratio of 10 between the electric motor and the reducer when the speed reduction ratio is greater than the reduction ratio of the following table.
- 希望以大于下表的減速比進一步減速時，可在電動與減速機之間安裝與減速機之間安裝減速比為10的中間減速機

### 尺寸圖 Size drawing

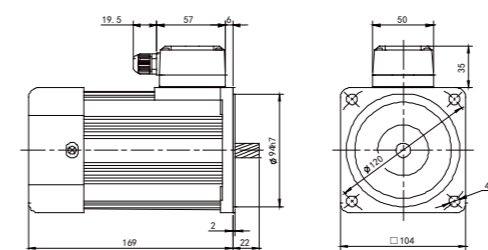
#### ■ 調速電機 Constant Speed (control) Machine 6IK250RGU-CF+6GU(3-180)K



#### ■ 圓軸電機 Circular Shaft Motor 6IK250RA-CF



#### ■ 齒軸帶接線盒 Motor With Terminal Box 6IK250RGU-CFT



#### ■ 鍵 Key (60W.90W.120W.140W.160W.180W.200W.250W共用)

