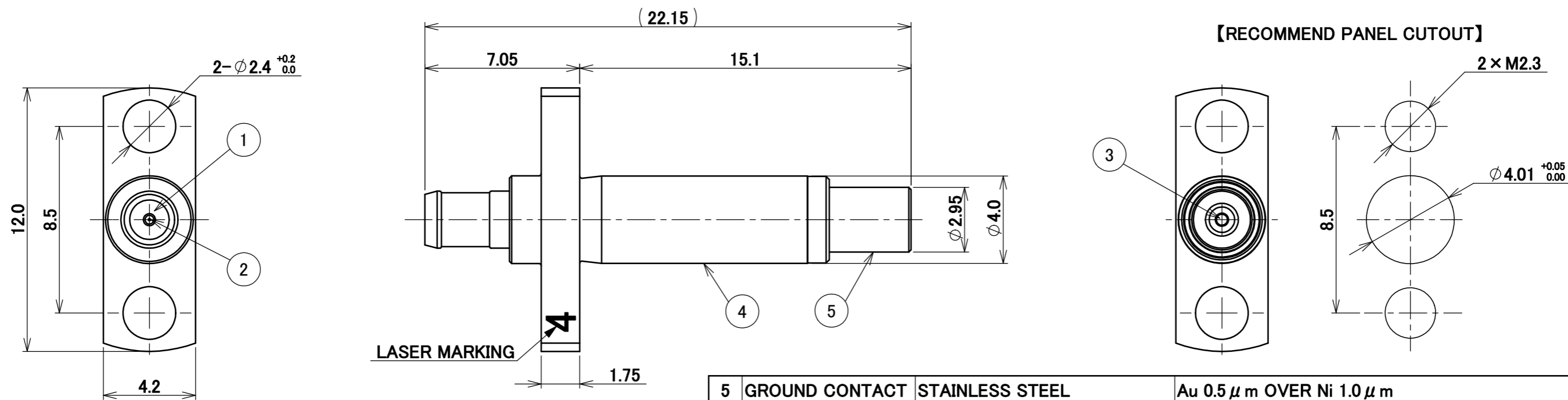
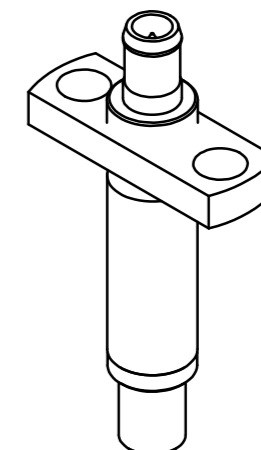
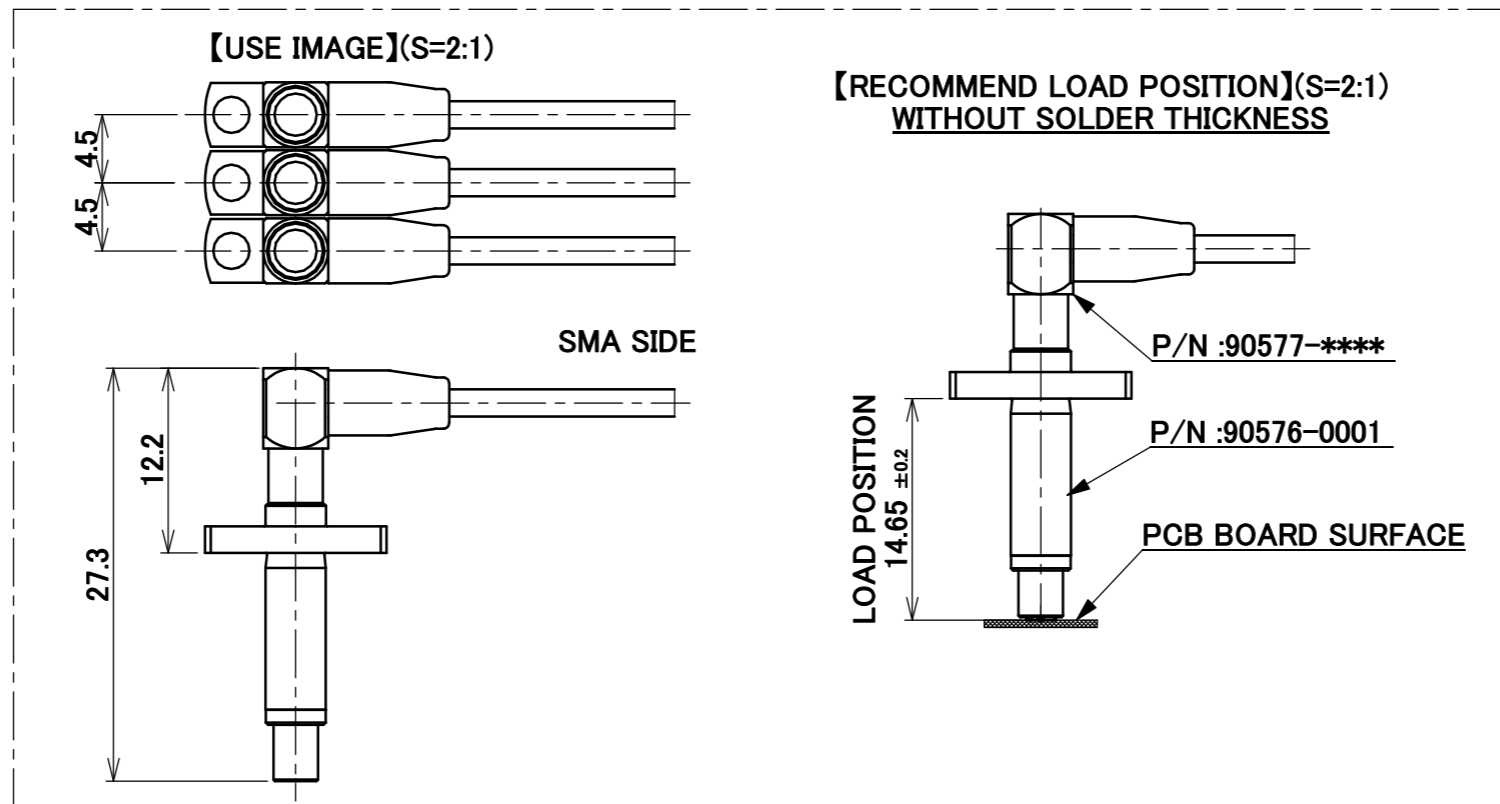
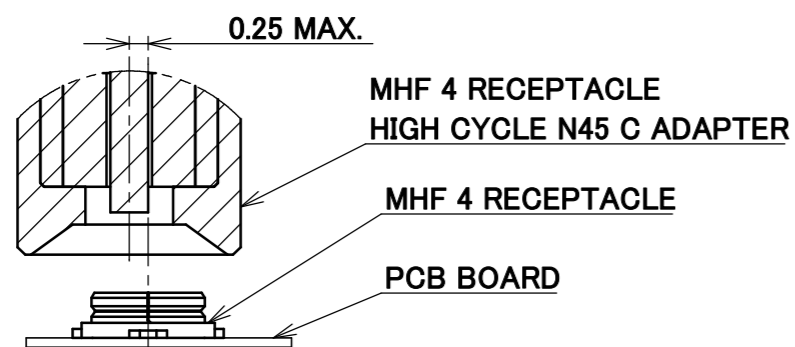


PART No.
90576-0001

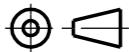


NOTES.
1. AXIAL MISALIGNMENT DISTANCES :0.25mm MAX.



5	GROUND CONTACT	STAINLESS STEEL	Au 0.5 μ m OVER Ni 1.0 μ m		
4	SHELL	BRASS	Ni 1.0 μ m		
3	CONTACT PROBE	BRASS	Au 1.0 μ m MIN. OVER Ni 1.0 μ m MIN.		
2	PIN CONTACT	BERYLIUM COPPER	Au 1.0 μ m MIN. OVER Ni 1.0 μ m MIN.		
1	INSLATOR	PTFE			
NO.	DESCRIPTION	MATERIAL	FINISH . REMARKS		
7	Z190618 K.I 2019/05/08 Y.H	ANGLE $\pm 2^\circ$ 6 OVER 30 MAX.	± 0.3	PROJECTION	
6	Z190238 K.M 2019/02/22 Y.H	6 MAX. ± 0.2 30 OVER 120 MAX.	± 0.5	SERIES No. R0	
5	Z131027 S.H 2013/11/11 Tom	GENERAL TOLERANCE.		TITLE	
4	Z13376 K.N 2013/05/01 E.K	DWG. K.Nisiyama	DATE 2012/03/19	MHF [®] 4 RECEPTACLE HIGH CYCLE N45 C ADAPTER	
3	Z121033 H.K 2012/12/03 Tom	CHK.	DATE		
2	Z12973 K.N 2012/11/08 E.K	APP. E.Kawabe	DATE 2012/03/20	SCALE 5:1	
REV.	ECN	BY	DATE	APP.	UNIT mm
REVISION RECORD					
DWG. No. 90576					SHEET 1/2 REV. 7
I-PEX					

ITEMS	SPECIFICATION
APPLICABLE CONNECTOR PART No.	MHF 4 RECEPTACLE P/N:20449-001E MHF 4L RECETACLE P/N:20579-001E-** MHF SERIES N45 C TO SMA ADPTER CABLE P/N:90577-0***
RATING FREQUENCY	DC~6 GHz
OPERATING TEMPERATURE	243~343 K (-30°C~+70°C)
OPERATING HUMIDITY	85% MAX.(NON-CONDENSING)
VSWR	1.3 MAX. at DC~3GHz, 1.5 MAX. at 3~6GHz
INSULATION RESISTANCE	500 Mohm MIN. at DC100V
DIELECTRIC WITHSTANDING VOLTAGE	AC300V
DURABILITY	RECEPTACLE: 10.000CYCLE MHF SERIES N45 C TO SMA ADPTER CABLE: 100CYCLE
PRODUCT SPECIFICATION	PRS-2002
TEST REPORT	TR-14094
INSTRUCTION MANUAL	HIM-14020

ANGLE	±2°	6 OVER 30 MAX.	±0.3	PROJECTION 	SERIES No. R0	CUSTOMER COPY
6 MAX.	±0.2	30 OVER 120 MAX.	±0.5			
GENERAL TOLERANCE.				TITLE MHF® 4 RECEPTACLE HIGH CYCLE N45 C ADAPTER	DWG. No. 90576	SCALE
DWG.	DATE		-			
CHK.	DATE		UNIT			
APP.	DATE		mm			
				SIZE	A3	SHEET 2/2
						REV. 7