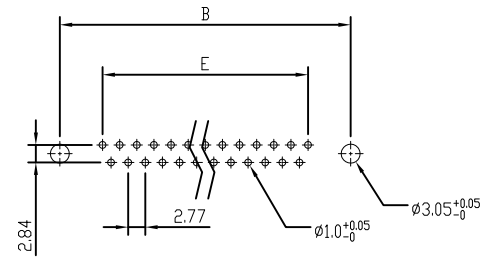
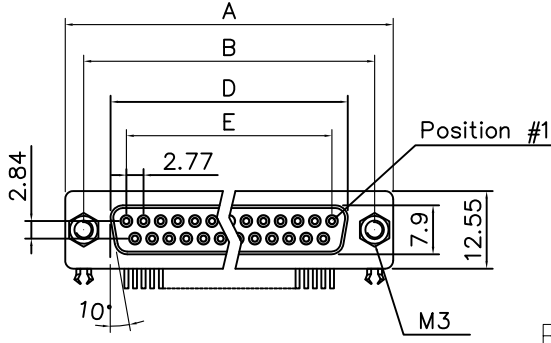
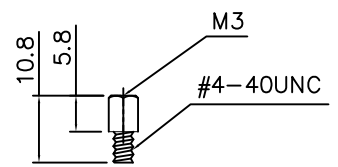
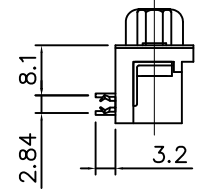
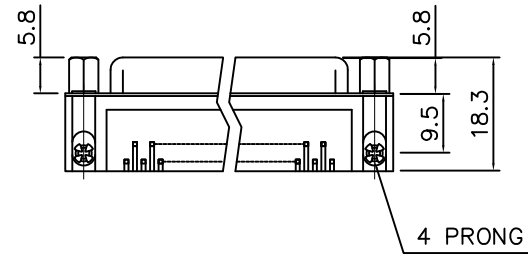


This document is the property of Amphenol Corporation and is delivered on the express condition that it is not to be disclosed, reproduced or used, in whole or in part, for manufacture or sale by anyone other than Amphenol Corporation without its prior consent, & that no right is granted to disclose or to use any information in this document.

Customer Drawing



RECOMMENDED P.C.B LAYOUT
(TOLERANCE $\pm 0.05\text{MM}$)



#4-40 unc screwlock installed

Positions	A	B	D	E
09	30.81	24.99	16.33	11.08
15	39.20	33.30	24.70	19.39
25	53.05	47.04	38.40	33.24
37	69.40	63.50	54.80	49.86



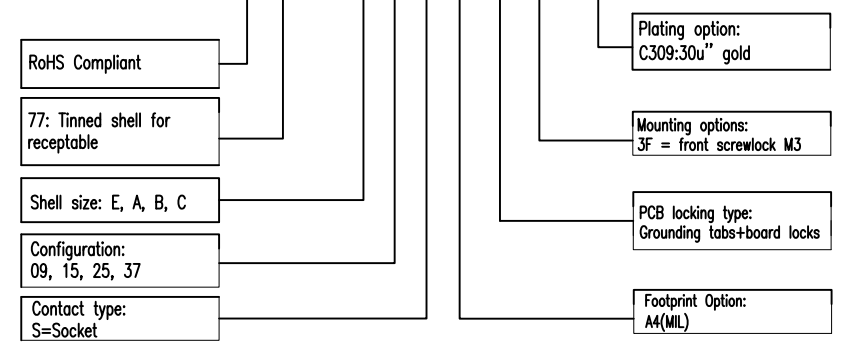
REVISIONS				
SYM	ECN	DESCRIPTION	DATE	APPROVED
1	HK--	First Release Drawing	01/25/17	IP

D-SUB TECHNICAL DATA

- SHELL : Steel, 100u" min Tin over 50u" min Nickel over 50u" min Copper
- BODY : PBT, UL 94V-0, Color:Black.
- CONTACTS : Copper alloy
30u" Gold over 50u" nickel on mating area
100u" tin over 50u" nickel on solder area
- BOARDLOCK: Brass, Tin Plated.
- RIVET: Copper Alloy, Nickel Plated.
- SCREWLOCK: Brass, Nickel Plated.
- ELECTRICAL : Voltage rating 250 VAC (RMS)
Current Rating :3 AMP
Withstanding Voltage >1000 VAC(RMS)
Insulation resistance >1000 M Ohms
Contact resistance 20 mOhms max
- MARKING : Amphenol...(Series No.)
Commercial reference
Manufacturing date

PRODUCT CODE

L 77 SD X XX S A4 CH 3F C309



UNLESS OTHERWISE SPECIFIED TOLERANCES		APPROVAL		DATE
U.S.	METRIC	DRAWN	FILED	01/25/17
.X +/-	0.50	Checked	Tony Tang	01/25/17
.XX +/-	0.30	CHECKED		
.XXX +/-	0.20			
FRACTIONS +/-	5'			
ANGLES +/-				
FOR MATERIALS AND FINISHES SEE NOTES		DRAWING FILE :		
REMOVE SHARP EDGES		ANGLE OF PROJECTION		
DIMENSIONS				
U.S.	INCHES			
METRIC	MM			

Amphenol		
Stamped and formed contact,SD series		
SIZE	DRAWING NO.	REV.
A4	L77SDXXXSA4CH3FC309	1
SCALE	NONE	SHEET 1 OF 1