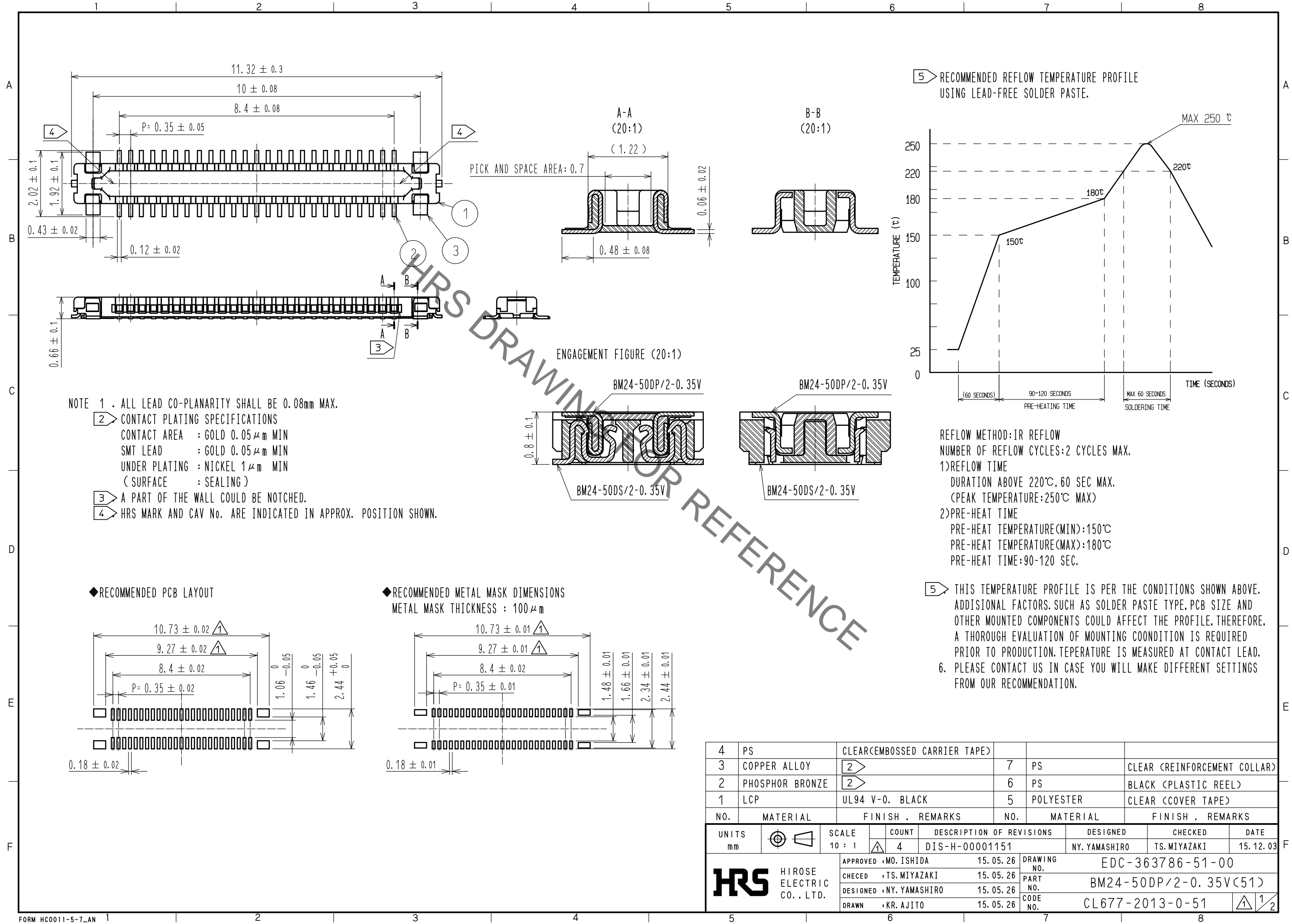
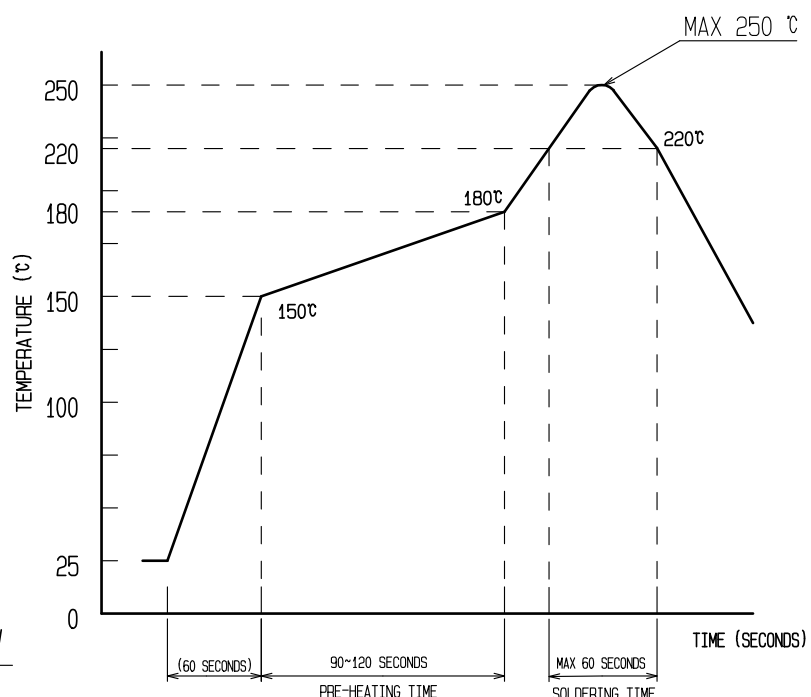


Nov.1.2021 Copyright 2021 HIROSE ELECTRIC CO., LTD. All Rights Reserved.  
In case of consideration for using Automotive equipment / device which demand high reliability, kindly contact our sales window correspondents.



5) RECOMMENDED REFLOW TEMPERATURE PROFILE USING LEAD-FREE SOLDER PASTE.

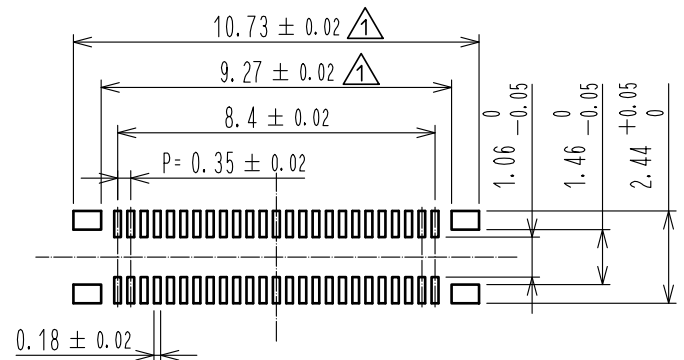


REFLOW METHOD: IR REFLOW  
 NUMBER OF REFLOW CYCLES: 2 CYCLES MAX.  
 1) REFLOW TIME  
 DURATION ABOVE 220°C, 60 SEC MAX.  
 (PEAK TEMPERATURE: 250°C MAX)  
 2) PRE-HEAT TIME  
 PRE-HEAT TEMPERATURE (MIN): 150°C  
 PRE-HEAT TEMPERATURE (MAX): 180°C  
 PRE-HEAT TIME: 90-120 SEC.

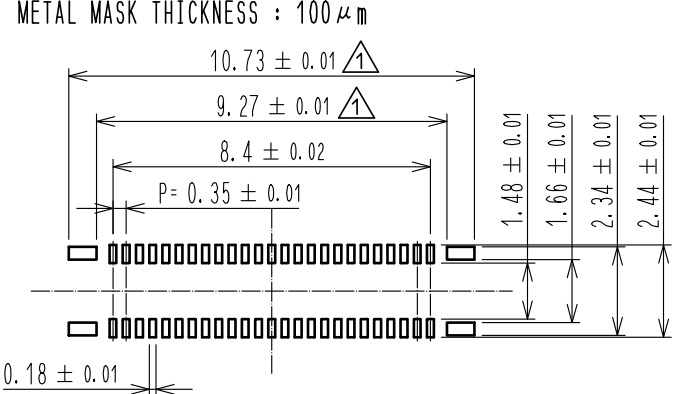
5) THIS TEMPERATURE PROFILE IS PER THE CONDITIONS SHOWN ABOVE. ADDITIONAL FACTORS, SUCH AS SOLDER PASTE TYPE, PCB SIZE AND OTHER MOUNTED COMPONENTS COULD AFFECT THE PROFILE. THEREFORE, A THOROUGH EVALUATION OF MOUNTING COONDITION IS REQUIRED PRIOR TO PRODUCTION. TEPERATURE IS MEASURED AT CONTACT LEAD.  
 6. PLEASE CONTACT US IN CASE YOU WILL MAKE DIFFERENT SETTINGS FROM OUR RECOMMENDATION.

- NOTE 1 . ALL LEAD CO-PLANARITY SHALL BE 0.08mm MAX.  
 2) CONTACT PLATING SPECIFICATIONS  
 CONTACT AREA : GOLD 0.05 μm MIN  
 SMT LEAD : GOLD 0.05 μm MIN  
 UNDER PLATING : NICKEL 1 μm MIN  
 ( SURFACE : SEALING )  
 3) A PART OF THE WALL COULD BE NOTCHED.  
 4) HRS MARK AND CAV No. ARE INDICATED IN APPROX. POSITION SHOWN.

◆ RECOMMENDED PCB LAYOUT



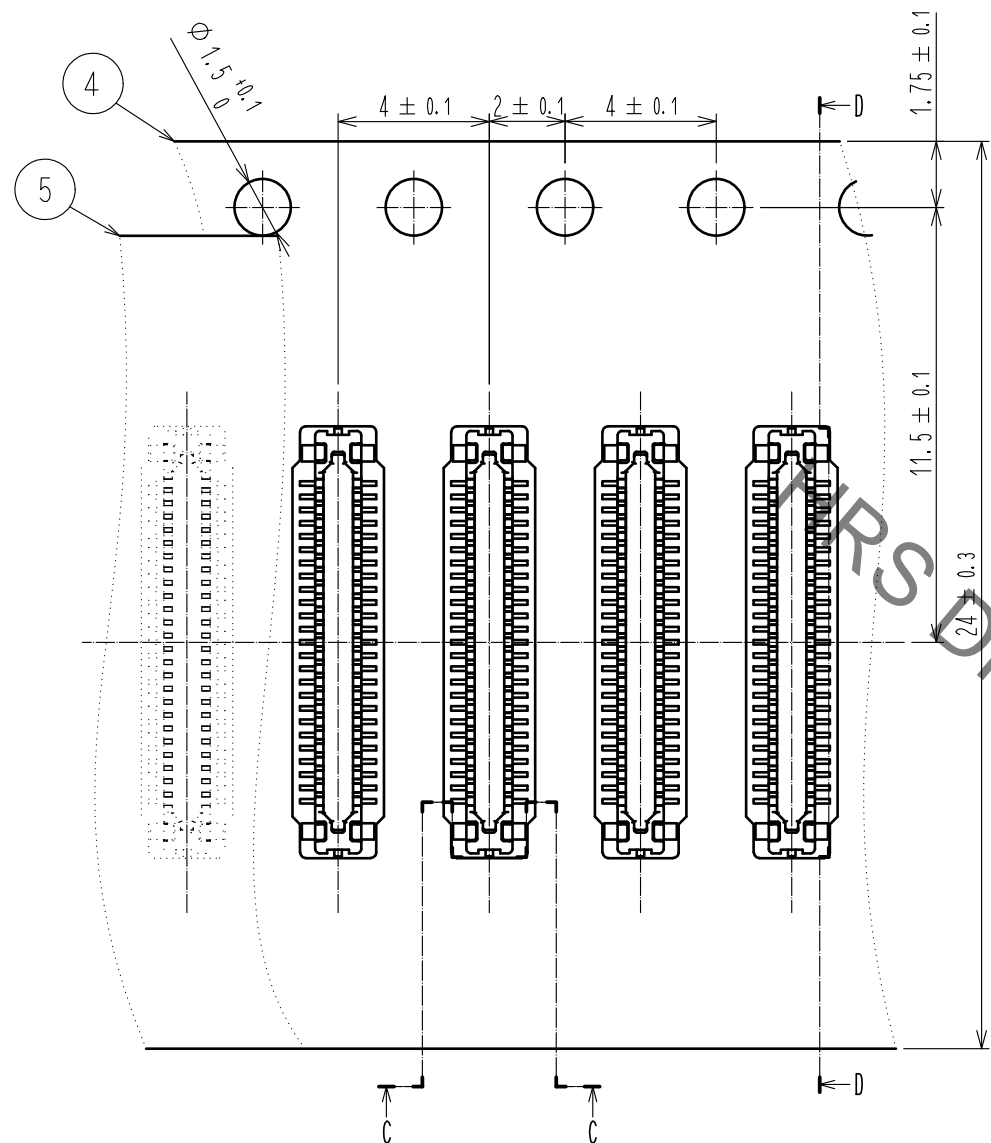
◆ RECOMMENDED METAL MASK DIMENSIONS



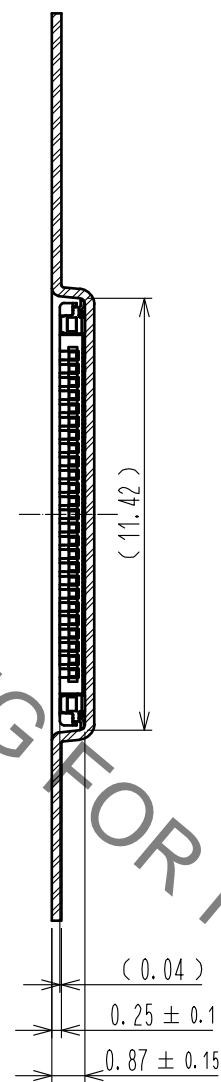
|                                      |                 |                              |            |                                            |                              |
|--------------------------------------|-----------------|------------------------------|------------|--------------------------------------------|------------------------------|
| 4                                    | PS              | CLEAR(EMBOSSED CARRIER TAPE) |            |                                            |                              |
| 3                                    | COPPER ALLOY    | 2                            | 7          | PS                                         | CLEAR (REINFORCEMENT COLLAR) |
| 2                                    | PHOSPHOR BRONZE | 2                            | 6          | PS                                         | BLACK (PLASTIC REEL)         |
| 1                                    | LCP             | UL94 V-0. BLACK              | 5          | POLYESTER                                  | CLEAR (COVER TAPE)           |
| NO.                                  | MATERIAL        | FINISH . REMARKS             | NO.        | MATERIAL                                   | FINISH . REMARKS             |
| UNITS<br>mm                          |                 | SCALE<br>10 : 1              | COUNT<br>4 | DESCRIPTION OF REVISIONS<br>DIS-H-00001151 | DESIGNED<br>NY. YAMASHIRO    |
|                                      |                 |                              |            |                                            | CHECKED<br>TS. MIYAZAKI      |
|                                      |                 |                              |            |                                            | DATE<br>15.12.03             |
| <b>HRS</b> HIROSE ELECTRIC CO., LTD. |                 | APPROVED : MO. ISHIDA        | 15.05.26   | DRAWING NO.<br>EDC-363786-51-00            |                              |
|                                      |                 | CHECED : TS. MIYAZAKI        | 15.05.26   | PART NO.<br>BM24-50DP/2-0.35V(51)          |                              |
|                                      |                 | DESIGNED : NY. YAMASHIRO     | 15.05.26   | CODE NO.<br>CL677-2013-0-51                |                              |
|                                      |                 | DRAWN : KR. AJITO            | 15.05.26   |                                            |                              |

Nov.1.2021 Copyright 2021 HIROSE ELECTRIC CO., LTD. All Rights Reserved.  
 In case of consideration for using Automotive equipment / device which demand high reliability, kindly contact our sales window correspondents.

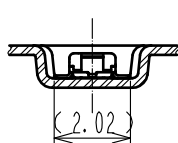
EMBOSSED CARRIER TAPE PACKAGING (FREE)



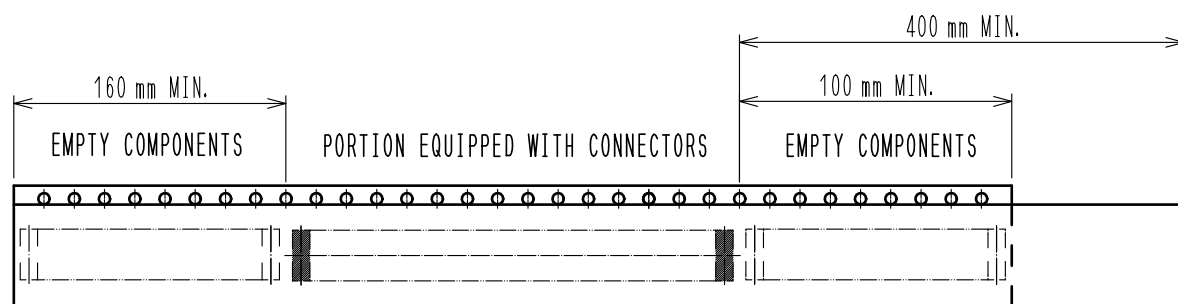
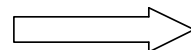
D-D(5:1)



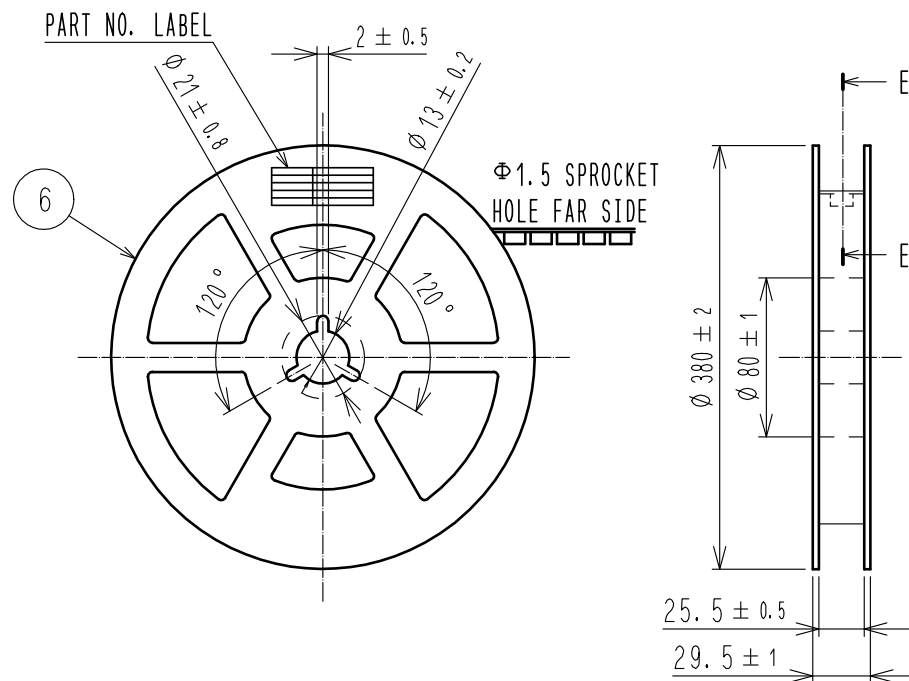
C-C (5:1)



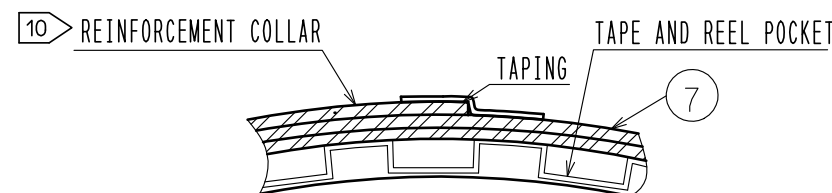
DIRECTION OF UNREELING



STYLE AND DIMENTION OF REEL (FREE)



E-E (FREE)



DETAIL OF PART NO. LABEL

|       |                       |
|-------|-----------------------|
| 製造年月日 | ** ** *               |
| 製品コード | CL0677-2013-0(51)     |
| 製品名   | BM24-50DP/2-0.35V(51) |
| 数量    | 10,000                |
| 納入者   | ヒロセ電機(株)              |

DATA OF MANUFACTURED  
 CODE NO.  
 PART NO.  
 QUANTITY  
 SUPPLIER

- 7 . PER REEL 10,000 CONNECTORS.
- 8 . THE DIMENSIONS IN PARENTHESES ARE FOR REFERENCE.
- 9 . REFER TO JIS C 0806, IEC 60286-3(PACKAGING OF COMPONENTS FOR AUTOMATIC HANDLING)
- 10 . AFTER PACKAGING, ROLL 2 METERS OF THE REINFORCEMENT COLLAR TO OUTER CIRCUMFERENCE OF TAPE AND REEL POCKET, AND TAPE DOWN AT THE END THE COLLAR.

|            |             |                       |
|------------|-------------|-----------------------|
| <b>HRS</b> | DRAWING NO. | EDC-363786-51-00      |
|            | PART NO.    | BM24-50DP/2-0.35V(51) |
|            | CODE NO.    | CL677-2013-0-51       |
|            |             | $\triangle$ 2/2       |