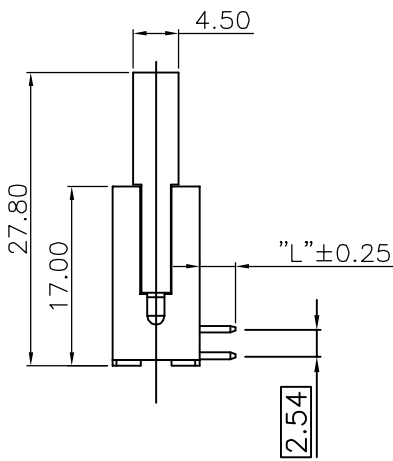
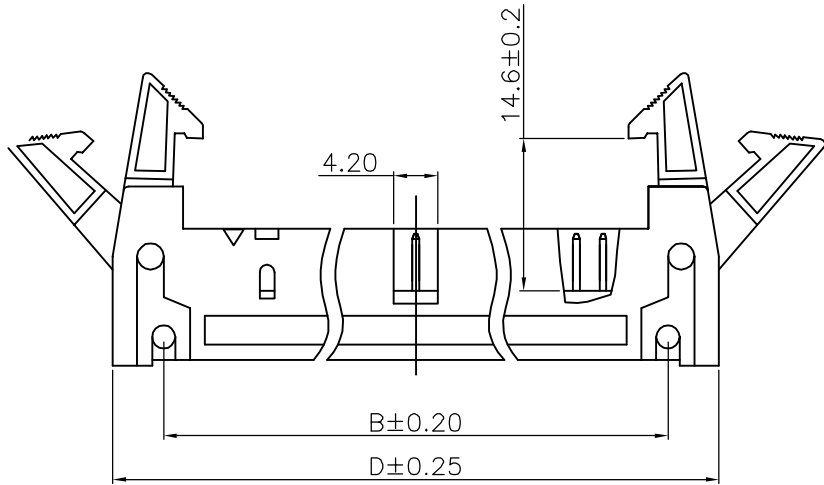
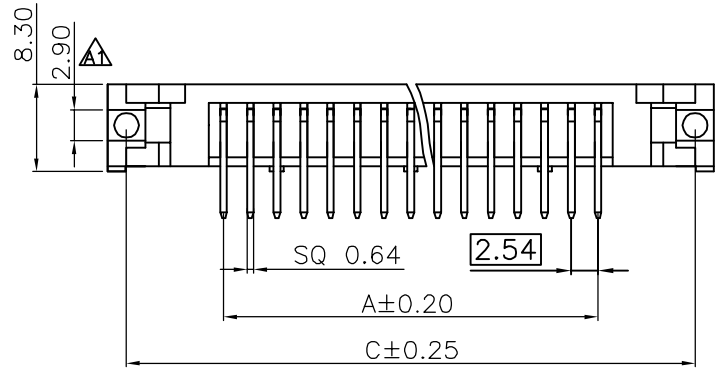


SIGN	DATE	DESCRIPTION	APPROVER
△	06.23	NEW PRODUCT ISSUE	nierzhenqi
△			
△			



NOTES:

- MATERIALS:
 - INSULATOR: PBT+30%GF UL94V-0, BLACK.
 - CONTACT: Copper ALLOY.
 - PLATED: CONTACT GOLD PLATED OVER Ni.
- ELECTRICAL CHARACTERISTICS:
 - CURRENT RATING: 3 Amp.
 - CONTACT RESISTANCE: 20 mOhms MAX.
 - WITHSTANDING VOLTAGE: 500V AC 1MINUTE.
 - INSULATION RESISTANCE: 1000 MOhms MIN.
 - Operation Temperature: -40° C~+105° C.



PIN	A±0.20	B±0.25	C±0.20	D±0.25
6	5.08	16.76	22.86	26.92
8	7.62	19.30	25.40	29.46
10	10.16	21.84	27.94	32.00
14	15.24	26.92	33.02	37.08
16	17.78	29.46	35.56	39.62
18	20.32	32.00	38.10	42.16
20	22.86	34.54	40.64	44.70
24	27.94	39.62	45.72	49.78
26	30.48	42.16	48.26	52.32
30	35.56	47.24	53.34	57.40
34	40.64	52.32	58.42	62.48
40	48.26	59.94	66.04	70.10
50	60.96	72.64	78.74	82.80
60	73.66	85.35	91.44	95.50
64	78.74	90.42	96.52	100.58

Part NO.

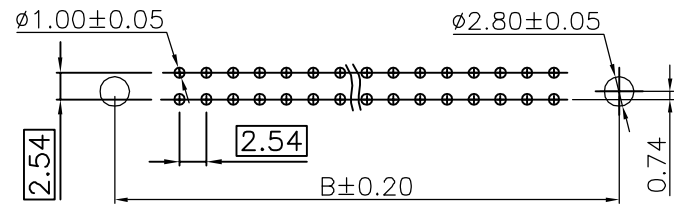
230-0*1-***-20*

Solder length
Dim"L"
1:3.4
3:4.0
4:2.9

Housing Color
0:Black
6:Blue
8:Grey

Plated
2:G/F
3:Au 10u"
4:Au 15u"
5:Au 30u"
9:Au 3u"
A:Au 5u"

NO.Of Positions
6-64



PCB LAYOUT

nexttron 正凌精密工业股份有限公司
NEXTRONICS ENGINEERING CORP

PART. NAME: xxPIN 2.54mm EJECTOR HEADER CONNECTOR TITLE: 2.54mm EJECTOR HEADER RIGHT ANGLE Long Ejector

PART. NO.: SEE TABLE DWG NAME: 230-011-826-209

APPROVED BY	CHECKED BY	DESIGNED BY	DRAWN BY	CUSTOM NO.:	Tolerance
jeff	jeff		nierzhenqi		x. ±0.50
				UNITS: mm	x.xx ±0.20
				SCALE:	x.xx ±0.10
				REVISION:	xx* ±1*