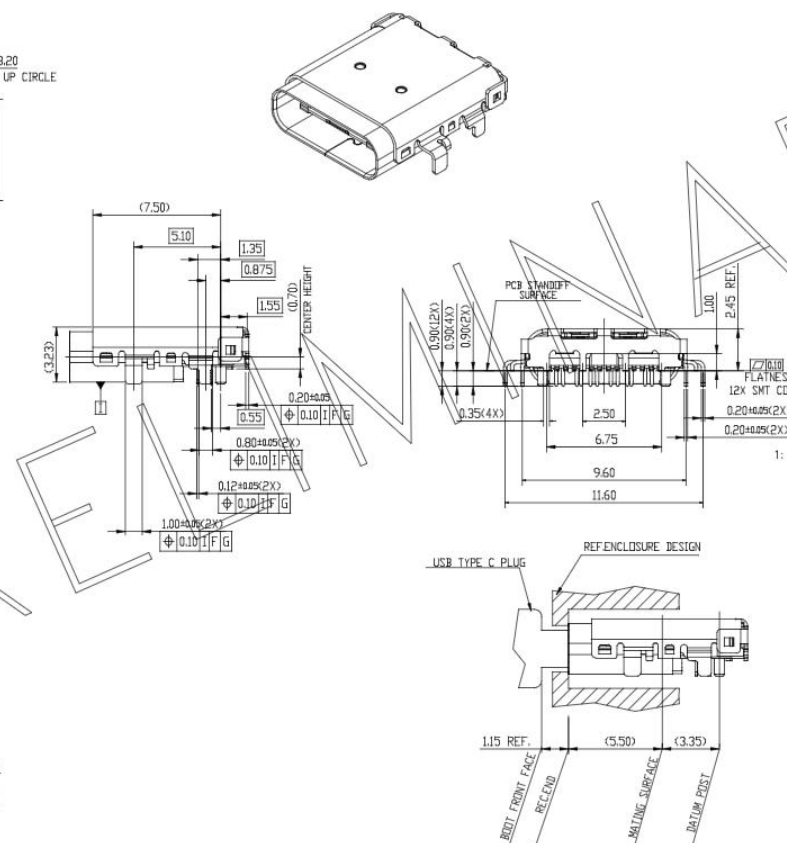
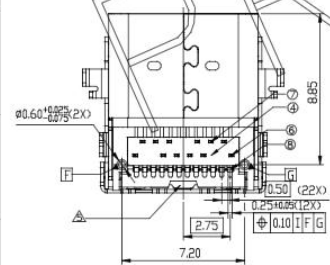
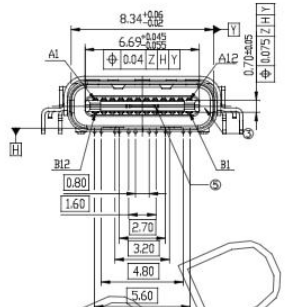
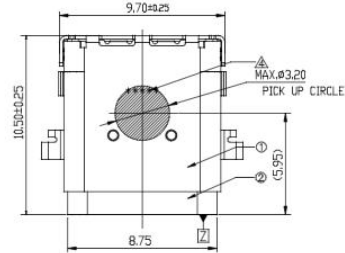


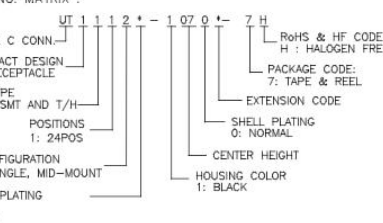
IDEAS GENERATED DRAWING. DON'T CHANGE BY HAND.

REV.	ECN NO.	APPD.
X11		Nick Lin



NOTE: UNLESS OTHERWISE SPECIFIED  
 1. DIMENSIONS SHALL BE INTERPRETED PER ASME Y14.5M-2009.  
 2. ELECTRICAL CHARACTERISTIC:  
 2-1. CONTACT CURRENT RATING:  
 VBUS AND GND CONTACTS RATED AT 1.25A EA., PARALLELED FOR A TOTAL OF 5A.  
 2-2. LOW LEVEL CONTACT RESISTANCE:  
 40mOhms MAX. FOR VBUS, GND AND OTHER CONTACTS.  
 50mOhms MAX. AFTER ENVIRONMENT TEST.  
 3. MECHANICAL CHARACTERISTICS:  
 3-1. INSERTION FORCE: 5~20N.  
 3-2. EXTRACTION FORCE: 8~20N.  
 3-3. DURABILITY: 10,000 MATING CYCLES.  
 3-4. OPERATING TEMPERATURE: -55°C TO +85°C.  
 △ THE DATE CODE IS LOCATED APPROXIMATELY AS SHOWN.  
 △ THE HOUSING GATE POSITION IS LOCATED APPROXIMATELY AS SHOWN.  
 6. PLEASE CONTACT FOXCONN SALES REPRESENTATIVE TO VERIFY PRODUCT DETAILS & AVAILABILITY.  
 7. PRODUCT NO. MATRIX :

UT: USB TYPE C CONN.  
 CONTACT DESIGN  
 1: RECEPTACLE  
 TEMINATION TYPE  
 1: RIGHT ANGLE, HYBRID SMT AND T/H  
 POSITIONS  
 1: 24POS  
 CONFIGURATION  
 2: SINGLE, MID-MOUNT  
 CONTACT AREA PLATING  
 3: 30U" GOLD  
 1: GOLD FLASH



PIN	SIGNAL NAME	PIN	SIGNAL NAME
A12	GND	B1	GND
A11	SSRxp2	B2	SSTxp2
A10	SSRxn2	B3	SSTxn2
A9	VBUS	B4	VBUS
A8	SBU1	B5	CC2
A7	Dn1	B6	Dp2
A6	Dp1	B7	Dn2
A5	CC1	B8	SBU2
A4	VBUS	B9	VBUS
A3	SSTxn1	B10	SSRxn1
A2	SSTxp1	B11	SSRxp1
A1	GND	B12	GND

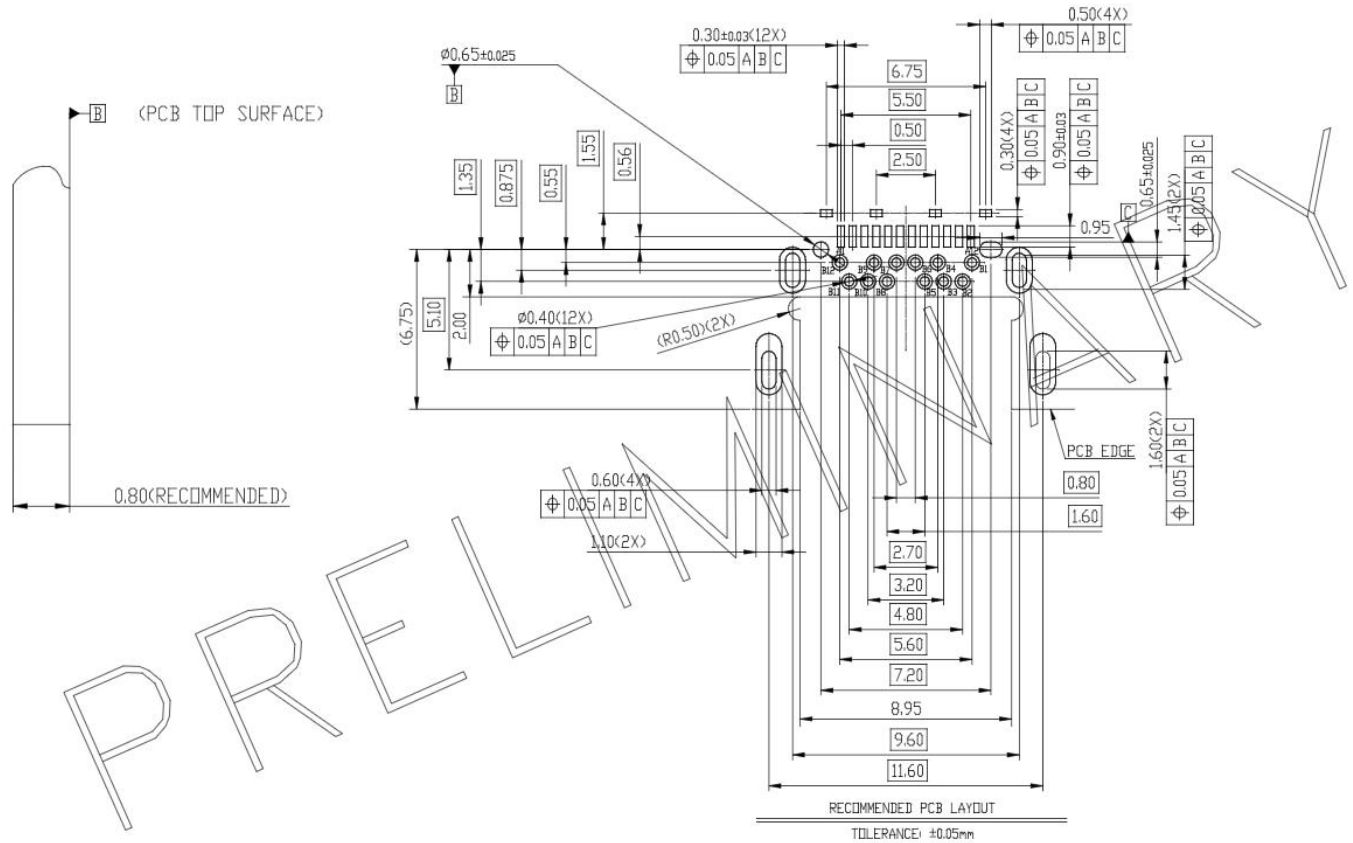
ITEM	DESCRIPTION	Q'TY	MATERIAL	FINISH
⑧	TOP CONTACT	12	C7025	50u" MIN.NICKEL PLATING OVER ALL.
⑦	BOTTOM CONTACT	2	C7025	50u" MIN.TIN PLATING ON SOLDER AREA.
⑥	BOTTOM CONTACT	1	C7025	30u" MIN.Au PLATING ON CONTACT AREA.
⑤	SHIELDING PLATE	1	SUS 301EH	N/A
④	BLOCK	1	LCP E130I	LCP UL 94 V-O COLOR: BLACK.
③	HOUSING	1	LCP E130I	LCP UL 94 V-O COLOR: BLACK.
②	MAIN SHELL	1	SUS 304	N/A
①	TOP SHELL	1	SUS 304	50u" MIN.NICKEL PLATING,NICKEL MUST BE SOLDERABLE.
UT1112*-1070L-7H				

X.± 0.30	X'.±	UNITS	NAME(INTENDED USE)	FOXCONN®
.X± 0.25	.X'±	mm	USB TYPE C; SMT&T/H; CH=0.70mm	FOXCONN INTERCONNECT TECHNOLOGY LIMITED
.XXX± 0.15	.XX'±	MAT'L	PART NO.(INTENDED USE)	CLASS: <input type="checkbox"/> CONFIDENTIAL <input type="checkbox"/> SECRET <input checked="" type="checkbox"/> GENERAL
.XXX± 0.10	.XXX'±	FINISH	APPD: Nick Lin	TITLE: USB TYPE C; SMT&T/H; CH=0.70mm CUSTOMER DRAWING
THESE DRAWINGS AND SPECIFICATIONS ARE THE PROPERTY OF FOXCONN INTERCONNECT TECHNOLOGY LIMITED AND SHALL NOT BE REPRODUCED, COPIED OR USED IN ANY MANNER WITHOUT THE PRIOR WRITTEN CONSENT OF FOXCONN INTERCONNECT TECHNOLOGY LIMITED.			CHKD: Dickie Huang Mac Peng	DWG NO.: 327-0000-****
			DRAW: Carter Yan 07/08'15	SCALE SHEET REV. 1:1 1/3 X11

IDEAS GENERATED DRAWING. DON'T CHANGE BY HAND.

REV.	ECN NO.	APPD.

A  
B  
C  
D  
E



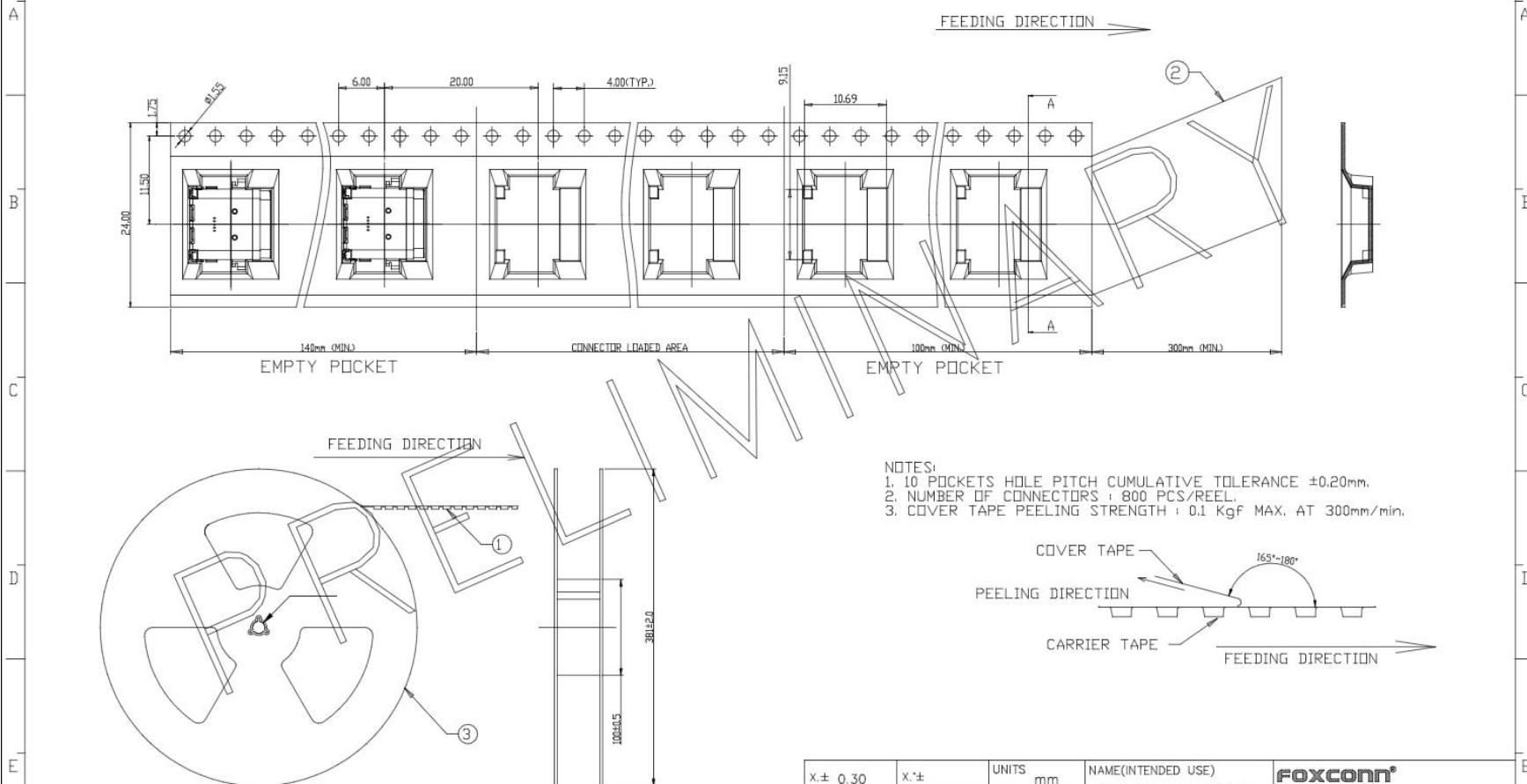
RECOMMENDED PCB LAYOUT  
TOLERANCE: ±0.05mm

X.± 0.30	X'±	UNITS	mm	NAME(INTENDED USE)	<b>FOXCONN®</b> FOXCONN INTERCONNECT TECHNOLOGY LIMITED	
.X± 0.25	.X'±	MAT'L		USB TYPE C;SMT&T/H;CH=0.70mm		
.XX± 0.15	.XX'±			PART NO.(INTENDED USE)	CLASS: <input type="checkbox"/> CONFIDENTIAL <input type="checkbox"/> SECRET <input checked="" type="checkbox"/> GENERAL	
.XXX±0.10	.XXX'±	FINISH		APPD: Nick Lin	TITLE: USB TYPE C;SMT&T/H;CH=0.70mm CUSTOMER DRAWING	
THESE DRAWINGS AND SPECIFICATIONS ARE THE PROPERTY OF FOXCONN INTERCONNECT TECHNOLOGY LIMITED AND SHALL NOT BE REPRODUCED, COPIED OR USED IN ANY MANNER WITHOUT THE PRIOR WRITTEN CONSENT OF FOXCONN INTERCONNECT TECHNOLOGY LIMITED.				Q'TY	DWG NO.: 327-0000-****	
					CHKD: Dick Huang Mac Peng	SCALE SHEET REV. 1:1 2/3 X11
					DRAW: Carter Yan 07/08'15	

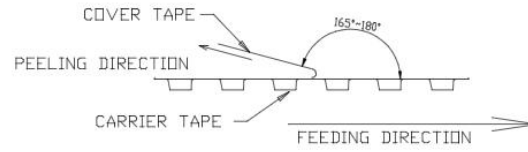
1 2 3 4 5 6 7 8

CAD GENERATED DRAWING. DON'T CHANGE BY HAND.

REV.	ECN NO.	APPD.



- NOTES:  
 1. 10 POCKETS HOLE PITCH CUMULATIVE TOLERANCE ±0.20mm.  
 2. NUMBER OF CONNECTORS : 800 PCS/REEL.  
 3. COVER TAPE PEELING STRENGTH : 0.1 KgF MAX. AT 300mm/min.



③	REEL	POLYSTYRENE	
②	COVER TAPE	POLYESTER	
①	CARRIER TAPE	POLYSTYRENE	
ITEM	DESCRIPTION	MATERIAL	REMARK

X.± 0.30	X.±	UNITS	mm	NAME(INTENDED USE)	<b>FOXCONN</b> FOXCONN INTERCONNECT TECHNOLOGY LIMITED
.X± 0.25	.X'±	MAT'L		USB TYPE C,SMT&T/H,CH=0.70mm	
.XX± 0.15	.XX'±	FINISH		PART NO.(INTENDED USE)	CLASS: <input type="checkbox"/> CONFIDENTIAL <input type="checkbox"/> SECRET <input checked="" type="checkbox"/> GENERAL
XXX±0.10	.XXX'±	Q'TY		APPD: Nick Lin	TITLE: USB TYPE C,SMT&T/H,CH=0.70mm CUSTOMER DRAWING
THESE DRAWINGS AND SPECIFICATIONS ARE THE PROPERTY OF FOXCONN INTERCONNECT TECHNOLOGY LIMITED AND SHALL NOT BE REPRODUCED, COPIED OR USED IN ANY MANNER WITHOUT THE PRIOR WRITTEN CONSENT OF FOXCONN INTERCONNECT TECHNOLOGY LIMITED				CHKD: Dick Huang Mac Peng	DWG NO.: 327-0000-****
				DRAW: Carter Yan 06/25'15	SCALE SHEET REV. 1:2 3/3 X5