

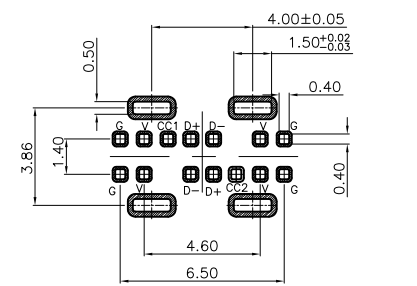
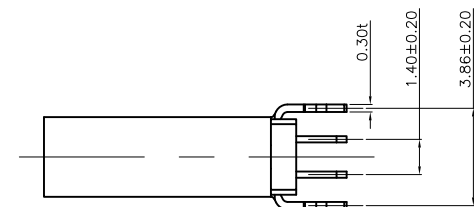
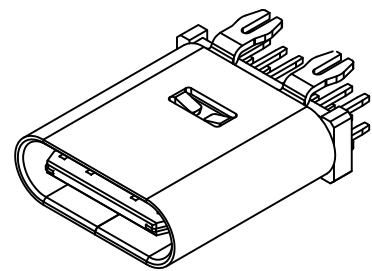
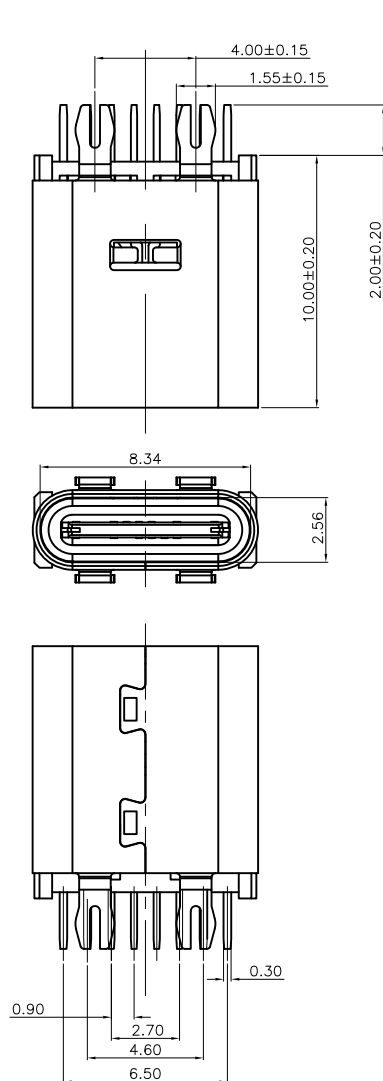
RoHS

MAPX

MODIFICATION

DRW

DATE



- MATERIAL:  
MOLDING: LCP UL94 V-0  
CONTACT: COPPER ALLOY.  
GOLD PLATED ON CONTACT AREA,  $100\mu''$   
Min TIN (LEAD FREE) ON SOLDER AREA,  
SHELL: SUS304-H,  $T=0.30 \pm 0.03$ mm  
 $50\mu''$  NICKEL PLATING OVER ALL.  
SHILD: SUS304-H,  $T=0.12 \pm 0.03$ mm
- MECHANICAL:  
INSERTION: 5~20N.  
EXTRACTION: 8~20N.  
DURABILITY: 5000 CYCLES
- ELECTRICAL:  
CURRENT: 3A MIN FOR VBUS;  
  
VOLTAGE: 5VAC MAX  
WITHSTANDING VOLTAGE: 100V AC.  
CONTACT RESISTANCE: 40m $\Omega$  MAX.  
INSULATION RESISTANCE: 100M $\Omega$  MIN.
- ENVIRONMENTAL  
TEMPERATURE RANGE  $-55^{\circ}\text{C} \sim +85^{\circ}\text{C}$

<p>产品图 PRODUCT CHART DWG</p>				<p>深圳市精拓金电子有限公司 Shenzhen Jing Tuo Jin Electronics Co., Ltd.</p>							
<p>公差一览表 TOLERANCE UNLESS OTHERWISE</p>				单位 UNITS	MM	制图 DRAWING	Z-Y-B	制图料号 PRODUCT PART NO.	918-418K2022Y40000		
X.	$\pm 0.35$	X.	$\pm 5^{\circ}$	比例 SCALE	1:1	审核 CHKD	郭治富	产品名称 PRODUCT NO.	TYPE-C3.1母座立式10.0四鱼叉脚不锈钢 外壳LCP黑胶 14PIN		
.XX	$\pm 0.10$	.XX	$\pm 1^{\circ}$	日期 DATE	2016-09-09	核准 APPD	黄国荣	角法 VIEW		版本 VER	A0
.XXX	$\pm 0.05$	.XXX	$\pm 0.5^{\circ}$								