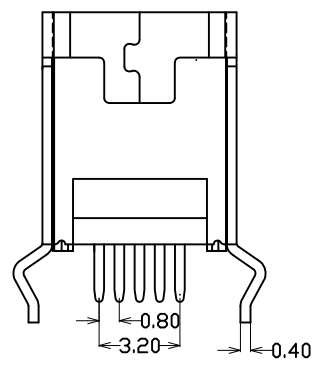
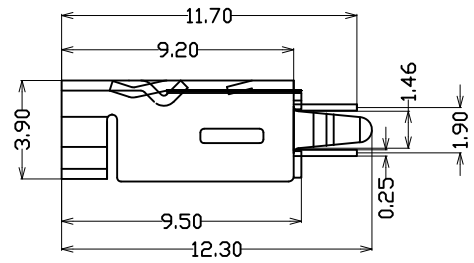
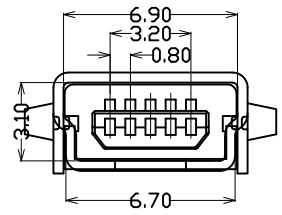
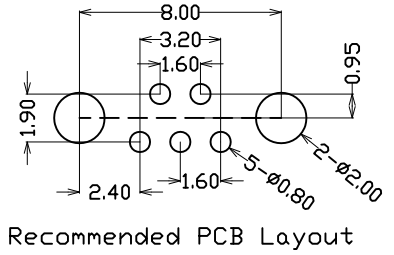
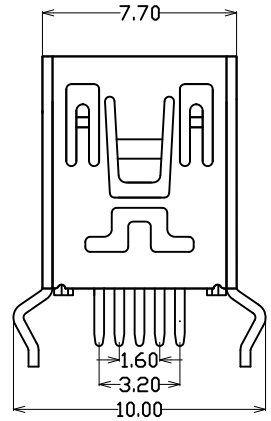


MAPX	MODIFICATION	DATE



规格说明:Specifications:

电气特性:Electrical:

1. 额定电流: Current Rating  
1.0A/contact terminal
2. 额定电压: Voltage Rating  
30V DC
3. 接触阻抗: Contact Resistance  
50 milliohms MAX
4. 耐电压: Dielectric Withstanding Voitage:  
300 V AC AT Sea Level
5. 绝缘阻抗: Insulation Resistance:  
100MEGA ohms MIN

物理性能:Mechanical:

1. 插拔力: Connector Mate and Unmate Force  
Mate force: 3.0kgf (MAX)  
Unmate force: 0.7kgf (MIN)
2. 端子保持力: Terminal Retenion  
0.5kgf (MIN)

原材料: Matorial:

1. 塑胶: Housing:  
Hing Temperature Tnermaplastics,  
UI 94V-0 LCP Black
2. 端子: Contact: Copper Alloy C2680/C5191
3. 外壳: Shell: Copper Alloy C2680

电镀: Finish:

1. 端子: Contact: Plated Gold in Mating Area;  
Tin On Solder Talls
2. 外壳: Shell:  
Nickel Plating

# 深圳市精拓金电子有限公司

产品图 PRODUCT CHART DWG			
公差一览表 TOLERANCE UNLESS DOTHERNSE			
X.	±0.35	X.	±5.°
.X	±0.30	.X	±2.°
.XX	±0.20	.XX	±1.°
.XXX	±0.10	.XXX	±0.5.°

单位 UNITS	MM	制图 DRAWING	Gavin	制图料号 PRODUCT PART NO.	920-462A2021Y10101
比例 SCALE	1:1	审核 CHKD	郭治富	产品名称 PRODUCT NAME	MINI/5P母座180度弯脚铜壳LCP黑胶
日期 DATE	2014-07-19	核准 APPD	黄国荣	角法 VIEW	版本 VER
					AD

由 Autodesk 教育版产品制作

由 Autodesk 教育版产品制作