

A range of high **amperage** flex body, flex body inline and flange mount connectors rated to IP68. These **Delrin housing** multi pin circular connectors are ideal for applications where **dust** and **water ingress** must be **avoided** and ease of connection to high ratings must be achieved.

- **Bayonet 1/4 Turn locking Mechanism**
Secure, quick connector mating and release
- **Screw Turn Locking**
Secure, robust connection and easy to disconnect
- **Positive feedback on locking mechanism**
Confidence that connector is correctly mated and sealed
- **IP68 when mated (for parts with backshell)**
Suitable for a wide range of dust and water borne environments
- **Flex Body, Flex Body Inline and Flange Mount Available**
Complete family of products maintain sealing integrity in all styles
- **Visual alignment features**
Aids the correct mating of connectors
- **2 to 11 Contacts - up to 225A, 1250V AC RMS**
Suitable for mains power to signal applications
- **Crimp termination available**
- **300+ AMP contacts upon request**

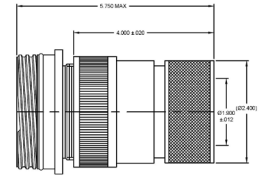
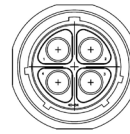


Screw Locking -
Male & Female



PXP9050

- Flex Body, Inline Body & Flange Mount available
- Plug and Socket available
- IP68 Rated
- Up to 1250V AC RMS



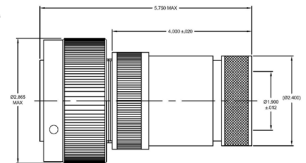
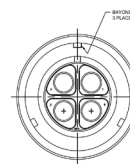
Part Number	Contacts	Contact Type	Contact Size	Body Type	Backshell
PXP9050/02/P/1	2	Plug	4/0	Flex	Yes
PXP9051/02/S/1	2	Socket	4/0	Inline	Yes
PXP9052/02/S	2	Socket	4/0	Flange Mount	-
PXP9050/04/P/1	4	Plug	1/0	Flex	Yes
PXP9051/04/S/1	4	Socket	1/0	Inline	Yes
PXP9052/04/S	4	Socket	1/0	Flange Mount	-
PXP9050/06/P/1	6	Plug	1/0	Flex	Yes
PXP9051/06/S/1	6	Socket	1/0	Inline	Yes
PXP9052/06/S	6	Socket	1/0	Flange Mount	-
PXP9050/08/P/1	8	Plug	4x 4 & 16AWG 4x	Flex	Yes
PXP9051/08/S/1	8	Socket	4x 4 & 16AWG 4x	Inline	Yes
PXP9052/08/S	8	Socket	4x 4 & 16AWG 4x	Flange Mount	-
PXP9050/11/P/1	11	Plug	10x 4 & 16AWG 1x	Flex	Yes
PXP9051/11/S/1	11	Socket	10x 4 & 16AWG 1x	Inline	Yes
PXP9052/11/S	11	Socket	10x 4 & 16AWG 1x	Flange Mount	-

Bayonet Quarter Turning Lock -
Male & Female



PXP9010

- Flex Body, Inline Body & Flange Mount available
- Plug and Socket available
- IP68 Rated
- Up to 1250V AC RMS
- Robust, with Quick Disconnect System



Part Number	Contacts	Contact Type	Contact Size	Body Type	Backshell
PXP9010/02/P/1	2	Plug	4/0	Flex	Yes
PXP9011/02/S/1	2	Socket	4/0	Inline	Yes
PXP9012/02/S	2	Socket	4/0	Flange Mount	-
PXP9010/04/P/1	4	Plug	1/0	Flex	Yes
PXP9011/04/S/1	4	Socket	1/0	Inline	Yes
PXP9012/04/S	4	Socket	1/0	Flange Mount	-
PXP9010/06/P/1	6	Plug	1/0	Flex	Yes
PXP9011/06/S/1	6	Socket	1/0	Inline	Yes
PXP9012/06/S	6	Socket	1/0	Flange Mount	-
PXP9010/08/P/1	8	Plug	4x 4 & 16AWG 4x	Flex	Yes
PXP9011/08/S/1	8	Socket	4x 4 & 16AWG 4x	Inline	Yes
PXP9012/08/S	8	Socket	4x 4 & 16AWG 4x	Flange Mount	-
PXP9010/11/P/1	11	Plug	10x 4 & 16AWG 1x	Flex	Yes
PXP9011/11/S/1	11	Socket	10x 4 & 16AWG 1x	Inline	Yes
PXP9012/11/S	11	Socket	10x 4 & 16AWG 1x	Flange Mount	-

Adapter



PXP9080

○ Adapter

*crimping tool required - contact us for more details.

Part Number	Description
PXP9080	1/0 Plug and Socket Adapter to accommodate 6-8AWG conductors

Tooling



PXP9081 PXP9082 PXP9083

○ Tooling:
 Pneumatic Tool Press
 Tooling Locator
 Tool Die Set

Part Number	Description
PXP9081	Pneumatic Tool Press
PXP9082	Tooling Locator
PXP9083	Tool Die Set

BUCCANEER FOR POWER
9000 Series High Power Buccaneer

Specifications & Part No System



Electrical:

No Contacts:	2, 4, 6, 8, 11
Current Rating:	
2 Contact	225A
4 Contact	150A
6 Contact	150A
8 Contact	13A, 80A
11 Contact	80A, 13A
Voltage Rating (AC):	1250V AC RMS +700V AC RMS
Operating Temp. Range:	-55°C to +125°C
Approvals:	Standard Available

Mechanical:

Locking Mechanism:	Bayonet Quarter Turn Rapid Locking Screw Lock
Sealing:	IP68
Contact Accommodation:	
2 Contact	4/0 (107.2 mm ²)
4 Contact	1/0 (53.5 mm ²)
6 Contact	1/0 (107.2 mm ²)
8 Contact	4x 4 (107.2 mm ²) & 16 AWG (1.5 mm ²) 4x
11 Contact	10x 4 (107.2 mm ²) & 16 AWG (1.5 mm ²) 1x
Cable Acceptance:	Back Shell Inner Diameter 48.26 mm
Terminations:	Crimp Terminals

Materials:

Plastic:

Body:	Delrin
Colour:	Black
Contacts:	Copper Alloy Silver Plating
Flammability Rating:	UL94 V-0

Dimensions:	
Diameter: (over coupling ring)	72.77mm (bayonet), 80.67mm (screw lock)

RoHS

Compliant

PXP90XX	X	/	XX	/	X	/	X
Series Designation	Series / Body Style		Contact of Contacts		Contact Type		Backshell
PXP901X = Bayonet Quarter Turn	0 = Flex		02		P = Plug		N/A = No Backshell
PXP905X = Screw Locking	1 = Inline		04		S = Socket		1 = 4" Screw on Backshell
	2 = Flange Mount		06				
			08				
			11				

Examples

PXP9050/02/P/1 = Screw Locking Flex Body Connector, 4 inch Backshell, 2 Contacts, Plug

PXP9012/02/S = Bayonet Locking Flange Mount Connector, No Backshell, 2 Contacts, Socket