

Smart Hybrid Mounter SM485P

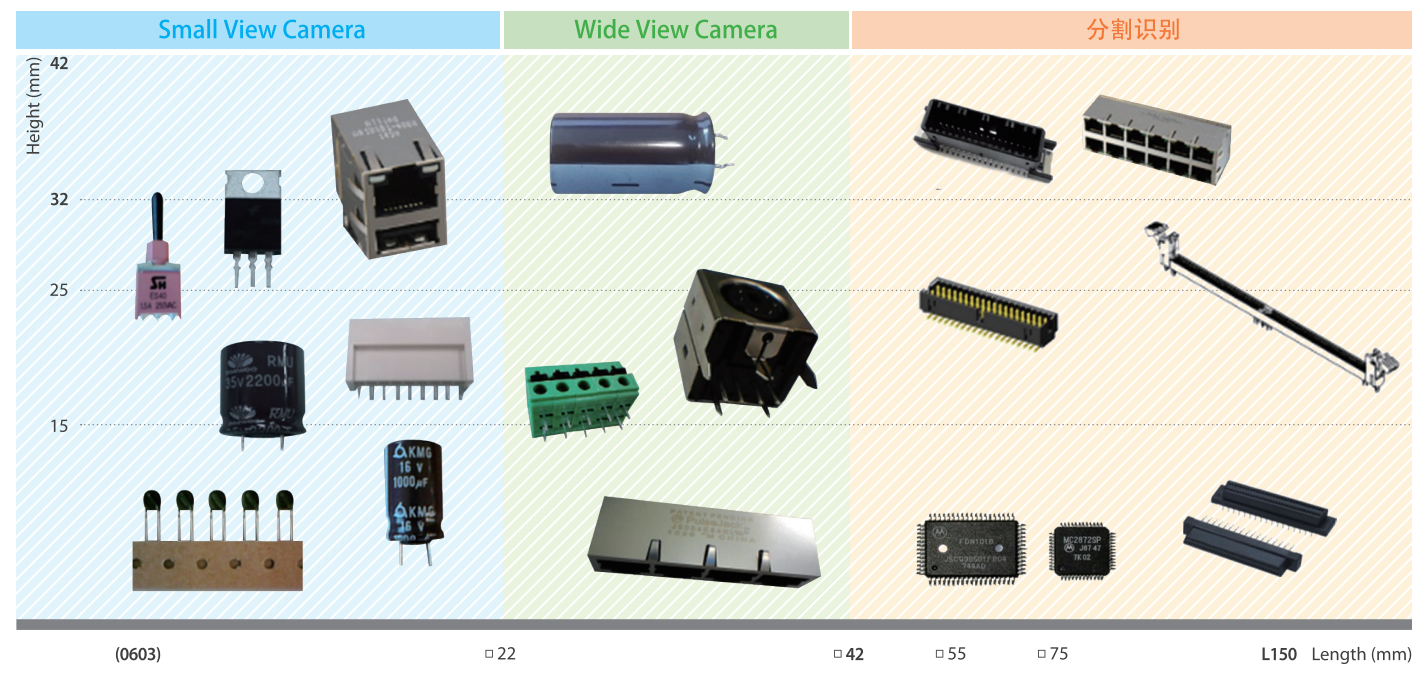


广州煌牌自动设备有限公司
一站式SMT设备供应商

Specifications		
Alignment	4 Small Fix Camera + 1 Wide Fix Camera	
The number of spindles	4 spindles x 1 Gantry	
Placement Speed	12,000 CPH (Optimum)	
Placement Accuracy	Chip	±50 μm @ Cpk≥ 1.0
	IC	±30 μm @ Cpk≥ 1.0
Component Range	Small Fix Camera	0603 ~ □22 mm
	Wide Fix Camera	~ □55 mm, L150 mm
	Max. Height	32 mm (Standard), 42 mm (Special Order *)
PCB Size (mm)	Min.	L50 x W40
	Max.	~ L460 x W400 (Standard) ~ L460 x W280 (Option), ~ L460 x W340 (Option), ~ L610 x W460 (Option)
PCB Thickness (mm)	0.38 ~ 4.2	
Feeder Capacity (以8mm为基准)	120 ea/112 ea (Docking Cart)	
Utility	Power	3 phase AC 200±18V / 208±19V / 220±20V / 240±22V / 380±25V / 415±28V (50/60Hz) Max. 3.5 kVA
	Air	5.0 ~ 7.0 kgf/cm ² 50 Nℓ/min (真空泵)
Weight	Approx. 1,600 kg	
External Dimension (mm)	L1,650 x D1,679 x H1,993	

*属于特别定制规格, 请联系销售部门

Component Range & Feeder Solutions



煌牌自动设备有限公司

公司地址: 广州市番禺区大龙街富怡路451号之四
工厂地址: 广东省广州市南沙区标准工业园9栋3楼
电话: 020-39977619/629 售后热线: 020-29063515

煌牌智能科技香港公司

公司地址: 香港九龍長沙灣永明街1號.恒昌工廠大廈6樓A05室
电话: 852-36124970 传真: 852-36124971



Smart Hybrid Mounter SM485P

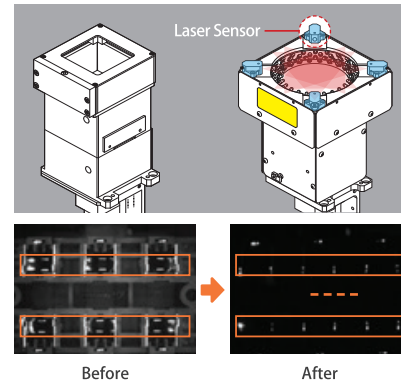
SM485P是一种多功能Hybrid Mounter, 除了SMD元器件以外, 还能快速可靠地贴装各种插入型元器件、异型元器件。



Reliable Insertion & Verification Solutions

LASER Light

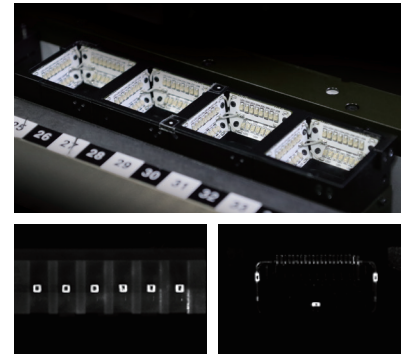
通过Wide Camera上四向激光照明, 增强了插入型元件的个别Lead Pin识别



Laser Light For Small Camera (Option)

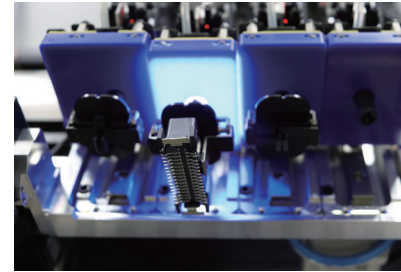
可通过Small Camera用激光照明, 识别中小型插入型元件的Lead Pin

- 可识别Max. □22mm每个引脚的同时进行检查&贴装



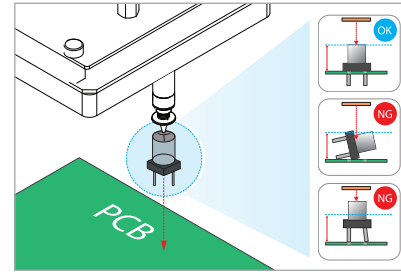
Back Light

能准确识别散射、半透明的元器件
(Ex: 屏蔽罩(Shield can, Lens, Tape等))



Height Sensor (Option)

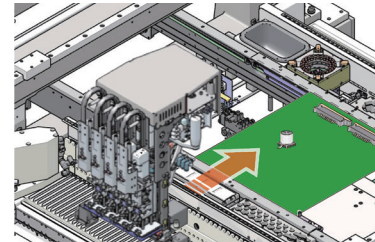
贴装元器件后, 利用Sensor测量高度, 可实时检测出元器件漏插/翘起/插入不良



High Productivity & Special Process Solutions

4 Precision Spindle Head (P4 Head)

正面标配装载4个Camera, 可同时识别及贴装4个中小型元器件



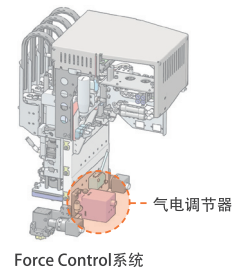
Dual Fix Camera (Option)

在背面装载Dual Fix Camera时, 能针对两个中大型元器件同时进行识别贴装

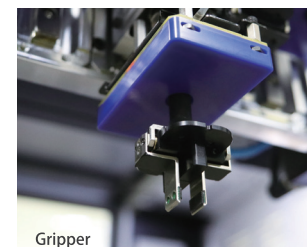


对于特殊工艺/异型元器件的解决方案

- 设定插入/贴装压力(Force Control): 0.5 ~ 50N
- 大型/Long元器件MFOV(分割识别): 2/3/4分割
- 支持用于插入型元器件的Gripper: ~ Max. H42mm



Force Control系统



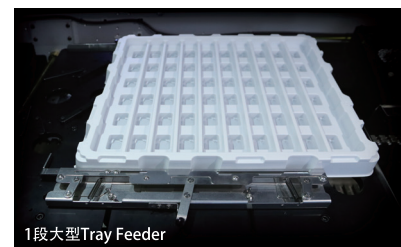
Gripper

大型元器件供应装置

可供应中大型元器件(Tray Size: 420 x 350mm)



多段大型 Tray Feeder

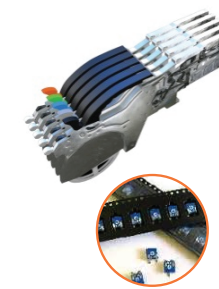


1段大型Tray Feeder

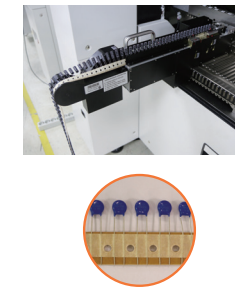
Various Feeders

Tape Reel Feeder

Tape Feeder
(SMD, 异型元器件)



Radial Feeder
(插入型元器件)



Axial Feeder
(插入型元器件)



Tray Feeder

多层Tray Feeder

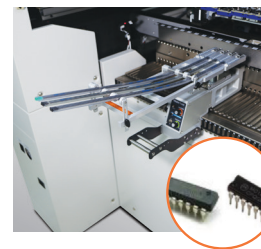


1层Tray Feeder

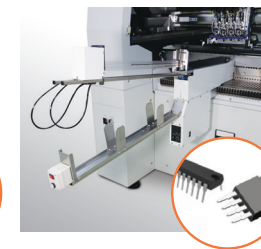


Stick Feeder

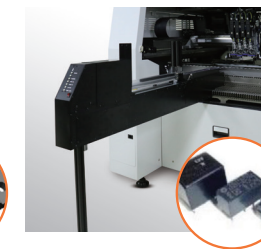
Multi Stick Feeder
(Vibration)



Stack Stick Feeder
(Vibration)

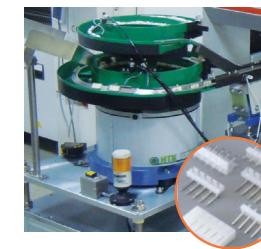


Stack Stick Feeder
(Pusher + Air)

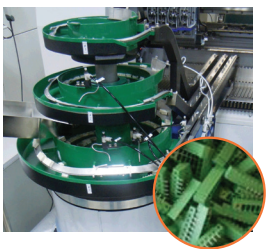


Bulk Feeder (Bowl Feeder)

2层Bowl Feeder



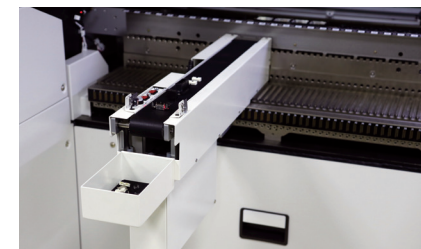
3层Bowl Feeder



Accessories

Reject Conveyor

是一种能够把大型元器件适时排放到设备外部的回收装置



Removable Dump Box

用于供料器底座的装卸式Dump Box



Offline Setup Unit

是一种为手插式供应装置供应电压与气压的Feeder Slot型配置(setup)设备

可对应的Feeder
• Stack Stick Feeder (Vib)
• Radial/Axial Feeder



可装载的最大供应装置数量

分类	Tape Reel Feeder		Stick Feeder			Bowl Feeder			Tray Feeder		
	Tape (8mm)	Radial/Axial	Multi Stick (Vibration)	Stack Stick (Vibration)	Stack Stick (None Vibration)	1层	2层	3层	Multi	Side	1层
FRONT	60	10	6	8	7	2	-	-	-	-	2
REAR	60	10	6	8	7	2	1	1	1	1	2