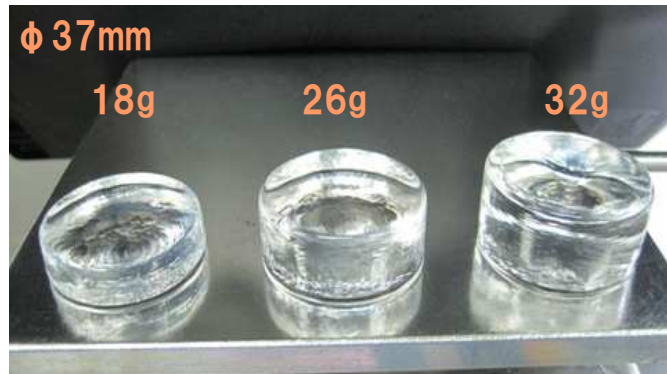


# Boron Oxide (B<sub>2</sub>O<sub>3</sub>) 氧化硼



Please contact us for other sizes.  
如需其他尺寸，请联系我们。

## ■ Analysis分析

Elements	Actual(ppm)	Specification (ppm)
Al	<0.03	≦0.1
Ca	<0.03	≦0.4
Cr	<0.01	≦0.01
Cu	<0.02	≦0.05
Fe	<0.03	≦0.2
Mg	<0.05	≦0.1
Mn	<0.01	≦0.05
Pb	<0.01	≦0.05
Si	<0.1	≦0.2
Zn	<0.01	≦0.01

## ■ Size

	Min	Max
Dia.	φ10mm	φ195mm
Weight	1g	1000g

## ■ Moisture

Grade	Specification(ppm)
A	1200 ± 100
B	500 ± 50
C	300 ± 50
D	120 ± 10
E	≦ 100