

DATA SHEET



Document No.: DAT00452 Ver.:004

1. 1-S40A... -1 Technical data:

| 技术参数 (Technical data) | 单位 (Unit) | 1-S40A...-1 | | | | | | | |
|---|-------------|--|------|------|------|-----------------|------|------|------|
| | | D1 | | | | C3 | | | |
| 精度等级 (OIML R60) | | 50,100,200,500 | | | | 50,100,200,500 | | | |
| 额定载荷 Emax (Max. capacity) | Kg t | 1, 2, 3, 5 | | | | 1, 2, 3, 5 | | | |
| 最小检定分度值 (vmin) | % of Cn | 0.0286 | | | | 0.0120 | | | |
| 灵敏度 (Sensitivity) | mV/V | 2 | | | | | | | |
| 灵敏度误差范围 (Tolerance on sensitivity) | % | ±0.25 | | | | | | | |
| 温度对灵敏度影响 (TC Span) | % of Cn/10K | ±0.0500 | | | | ±0.0140 | | | |
| 温度对零点影响 (TC Zero) | % of Cn/10K | ±0.0400 | | | | ±0.0170 | | | |
| 非线性误差 (Non-linearity) | % of Cn | ±0.0500 | | | | ±0.0180 | | | |
| 滞后误差 (Hysteresis error) | % of Cn | ±0.0500 | | | | ±0.0170 | | | |
| 零点平衡 (Zero balance) | mV/V | 0.01 | | | | | | | |
| 蠕变及蠕变恢复 (30mins) (Creep、MDLR) | %/30min | ±0.0500 | | | | ±0.0245/±0.0166 | | | |
| 输入电阻 (Input resistance) | Ω | 350 | | | | | | | |
| 输出电阻 (Output resistance) | Ω | 350 ± 1.5 | | | | | | | |
| 参考电压 (Reference excitation voltage) | V | 5 | | | | | | | |
| 最大工作电压 (Maximum excitation voltage) | V | 12 | | | | | | | |
| 绝缘电阻 (Insulation resistance) | G Ω/100V | >5 | | | | | | | |
| 额定温度范围 (Nominal temperature range) | ℃ | -10~+40 | | | | | | | |
| 工作温度范围 (Operating temperature range) | ℃ | -30~+70 | | | | | | | |
| 存储温度范围 (Storage temperature range) | ℃ | -50~+85 | | | | | | | |
| 安全承载 (Safe load limit) | % of Emax | 150 | | | | | | | |
| 极限承载 (Breaking load) | % of Emax | 300 | | | | | | | |
| 额定载荷 Emax (Max. capacity) | kg | 50 | 100 | 200 | 500 | 1000 | 2000 | 3000 | 5000 |
| 最大载荷下变形量 (deflection at Emax, ±15%) | % of Emax | 0.15 | 0.15 | 0.15 | 0.15 | 0.25 | 0.38 | 0.38 | 0.46 |
| 重量 (Weight, approx) | kg | 0.6 | 0.7 | 0.7 | 1.1 | 1.1 | 1.7 | 1.7 | 2.2 |
| 防护等级 (protection class acc. to EN60529) | | IP68 (test condition 1m water column/100h) | | | | | | | |
| 材料 (Material) | | 弹性体 (Measuring body) 不锈钢 (Stainless steel) 电缆连接 (Cable entrance) 不锈钢 (Stainless steel) / 橡胶 (Viton) 电缆线 (Cable sheath) PVC | | | | | | | |

DATA SHEET

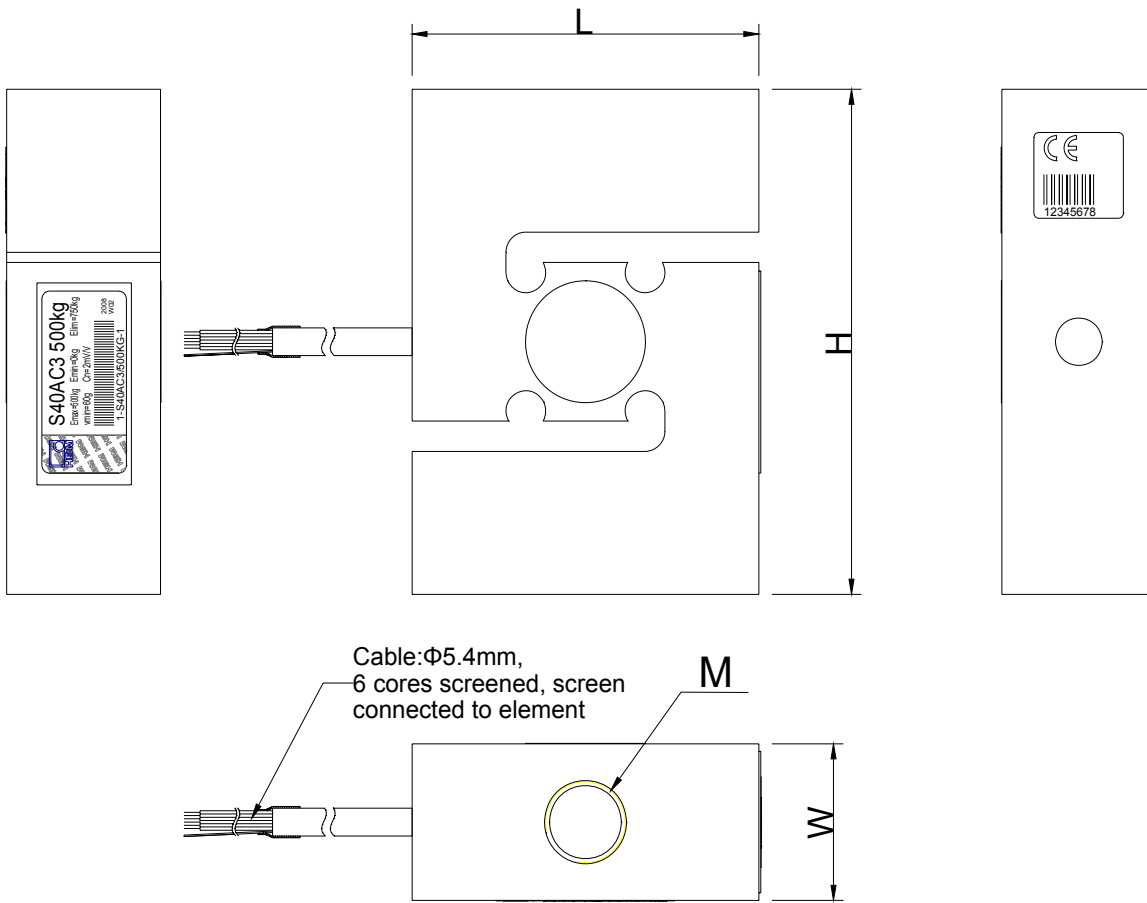


Document No. : DAT00452 Ver. :004

2. 1-S40A---1 Part Number Description

| Part Number | Description | Detailed Description |
|-------------------|--------------|-----------------------------------|
| 1-S40A/50KG-1 | S40A/50kg | LOAD CELL S40A/50kg, D1, 3m cable |
| 1-S40A/100KG-1 | S40A/100kg | LOAD CELL S40A/100kg, D1 3m cable |
| 1-S40A/200KG-1 | S40A/200kg | LOAD CELL S40A/200kg, D1 3m cable |
| 1-S40A/500KG-1 | S40A/500kg | LOAD CELL S40A/500kg, D1 3m cable |
| 1-S40A/1T-1 | S40A/1t | LOAD CELL S40A/1t, D1 3m cable |
| 1-S40A/2T-1 | S40A/2t | LOAD CELL S40A/2t, D1 3m cable |
| 1-S40A/3T-1 | S40A/3t | LOAD CELL S40A/3t, D1 3m cable |
| 1-S40A/5T-1 | S40A/5T | LOAD CELL S40A/5T, D1 3m cable |
| 1-S40AC3/50KG-1 | S40AC3/50kg | LOAD CELL S40AC3/50kg 3m cable |
| 1-S40AC3/100KG-1 | S40AC3/100kg | LOAD CELL S40AC3/100kg 3m cable |
| 1-S40AC3/200KG-1 | S40AC3/200kg | LOAD CELL S40AC3/200kg 3m cable |
| 1-S40AC3/500KG-1 | S40AC3/500kg | LOAD CELL S40AC3/500kg 3m cable |
| 1-S40AC3/1T-1 | S40AC3/1t | LOAD CELL S40AC3/1t 3m cable |
| 1-S40AC3/2T-1 | S40AC3/2t | LOAD CELL S40AC3/2t 3m cable |
| 1-S40AC3/3T-1 | S40AC3/3t | LOAD CELL S40AC3/3t 3m cable |
| 1-S40AC3/5T-1 | S40AC3/5T | LOAD CELL S40AC3/5T 3m cable |
| 1-S40AC3/50KGD-1 | S40AC3/50kg | LOAD CELL S40AC3/50kg, 6m cable |
| 1-S40AC3/100KGD-1 | S40AC3/100kg | LOAD CELL S40AC3/100kg, 6m cable |
| 1-S40AC3/200KGD-1 | S40AC3/200kg | LOAD CELL S40AC3/200kg, 6m cable |
| 1-S40AC3/500KGD-1 | S40AC3/500kg | LOAD CELL S40AC3/500kg, 6m cable |
| 1-S40AC3/1TD-1 | S40AC3/1t | LOAD CELL S40AC3/1t, 6m cable |
| 1-S40AC3/2TD-1 | S40AC3/2t | LOAD CELL S40AC3/2t, 6m cable |
| 1-S40AC3/3TD-1 | S40AC3/3t | LOAD CELL S40AC3/3t, 6m cable |
| 1-S40AC3/5TD-1 | S40AC3/5T | LOAD CELL S40AC3/5T, 6m cable |

3. 1-S40A...-1 Mounting dimension:



Cable:

Shielded 6-core round cable(7/0.16mm) with PVC-jacket

Wiring code:

| | |
|------------------------|---------------------------|
| Excitation voltage+ : | blue |
| Excitation voltage - : | black |
| Signal+: | white |
| Signal -: | red |
| Sen+ | green |
| Sen- | grey |
| Shield: | blank, connect to element |

| Capacity | L(mm) | H(mm) | W(mm) | M |
|--------------|-------|-------|-------|-------|
| 50kg, | 50.8 | 63.5 | 25.4 | M8 |
| 100kg,200kg, | 50.8 | 76.2 | 25.4 | M12 |
| 500kg | 57.2 | 87.3 | 31 | M12 |
| 1t | 57.2 | 87.3 | 31 | M12 |
| 2t | 69.8 | 100 | 36.5 | M24×2 |
| 3t | 69.8 | 100 | 36.5 | M24×2 |
| 5t | 76.2 | 114.3 | 36.5 | M24×2 |

DATA SHEET



Document No. : DAT00452 Ver. :004

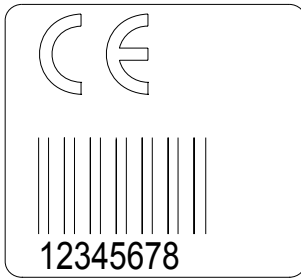
4. Label:

4.1 Type label

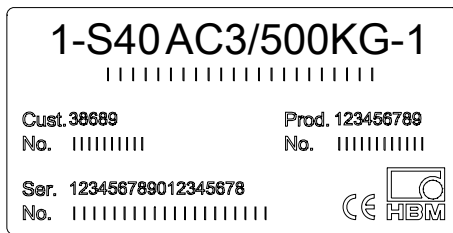


| Part Number | Type | Emax | Emin | Elim | Cn | vmin | TC |
|-------------------|--------------|-------|------|-------|-------|------|------|
| 1-S40A/50KG-1 | S40A 50kg | 50kg | 0kg | 75kg | 2mV/V | 14.3 | 7544 |
| 1-S40A/100KG-1 | S40A 100kg | 100kg | 0kg | 150kg | 2mV/V | 28.6 | 7544 |
| 1-S40A/200KG-1 | S40A 200kg | 200kg | 0kg | 300kg | 2mV/V | 57.2 | 7544 |
| 1-S40A/500KG-1 | S40A 500kg | 500kg | 0kg | 750kg | 2mV/V | 143 | 7544 |
| 1-S40A/1T-1 | S40A 1t | 1t | 0kg | 1.5t | 2mV/V | 286 | 7544 |
| 1-S40A/2T-1 | S40A 2t | 2t | 0kg | 3t | 2mV/V | 572 | 7544 |
| 1-S40A/3T-1 | S40A 3t | 3t | 0kg | 4.5t | 2mV/V | 858 | 7544 |
| 1-S40A/5T-1 | S40A 5t | 5t | 0kg | 7.5t | 2mV/V | 1430 | 7544 |
| 1-S40AC3/50KG-1 | S40AC3 50kg | 50kg | 0kg | 75kg | 2mV/V | 6 | 7544 |
| 1-S40AC3/100KG-1 | S40AC3 100kg | 100kg | 0kg | 150kg | 2mV/V | 12 | 7544 |
| 1-S40AC3/200KG-1 | S40AC3 200kg | 200kg | 0kg | 300kg | 2mV/V | 24 | 7544 |
| 1-S40AC3/500KG-1 | S40AC3 500kg | 500kg | 0kg | 750kg | 2mV/V | 60 | 7544 |
| 1-S40AC3/1T-1 | S40AC3 1t | 1t | 0kg | 1.5t | 2mV/V | 120 | 7544 |
| 1-S40AC3/2T-1 | S40AC3 2t | 2t | 0kg | 3t | 2mV/V | 240 | 7544 |
| 1-S40AC3/3T-1 | S40AC3 3t | 3t | 0kg | 4.5t | 2mV/V | 360 | 7544 |
| 1-S40AC3/5T-1 | S40AC3 5t | 5t | 0kg | 7.5t | 2mV/V | 600 | 7544 |
| 1-S40AC3/50KGD-1 | S40AC3 50kg | 50kg | 0kg | 75kg | 2mV/V | 6 | 7544 |
| 1-S40AC3/100KGD-1 | S40AC3 100kg | 100kg | 0kg | 150kg | 2mV/V | 12 | 7544 |
| 1-S40AC3/200KGD-1 | S40AC3 200kg | 200kg | 0kg | 300kg | 2mV/V | 24 | 7544 |
| 1-S40AC3/500KGD-1 | S40AC3 500kg | 500kg | 0kg | 750kg | 2mV/V | 60 | 7544 |
| 1-S40AC3/1TD-1 | S40AC3 1t | 1t | 0kg | 1.5t | 2mV/V | 120 | 7544 |
| 1-S40AC3/2TD-1 | S40AC3 2t | 2t | 0kg | 3t | 2mV/V | 240 | 7544 |
| 1-S40AC3/3TD-1 | S40AC3 3t | 3t | 0kg | 4.5t | 2mV/V | 360 | 7544 |
| 1-S40AC3/5TD-1 | S40AC3 5t | 5t | 0kg | 7.5t | 2mV/V | 600 | 7544 |

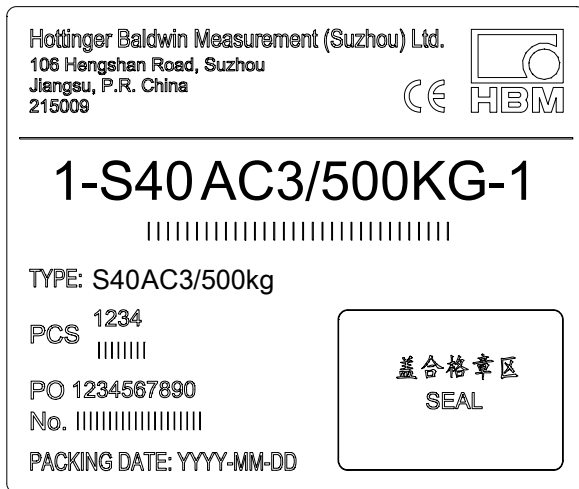
4.2 Serial number label



4.3 Individual package label



4.4 Outer package label



DATA SHEET



Document No. : DAT00452 Ver. :004

| Type | Part number | Type | Part number |
|--------------|-------------------|--------------|------------------|
| S40A/50kg | 1-S40A/50KG-1 | S40AC3/50kg | 1-S40AC3/50KG-1 |
| S40A/100kg | 1-S40A/100KG-1 | S40AC3/100kg | 1-S40AC3/100KG-1 |
| S40A/200kg | 1-S40A/200KG-1 | S40AC3/200kg | 1-S40AC3/200KG-1 |
| S40A/500kg | 1-S40A/500KG-1 | S40AC3/500kg | 1-S40AC3/500KG-1 |
| S40A/1t | 1-S40A/1T-1 | S40AC3/1t | 1-S40AC3/1T-1 |
| S40A/2t | 1-S40A/2T-1 | S40AC3/2t | 1-S40AC3/2T-1 |
| S40A/3t | 1-S40A/3T-1 | S40AC3/3t | 1-S40AC3/3T-1 |
| S40A/5t | 1-S40A/5T-1 | S40AC3/5t | 1-S40AC3/5T-1 |
| S40AC3/50kg | 1-S40AC3/50KGD-1 | | |
| S40AC3/100kg | 1-S40AC3/100KGD-1 | | |
| S40AC3/200kg | 1-S40AC3/200KGD-1 | | |
| S40AC3/500kg | 1-S40AC3/500KGD-1 | | |
| S40AC3/1t | 1-S40AC3/1TD-1 | | |
| S40AC3/2t | 1-S40AC3/2TD-1 | | |
| S40AC3/3t | 1-S40AC3/3TD-1 | | |
| S40AC3/5t | 1-S40AC3/5TD-1 | | |

The load cell and test report should together be packed into individual package box.

The test report should include the test data: Zero signal, sensitivity, input and output.

编制:

审核:

批准: