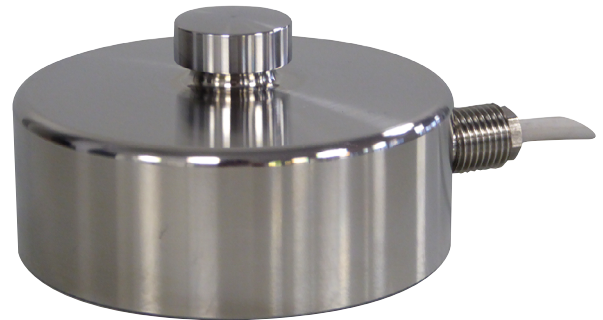


# R10X

250 kg ... 100 t



- Made of stainless steel, sealed IP68
- Accuracy up to  $\pm 0.05\%$
- Spherical load button
- Ideally suited for tank or silo weighing applications
- Easy to clean
- High temperature version (HT:  $+125^{\circ}\text{C}$ ) on request
- Optional connector output



Version câble - Cable version

Version connecteur - Connector version

M12 Connector

Plaque de charge (option) - Load Plate (option)

Capacité Nominal Rated capacity (C.N.)	Ø A	B	Ø D	E	R	F	G	H	Ø I	Ø L	M	N	Poids Weight
250 kg ... 15 t	82	44	22	12	90	30	3°	3	82	23	15	3	1.5 kg
30 t	126	54	35	14	160	55	3°	3	89	36	15	3	4 kg
50 t S-Size	126	54	35	14	160	55	3°	3	89	36	25	3	4 kg
50, 100 t	164	80	60	20	340	/	0°	0	89	62	25	4	10 kg

Dimensions in mm



Signal at FS:  $2 \text{ mV/V} \pm 0.2\%$   
 Combined error:  $\pm 0.05\% \text{FS}$  (1000 d)  
 Impedance (in/out):  $700 \Omega \pm 20 / 700 \Omega \pm 5$   
 Compensated temperature range:  $-10 \dots +50^{\circ}\text{C}$   
 Overload limit:  $150\% E_{\text{max}}$  (max.:  $300\%$ )  
 Cable/length: 4 shielded wires / 10 m  
 Warranty: 3 years

+ Excit.: Red | + Sign.: Green | - Sign.: White | - Excit.: Black

P/N	Designation	Cn	C.E.	DC
430625	LOAD CELL R10X 250 kg TR	250 kg	$< \pm 0.1\%$	R2
430626	LOAD CELL R10X 500 kg TR	500 kg	$< \pm 0.1\%$	R2
430627	LOAD CELL R10X 1t TR	1 t	$< \pm 0.1\%$	R2
430628	LOAD CELL R10X 2t5 TR	2.5 t	$< \pm 0.1\%$	R2
430629	LOAD CELL R10X 5t TR	5 t	$< \pm 0.1\%$	R2
430630	LOAD CELL R10X 10t TR	10 t	$< \pm 0.1\%$	R2
430631	LOAD CELL R10X 15t TR	15 t	$< \pm 0.1\%$	R2
430632	LOAD CELL R10X 30t TR	30 t	$< \pm 0.1\%$	R2
430633	LOAD CELL R10X 50t S-Size TR	50 t	$< \pm 0.1\%$	R2
632228	LOAD CELL R10X 50t	50 t	$< \pm 0.1\%$	R2
632229	LOAD CELL R10X 100t	100 t	$< \pm 0.1\%$	R2
<b>Options:</b>				
850397	HIGH RESISTANCE PAINTING			R1
SP/OL	OPTIONAL HIGH TEMPERATURE FOR R10X - Service temperature range $-20 \dots +125^{\circ}\text{C}$			R2
850272	"SI" TEST FOR LOAD CELLS ATEX & IECEx - $\text{Ex ia IIC T6 Ga}$ , Ex ia IIIC T80°C Da, IP6X, $-20^{\circ}\text{C} < T_a < +60^{\circ}\text{C}$ [zone 0/20]			R2
850273	"n" TEST FOR LOAD CELLS ATEX & IECEx - $\text{Ex nA IIC T6 Gc}$ , $-20^{\circ}\text{C} < T_a < +60^{\circ}\text{C}$ [zone 2]			R2
850274	"DUST" MARKING FOR LOAD CELL ATEX & IECEx - $\text{Ex ia IIC T125}^{\circ}\text{C Da}$ , IP6X, $-20^{\circ}\text{C} < T_a < +60^{\circ}\text{C}$ [zones 20]			R2
<b>Related products:</b>				
	SILOKIT-R			
	SILOSAFE-R & RX			
	PLATES KIT			

FS: rated capacity / v min = minimal interval (according to cert. OIML R601) / C.E. = Combined error in % of Cn / DC = Code put back