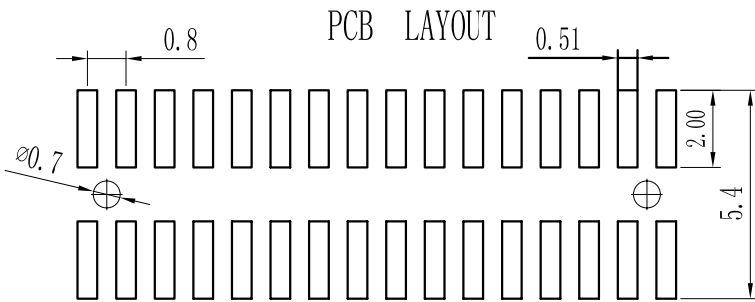
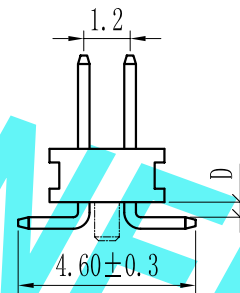
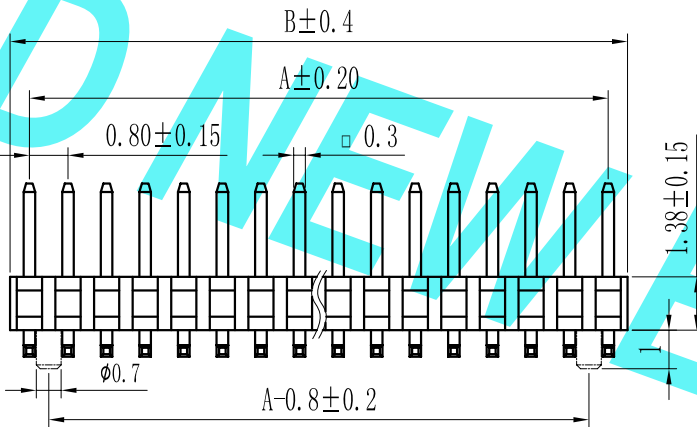
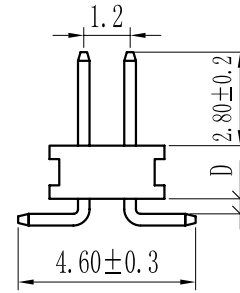
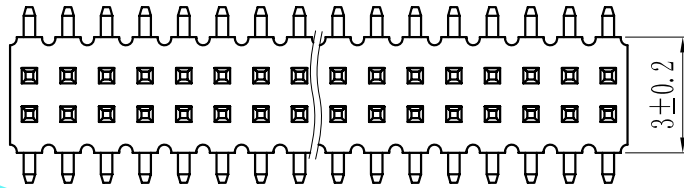


ROHS

For reference only

Pin数	尺寸A	尺寸B
2X2	0.8	1.6
2X3	1.6	2.4
2X4	2.4	3.2
2X5	3.2	4.0
2X6	4.0	4.8
2X7	4.8	5.6
2X8	5.6	6.4
2X9	6.4	7.2
2X10	7.2	8.0
2X11	8.0	8.8
2X12	8.8	9.6
2X13	9.6	10.4
2X14	10.4	11.2
2X15	11.2	12.0
2X16	12.0	12.8
2X17	12.8	13.6
2X18	13.6	14.4
2X19	14.4	15.2
2X20	15.2	16.0
2X21	16.0	16.8
2X22	16.8	17.6
2X23	17.6	18.4
2X24	18.4	19.2
2X25	19.2	20.0
2X26	20.0	20.8
2X27	20.8	21.6
2X28	21.6	22.4
2X29	22.4	23.2
2X30	23.2	24.0
2X31	24.0	24.8
2X32	24.8	25.6
2X33	25.6	26.4
2X34	26.4	27.2
2X35	27.2	28.0
2X36	28.0	28.8
2X37	28.8	29.6
2X38	29.6	30.4
2X39	30.4	31.2
2X40	31.2	32.0
2X41	32.0	32.8
2X42	32.8	33.6
2X43	33.6	34.4
2X44	34.4	35.2
2X45	35.2	36.0
2X46	36.0	36.8
2X47	36.8	37.6
2X48	37.6	38.4
2X49	38.4	39.2
2X50	39.2	40.0



Specification:
 Current Rating : 0.75AMP
 Temperature Range : -40°Cto+105°C
 Contact Resistance : 30mΩ Max
 Insulation Resistance : 1000MΩ Min
 Withstanding Voltage : AC 500V
 Material:
 Insulator : Polyester (UL94V-0)
 Standard:PA6T/LCP
 Contact: Brass
 Plating : Au or Sn Over 50u" Ni

P 08 9S-XXX X X-XX-X-XXX
 ① ② ③ ④ ⑤ ⑥ ⑦ ⑧ ⑨

① Series No: P=Pin Header F=Female Header B=Box Header E=Ejector Header	② Pitch: 08=0.80 10=1.00 12=1.27 20=2.00 25=2.54 39=3.96 50=5.08	③ Tail&Mounting Style: 9D=Right Angle DIP Type 9S=Straight SMT Type 0D=Strait DIP Type 0S=lorizontal SMT Type	④ No. of Pins: Single Row 101=1*1Pin 102=1*2Pin 140=1*40pin	⑤ Insulator Color: A:Black B:Brown C:Red D:Orange E:Yellow F:Green G:Blue H:Violet J:Gray K:White P:Light Blue
⑥ Material Type: A-PBT B-PA46 C-PA6T D-PA9T E-LCP	⑦ Plating Type: 0*-Sn-Au 1*-Ni 2*-Sn 3*-Matte-Tin 5*-Au 0A-Sn-Au 1u" 0F-Sn-Au 10u" 5A-Au 1u" 0B-Sn-Au 2u" 0G-Sn-Au 15u" 5B-Au 2u" 0C-Sn-Au 3u" 0H-Sn-Au 30u" 5C-Au 3u" 0D-Sn-Au 4u" 0I-Sn-Au 40u" 5D-Au 4u" 0E-Sn-Au 5u" 0J-Sn-Au 50u" 5J-Au 50u"	⑧ RollS Request: 0:No Request 1:RoHS 2:HF(Halogen Free)	⑨ Customer Code	

REV.	REVISION RECORD	DATE	UNIT: MM	GENERAL TOLERANCES		SCALE: 1:1	NAME	DATE
				LINER	ANGLES	APPROVED		
				0.0±0.25	X° REF±6°	DESIGNER		
				0.00±0.15	X° ±3°	DRAWN		
			SIZE: A4	0.000±0.08	X° X'±2°			

东莞市康导新能源科技有限公司
 DONGGUANG KD NEW ENERGY TECHNOLOGY CO.,LTD.
 Web: www.dgconne.com Tel: 0769-85337633
 Email: 2850175986@qq.com Fax: 0769-85392827

TITLE:
 0.8*1.2 Pin Header, Single Plastic,
 Dual Row, SMT Type

PART. NO: KDPH-0001
DWG. NO: ENDE0001
REV: AO SHEET: 1/1