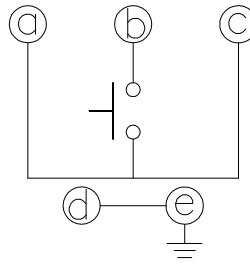
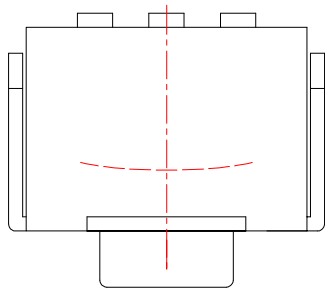


ROHS



Circuit Diagram

NOTES:

1.ELECTCAL CHARACTERISTICS:

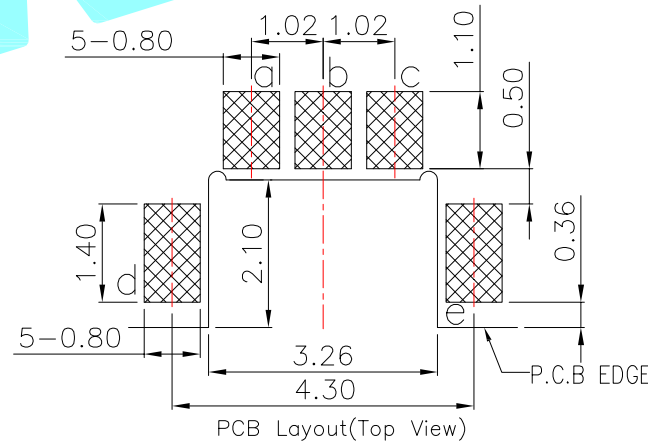
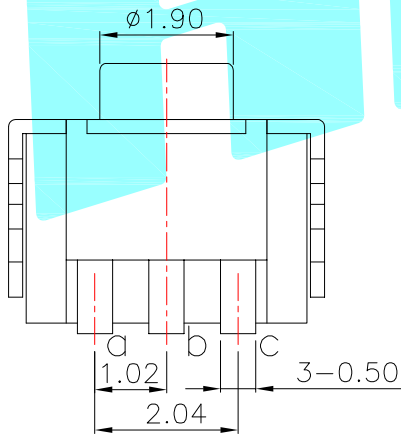
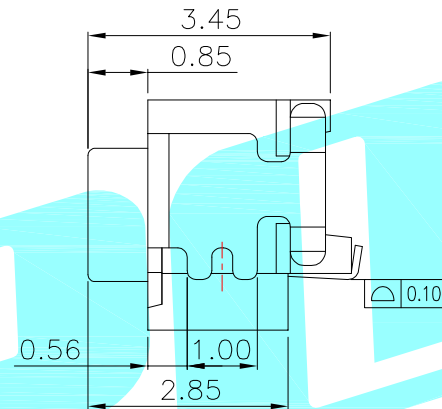
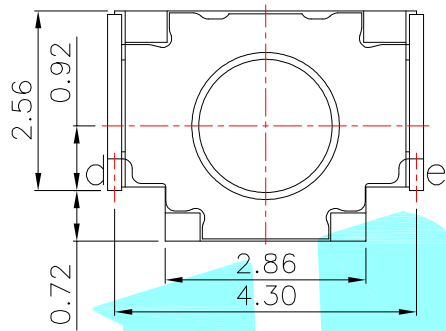
- 1-1.CONTACT CURRENT RATING: 50mA.
- 1-2.CONTACT VOLTAGE RATING: 12V. DC.
- 1-3.CONTACT RESISTANCE: 100mΩ MAX.
- 1-4.DIELECTRIC WITHSTANDING VOLTAGE: 250V. AC.
- 1-5.INSULATION RESISTANCE: 100 MΩ MIN.

2.MECHANICAL CHARACTERISTICS:

- 2-1.DURABILITY:100,000 CYCLES.
- 2-2.TRAVEL:0.45±0.20mm.

3.ENVIENMENT CHARACTERISTICS:

- 3-1.OPERATING TEMPERATURE: -40°C~+85°C
- 3-2.HUMIDTY: 45-85% RH.



NO.1	
PART NO	vigor
1	100±30

NO.2-NO.3	
PART NO	NOTE
01~99	SERIAL NUMBER

⑤	Terminal	—	3	Phosphor Bronze	Plating silver	—
④	Contact	—	1	SUS	Plating silver	—
③	Base	—	1	PPA	Black	—
②	Cover	—	1	Phosphor Bronze	Plating silver	—
①	Knob	—	1	Silica gel	Black	—
ITEM	PART NAME	TER'NO.	QTY.	MATERIAL	FINISHING	REMARK

APPROVALS		DATE		 ELECTRONICS CO.,LTD		
DRAWN	LIUCAN	2021.6.1				
CHECKED				TITLE: TACT SWITCHES		
APPROVALS				PART NO. K2-1852SP-A□SW-□□		
TOLERANCES ARE			30~以上: ±0.30	ANGLE	UNIT: mm	SCALE: 1:1
			10~30: ±0.20			
			5~10: ±0.15			
			~ 5: ±0.10			
				±2'	DRAWING NO.	
				PROJ:		
				SHEET 1 OF 1		

ECN NO.	REV.	DATE.	NEW	DESCRIPTION.	CHANGE.	CHECK.	APPRO.
---------	------	-------	-----	--------------	---------	--------	--------