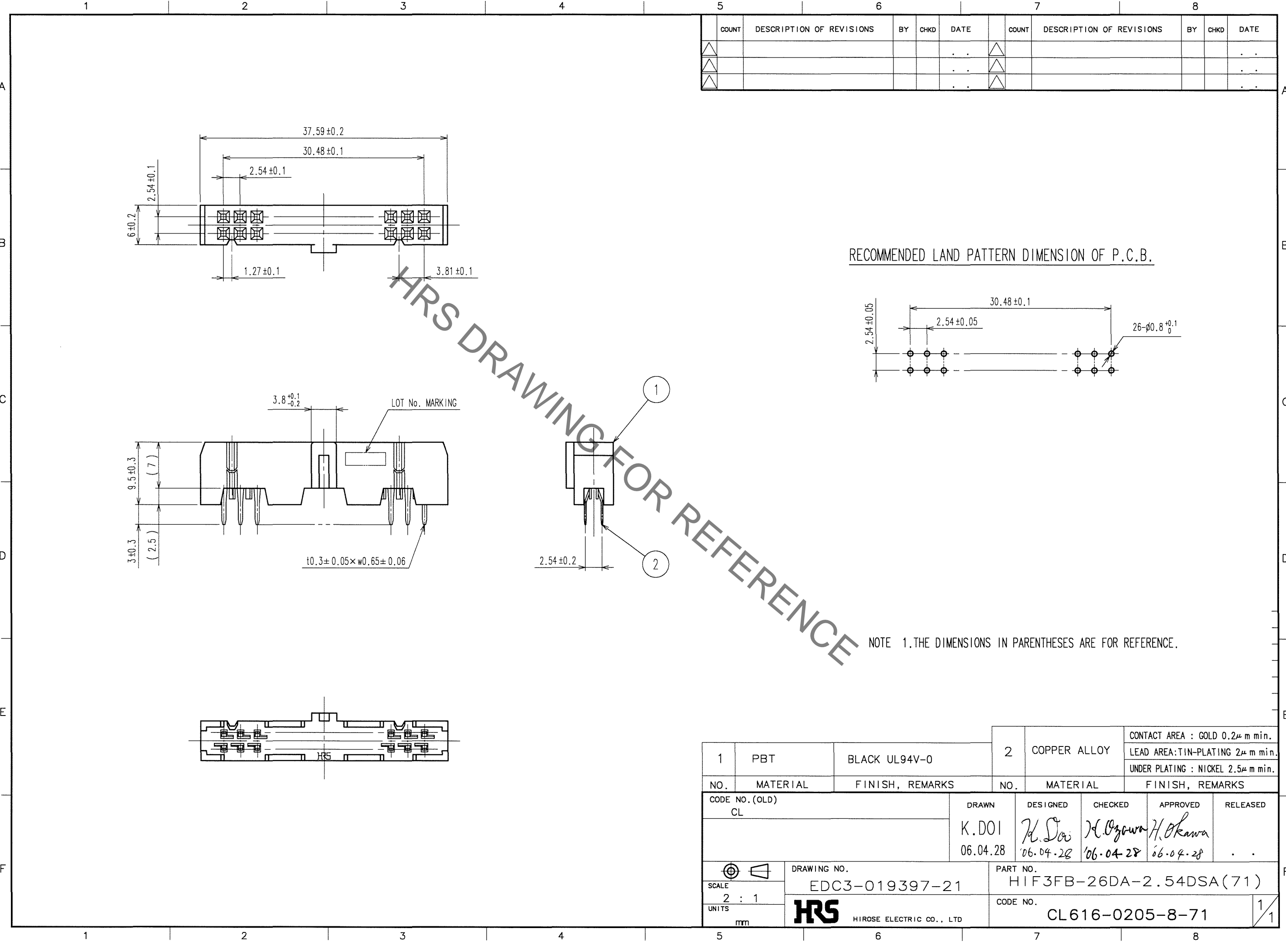
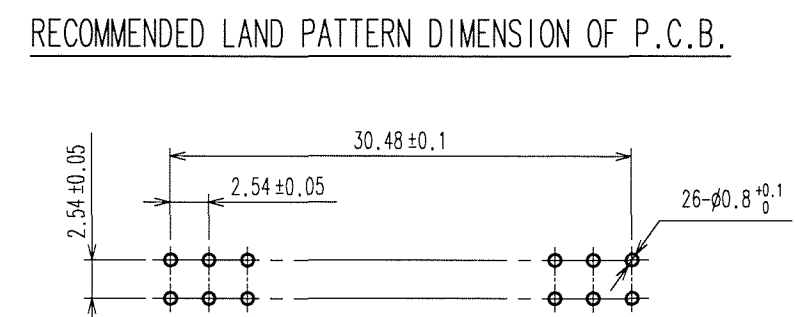


Feb.1.2022 Copyright 2022 HIROSE ELECTRIC CO., LTD. All Rights Reserved.
In case of consideration for using Automotive equipment / device which demand high reliability, kindly contact our sales window correspondents.



COUNT	DESCRIPTION OF REVISIONS	BY	CHKD	DATE	COUNT	DESCRIPTION OF REVISIONS	BY	CHKD	DATE
△				..	△				..
△				..	△				..
△				..	△				..

HRS DRAWING FOR REFERENCE



NOTE 1. THE DIMENSIONS IN PARENTHESES ARE FOR REFERENCE.

TO

1	PBT	BLACK UL94V-0	2	COPPER ALLOY	CONTACT AREA : GOLD 0.2μ m min. LEAD AREA: TIN-PLATING 2μ m min. UNDER PLATING : NICKEL 2.5μ m min.
NO.	MATERIAL	FINISH, REMARKS	NO.	MATERIAL	FINISH, REMARKS
CODE NO. (OLD) CL			DRAWN	DESIGNED	CHECKED
			K.DOI 06.04.28	H. Sai '06.04.28	H. Ozawa '06.04.28
DRAWING NO. EDC3-019397-21			PART NO. HIF3FB-26DA-2.54DSA(71)		
UNITS mm			CODE NO. CL616-0205-8-71		
HRS HIROSE ELECTRIC CO., LTD			1/1		