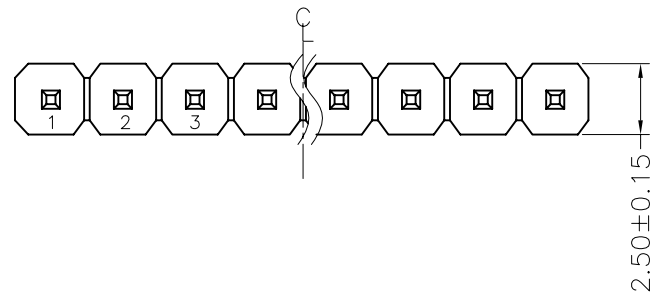


REV.	ECN. NO.	APPD.
A		

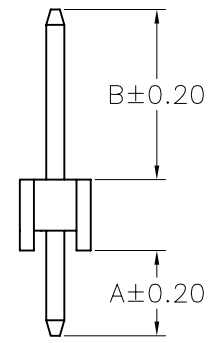
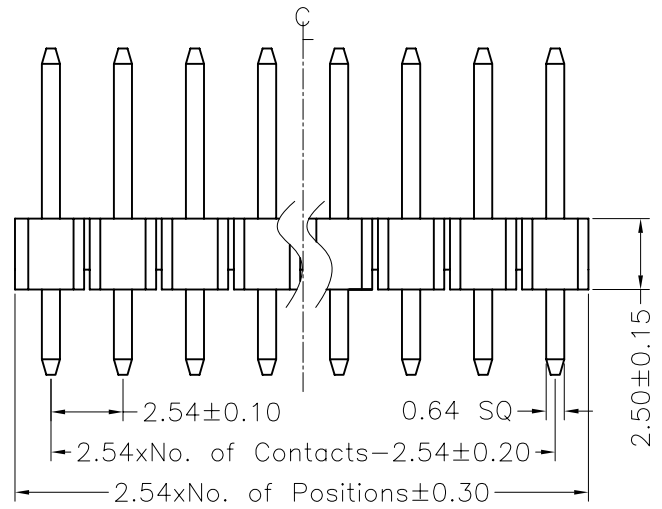
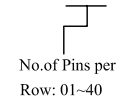
NOTES:
 Current Rating:3.0AMP
 Contact Resistance:20mΩ max
 Withstand Voltage:500V AC/DC
 Insulation Resistance:1000MΩ min
 Operation Temperature:-40°C to +105°C

Contact Material:Brass
 Contact plating:Au or Sn Over Ni
 Insulator Material:PBT or PA6T+30%GF(UL94V-0)

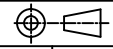
Recommended P.C.B Layout(Top Side)
 (PCB BOARD TOLERANCE±0.05)



MTP125-11XXS1



Dimension antitheses list		
ITEM	A	B
Standard	3.00	6.00
Alternate		

X. ± 0.30	X.° ± 5°	UNITS mm	NAME(INTENDED USE)	MINTRON CO.,LTD.						
.X ± 0.20	.X° ± 2°				MAT'L	PART NO.(INTENDED USE)				
.XX ± 0.10	.XX° ± 1°				FINISH		TITLE: MTP125-11XXS1			
.XXX ± 0.05	.XXX° ± 0.5°				Q'TY		DWG NO.:			
PIN HEADER CONNECTOR			APPD: SUNNY	 <table border="1"> <tr> <td>SCALE</td> <td>SHEET</td> <td>REV.</td> </tr> <tr> <td>1/1</td> <td>1/1</td> <td>A</td> </tr> </table>	SCALE	SHEET	REV.	1/1	1/1	A
SCALE	SHEET	REV.								
1/1	1/1	A								
			CHKD: LISA							
			DR: ZOE 2006-11-28							