

ATLANTIC VERSION TERMINATOR INTERFACE ADAPTER	PART NUMBER	REVISION	DESCRIPTION	FEED TYPE	
	2266152-1	D	FINE CRIMP HEIGHT ADJUST	MECHANICAL	SUPERSEDED BY 5-2151493-1
	2266152-2	D	FINE CRIMP HEIGHT ADJUST	PNEUMATIC	SUPERSEDED BY 5-2151493-2
	2266152-5	D	FINE CRIMP HEIGHT ADJUST	SERVO LATCH PLATE	OBSOLETE
	2266152-6	D	NON CRIMP HEIGHT ADJUST	SERVO LATCH PLATE	OBSOLETE
	2266152-7	D	FINE CRIMP HEIGHT ADJUST	NONE	OBSOLETE
	3-2266152-2	D	FINE CRIMP HEIGHT ADJUST	DOUBLE ACTING PNEUMATIC WITH SENSORS	OBSOLETE
	7-2266152-7	A	CRIMP TOOLING KIT	-	

APPLICATOR DATA		
CRIMP	SIZE	TYPE
WIRE	1.40 mm [.055]	F
INSUL	1.83 mm [.072]	O
APPLICATOR INSTRUCTIONS 408-10389		

TERMINAL DATA: TE TERMINAL		TE TE CRIMP SPECIFICATION	
TERMINAL NAME: MICRO QUADOCK SYSTEM			
WIRE STRIP LENGTH 3.05-3.35 mm [1.20-.132 IN]		INSULATION DIAMETER RANGE Ø1.15-1.60 mm [0.045-.063 IN]	
TERMINAL APPLICATION SPECIFICATION 114-18021			
TERMINALS APPLIED			

GROUP 1		GROUP 2	
TE TERMINAL	TE TERMINAL	TE TERMINAL	TE TERMINAL
928999-1	5-928918-2	968220-1	1703296-1
928999-5	5-928918-1	968220-5	1703296-5
928999-6	6-928918-1	968220-6	1534116-1
5-928999-1	6-928918-2	5-968220-1	1534116-2
968893-1	6-928918-3	5-968220-5	5-1534116-1
928918-1	1394702-1	5-968220-6	5-1534116-2
928918-2	1394702-2		1241918-1
1-928918-1	5-1394702-1		
1-928918-2	5-1394702-2		
5-928999-5	5-928999-6		
6-928999-5			

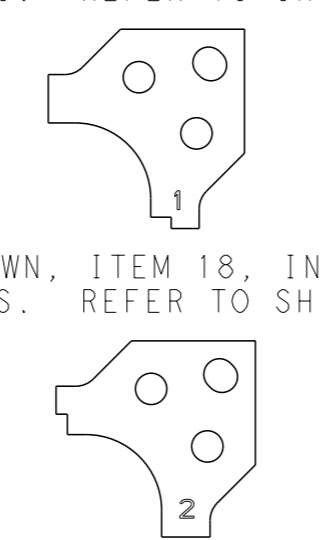
WIRE SIZE	CRIMP HEIGHT mm [INCH]	CRIMP HEIGHT REFERENCE SETTING
0.50mm2	0.86 +/- 0.03 [0.034 +/- .001]	5.0
0.35mm2	0.76 +/- 0.03 [0.030 +/- .001]	6.1
0.25mm2	0.72 +/- 0.03 [0.028 +/- .001]	6.6

- 1. RECOMMENDED SPARE PARTS
- 2. GREASE BEARING SURFACES LIGHTLY
- 3. LUBRICATE DAILY PER THE APPLICATOR INSTRUCTION SHEET SUPPLIED WITH THE APPLICATOR.
- 4. APPLICATOR SPECIFIC DATA TO BE ENTERED INTO BLANK MEMORY CHIP AT ASSEMBLY. SEE BELOW FOR PART NUMBER:
MECHANICAL FEED WITH "SMART APPLICATOR" CONVERSION: 8-2266152-4
PNEUMATIC FEED WITH "SMART APPLICATOR" CONVERSION: 8-2266152-4
SERVO FEED WITH "FINE CRIMP HEIGHT ADJUST": 8-2266152-5
SERVO FEED WITH "NON-CRIMP HEIGHT ADJUST": 8-2266152-6
- 5. ADJUSTMENT OF THE STRIPPER MAY BE REQUIRED WHEN MOVING THE APPLICATOR BETWEEN BENCH AND LEADMAKER APPLICATIONS.
- 6. APPLY PART NUMBER 1-23419-5 LOCTITE TO THREADS OF ITEMS 50, 62
APPLY PART NUMBER 2-23419-6 LOCTITE TO THREADS OF ITEMS 242.
FOR -6 ONLY APPLY PART NUMBER 1-23419-5 LOCTITE TO THREADS OF ITEM 37.
- 7. GREASE THREADS, GROOVE AND O-RING ON ITEMS 35 & 252.
- 8. MAGNET, ITEM 166 MUST BE ORIENTED CORRECTLY IN ORDER TO PROPERLY ACTUATE THE COUNTER.
- 9. CRIMP HEIGHT REFERENCE SETTING WAS THE SETTING USED WHEN THE APPLICATOR WAS QUALIFIED AT THE FACTORY. ADJUSTMENT MAY BE NECESSARY WHEN RUNNING APPLICATOR IN THE FIELD.
- 10. SPARE FEED CAM STORAGE LOCATION REFER TO INSTRUCTION SHEET FOR ADDITIONAL INFORMATION.

AMP 4805 REV 31MAR2000

***WARNING**
ON INSTALLATION, SET WIRE DISC, ITEM 40 TO LARGEST WIRE SIZE SETTING. USE OF SETTINGS BELOW MINIMUM REQUIRED CRIMP HEIGHT SETTING WILL CAUSE DAMAGE TO CRIMP TOOLING.

- 1. TO CONVERT THE APPLICATOR TO A NON-CARRIER CUTTING STYLE, REMOVE ITEM 13 AND ATTACH TO THE LOCATION ON THE BACK SIDE OF THE HOUSING. REFER TO INSTRUCTION SHEET FOR ADDITIONAL INFORMATION.
- 2. WHEN ASSEMBLING -6 NON-CRIMP HEIGHT ADJUST APPLICATOR USE SHIM PACK 2119957-2 TO ACHIEVE A NOMINAL SHIM HEIGHT OF 1.00mm.
- 3. REFER TO APPLICATION SPECIFICATION, 114-18021, PAGE 8, NOTE 3 CONCERNING CRIMPING 0.50mm2 WIRE.
- 4. POSITION THE HOLD DOWN, ITEM 18, IN ORIENTATION 1 FOR GROUP 1 TERMINALS. REFER TO SHEET 2.
- 5. POSITION THE HOLD DOWN, ITEM 18, IN ORIENTATION 2 FOR GROUP 2 TERMINALS. REFER TO SHEET 2.
- 6. THIS APPLICATOR IS SPECIFIC FOR USE IN A STRIPPER SEAL TERMINATING UNIT.
- 7. THIS APPLICATOR IS EQUIPPED WITH THE DOUBLE ACTING FEED WITH SENSORS AND IS APPLICATION SPECIFIC. IT DOES NOT REQUIRE ITEMS 49 & 248.



-77	-32	-7	-6	-5	-2	-1	PART NO	DESCRIPTION	ITEM NO
-	-	-	-	-	-	-	1803430-1	AIR FEED MODULE	290
-	-	-	-	-	-	-	2119957-2	APPLICATOR SHIM PACK	260
-	-	-	-	-	-	-	8-21084-0	O-RING, .676 ID, .070 DIA. MAT.	252
-	-	-	-	-	-	-	2119640-1	PUSH ROD, AIR FEED	250
-	-	-	-	-	-	-	2079988-1	BUSHING, LCH5-12, MISUMI	249
-	-	-	-	-	-	-	2119641-1	FEED CAM, AIR FEED	248
-	-	-	-	-	-	-	2119798-1	DETENT PIN	247
-	-	-	-	-	-	-	1-22279-3	SPRING, COMPRESSION	246
-	-	-	-	-	-	-	2119758-1	RAM, AMP STYLE, SIDE FEED, NON-ADJ.	245
-	-	-	-	-	-	-	2119082-8	CAM, SNAIL, INSULATION ADJUSTMENT	244
-	-	-	-	-	-	-	2079764-1	WASHER, WAVE SPRING, CREST-TO-CREST	243
-	-	-	-	-	-	-	2119083-1	RETAINER, INSULATION DIAL	242
-	-	-	-	-	-	-	7-18023-7	SCR, SKT HD CAP M3 X 4.0	241
-	-	-	-	-	-	-	2168400-6	SHCS, LOW HEAD, RoHS, M5 X 16	240

ATLANTIC VERSION
Shown on sheets 1 of 4 & 2 of 4
(Pacific version shown on sheets 3 of 4 & 4 of 4)

SET UP GAUGE	LOC	DIST	REVISIONS			
2119599-1	A	66	#	DATE	BY	APPV
			C	190C2014	KH	LG
			C1	14SEP2015	YY	UG
			D	17NOV2017	MEH	JDG
			D1	12APR2018	LG	JD

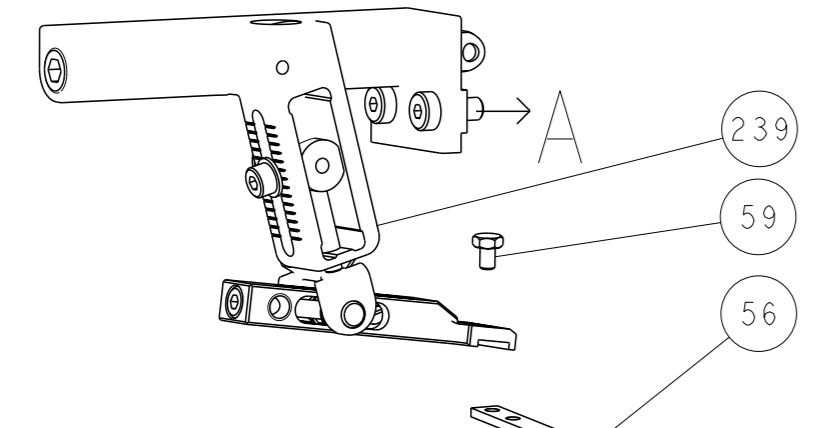
#	DATE	BY	APPV	DESCRIPTION	ITEM NO
-	-	-	-	MECHANICAL FEED ASSEMBLY	239
-	-	-	-	AIR FEED MODULE	238
-	-	-	-	TAG, IDENTIFICATION	213
-	-	-	-	SPACER, FEEDER	198
-	-	-	-	PIN, SLOTTED SPRING 3.0 X 20.0	177
-	-	-	-	SPRING, COMPRESSION	176
-	-	-	-	GUIDE PIN, HOLDDOWN	175
-	-	-	-	GUIDE PIN, HOLDDOWN	174
-	-	-	-	RING, RETAIN, EXTERN, 3/16 CRESCENT	172
-	-	-	-	MAGNET, RARE EARTH HIGH ENERGY	166
-	-	-	-	COUNTER, MAGNETIC	164
-	-	-	-	SPRING, FEED FINGER	163
-	-	-	-	PIN, RETAIN, GRVD, 3/16 X .854	137
-	-	-	-	HOLDER, FEED FINGER, AF	136
-	-	-	-	MEMORY CHIP, PROGRAMMED	135
-	-	-	-	SERVO FEED LATCH ASM	133
-	-	-	-	WASHER, FLAT, REG M4	119
-	-	-	-	FEED FINGER ASSEMBLY, SF	117
-	-	-	-	FRONT STRIP GUIDE	96
-	-	-	-	SCR, SKT HD CAP, RoHS, M3 X 8.0	95
-	-	-	-	SPACER, CRIMPER	82
-	-	-	-	SPACER	81
-	-	-	-	SCR, SKT HD CAP, RoHS, M3 X 8.0	79
-	-	-	-	FENCE	78
-	-	-	-	DOCUMENTATION PACKAGE	71
-	-	-	-	DEPRESSOR, WIRE	70
-	-	-	-	WASHER, SPACER	69
-	-	-	-	TAG, IDENTIFICATION	67
-	-	-	-	SCREW, DRIVE, RH, RoHS, 2 x .188	66
-	-	-	-	LIMITER, ADJUSTMENT BOLT	63
-	-	-	-	SCR, SET, SOC, CONE PNT, M3 X 4.0	62
-	-	-	-	SCR, SET, FLT PNT, M5 X 20.0	61
-	-	-	-	SCR, BHSC, RoHS (M4 X 8)	60
-	-	-	-	SCR, HEX HD CAP, M4 X 6.0	59
-	-	-	-	PAWL, FEED	56
-	-	-	-	SHCS, LOW HEAD, RoHS, M4 X 12	54
-	-	-	-	SCR, SKT HD CAP, RoHS, M4 X 8.0	53
-	-	-	-	NUT, HEX, REG, RoHS, M3.5	52
-	-	-	-	STRIPPER, SIDE FEED	51
-	-	-	-	STANDOFF, HOLD-DOWN	50
-	-	-	-	SCR, SKT HD CAP M4 X 6.0	49
-	-	-	-	FEED CAM, PRE FEED	48
-	-	-	-	FEED CAM, POST FEED	47
-	-	-	-	APPLICATOR BASIC ASSEMBLY, SF	46
-	-	-	-	RAM, AMP STYLE, SIDE FEED	44
-	-	-	-	SCR, BHSC, RoHS (M8 X 25)	41
-	-	-	-	DISC, NUMBERED FA WIRE ADJUSTMENT	40
-	-	-	-	APPLICATOR SHIM PACK	39
-	-	-	-	RAM WASHER, PRECISION	38
-	-	-	-	FA HEAD, ATLANTIC STYLE	37
-	-	-	-	BOLT, ADJUSTMENT	35
-	-	-	-	SUPPORT, TERMINAL	34
-	-	-	-	SCR, BHSC, RoHS (M4 X 20)	33
-	-	-	-	HEX HEAD, FLANGED, M5 X 8mm LONG	32
-	-	-	-	SPACER, STRIP GUIDE	30
-	-	-	-	ASSEMBLY, STRIP GUIDE	29
-	-	-	-	SPACER, CRIMPER	28
-	-	-	-	SPRING, COMPRESSION	27
-	-	-	-	LEVER, DRAG RELEASE	26
-	-	-	-	DRAG, TERMINAL	25
-	-	-	-	STRIP GUIDE	24
-	-	-	-	SCR, SKT HD SHLDR 5.0 DIA X 6.0	23
-	-	-	-	HOLD DOWN, TERMINAL	18
-	-	-	-	INSERT, SHEAR	13
-	-	-	-	SPRING, COMPRESSION	12
-	-	-	-	STOP, SHEAR	11
-	-	-	-	SHEAR HOLDER, FRONT	10
-	-	-	-	FLOATING SHEAR, FRONT	9
-	-	-	-	ANVIL, COMBINATION .055	8
-	-	-	-	SPACER	7
-	-	-	-	DEPRESSOR, SHEAR	5
-	-	-	-	BLOCK, CRIMPER SPACER	4
-	-	-	-	CRIMPER, INSULATION O PREMIUM	3
-	-	-	-	SPACER, CRIMPER	2
-	-	-	-	CRIMPER, WIRE, F	1

DIMENSIONS:	TOLERANCES UNLESS OTHERWISE SPECIFIED:	OWN	CHK	APPV	DATE	NAME	SIZE	CAGE CODE	DRAWING NO	RESTRICTED TO
mm	0 PLC ± 1 PLC ± 2 PLC ± 3 PLC ± 4 PLC ± ANGLES ±	Y. YIN	G. BAILEY	U. GUO	26DEC2013	Ocean Side Feed Applicator	A1	00779	00779	Customer Accessible Production Drawing
MATERIAL:	FINISH:	WEIGHT:								

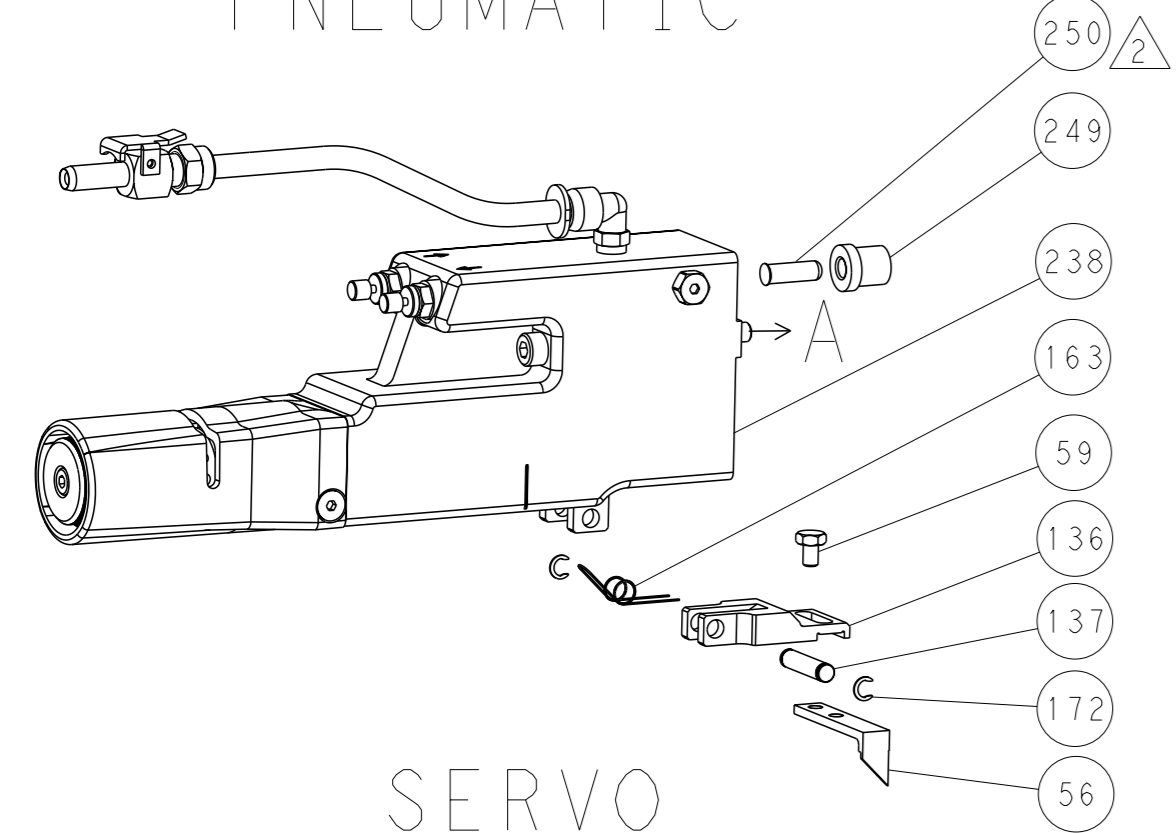
SHEETS 3 & 4 ARE NOT REQUIRED FOR ATLANTIC VERSION

LOC	DIST	REV	DATE	OWN	APVD
A	66				
SEE SHEET 1					

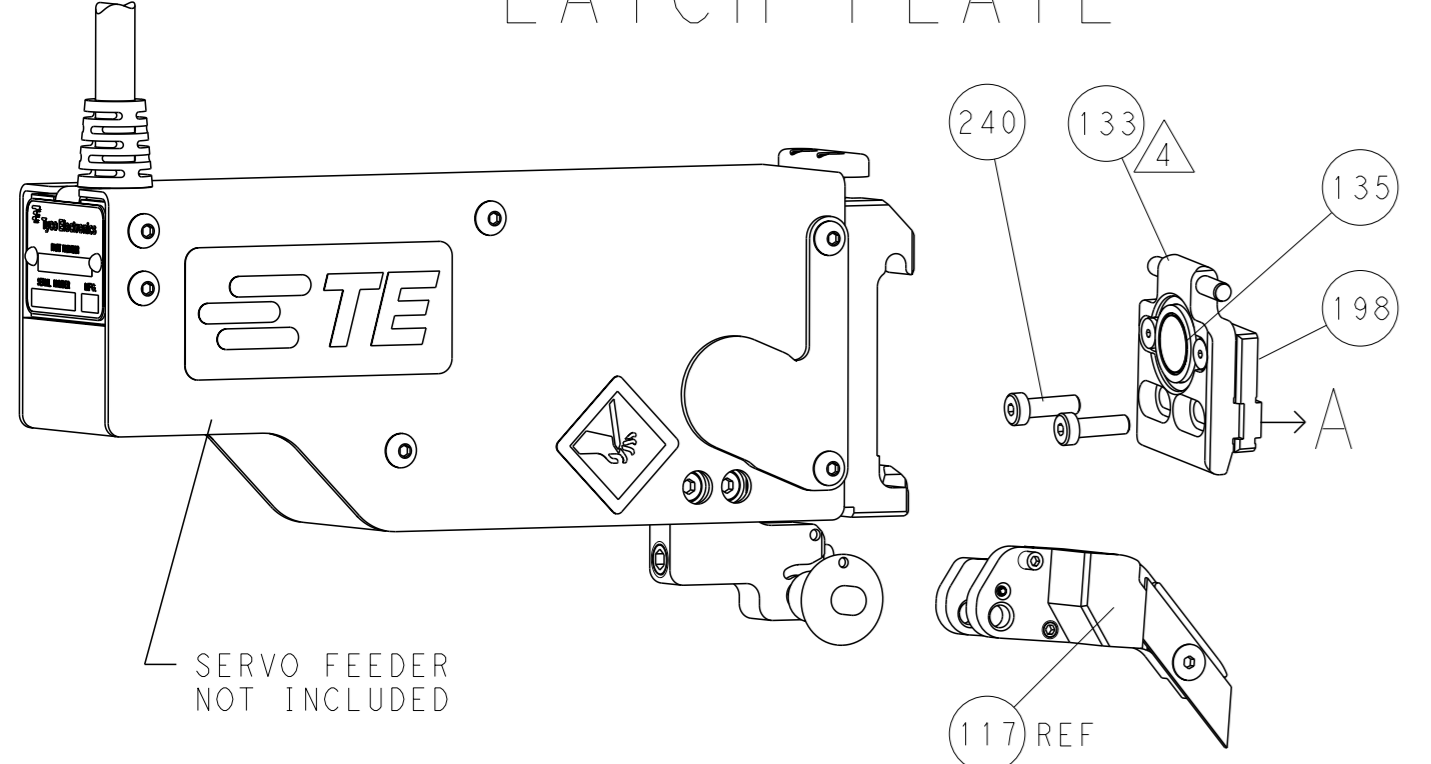
FEED TYPE MECHANICAL



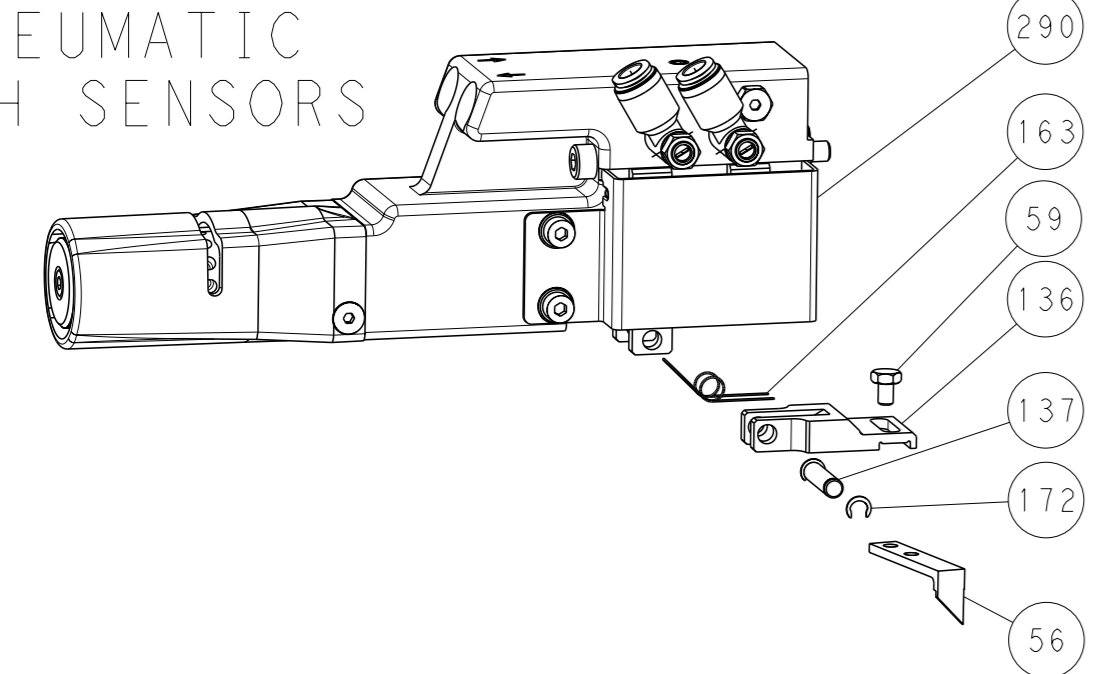
PNEUMATIC



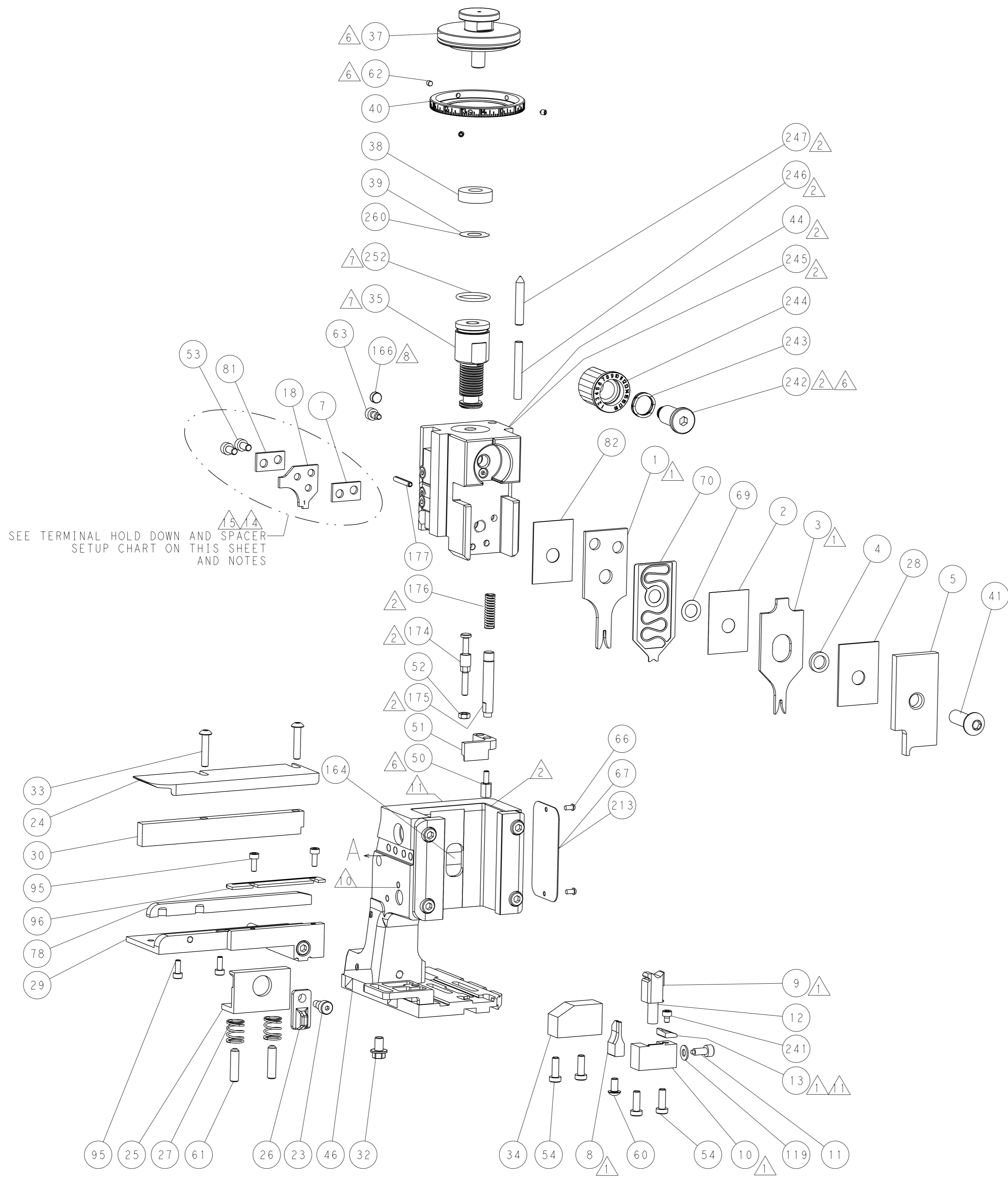
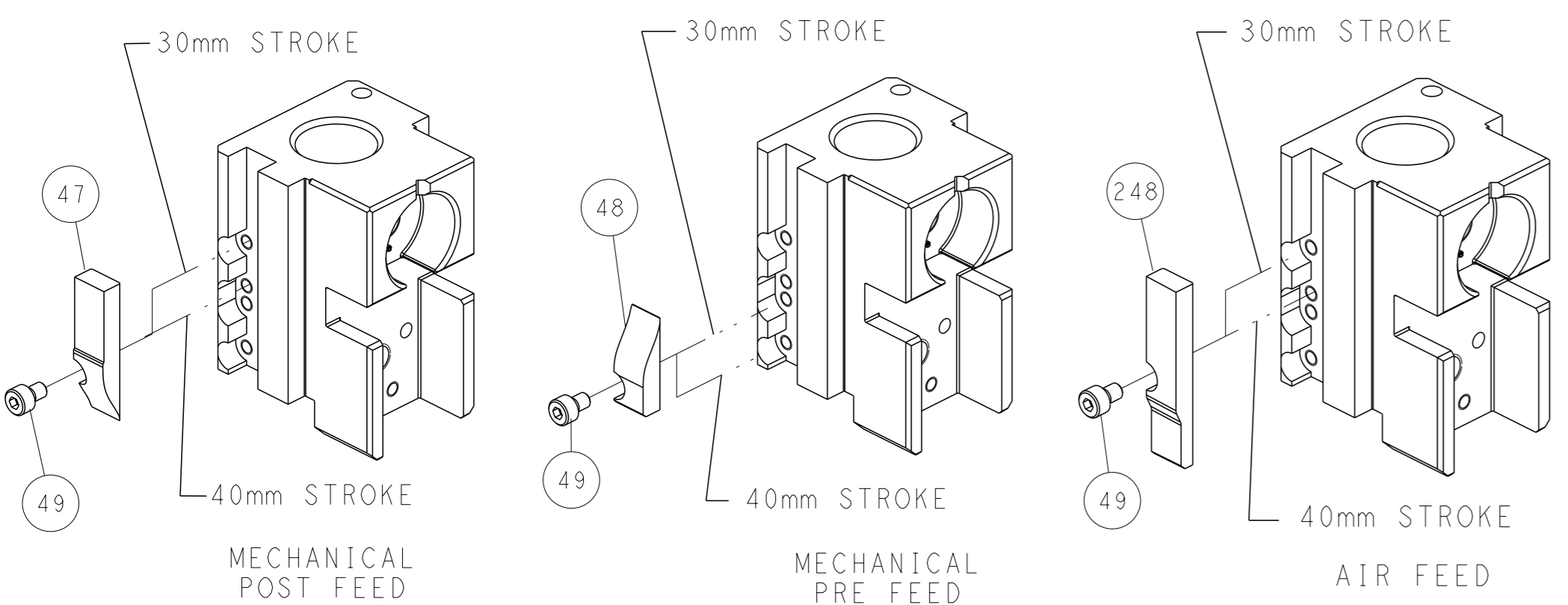
SERVO LATCH PLATE



DOUBLE ACTING PNEUMATIC WITH SENSORS



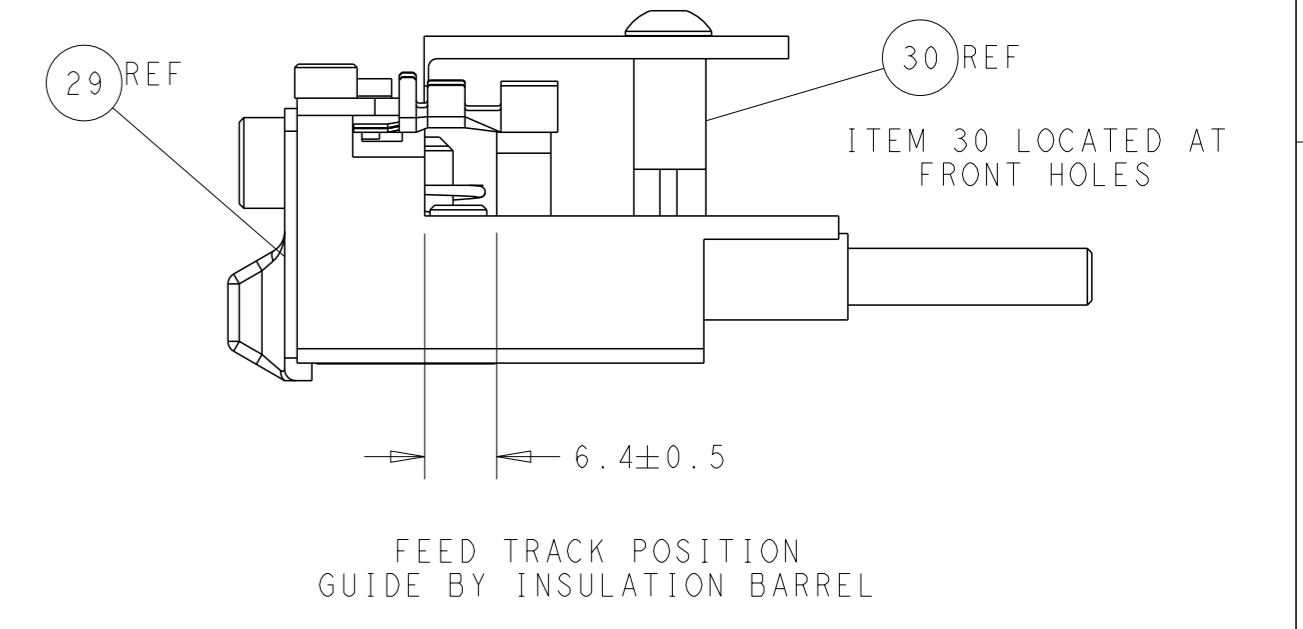
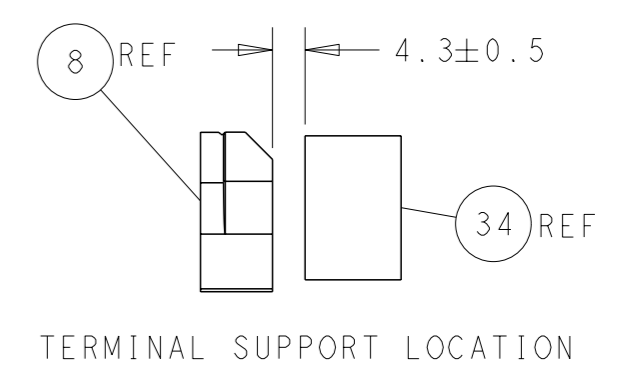
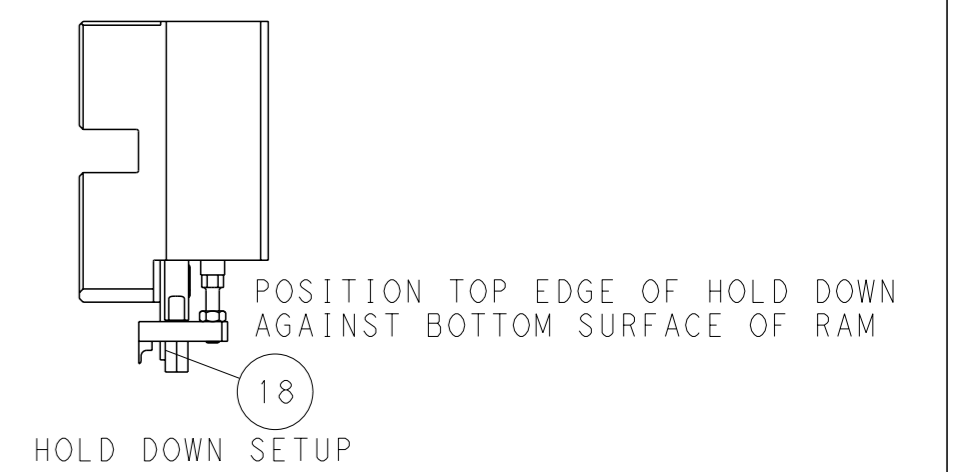
CAM POSITIONS



SEE TERMINAL HOLD DOWN AND SPACER SETUP CHART ON THIS SHEET AND NOTES

TERMINAL HOLD DOWN & SPACER SETUP CHART

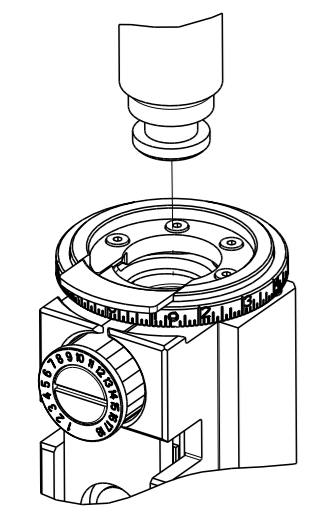
GROUP	HOLD DOWN & SPACER TOOLING SETUP FOR TERMINALS:	POSITION
GROUP 1	928999-1 1-928918-2	POSITION 1
	928999-5 2-928918-2	
	928999-6 3-928918-2	
	5-928999-1 5-928918-1	
	5-928999-5 6-928918-1	
GROUP 2	928918-1 1394702-1	POSITION 2
	928918-2 1394702-2	
	1-928918-1 5-1394702-1	
	5-928918-1 5-1394702-2	
	968893-1	
GROUP 2	968220-1 5-968220-6	POSITION 2
	968220-5 1703296-1	
	968220-6 1703296-5	
	5-968220-1 1534116-1	
	5-968220-5 1534116-2	
GROUP 2	1241918-1	POSITION 2



ATLANTIC VERSION
 Shown on sheets 1 of 4 & 2 of 4
 (Pacific version shown on sheets 3 of 4 & 4 of 4)

DIMENSIONS: mm		TOLERANCES UNLESS OTHERWISE SPECIFIED:		OWN: Y. YIN 26DEC2013	TE Connectivity
0 PLC	±	1 PLC	±	CHK: G. BAILEY 26DEC2013	Harrisburg, PA 17105-3608
2 PLC	±	3 PLC	±	APVD: H. GUO 26DEC2013	
4 PLC	±	ANGLES	±	NAME: Ocean Side Feed Applicator	
MATERIAL:		WEIGHT:		SIZE: A1	CAGE CODE: 00779
				DRAWING NO: C=2266152	RESTRICTED TO:
Customer Accessible Production Drawing				SCALE: 5:1	SHEET 2 of 4

PART NUMBER	REVISION	DESCRIPTION	FEED TYPE	
2-2266152-1	D	FINE CRIMP HEIGHT ADJUST	MECHANICAL	OBSOLETE
2-2266152-2	D	FINE CRIMP HEIGHT ADJUST	PNEUMATIC	OBSOLETE
2-2266152-5	D	FINE CRIMP HEIGHT ADJUST	SERVO LATCH PLATE	OBSOLETE
2-2266152-7	D	FINE CRIMP HEIGHT ADJUST	NONE	OBSOLETE
4-2266152-2	D	FINE CRIMP HEIGHT ADJUST	DOUBLE ACTING PNEUMATIC WITH SENSORS	OBSOLETE
7-2266152-7	A	CRIMP TOOLING KIT	-	



APPLICATOR DATA		
CRIMP WIRE	SIZE	TYPE
1.40 mm [.055]	F	
1.83 mm [.072]	O	

APPLICATOR INSTRUCTIONS 408-10389

TERMINAL DATA: TE TERMINAL TE TE CRIMP SPECIFICATION			
TERMINAL NAME: MICRO QUADOCK SYSTEM			
WIRE STRIP LENGTH	INSULATION DIAMETER RANGE		
3.05-3.35 mm [.120-.132 IN]	Ø1.15-1.60 mm [.045-.063 IN]		
TERMINAL APPLICATION SPECIFICATION	114-18021		
TERMINALS APPLIED			
GROUP 1		GROUP 2	
TE TERMINAL	TE TERMINAL	TE TERMINAL	TE TERMINAL
928999-1	5-928918-2	968220-1	1703296-1
928999-5	5-928918-1	968220-5	1703296-5
928999-6	6-928918-1	968220-6	1534116-1
5-928999-1	6-928918-2	5-968220-1	1534116-2
968893-1	6-928918-3	5-968220-5	5-1534116-1
928918-1	1394702-1	5-968220-6	5-1534116-2
928918-2	1394702-2		1241918-1
1-928918-1	5-1394702-1		
1-928918-2	5-1394702-2		
5-928999-5	5-928999-6		
6-928999-5			

WIRE SIZE	CRIMP HEIGHT mm [INCH]	CRIMP HEIGHT REFERENCE SETTING
0.50mm2	0.86 +/- 0.03 [.034 +/- .001]	5.0
0.35mm2	0.76 +/- 0.03 [.030 +/- .001]	6.1
0.25mm2	0.72 +/- 0.03 [.028 +/- .001]	6.6

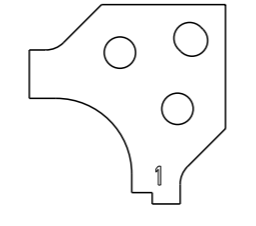
- RECOMMENDED SPARE PARTS
- GREASE BEARING SURFACES LIGHTLY
- LUBRICATE DAILY PER THE APPLICATOR INSTRUCTION SHEET SUPPLIED WITH THE APPLICATOR.
- APPLICATOR SPECIFIC DATA TO BE ENTERED INTO BLANK MEMORY CHIP AT ASSEMBLY. SEE BELOW FOR PART NUMBER: MECHANICAL FEED WITH "SMART APPLICATOR" CONVERSION: 8-2266152-4 PNEUMATIC FEED WITH "SMART APPLICATOR" CONVERSION: 8-2266152-4 SERVO FEED WITH "FINE CRIMP HEIGHT ADJUST": 8-2266152-5
- ADJUSTMENT OF THE STRIPPER MAY BE REQUIRED WHEN MOVING THE APPLICATOR BETWEEN BENCH AND LEADMAKER APPLICATIONS.
- APPLY PART NUMBER 1-23419-5 LOCTITE TO THREADS OF ITEMS 50, 62 APPLY PART NUMBER 2-23419-6 LOCTITE TO THREADS OF ITEMS 242.
- GREASE THREADS, GROOVE AND O-RING ON ITEMS 139 & 152.
- MAGNET MUST BE ORIENTED CORRECTLY IN ORDER TO PROPERLY ACTUATE THE COUNTER.
- CRIMP HEIGHT REFERENCE SETTING WAS THE SETTING USED WHEN THE APPLICATOR WAS QUALIFIED AT THE FACTORY. ADJUSTMENT MAY BE NECESSARY WHEN RUNNING APPLICATOR IN THE FIELD.
- SPARE FEED CAM STORAGE LOCATION REFER TO INSTRUCTION SHEET FOR ADDITIONAL INFORMATION.

***WARNING**
ON INSTALLATION, SET WIRE DISC, ITEM 40 TO LARGEST WIRE SIZE SETTING. USE OF SETTINGS BELOW MINIMUM REQUIRED CRIMP HEIGHT SETTING WILL CAUSE DAMAGE TO CRIMP TOOLING.

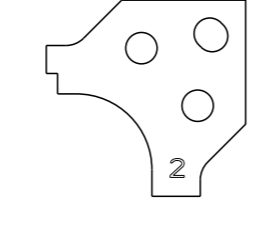
TO CONVERT THE APPLICATOR TO A NON-CARRIER CUTTING STYLE, REMOVE ITEM 13 AND ATTACH TO THE LOCATION ON BACK SIDE OF THE HOUSING. REFER TO INSTRUCTION SHEET FOR ADDITIONAL INFORMATION.

REFER TO APPLICATION SPECIFICATION, 114-18021, PAGE 8, NOTE 3 CONCERNING CRIMPING 0.50mm2 WIRE.

POSITION THE HOLD DOWN, ITEM 18, IN ORIENTATION 1 FOR GROUP 1 TERMINALS. REFER TO SHEET 4.



POSITION THE HOLD DOWN, ITEM 18, IN ORIENTATION 2 FOR GROUP 2 TERMINALS. REFER TO SHEET 4.



THIS APPLICATOR IS SPECIFIC FOR USE IN A STRIPPER SEAL TERMINATING UNIT.

THIS APPLICATOR IS EQUIPPED WITH THE DOUBLE ACTING FEED WITH SENSORS AND IS APPLICATOR SPECIFIC AND DOES NOT REQUIRE ITEMS 49 & 151.

-	1	-	-	-	-	1803430-1	AIR FEED MODULE	290
-	1	1	1	1	1	2119782-1	FINE ADJUST HEAD ASM, PACIFIC STYLE	251
-	-	-	-	1	-	2119640-1	PUSH ROD, AIR FEED	250
-	-	-	-	1	-	2079988-1	BUSHING, LCH5-12, MISUMI	249
-	1	1	1	1	1	1-22279-3	SPRING, COMPRESSION	246
-	1	1	1	1	1	2119082-8	CAM, SNAIL, INSULATION ADJUSTMENT	244
-	1	1	1	1	1	2079764-1	WASHER, WAVE SPRING, CREST-TO-CREST	243
-	1	1	1	1	1	2119083-1	RETAINER, INSULATION DIAL	242
-	1	1	1	1	1	7-18023-7	SCR, SKT HD CAP M3 X 4.0	241
-	-	-	2	-	-	2168400-6	SHCS, LOW HEAD, RoHS, M5 X 16	240
-	-	-	-	-	1	2119580-1	MECHANICAL FEED ASSEMBLY	239
-	-	-	-	1	-	2063440-1	AIR FEED MODULE	238
-	-	-	1	-	-	2119740-2	TAG, IDENTIFICATION	213
-	-	-	1	-	-	1901094-3	SPACER, FEEDER	198
-77	-42	-27	-25	-22	-21	PART NO	DESCRIPTION	ITEM NO

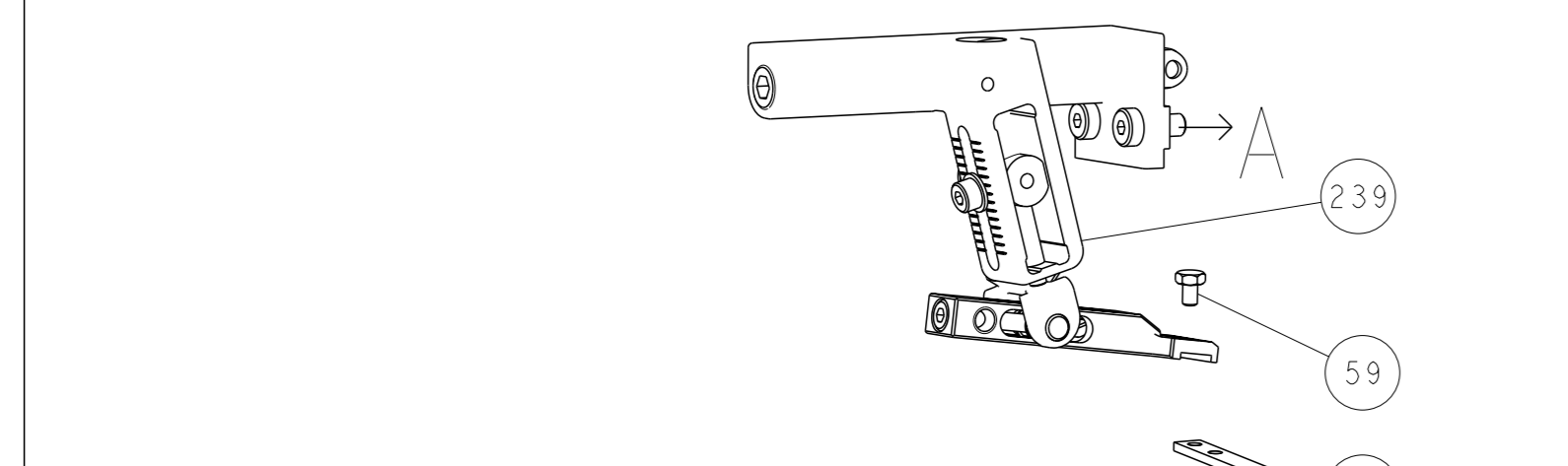
PACIFIC VERSION
Shown on sheets 3 of 4 & 4 of 4
(Atlantic version shown on sheets 1 of 4 & 2 of 4)

SET UP GAUGE	LOC	DIST	REVISIONS			
2119599-1	A	66	REV	DATE	BY	APPV
			-	SEE SHEET 1	-	-

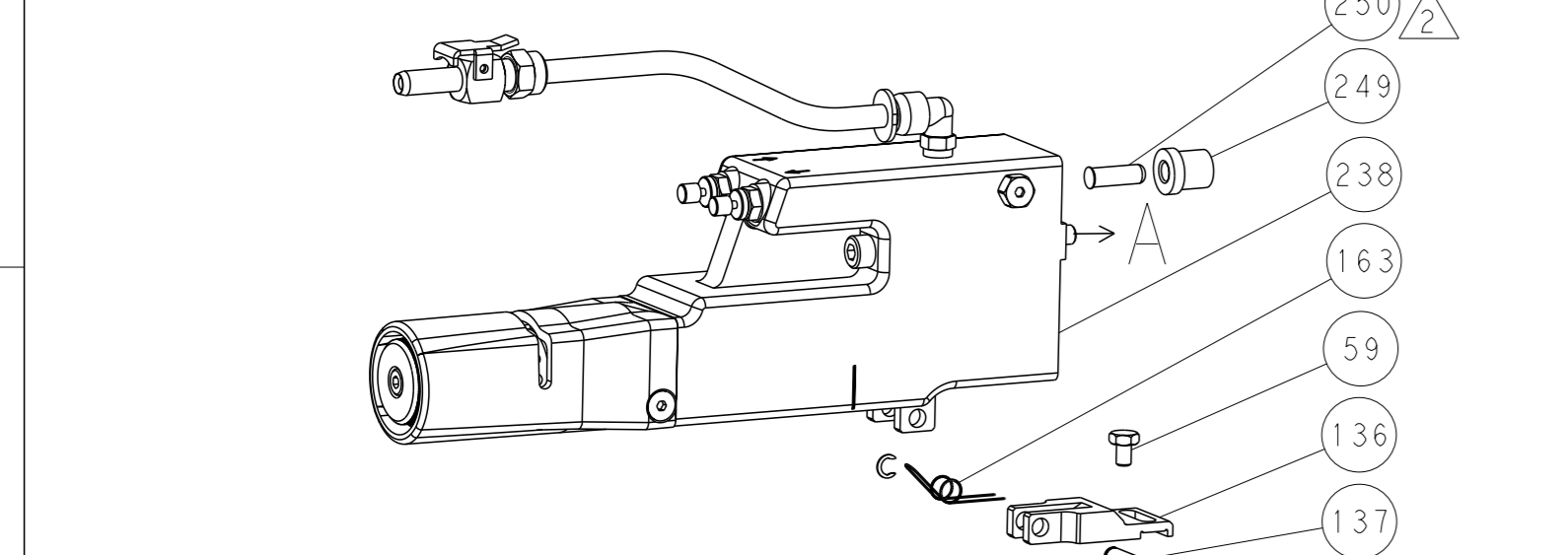
-	1	1	1	1	1	993111-1	PIN, SLOTTED SPRING 3.0 X 20.0	177
-	1	1	1	1	1	5-22280-0	SPRING, COMPRESSION	176
-	1	1	1	1	1	1752353-2	GUIDE PIN, HOLDDOWN	175
-	1	1	1	1	1	1901680-2	GUIDE PIN, HOLDDOWN	174
-	-	-	-	2	-	21045-3	RING, RETAIN, EXTERN, 3/16 CRESCENT	172
8	-	1	1	1	1	994969-1	MAGNET, RARE EARTH HIGH ENERGY	166
-	REF	REF	REF	REF	REF	994970-2	COUNTER, MAGNETIC	164
-	1	-	-	1	-	240638-1	SPRING, FEED FINGER	163
7	-	1	1	1	1	8-21084-1	O-RING, .801 ID, .070 DIA. MAT.	152
16	-	-	-	1	-	2119641-2	FEED CAM, AIR FEED	151
-	1	1	1	1	1	2119798-2	DETENT PIN	145
-	1	1	1	1	1	2079383-8	SCR, BHSC, RoHS (M4 X 16)	144
-	4	4	4	4	4	2168400-5	SHCS, LOW HEAD, RoHS, M4 X 20	143
-	-	-	-	-	1	2119653-2	FEED CAM, POST FEED	142
-	1	1	1	1	1	2-2119656-2	APPLICATOR BASIC ASSEMBLY, SF	141
-	1	1	1	1	1	2119650-1	RAM, ASIAN STYLE, SIDE FEED	140
7	-	1	1	1	1	2119092-2	BOLT, ADJUSTMENT	139
-	1	-	-	1	-	3-23627-7	PIN, RETAIN, GRVD, 3/16 X .854	137
-	-	-	-	1	-	2119799-1	HOLDER, FEED FINGER, AF	136
-	-	-	REF	-	-	SEE NOTE 4	MEMORY CHIP, PROGRAMMED	135
-	-	-	-	1	-	1633743-1	SERVO FEED LATCH ASM	133
-	1	1	1	1	1	1-18028-2	WASHER, FLAT, REG M4	119
-	-	-	REF	-	-	2119944-1	FEED FINGER ASSEMBLY, SF	117
-	1	1	1	1	1	1-690438-0	FRONT STRIP GUIDE	96
-	2	2	2	2	2	2168083-1	SCR, SKT HD CAP, RoHS, M3 X 8.0	95
-	1	1	1	1	1	455888-5	SPACER, CRIMPER	82
14	-	1	1	1	1	1-240641-3	SPACER	81
-	2	2	2	2	2	2168083-1	SCR, SKT HD CAP, RoHS, M3 X 8.0	79
-	1	1	1	1	1	1633782-2	FENCE	78
-	1	1	1	1	1	2119956-1	DOCUMENTATION PACKAGE	71
-	1	1	1	1	1	2119791-5	DEPRESSOR, WIRE	70
-	1	1	1	1	1	2119943-1	WASHER, SPACER	69
-	1	1	-	1	1	2119740-1	TAG, IDENTIFICATION	67
-	2	2	2	2	2	2168078-1	SCREW, DRIVE, RH, RoHS, 2 x .188	66
-	1	1	1	1	1	2119793-1	LIMITER, ADJUSTMENT BOLT	63
6	-	3	3	3	3	992763-5	SCR, SET, SOC, CONE PNT, M3 X 4.0	62
-	2	2	2	2	2	2-18032-5	SCR, SET, FLT PNT, M5 X 20.0	61
-	1	-	-	1	1	5-18022-5	SCR, HEX HD CAP, M4 X 6.0	59
-	1	-	-	1	1	1338685-1	PAWL, FEED	56
-	2	2	2	2	2	2168083-2	SCR, SKT HD CAP, RoHS, M4 X 8.0	53
-	1	1	1	1	1	1-5018030-0	NUT, HEX, REG, RoHS, M3.5	52
-	1	1	1	1	1	4-1722335-3	STRIPPER, SIDE FEED	51
6	-	1	1	1	1	1-1752354-7	STANDOFF, HOLD-DOWN	50
-	-	-	-	1	2	18023-9	SCR, SKT HD CAP M4 X 6.0	49
16	-	-	-	-	1	2119652-1	FEED CAM, PRE FEED	48
-	1	1	1	1	1	2079383-7	SCR, BHSC, RoHS (M8 X 25)	41
-	1	1	1	1	1	2119645-1	DISC, NUMBERED FA WIRE ADJUSTMENT	40
-	1	1	1	1	1	2119957-1	APPLICATOR SHIM PACK	39
-	1	1	1	1	1	1-2119644-4	RAM WASHER, PRECISION	38
-	1	1	1	1	1	1752356-6	SUPPORT, TERMINAL	34
-	2	2	2	2	2	2079383-5	SCR, BHSC, RoHS (M4 X 20)	33
-	1	1	1	1	1	2161328-1	HEX HEAD, FLANGED, M5 X 8mm LONG	32
-	1	1	1	1	1	1320908-6	SPACER, STRIP GUIDE	30
-	1	1	1	1	1	2119959-3	ASSEMBLY, STRIP GUIDE	29
-	1	1	1	1	1	1-455888-0	SPACER, CRIMPER	28
-	2	2	2	2	2	22283-1	SPRING, COMPRESSION	27
-	1	1	1	1	1	356835-1	LEVER, DRAG RELEASE	26
-	1	1	1	1	1	240792-1	DRAG, TERMINAL	25
-	1	1	1	1	1	1320928-2	STRIP GUIDE	24
-	1	1	1	1	1	980371-4	SCR, SKT HD SHLDR 5.0 DIA X 6.0	23
13	-	1	1	1	1	1803155-1	HOLD DOWN, TERMINAL	18
-	1	1	1	1	1	2119806-1	INSERT, SHEAR	13
-	1	1	1	1	1	3-22280-3	SPRING, COMPRESSION	12
-	1	1	1	1	1	1-356885-4	STOP, SHEAR	11
-	1	1	1	1	1	2119805-1	SHEAR HOLDER, FRONT	10
-	1	1	1	1	1	1803095-1	FLOATING SHEAR, FRONT	9
1	1	1	1	1	1	1-1338690-2	ANVIL, COMBINATION .055	8
13	-	1	1	1	1	4-240641-2	SPACER	7
-	1	1	1	1	1	2119757-4	DEPRESSOR, SHEAR	5
-	1	1	1	1	1	238011-8	BLOCK, CRIMPER SPACER	4
1	1	1	1	1	1	2119784-2	CRIMPER, INSULATION O PREMIUM	3
-	1	1	1	1	1	455888-1	SPACER, CRIMPER	2
1	1	1	1	1	1	1-562108-5	CRIMPER, WIRE, F	1
-77	-42	-27	-25	-22	-21	PART NO	DESCRIPTION	ITEM NO

DIMENSIONS:	TOLERANCES UNLESS OTHERWISE SPECIFIED:	OWN	CHK	APPV	DATE	NAME	SCALE	SHEET	REV
mm	0 PLC ± 1 PLC ± 3 PLC ± 4 PLC ± ANGLES ±	Y. YIN	G. BAILEY	U. GUO	26DEC2013	Ocean Side Feed Applicator	5:1	3 of 4	D1

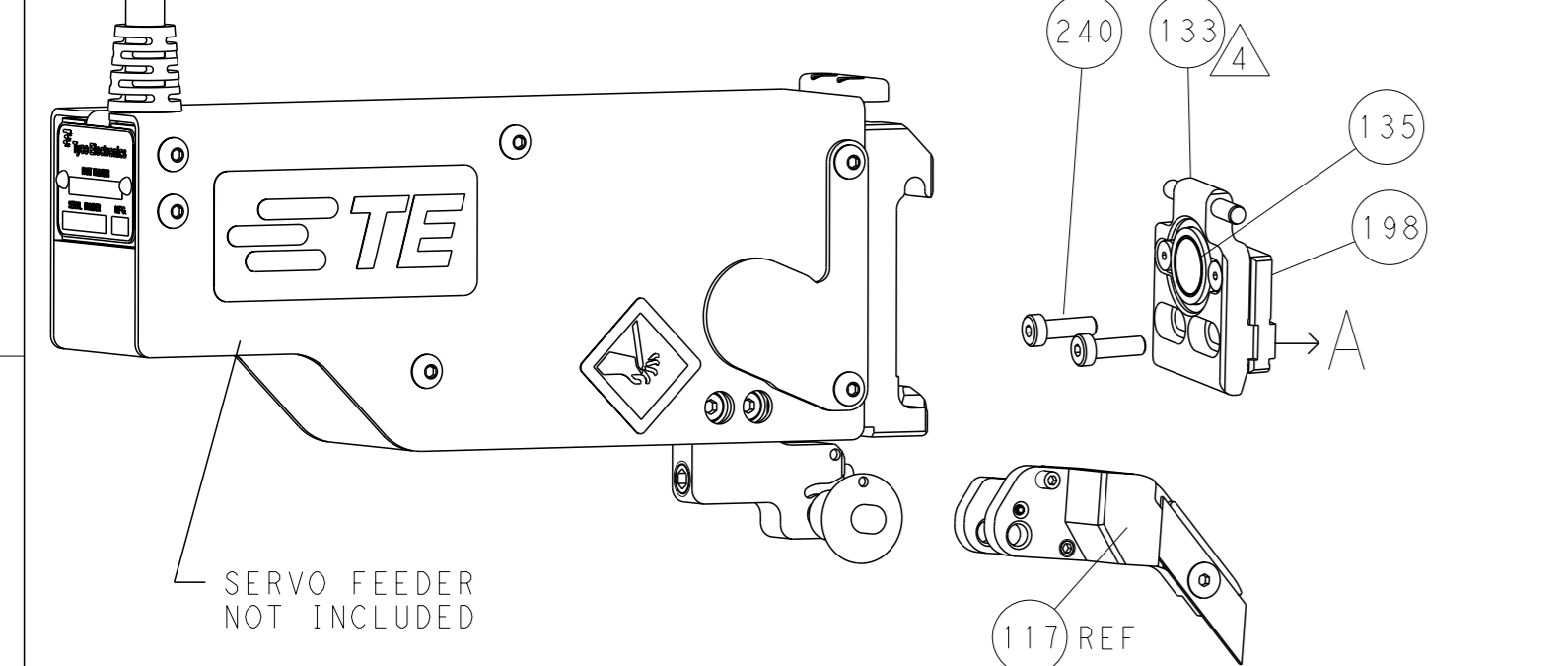
FEED TYPE MECHANICAL



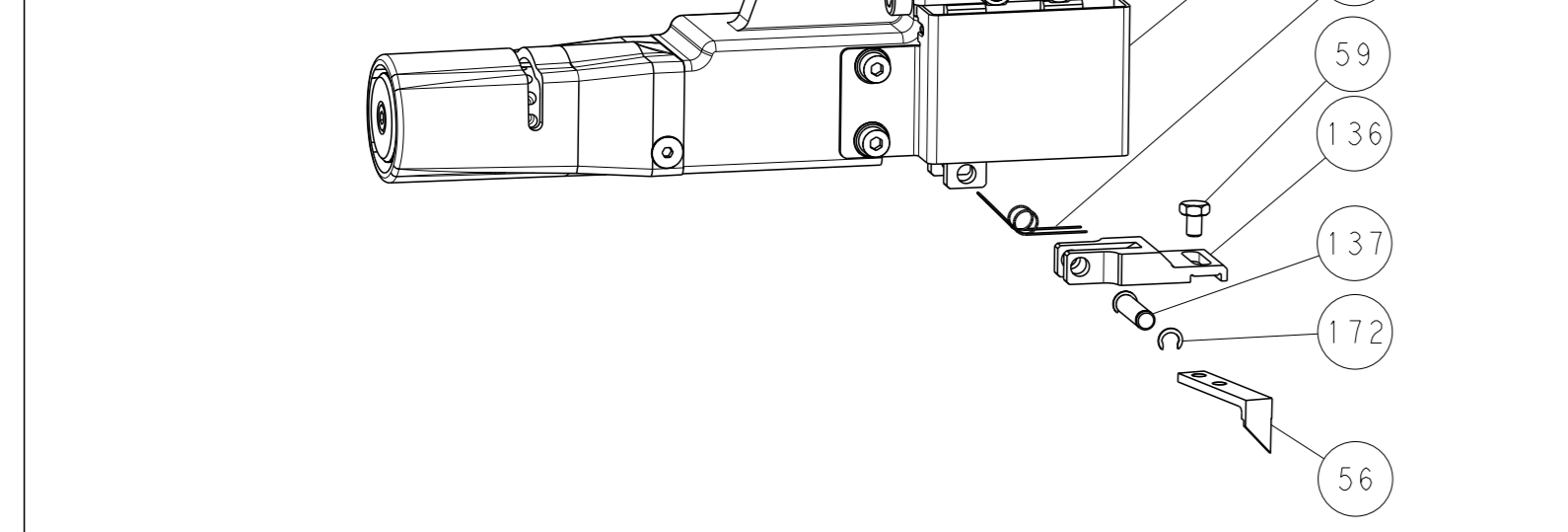
PNEUMATIC



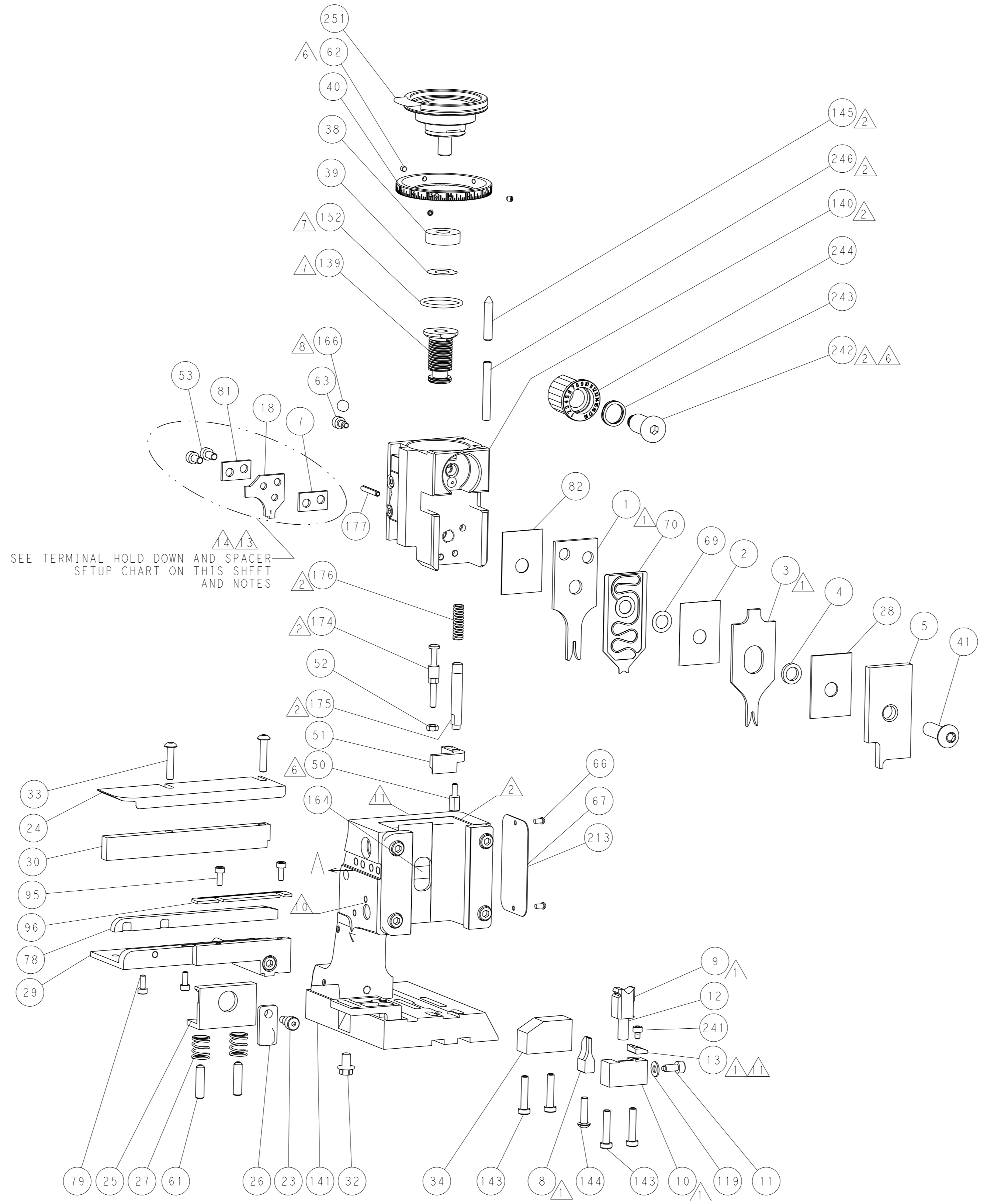
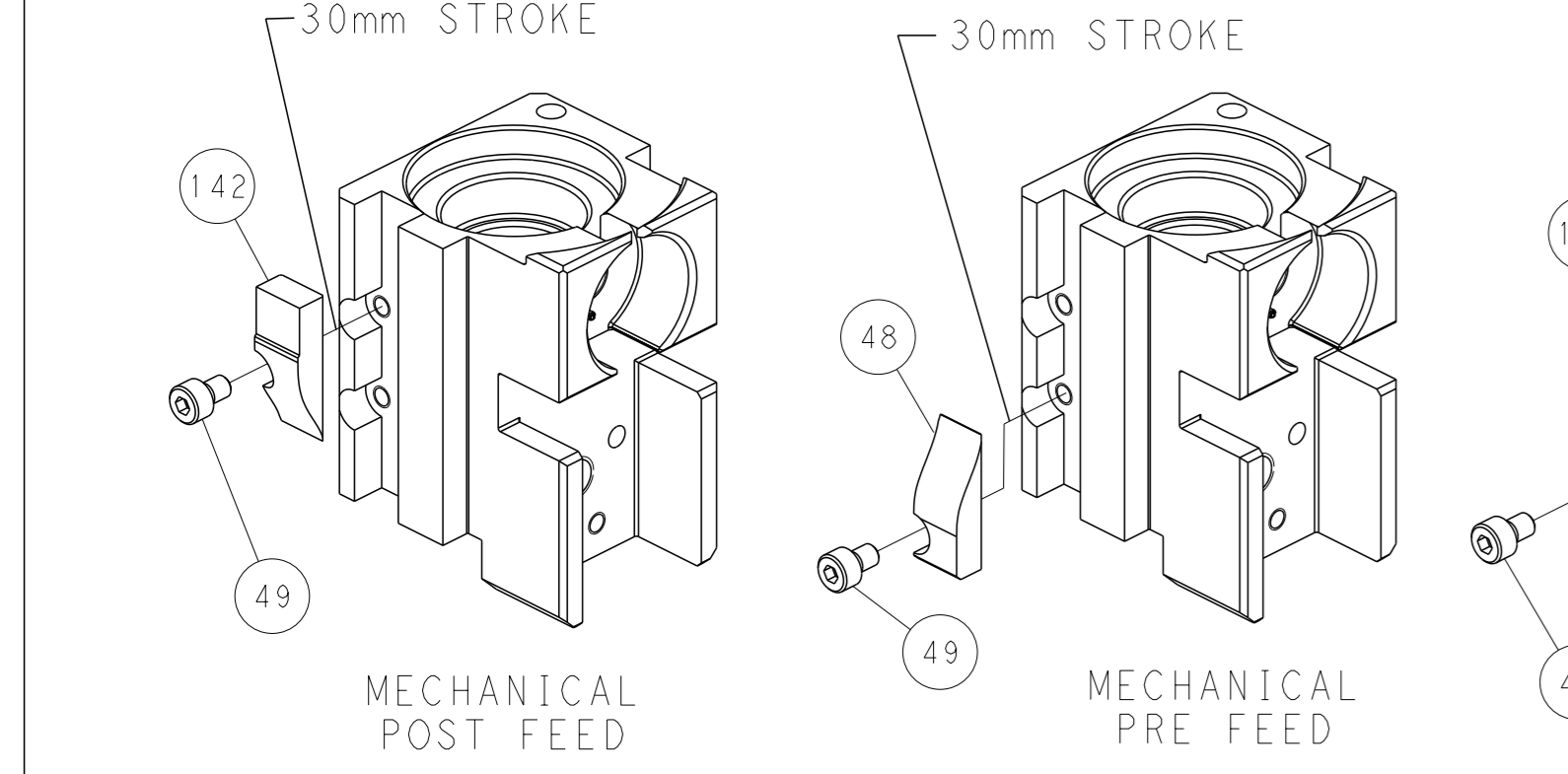
SERVO LATCH PLATE



DOUBLE ACTING PNEUMATIC WITH SENSORS



CAM POSITIONS

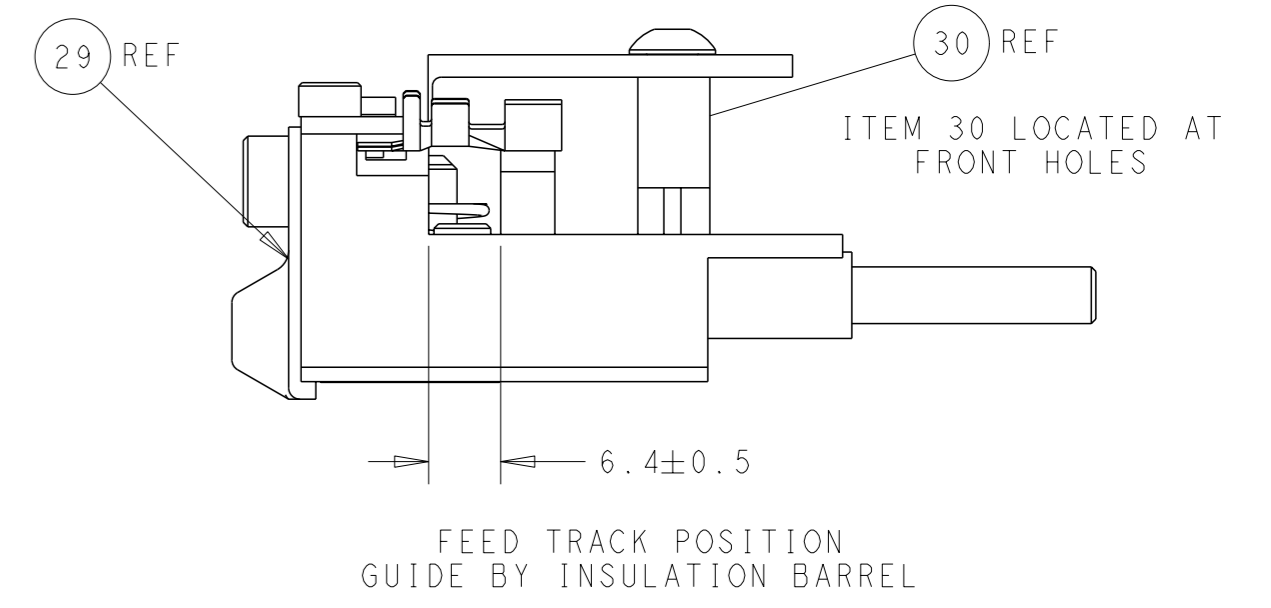
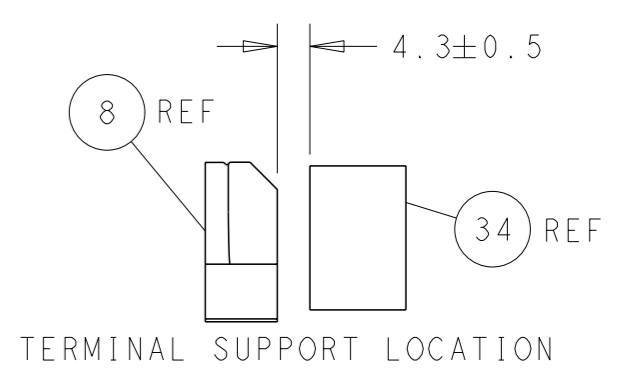
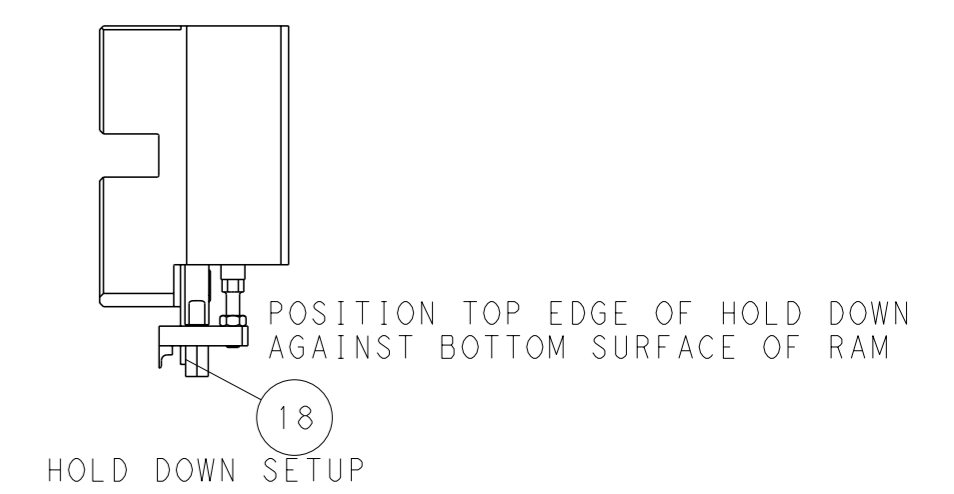


SEE TERMINAL HOLD DOWN AND SPACER SETUP CHART ON THIS SHEET AND NOTES

LOC	DIST	REV	DESCRIPTION	DATE	OWN	APVD
A	66		SEE SHEET 1			

TERMINAL HOLD DOWN AND SPACER SETUP CHART

GROUP	TOOLING SETUP FOR TERMINALS:	POSITION
GROUP 1	HOLD DOWN & SPACER TOOLING SETUP FOR TERMINALS: 1-928918-2 2-928918-2 3-928918-2 4-928918-1 5-928918-1 6-928918-1 7-928918-2 8-928918-3 928918-1 928918-2 1-928918-1	POSITION 1
	HOLD DOWN & SPACER TOOLING SETUP FOR TERMINALS: 968893-1	POSITION 1
GROUP 2	HOLD DOWN & SPACER TOOLING SETUP FOR TERMINALS: 968220-1 968220-5 968220-6 5-968220-1 5-968220-5	POSITION 2
	HOLD DOWN & SPACER TOOLING SETUP FOR TERMINALS: 5-968220-6 1703296-1 1703296-5 1534116-1 1534116-2 5-1534116-1	POSITION 2



PACIFIC VERSION
 Shown on sheets 3 of 4 & 4 of 4
 (Atlantic version shown on sheets 1 of 4 & 2 of 4)

DIMENSIONS: mm		TOLERANCES UNLESS OTHERWISE SPECIFIED:		OWN: Y. YIN	26DEC2013	TE Connectivity Harrisburg, PA 17105-3608
0 PLC ± 1 PLC ± 2 PLC ± 3 PLC ± 4 PLC ± ANGLES ±		FINISH ±		CHK: G. BAILEY	26DEC2013	
MATERIAL:		WEIGHT:		APVD: H. GUO	26DEC2013	NAME: Ocean Side Feed Applicator
				SIZE: A1	CAGE CODE: 00779	DRAWING NO: C=2266152
				Customer Accessible Production Drawing		SCALE: 5:1 SHEET 4 OF 4 REV D1