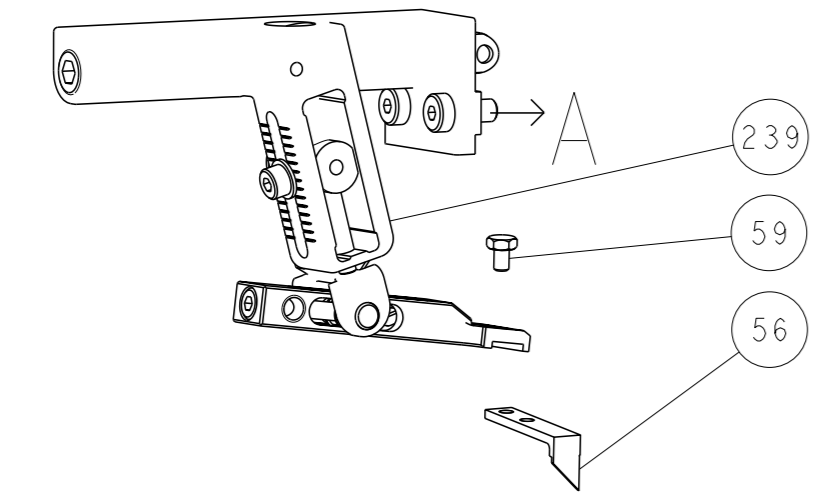


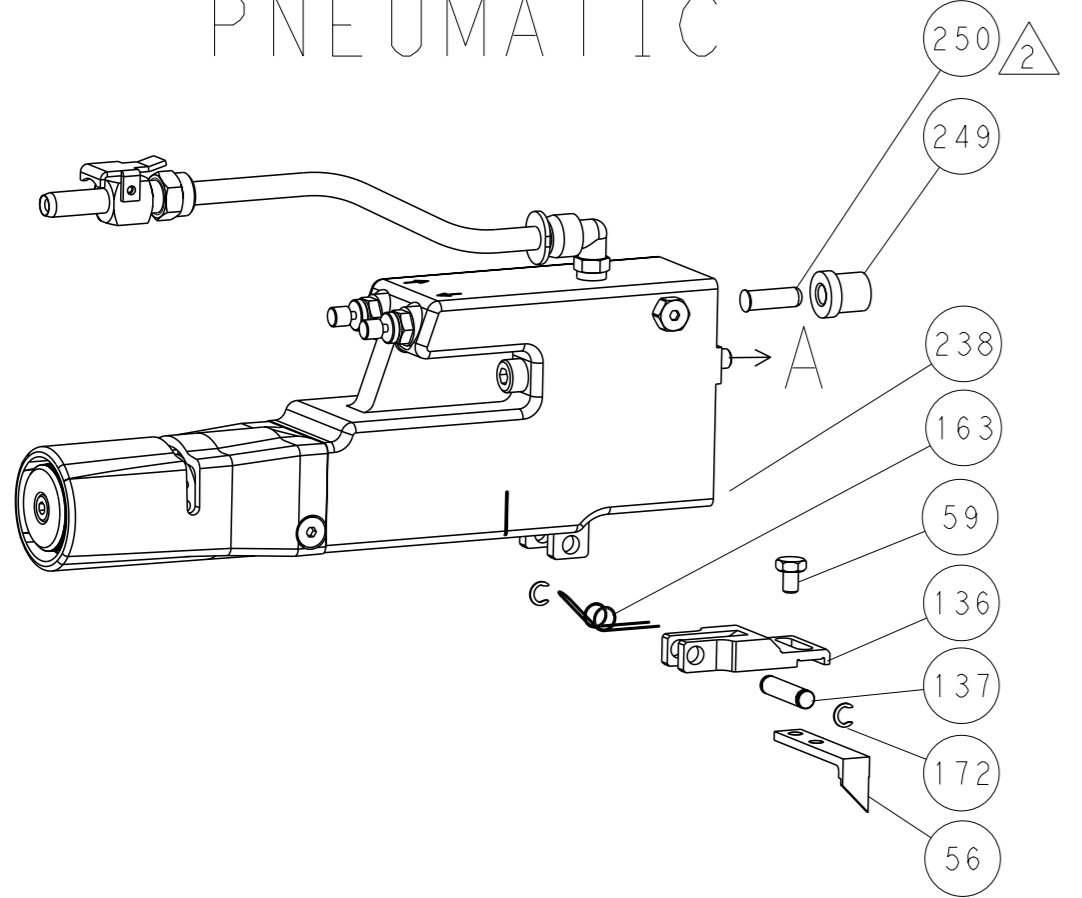


REVISONS		DATE	OWN	APVD
LOC	DIST			
A	66			
P	LYR	DESCRIPTION		
-	-	SEE SHEET 1	-	-

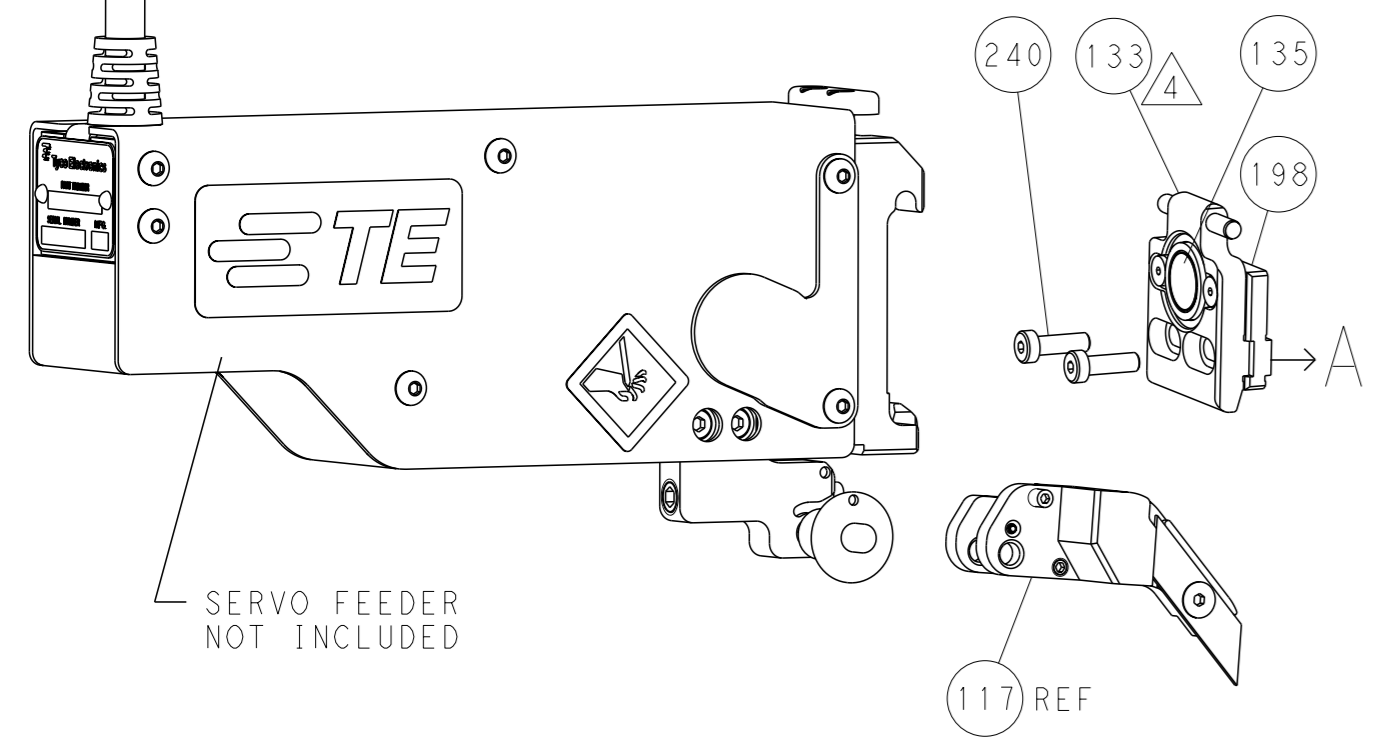
### FEED TYPE MECHANICAL



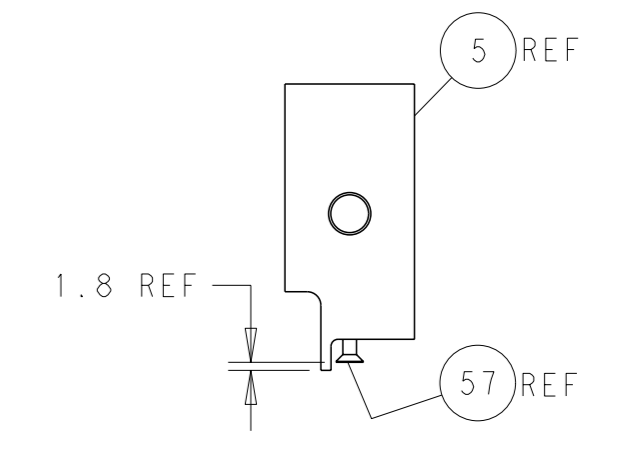
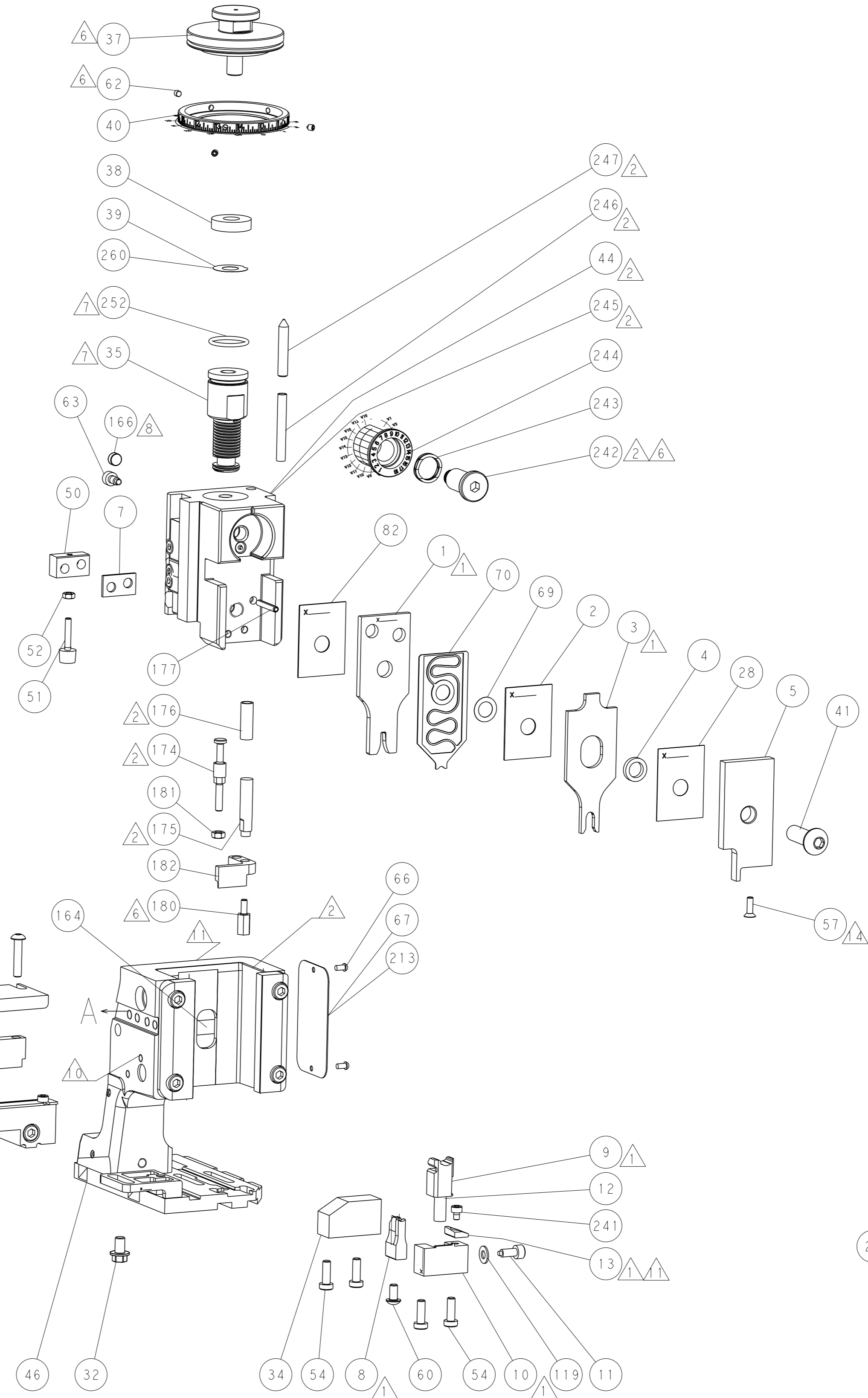
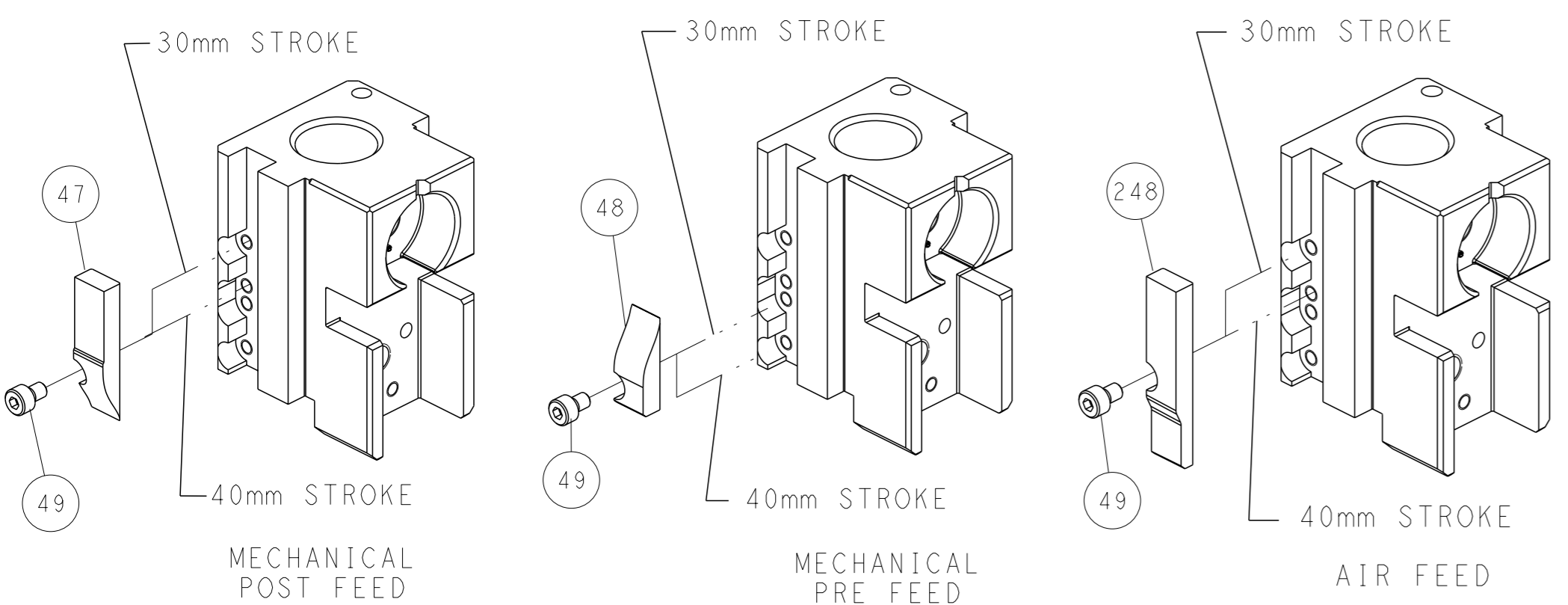
### PNEUMATIC



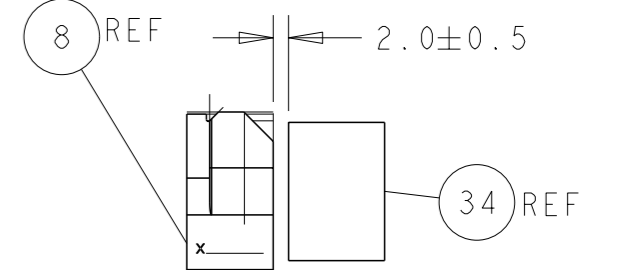
### SERVO LATCH PLATE



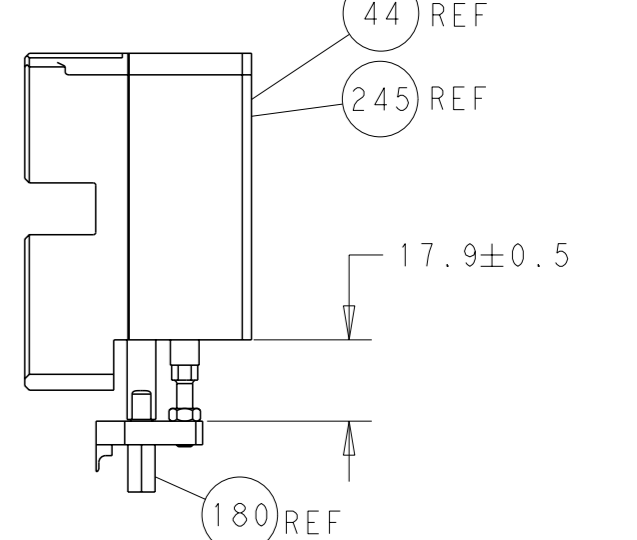
### CAM POSITIONS



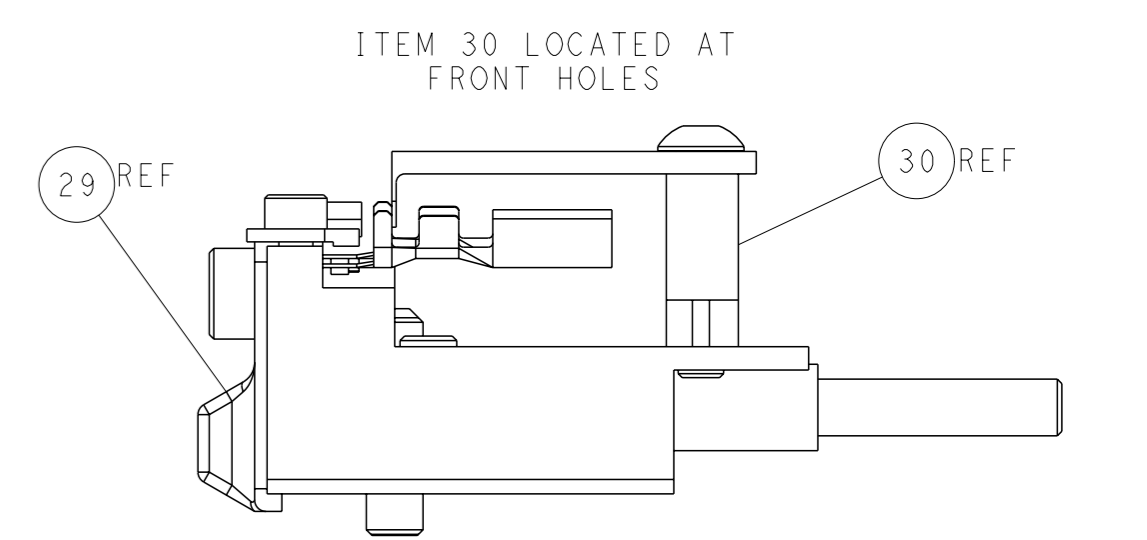
SHEAR DEPRESSOR DETAIL



TERMINAL SUPPORT LOCATION



HOLDDOWN SET-UP



FEED TRACK POSITION GUIDE BY INSULATION BARREL

**ATLANTIC VERSION**  
 Shown on sheets 1 of 4 & 2 of 4  
 (Pacific version shown on sheets 3 of 4 & 4 of 4)

DIMENSIONS:		TOLERANCES UNLESS OTHERWISE SPECIFIED:		OWN	X_ZHAO	25SEP2013	TE Connectivity Harrisburg, PA 17105-3608
mm	0 PLC	±		CNK	T_ELFIN	25SEP2013	
	1 PLC	±		APVD	L_ZHANG	25SEP2013	NAME
	2 PLC	±					Ocean Side Feed
	3 PLC	±					Applicator
	4 PLC	±					
	ANGLES	±	*				
MATERIAL				WEIGHT			SIZE
							CAGE CODE
							DRAWING NO
							RESTRICTED TO
							A1 00779 ©=2266052
							Customer Accessible Production Drawing
							SCALE 1:2 SHEET 2 of 4 REV B1

Table with columns: PACIFIC VERSION TERMINATOR INTERFACE ADAPTER, PART NUMBER, REVISION, DESCRIPTION, FEED TYPE. Includes a diagram of the applicator.

APPLICATOR DATA table with columns: CRIMP, SIZE, TYPE. Includes applicator instructions 408-10389.

TERMINAL DATA: TE TERMINAL TE CRIMP SPECIFICATION table. Includes terminal name, wire strip length, insulation diameter range, and terminals applied.

TERMINAL DATA: TE TERMINAL TE CRIMP SPECIFICATION table. Includes terminal name, wire strip length, insulation diameter range, and terminals applied.

Table with columns: WIRE SIZE, CRIMP HEIGHT mm [INCH], CRIMP HEIGHT REFERENCE SETTING. Includes crimp height diagrams.

Table with columns: WIRE SIZE, CRIMP HEIGHT mm [INCH], CRIMP HEIGHT REFERENCE SETTING. Includes crimp height diagrams.

- RECOMMENDED SPARE PARTS
GREASE BEARING SURFACES LIGHTLY
LUBRICATE DAILY PER THE APPLICATOR INSTRUCTION SHEET SUPPLIED WITH THE APPLICATOR.
APPLICATOR SPECIFIC DATA TO BE ENTERED INTO BLANK MEMORY CHIP AT ASSEMBLY...

\*WARNING
ON INSTALLATION, SET WIRE DISC, ITEM 40 TO LARGEST WIRE SIZE SETTING. USE OF SETTINGS BELOW MINIMUM REQUIRED CRIMP HEIGHT SETTING WILL CAUSE DAMAGE TO CRIMP TOOLING.

Table with columns: PART NO, DESCRIPTION, ITEM NO. Lists various components like FINE ADJUST HEAD ASM, PUSH ROD, BUSHING, etc.

PACIFIC VERSION
Shown on sheets 3 of 4 & 4 of 4
(Atlantic version shown on sheets 1 of 4 & 2 of 4)

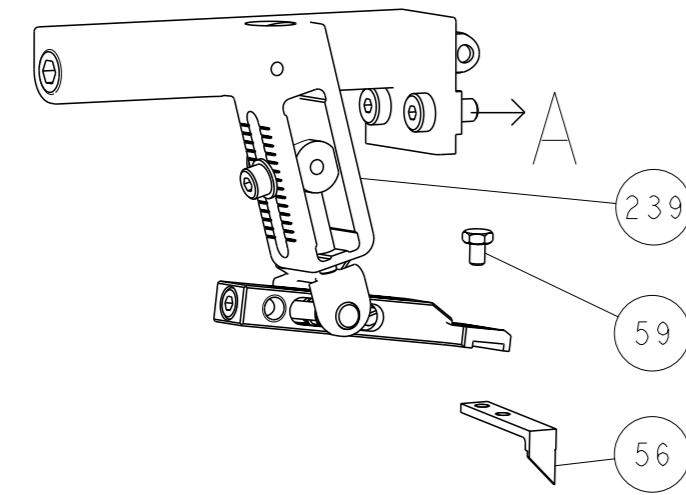
REVISIONS table with columns: P, LTR, DESCRIPTION, DATE, QTN, APVD. Includes revision 1: SEE SHEET 1.

Main parts list table with columns: QTY, P, LTR, PART NO, DESCRIPTION, ITEM NO. Lists numerous components like SCR, SHCS, MECHANICAL FEED ASSEMBLY, etc.

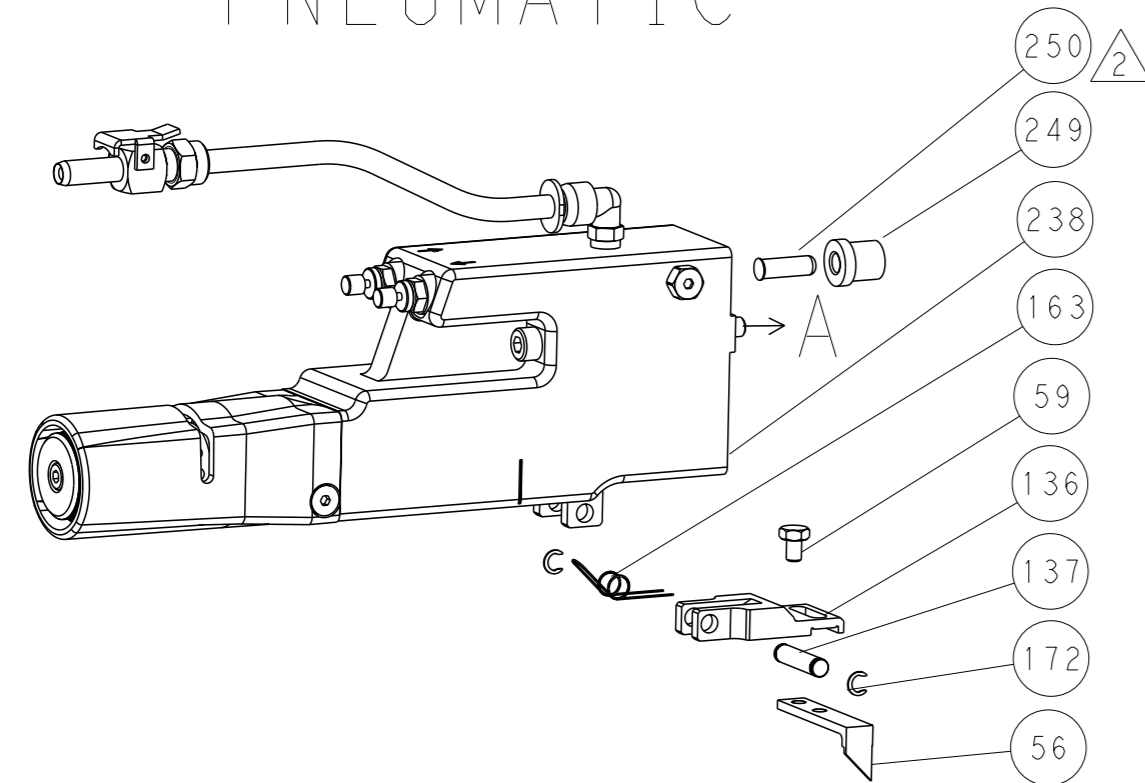
Technical drawing header including dimensions, tolerances, dimensions, material, weight, and customer information. Includes the STE logo and product name Ocean Side Feed Applicator.

LOC	DIST	REVISIONS			
A	66	REV	DATE	OWN	APVD
		1	SEE SHEET 1		

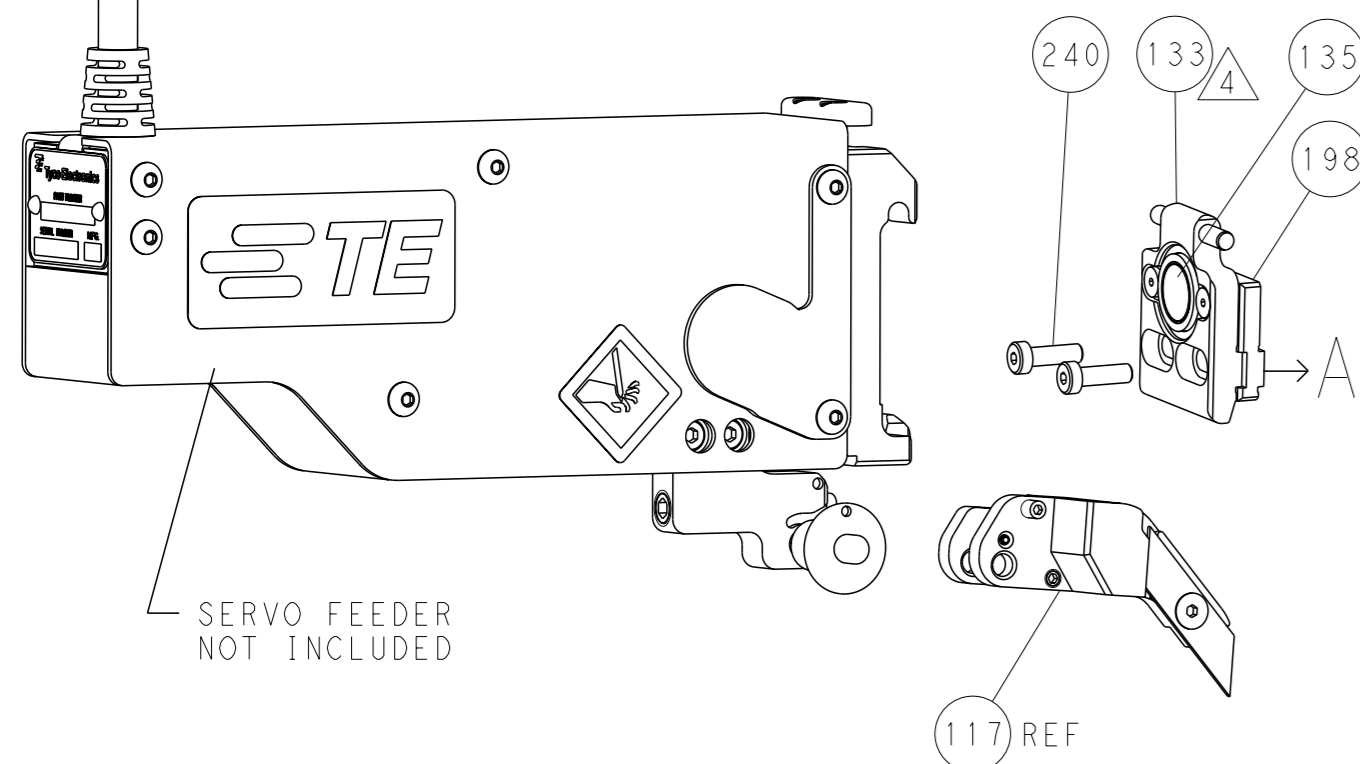
# FEED TYPE MECHANICAL



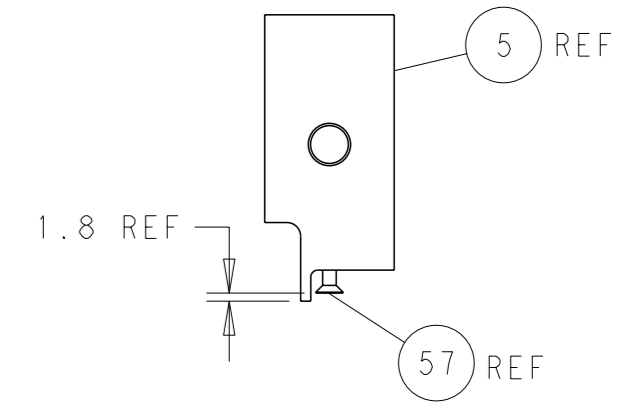
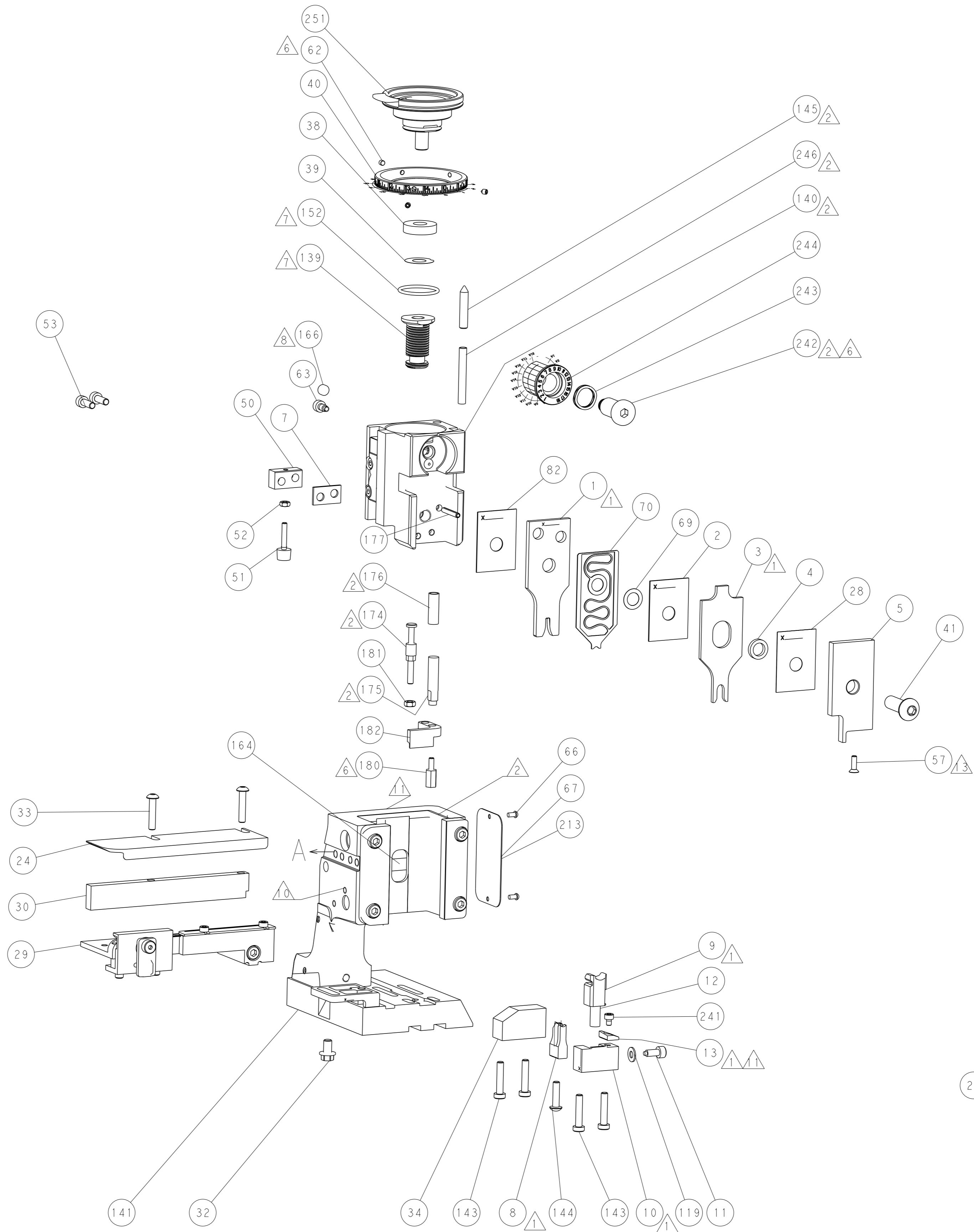
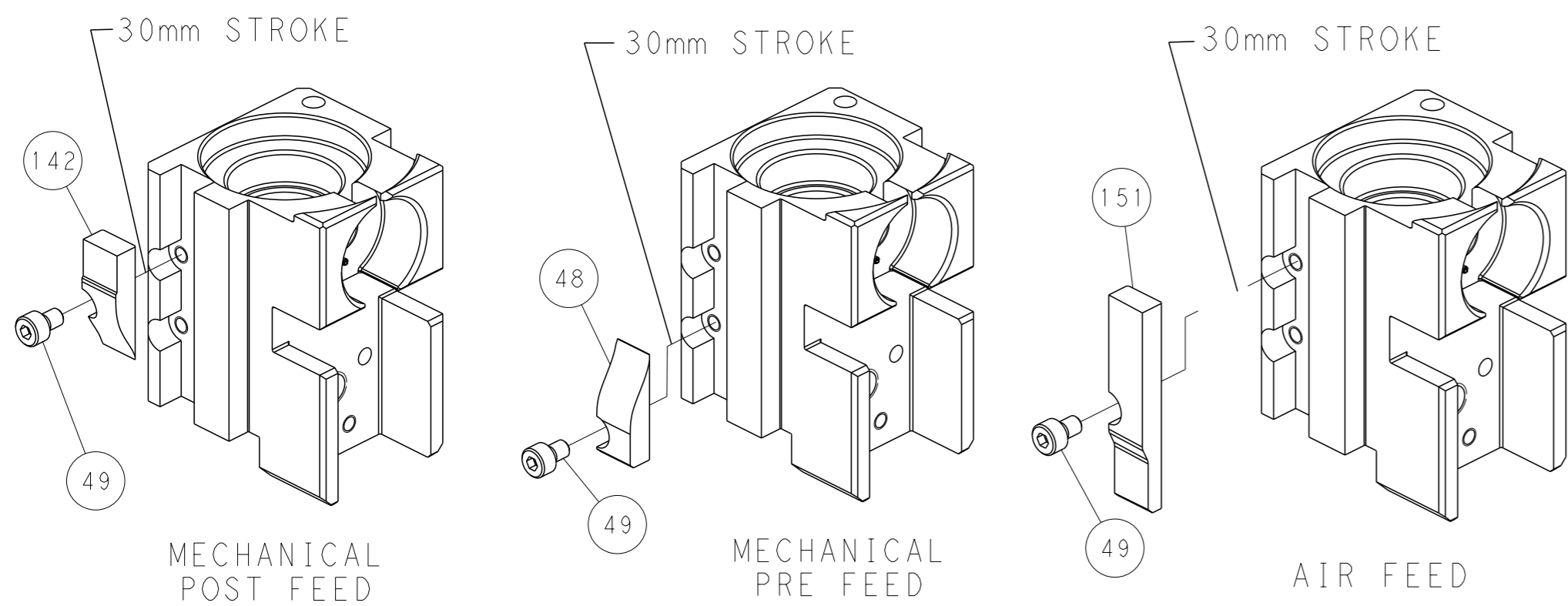
# PNEUMATIC



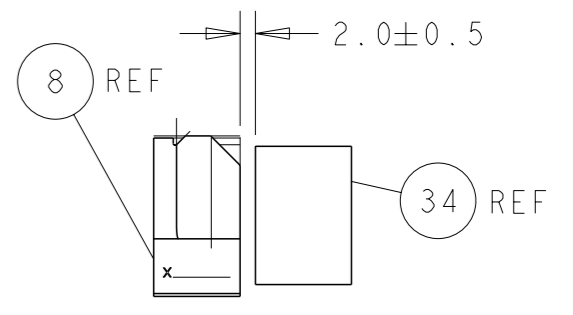
# SERVO LATCH PLATE



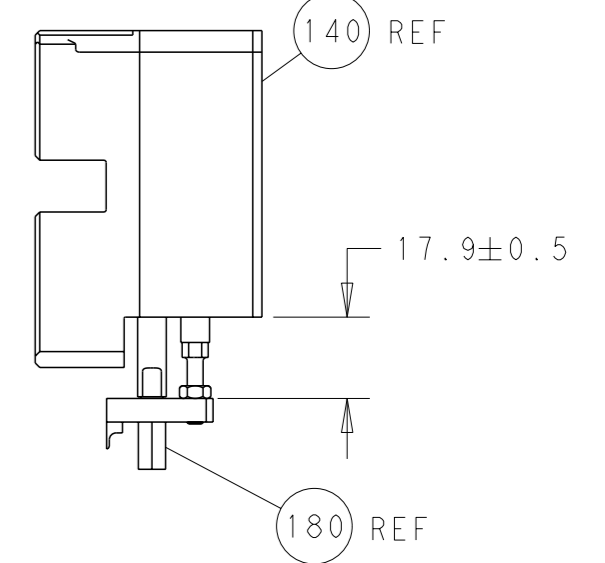
# CAM POSITIONS



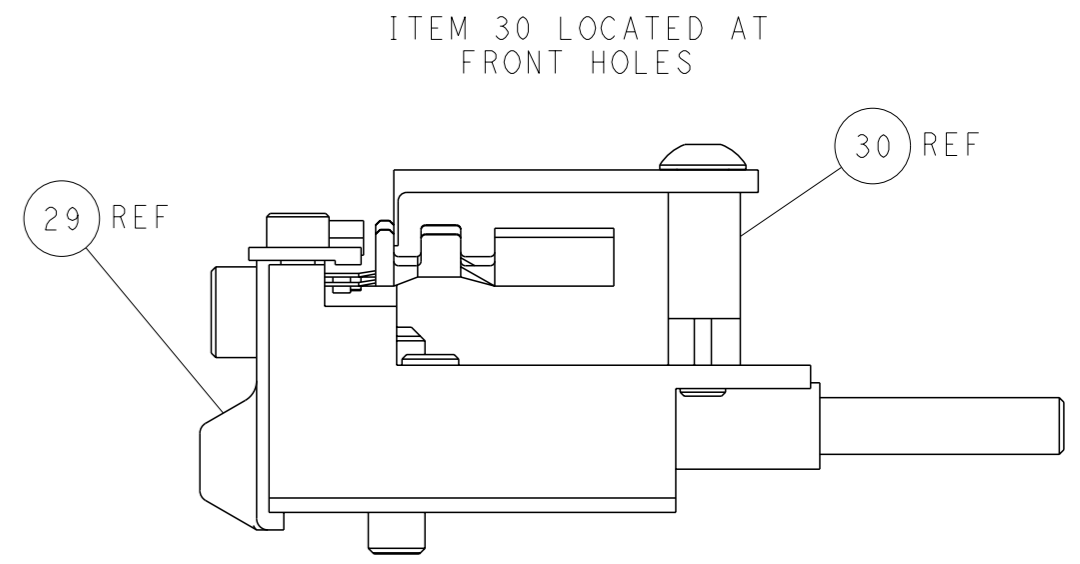
SHEAR DEPRESSOR DETAIL



TERMINAL SUPPORT LOCATION



HOLDDOWN SET-UP



FEED TRACK POSITION GUIDE BY INSULATION BARREL

**PACIFIC VERSION**  
 Shown on sheets 3 of 4 & 4 of 4  
 (Atlantic version shown on sheets 1 of 4 & 2 of 4)

DIMENSIONS: mm 		TOLERANCES UNLESS OTHERWISE SPECIFIED: 0 PLC ± 1 PLC ± 2 PLC ± 3 PLC ± 4 PLC ± ANGLES FINISH ±		OWN X_ZHAO 25SEP2013 CHK T_ELFIN 25SEP2013 APVD L_ZHANG 25SEP2013 PRODUCT SPEC APPLICATION SPEC WEIGHT Customer Accessible Production Drawing		NAME Ocean Side Feed Applicator SIZE CAGE CODE DRAWING NO. RESTRICTED TO A1 00779 C=2266052 SCALE 1:2 SHEET 4 OF 4 REV B1	
-----------------------	--	--	--	---	--	--	--