



Preliminary Specification of COAXIAL CONNECTOR

Preliminary SPEC No. : NMM04-PT0044A

Part Number : MXFQB1PY1000

Written by T. Namaizawa

Checked by T. Kuriyama

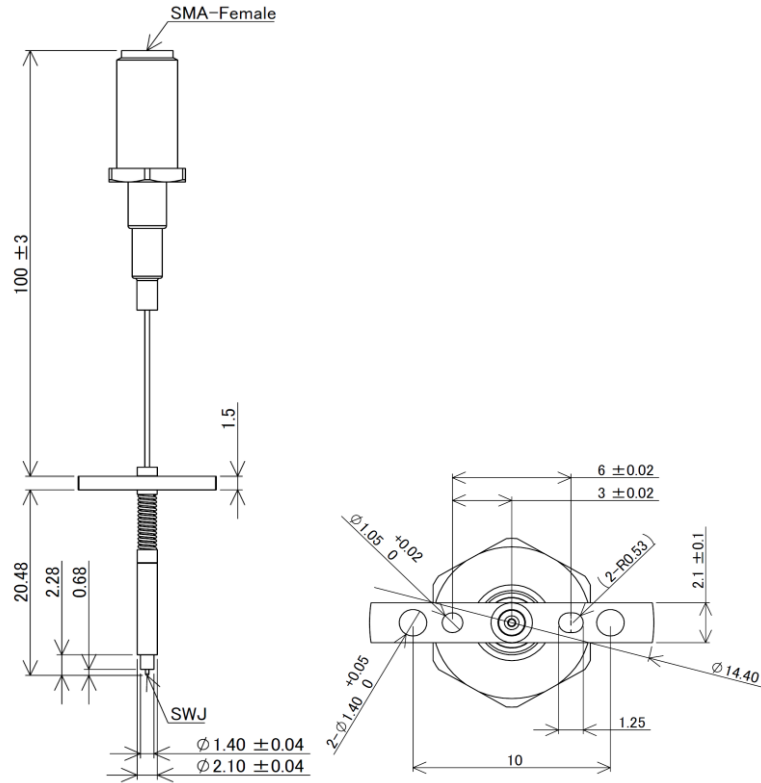
Date 17/Jun./2019

SPECIFICATION

1. MECHANICAL

Automatic measurement probe for SWJ.

MM126710 and MM126712 are used as calibration adapter.



Enclosed attachment : Mounting Nut...1pc  
Lock Washer...1pc

Scale: Free  
Tolerance Unless  
Otherwise Specified: +/-0.5  
Unit: mm

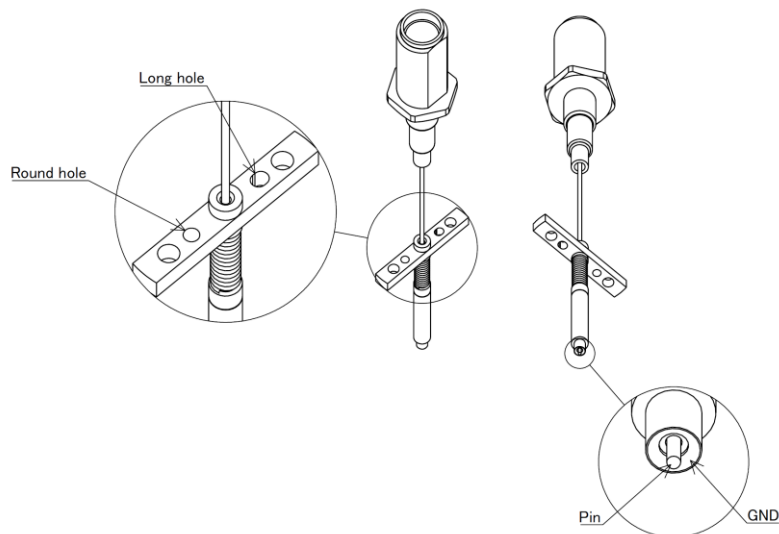


Figure 1 Construction

Preliminary Specification of COAXIAL CONNECTOR

Preliminary SPEC No. : NMM04-PT0044A

Part Number : MXFQB1PY1000

Written by T. Namaizawa

Checked by T. Kuriyama

Date 17/Jun./2019

2. RATING:

Item	Specification
Voltage Rating	30Vr.m.s. maximum
Nominal Frequency Range	DC to 9GHz
Nominal Impedance	50Ω
Temperature Rating	25°C +/- 15°C
Insulation Resistance	500 MΩ minimum
Withstanding Voltage	No evidence of break down in AC200Vr.m.s, 1minute
Initial Contact Resistance (without conductor resistance)	70mΩmax.
Voltage Standing Wave Ratio (V.S.W.R.)	TBD. (DC to 3GHz) TBD. (3GHz to 6GHz) TBD. (6GHz to 9GHz)
Insertion loss	TBD. (DC to 3GHz) TBD. (3GHz to 6GHz) TBD. (6GHz to 9GHz)
A> Durability	1M cycles

3. USE THIS PRODUCTS

The tolerance of position against SWJ.

Probe has centering function by itself, +/-0.28(Typical) mm is permitted against the hole center of SWJ.

Please avoid needless force to SMA-Female connector to come back the original position when disengaging the probe.

The engagement stroke from the bottom surface of flange to the tip of probe is 18.28mm to 19.28mm. (FIGURE2).

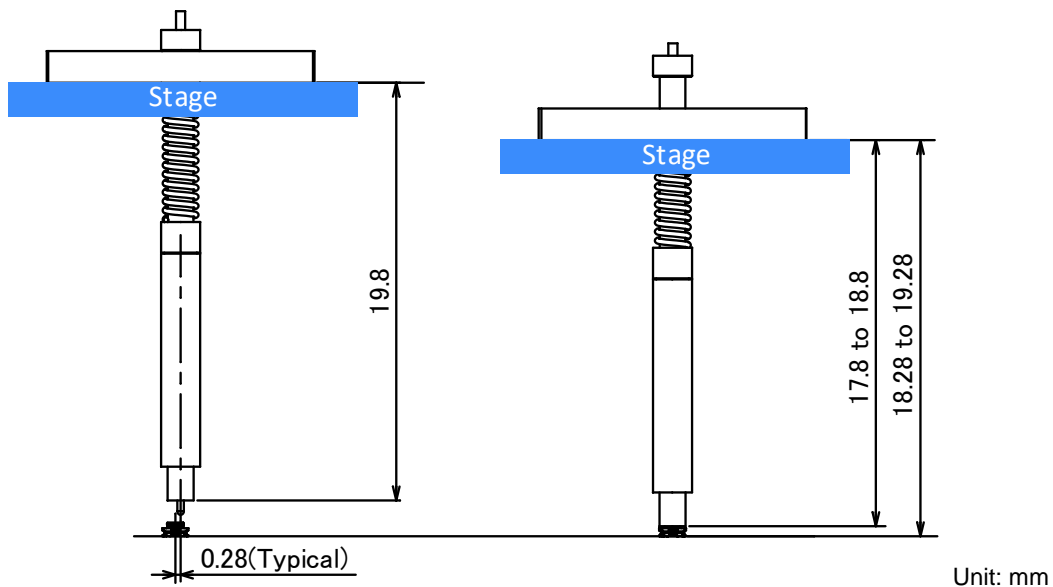


Figure.2 Acceptable engagement range to SWJ