

Specification for release

Customer : _____
 Ordercode: **824001**
 Description: **TVS Diode Array WE-TVS**
 Package: **SOT23-6L**

DATUM / DATE : 2010-01-27

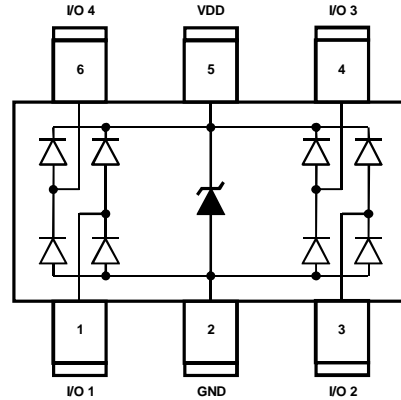
A Features:

- ESD Protection for 4 high-speed I/O channels and VDD
- Provide ESD protection for each channel to
 IEC 61000-4-2 (ESD) $\pm 15\text{kV}$ (air), $\pm 8\text{kV}$ (contact)
 IEC 61000-4-4 (EFT) (5/50ns) 20A (I/O), 40A (VDD)
 IEC 61000-4-5 (Lightning) 4A (8/20 μs)
- Below 5V operating voltage: 2.5 - 3.3 - 4.2 - 5.0V
- Ultra Low capacitance: 1pF typical

Mechanical Characteristics:

- JEDEC SOT23-6L Package
- Molding compound flamability rating: UL94V-0
- Packaging: Tape & Reel

B Schematic and Pin Configuration:



C Absolute Maximum Ratings:

Symbol	Rating	Unit
Peak Pulse Current (tp = 8/20 μs)	5	A
Operating Supply Voltage, VDD to GND	6	V
DC Voltage at any I/O Pin	(GND -0.5) to (VDD +0.5)	V
ESD per IEC 61000-4-2 (Air / Contact), I/O to GND	15 / 8	kV
ESD per IEC 61000-4-2 (Air / Contact), VDD to GND	15 / 8	kV
Operating Temperature	-55 to +85	$^{\circ}\text{C}$
Storage Temperature	-20 to +60	$^{\circ}\text{C}$

D Electrical Characteristics:

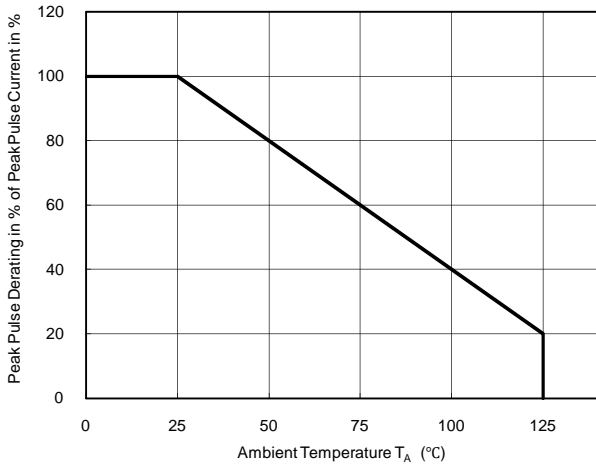
Properties	Test Conditions	Value min	Value typ	Value max	Unit
V_{RWM}	Pin 5 to Pin 2			5	V
V_{BV}	$I_{BV}=1\text{mA}$, Pin 5 to Pin 2	6.2			V
I_R	$V_{Pin5}=5\text{V}$, Pin 5 to Pin 2			2	μA
V_F	$I_F = 15\text{mA}$, Pin 2 to Pin 5		0.8	1.2	V
V_C	$I_{PP}=5\text{A}$, tp=8/20 μs , I/O to GND		9	10	V
$V_{Cl,I/O}$	$I_{TLP} = 17\text{A}$, I/O to GND		14		V
$C_{I/O}$	$V_{Pin5}=5\text{V}$, $V_{Pin2}=0\text{V}$, $V_{I/O}=2.5\text{V}$, f=1MHz, I/O to GND		1.0	1.5	pF
C_X	$V_{Pin5}=5\text{V}$, $V_{Pin2}=0\text{V}$, $V_{I/O}=2.5\text{V}$ f=1MHz, between I/O pins		0.1	0.2	pF

Specification for release

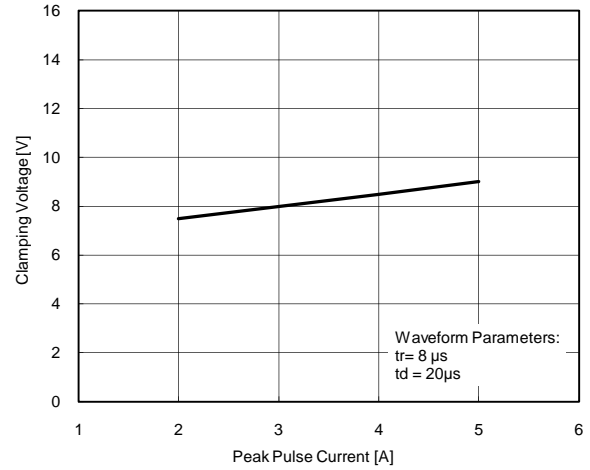
Customer : _____
Ordercode: **824001**
Description : **TVS Diode Array WE-TVS**

DATUM / DATE : 2010-01-27

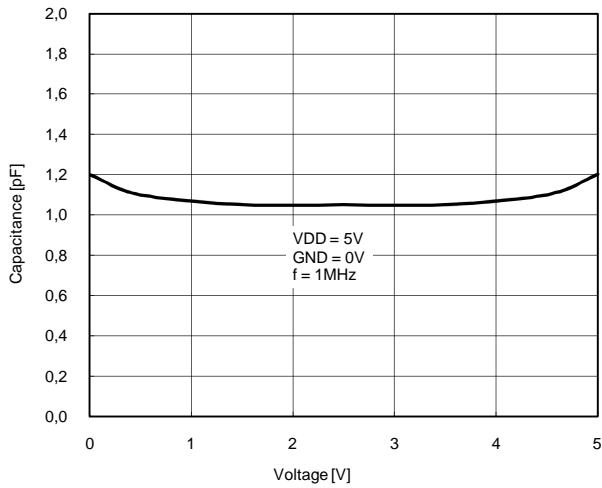
E Typical Characteristics:



Power Derating Curve



Clamping Voltage vs. Peak Pulse Current



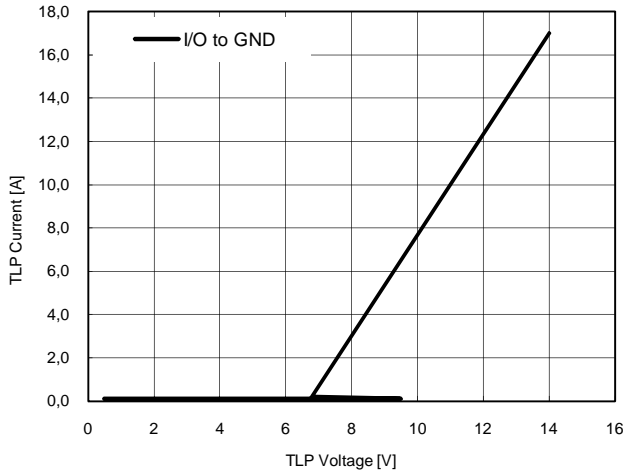
Variation of C_{IO} vs. V_{IO}

Specification for release

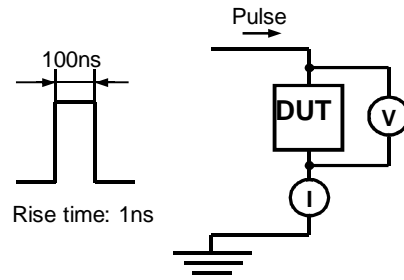
Customer : _____
 Ordercode: **824001**
 Description : **TVS Diode Array WE-TVS**

DATUM / DATE : 2010-01-27

E Typical Characteristic:

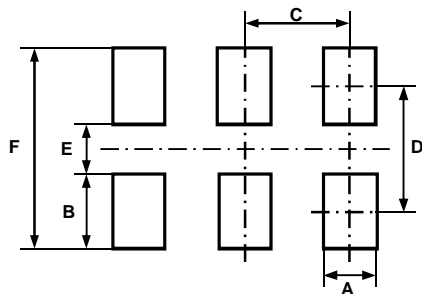


Transmission Line Pulsing (TLP) Measurement



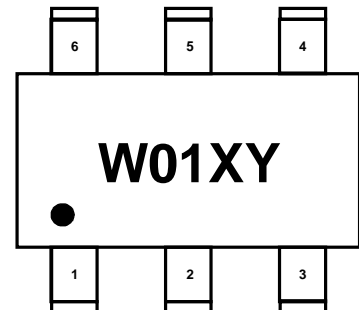
Transmission Line Pulsing System

F Recommended Land Layout:



A	0.60	mm
B	1.10	mm
C	0.95	mm
D	2.50	mm
E	1.40	mm
F	3.60	mm

G Body Marking:



W01: Device Code

X: Date Code

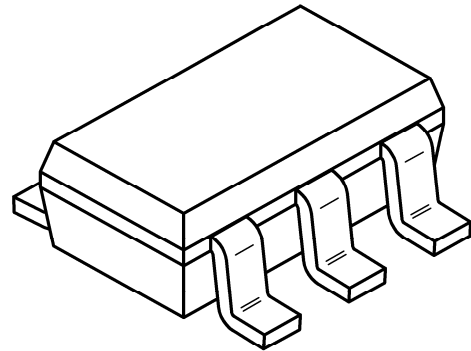
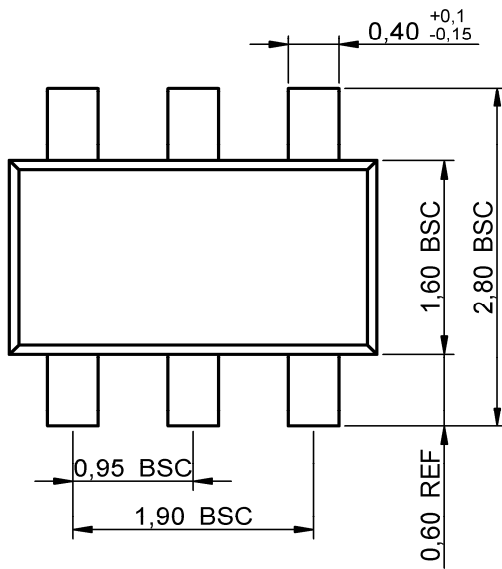
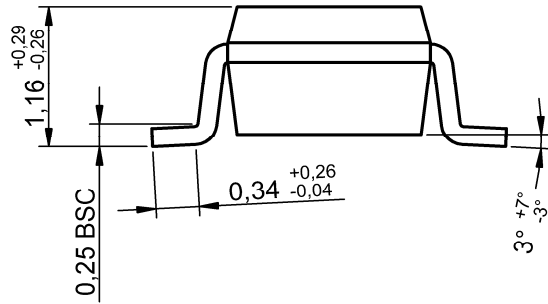
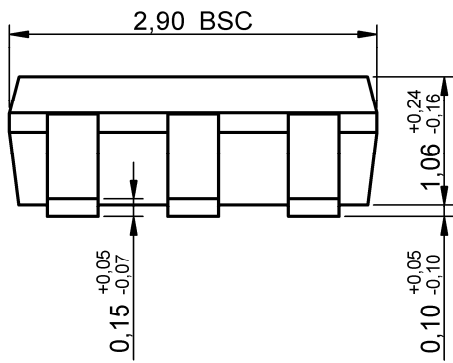
Y: Control Code

Specification for release

Customer :
Ordercode: **824001**
Description : **TVS Diode Array WE-TVS**

DATUM / DATE : 2010-01-27

H Dimensions:

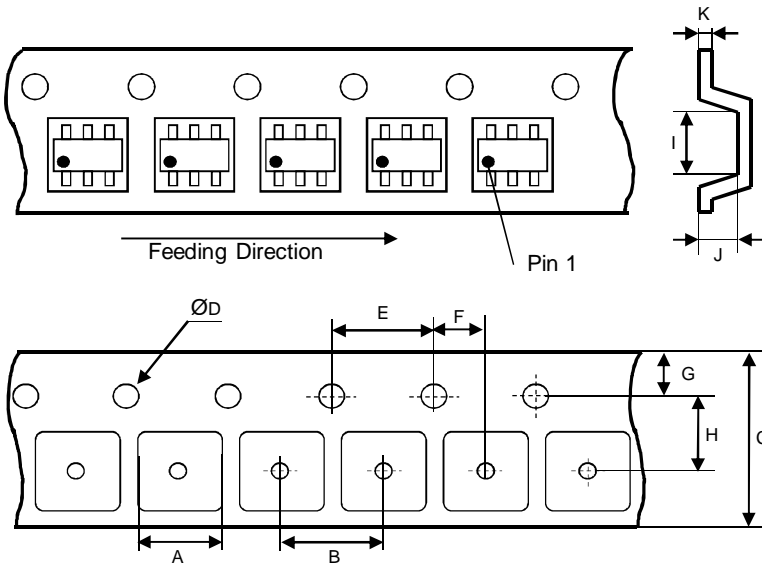


Scale - 10:1

Specification for release

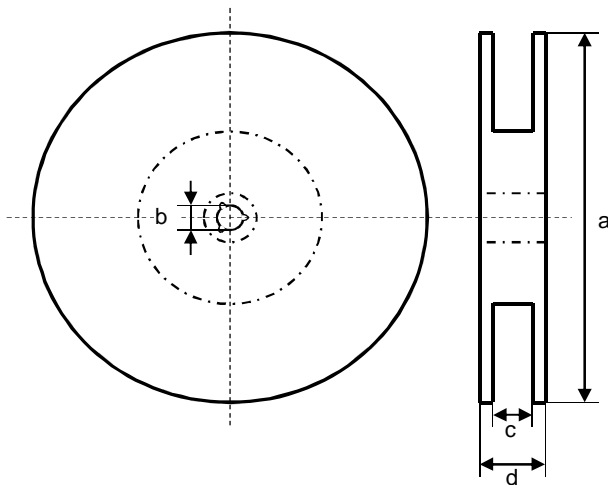
Customer : _____
 Ordercode: **824001**
 Description : **TVS Diode Array WE-TVS**

I Tape:

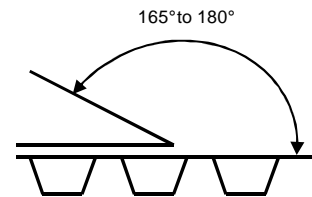


A	4.00 ± 0.10	mm
B	4.00 ± 0.10	mm
C	8.00 ± 0.20	mm
D	1.55 ± 0.05	mm
E	4.00 ± 0.10	mm
F	2.00 ± 0.05	mm
G	1.75 ± 0.10	mm
H	3.50 ± 0.05	mm
I	3.25 ± 0.15	mm
J	1.35 ± 0.15	mm
K	0.25 ± 0.02	mm

J Reel:



a	178.0 ± 2.0	mm
b	13.0 ± 0.8	mm
c	10.0 ± 1.5	mm
d	12.5 ± 2.0	mm



Quantity per Reel:	3000
--------------------	------