

Female Header

pitch 2.00mm (0.079") | Dual row | S.M.T. | Locating peg

CSFC201 Series

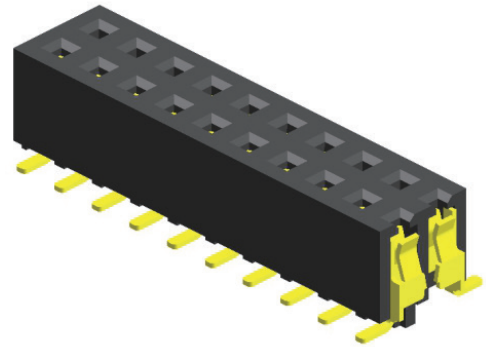
Specifications

Current Rating : 2.0 Ampere
 Insulation Resistance : 1000 MΩ Min
 Dielectric Withstanding : 500V AC
 Contact Resistance : 20 mΩ Max
 Operating Temperature : -40°C to +105°C

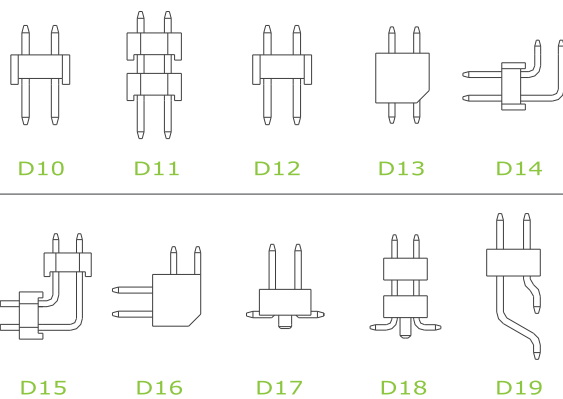
Materials

Contact Material : Phosphor Bronze
 Insulation Material : High Temperature Thermoplastic, 94V-0 Nylon

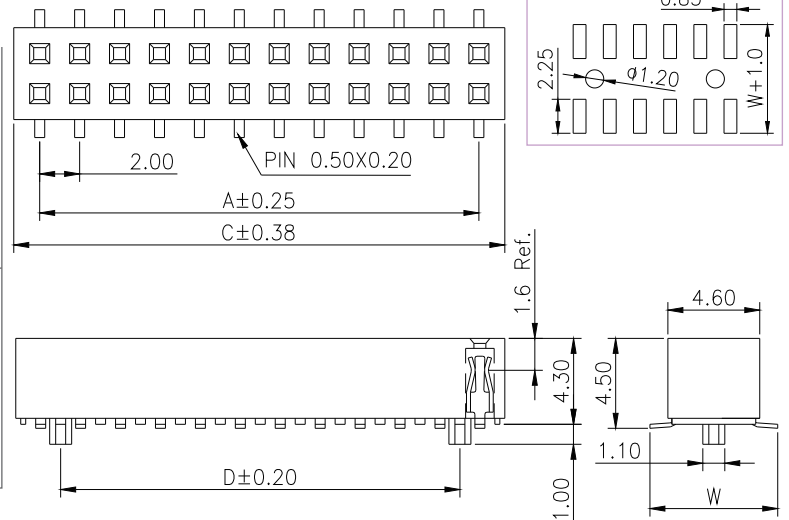
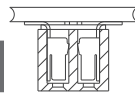
All materials must meet Greenconn's requirements for environmental protection.



Mating with



P.S. : Suggested mating pin length : 3.0 ~ 4.0 mm



* For Coded Dimension Not Inside The Table, Please Refer To "Ordering Information"

No. of Pins/Row	Dimension Information			No. of Pins/Row	Dimension Information			No. of Pins/Row	Dimension Information			No. of Pins/Row	Dimension Information		
	A	C	D		A	C	D		A	C	D		A	C	D
03	4.00	6.60	2.00	11	20.00	22.60	18.00	21	40.00	42.60	38.00	31	60.00	62.60	58.00
04	6.00	8.60	4.00	12	22.00	24.60	20.00	22	42.00	44.60	40.00	32	62.00	64.60	60.00
05	8.00	10.60	6.00	13	24.00	26.60	22.00	23	44.00	46.60	42.00	33	64.00	66.60	62.00
06	10.00	12.60	8.00	14	26.00	28.60	24.00	24	46.00	48.60	44.00	34	66.00	68.60	64.00
07	12.00	14.60	10.00	15	28.00	30.60	26.00	25	48.00	50.60	46.00	35	68.00	70.60	66.00
08	14.00	16.60	12.00	16	30.00	32.60	28.00	26	50.00	52.60	48.00	36	70.00	72.60	68.00
09	16.00	18.60	14.00	17	32.00	34.60	30.00	27	52.00	54.60	50.00	37	72.00	74.60	70.00
10	18.00	20.60	16.00	18	34.00	36.60	32.00	28	54.00	56.60	52.00	38	74.00	76.60	72.00
				19	36.00	38.60	34.00	29	56.00	58.60	54.00	39	76.00	78.60	74.00
				20	38.00	40.60	36.00	30	58.00	60.60	56.00	40	78.00	80.60	76.00

Ordering Information

CSFC2	<input type="checkbox"/> <input checked="" type="checkbox"/> <input type="checkbox"/>	-	<input type="checkbox"/> <input checked="" type="checkbox"/> <input type="checkbox"/>	<input type="checkbox"/> <input checked="" type="checkbox"/> <input type="checkbox"/>	<input type="checkbox"/> <input checked="" type="checkbox"/> <input type="checkbox"/>	R1AC
	Height Option (H) Standard		No. of Pins per Row	Standard Plating	Pin Length (W)	
	<input type="checkbox"/> 01		<input type="checkbox"/> 03	<input type="checkbox"/> 02 : Gold Flash	<input type="checkbox"/> 002 : W=6.40	
			<input type="checkbox"/> 40	Selective Plating	<input type="checkbox"/> 007 : W=7.20	
				<input type="checkbox"/> 01 : Tin	For special length requirement Please contact our sales personnel	
				<input type="checkbox"/> 05 : Gold Flash / Tin		

Standard Packaging : Tube