

# Female Header

pitch 2.00mm (0.079") | Single row | R/A

CSFB107 Series

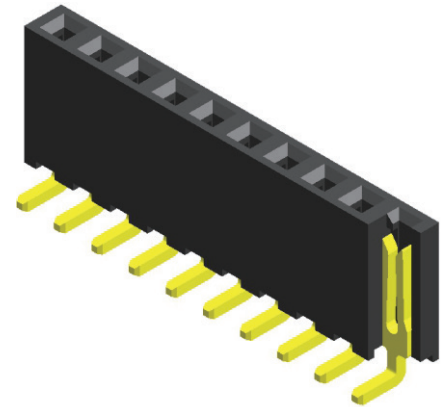
## Specifications

Current Rating : 2.0 Ampere  
 Insulation Resistance : 1000 MΩ Min  
 Dielectric Withstanding : 500V AC  
 Contact Resistance : 20 mΩ Max  
 Operating Temperature : -40°C to +105°C

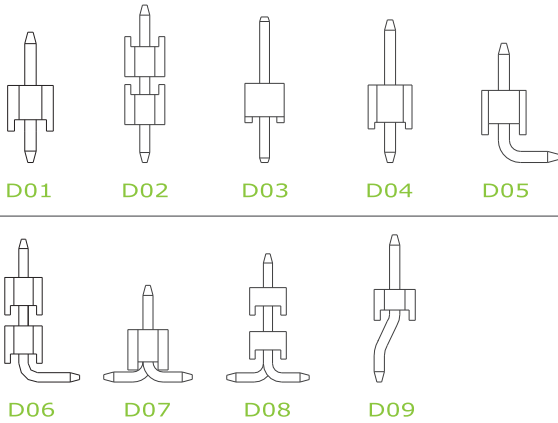
## Materials

Contact Material : Phosphor Bronze  
 Insulation Material : High Temperature Thermoplastic, 94V-0 LCP

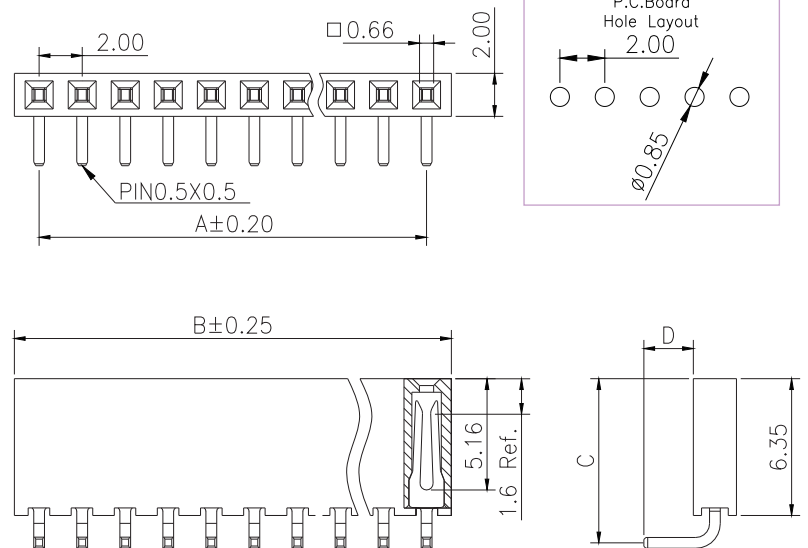
All materials must meet Greenconn's requirements for environmental protection.



## Mating with



P.S. : Suggested mating pin length : 3.0 ~ 4.9 mm



\* For Coded Dimension Not Inside The Table, Please Refer To "Ordering Information"

No. of Pins/Row	Dimension Information			No. of Pins/Row	Dimension Information			No. of Pins/Row	Dimension Information		
	A	B			A	B			A	B	
02	2.00	4.30		11	20.00	22.30		21	40.00	42.30	
03	4.00	6.30		12	22.00	24.30		22	42.00	44.30	
04	6.00	8.30		13	24.00	26.30		23	44.00	46.30	
05	8.00	10.30		14	26.00	28.30		24	46.00	48.30	
06	10.00	12.30		15	28.00	30.30		25	48.00	50.30	
07	12.00	14.30		16	30.00	32.30		26	50.00	52.30	
08	14.00	16.30		17	32.00	34.30		27	52.00	54.30	
09	16.00	18.30		18	34.00	36.30		28	54.00	56.30	
10	18.00	20.30		19	36.00	38.30		29	56.00	58.30	
				20	38.00	40.30		30	58.00	60.30	
								31	60.00	62.30	
								32	62.00	64.30	
								33	64.00	66.30	
								34	66.00	68.30	
								35	68.00	70.30	
								36	70.00	72.30	
								37	72.00	74.30	
								38	74.00	76.30	
								39	76.00	78.30	
								40	78.00	80.30	

## Ordering Information

Standard Packaging : Tube

CSFB1  -     
 Height Option (H)  No. of Pins per Row  Standard Plating  Pin Length (C/D)  : C=7.60 / D=2.30  
 Selective Plating  : Tin For special length requirement  
 : Gold Flash / Tin Please contact our sales personnel