

Female Header

pitch 2.00mm (0.079") | Single row | R/A

CSFB102 Series

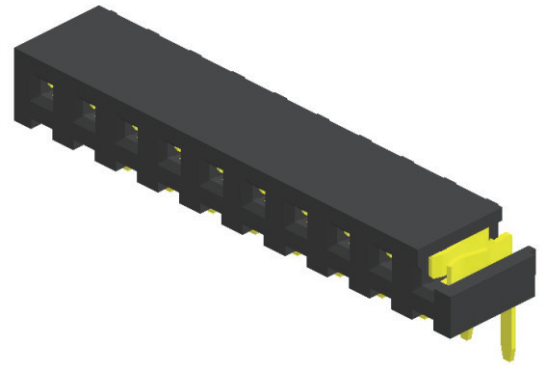
Specifications

Current Rating : 2.0 Ampere
 Insulation Resistance : 1000 MΩ Min
 Dielectric Withstanding : 500V AC
 Contact Resistance : 20 mΩ Max
 Operating Temperature : -40°C to +105°C

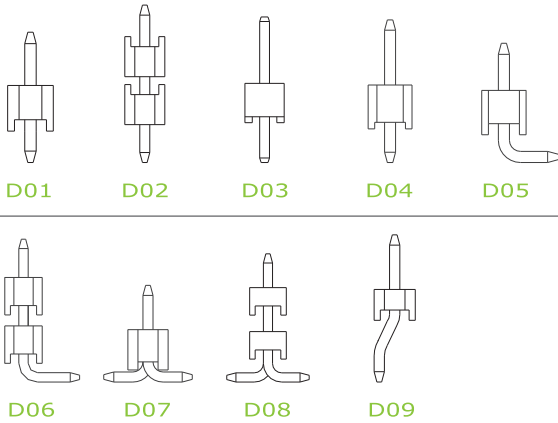
Materials

Contact Material : Phosphor Bronze
 Insulation Material : High Temperature Thermoplastic, 94V-0 Nylon

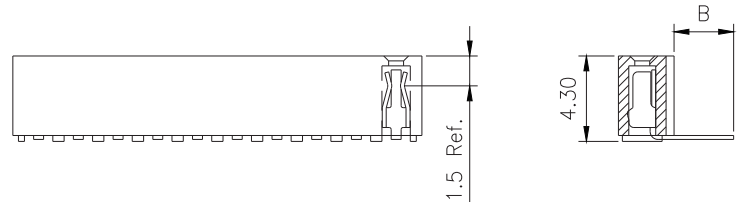
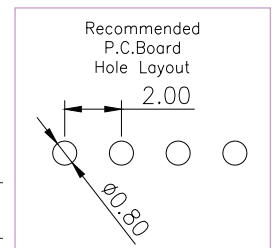
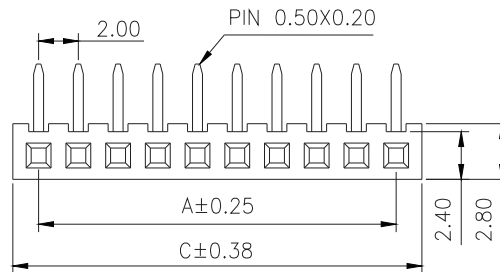
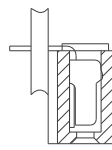
All materials must meet Greenconn's requirements for environmental protection.



Mating with



P.S. : Suggested mating pin length : 3.0 ~ 4.0 mm



* For Coded Dimension Not Inside The Table, Please Refer To "Ordering Information"

No. of Pins/Row	Dimension Information			No. of Pins/Row	Dimension Information			No. of Pins/Row	Dimension Information			No. of Pins/Row	Dimension Information		
	A	C			A	C			A	C			A	C	
02	2.00	4.60		11	20.00	22.60		21	40.00	42.60		31	60.00	62.60	
03	4.00	6.60		12	22.00	24.60		22	42.00	44.60		32	62.00	64.60	
04	6.00	8.60		13	24.00	26.60		23	44.00	46.60		33	64.00	66.60	
05	8.00	10.60		14	26.00	28.60		24	46.00	48.60		34	66.00	68.60	
06	10.00	12.60		15	28.00	30.60		25	48.00	50.60		35	68.00	70.60	
07	12.00	14.60		16	30.00	32.60		26	50.00	52.60		36	70.00	72.60	
08	14.00	16.60		17	32.00	34.60		27	52.00	54.60		37	72.00	74.60	
09	16.00	18.60		18	34.00	36.60		28	54.00	56.60		38	74.00	76.60	
10	18.00	20.60		19	36.00	38.60		29	56.00	58.60		39	76.00	78.60	
				20	38.00	40.60		30	58.00	60.60		40	78.00	80.60	

Ordering Information

Standard Packaging : Tube

CSFB1 - R1AC
 Height Option (H)
 No. of Pins per Row
 Standard Plating : Gold Flash
 Selective Plating : Tin : Gold Flash / Tin
 Pin Length (B) : B=3.00
 For special length requirement Please contact our sales personnel