

A

B

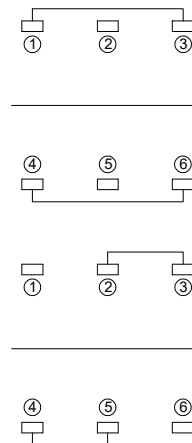
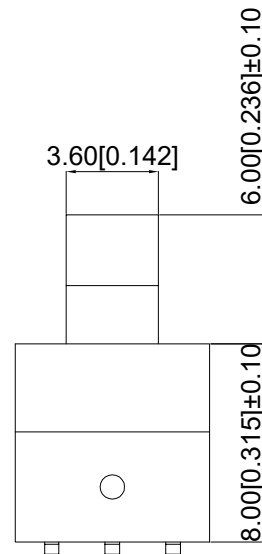
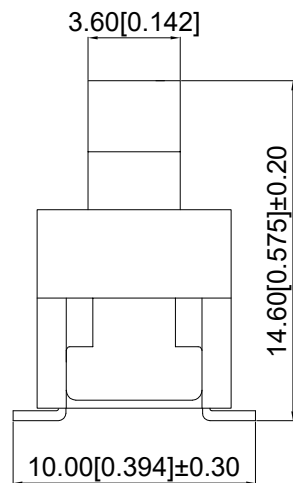
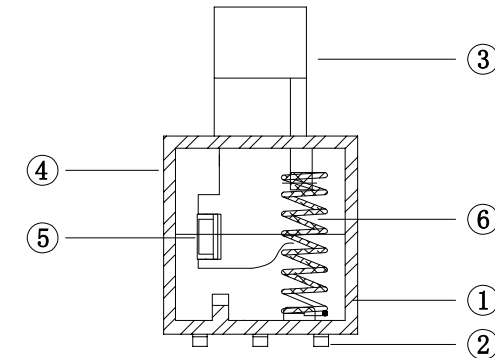
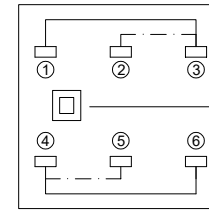
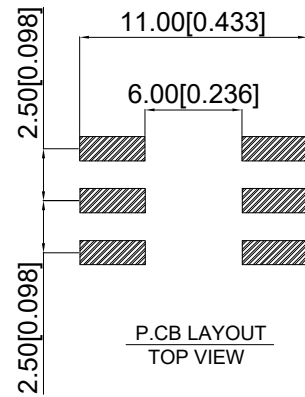
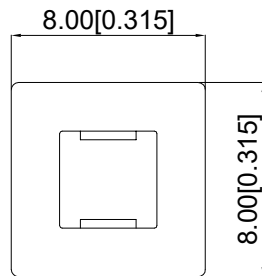
C

D

E

F

G



常态: 1-3导通 4-6导通
Normal: 1-3 on 4-6 on
按下: 2-3导通 4-5导通
Press: 2-3 on 4-5 on

Technical parameter

技术参数

1. Rated current: 100mA 30V DC
1. 额定电流: 100mA 30V DC
2. Contact resistance: $\leq 10 \Omega$
2. 接触电阻: $\leq 10 \Omega$
3. Operating force: 260gf \pm 50gf
3. 操作力: 260gf \pm 50gf
4. Maximum stroke: 3.0 \pm 0.2mm

4. 最大行程: 3.0 \pm 0.2mm
5. Insulation resistance: $\geq 100M \Omega$
5. 绝缘电阻: $\geq 100M \Omega$
6. Electric strength: AC250V 50Hz 1min
6. 抗电强度: AC250v 50Hz 1Min
7. Service life: 10000 times
7. 寿命: 10000次
8. Switch similar: No lock
8. 开关类似: 无锁

ITEM	Name	Materials	NUM	COLOR
6	Spring 弹簧	SUS 不锈钢丝	1	Natural color 本色
5	reed 簧片	Composite silver 复合银	2	Natural color 本色
4	Upper cover 上盖	PPA	1	black 黑色
3	handle 手柄	PPA	1	black 黑色
2	terminal 端子	Brass 黄铜	6	Natural color/silver 本色/镀银
1	Pedestal 基座	PPA	1	black 黑色

REV	DATE	REVISION	DESCRIPTION	ISSUE
A4				
A3				
A2				
A1				



COMMON TOLERANCE

X.XX	± 0.10
X.X	± 0.15
X	± 0.25
ANGULAR	—

UNIT

MM

PROJECTED



PRODUCT NAME:

DRAWN BY

FUYUAN

CHECKED BY

COCO

MODEL NO: BTSA-N-S-18

DATE

2019

APPROVAL B

ALEN

Https: www.rocpcu.tw

ROCPCU TECHNOLOGY CO.,LTD

Copies are issued in strict confidence and shall not be reproduced or copied, or used as the basic of manufacture or sale of apparatus without permission