

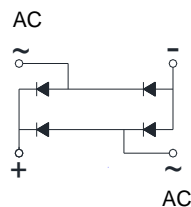
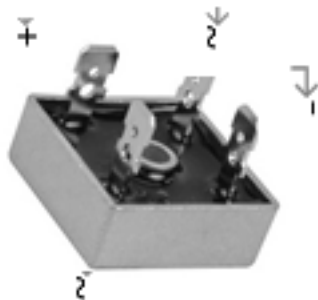
SILICON BRIDGE RECTIFIERS

REVERSE VOLTAGE - 50 to 1000Volts

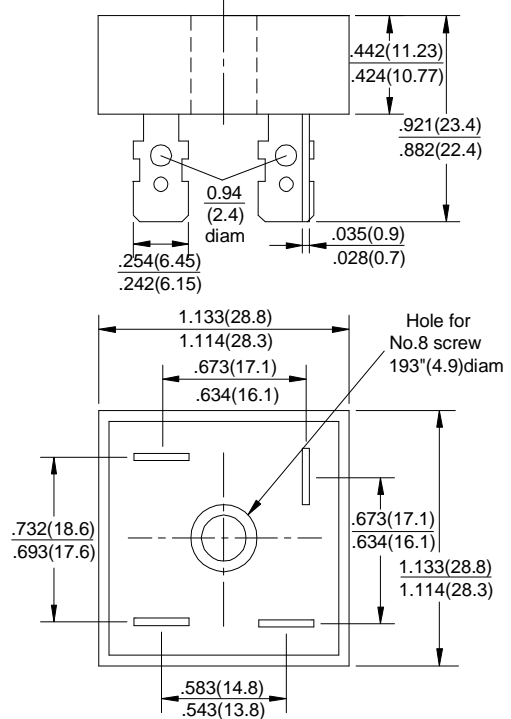
FORWARD CURRENT - 10/15/25/35/50 Amperes

FEATURES

- Surge overload -240~500 Amperes peak
- Low forward voltage drop
- Mounting Position : Any
- Electrically isolated base -2000 Volts
- Solderable 0.25" FAST ON terminals
- Materials used carries U/L recognition



KBPC



Dimensions in inches and (milimeters)

MAXIMUM RATINGS AND ELECTRICAL CHARACTERISTICS

Rating at 25°C ambient temperature unless otherwise specified.

Resistive or inductive load 60Hz.

For capacitive load current by 20%

CHARACTERISTICS	SYMBOL	KBPC		KBPC		KBPC		KBPC		KBPC		KBPC		UNIT		
		10005		1001		1002		1004		1006		1008			1010	
		15005		1501		1502		1504		1506		1508			1510	
		25005		2501		2502		2504		2506		2508			2510	
		35005		3501		3502		3504		3506		3508			3510	
		50005		5001		5002		5004		5006		5008			5010	
Maximum Recurrent Peak Reverse Voltage	VRRM	50		100		200		400		600		800		1000		V
Maximum RMS Bridge Input Voltage	VRMS	35		70		140		280		420		560		700		V
Maximum Average Forward Rectified Output Current @Tc=55℃	I(AV)	KBPC	10	KBPC	15	KBPC	25	KBPC	35	KBPC	50	50		A		
Peak Forward Surge Current 8.3ms Single Half Sine-Wave Super Imposed on Rated Load	IFSM	10	240	15	300	25	400	35	400	50	500	A				
Maximum Forward Voltage Drop Per Element at 5.0/7.5/12.5/17.5/25.0A Peak	VF	1.1												V		
Maximum Reverse Current at Rate DC Blocking Voltage Per Element @TJ=25℃	IR	10												μA		
Operating Temperature Range	TJ	-55 to +150												℃		
Storage Temperature Range	TSTG	-55 to +150												℃		

SILICON BRIDGE RECTIFIERS

REVERSE VOLTAGE - 50 to 1000Volts

FORWARD CURRENT - 10/15/25/35/50 Amperes

FIG.1-MAXIMUM FORWARD SURGE CURRENT

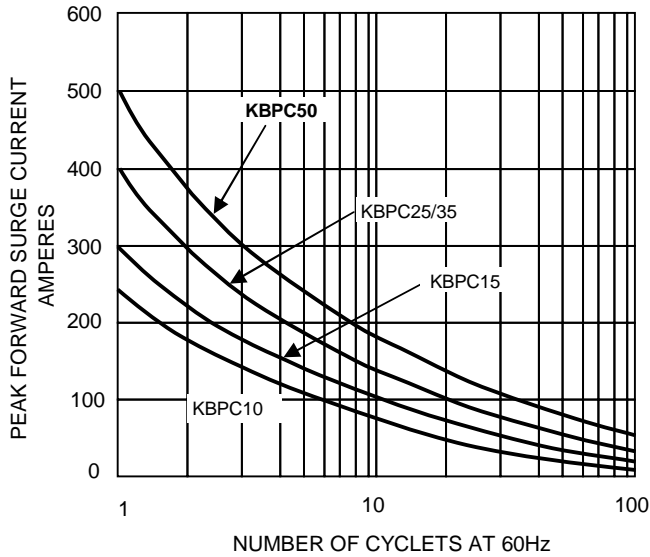


FIG.2- DERATING CURVE
OUTPUT RECTIFIED CURRENT

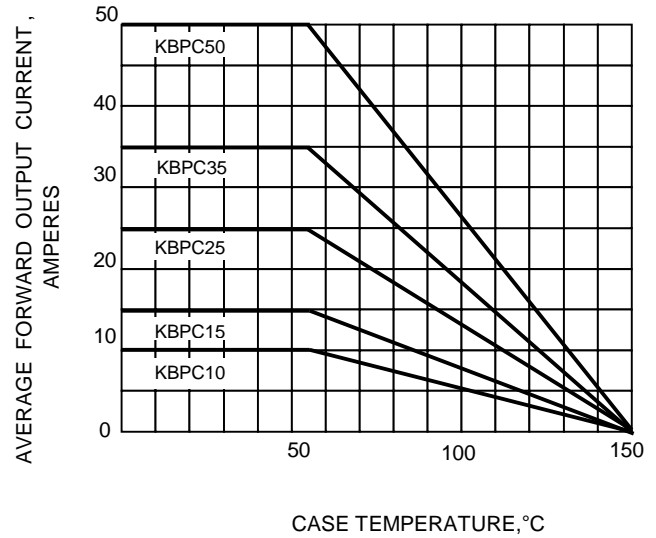


FIG.3-TYPICAL FORWARD
CHARACTERISTICS

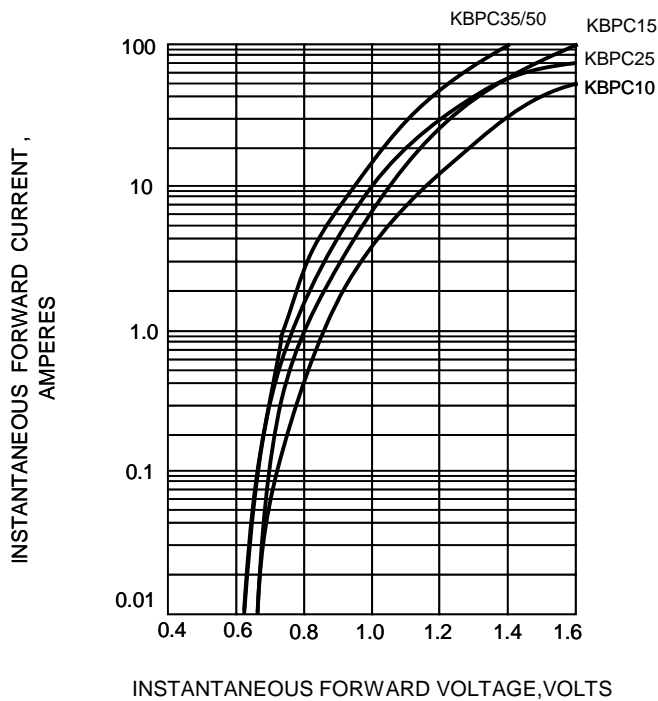


FIG.4-TYPICAL REVERSE
CHARACTERISTICS

