

SCHEMATIC (NON-SHORTING)

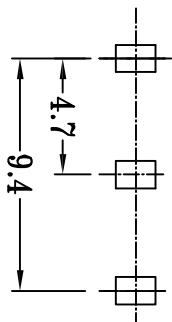
MODEL CODE

SS-12D10

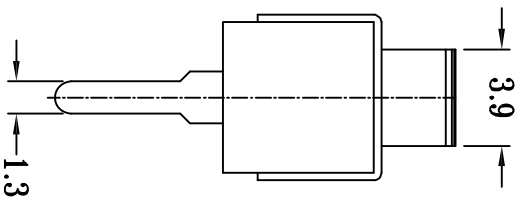
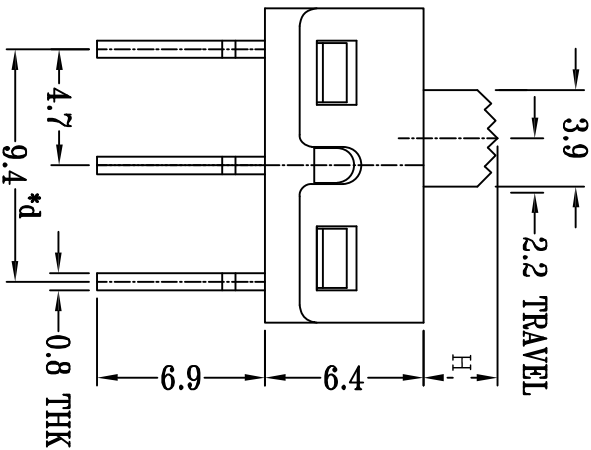
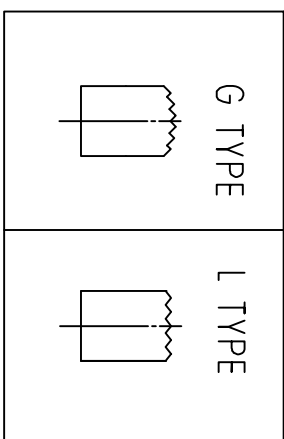
Knob Type
L
G

H (mm)
2 ~ 12

Colour
Blank: Standard Black
R.Red



**P.C.B LAYOUT
BOTTOM VIEW**



- Typical Specifications
1. Rating : AC 125V 3A
 2. Insulation Resistance:1,000M min
 3. Dielectric Strength:1,500V RMS
 4. Operating Life : 10,000 cycles

ITEM	PAPT NAME	TER,NO	QTY	MATERIAL	FINISHING	REMARK
⑤	Terminal	—	3	Copper Alloy	silver plated	—
④	Contact	—	1	Copper Alloy	silver plated	—
③	Housing	—	1	Stainless Steel	—	—
②	Slide Handle	—	1	Nylon	—	—
①	Case	—	1	Dialyl Prthalate (DAP)	—	—

DSND	DATE	SCALE: N/A	MODEL TYPE: SLIDE SWITCH
DWN	DATE	VIEW:	PART NO.:
CHKD	DATE	UNIT: mm	DWG NO.:
APPD	DATE	SIZE: A4	SS-12D10XXX

ΔX	REVISIONS	DATE	REVISED	APPROVED	UNSPECIFIED TOLERANCES
ΔX	ANGULAR				±5°
ΔX					±0.2mm
ΔX					±0.1mm
ΔX					±0.05mm
MARK	DESCRIPTION				

XKB INDUSTRIAL PRECISION CO., LIMITED			
WEIGHT	SHEET	REVISION	
1.0g	1/1	A0	