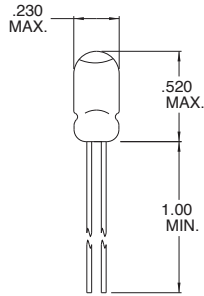
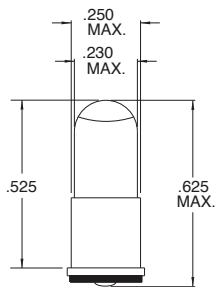


TL-1 3/4 Wire Terminal Lens End



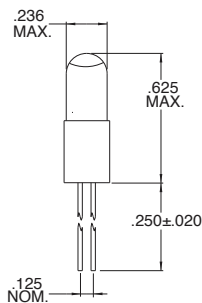
| Part Number | Design Voltage | Amps | Spot Characteristic | Life Hours | Filament Type |
|-------------|----------------|------|---------------------|------------|---------------|
| CM8-374 | 2.5 | .35 | B* | 3,000 | C-2R |
| CM1750 | 2.5 | .40 | None | 3,000 | C-2R |
| CM1948 | 2.5 | .40 | None | 7,500 | C-2R |
| CM8426 | 5.0 | .18 | None | 10,000 | C-2R |

TL-1 3/4 Midget Flange Base Lens End



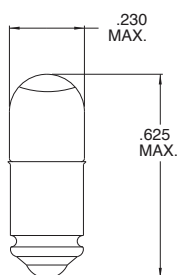
| Part Number | Design Voltage | Amps | Spot Characteristic | Life Hours | Filament Type |
|-------------|----------------|------|---------------------|------------|---------------|
| CM8-3374 | 2.5 | .35 | B* | 10,000 | C-2R |
| CM8-443 | 5.0 | .22 | None | 10,000 | C-2R |
| CM3903 | 14.0 | .08 | None | 1,000 | C-2F |

TL-1 3/4 Bi-Pin Base (.125") Lens End



| Part Number | Design Voltage | Amps | Spot Characteristic | Life Hours | Filament Type |
|-------------|----------------|------|---------------------|------------|---------------|
| CM761 | 2.5 | .35 | B* | 10,000 | C-2R |
| CM8261 | 2.5 | .35 | None | 10,000 | C-2R |
| CM7426 | 5.0 | .22 | None | 10,000 | C-2R |

TL-1 3/4 Midget Groove Base Lens End



| Part Number | Design Voltage | Amps | Spot Characteristic | Life Hours | Filament Type |
|-------------|----------------|------|---------------------|------------|---------------|
| CM8-373 | 2.5 | .35 | B* | 10,000 | C-2R |
| CM3901 | 5.0 | .18 | None | 10,000 | C-2R |
| CM3904 | 14.0 | .08 | None | 1,000 | C-2F |

* Reference page 2-61 for applicable spot characteristics.

Mouser Electronics

Authorized Distributor

Click to View Pricing, Inventory, Delivery & Lifecycle Information:

VCC:

8-374