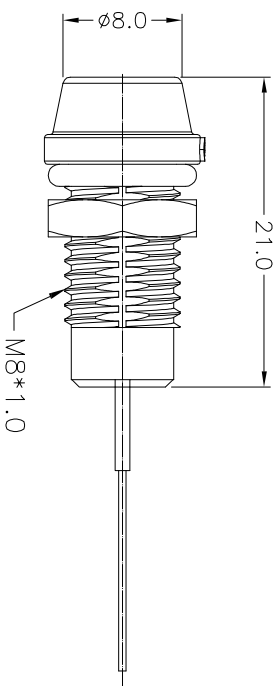
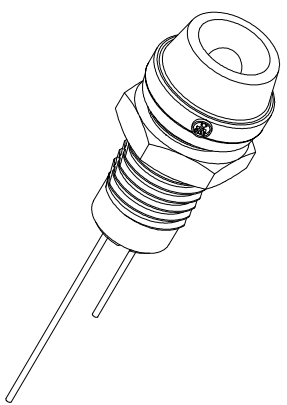
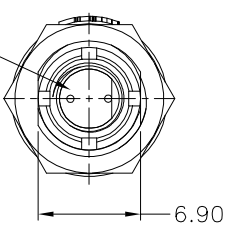
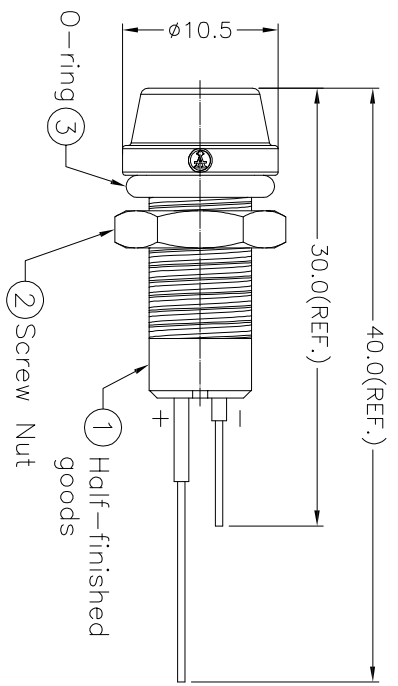
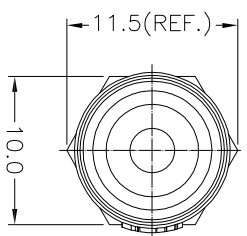


Recommended Panel Cut-Out



- Notes:
- Waterproof Rate: IP67
 - LED Holder: PC+ABS, Black
 - LED Ø3mm, Red
 - O-ring: EPDM, Black
 - Screw Nut: Nylon + GF
 - Operating Temperature: -40°C ~ +80°C
 - For Panel Thickness 6.5mm Max.
 - Forward Voltage: Red Typ. 2.2V/ Max. 2.4(V).
 - Forward Current: Red Max. 30mA.
 - Reverse Voltage: DC 5V
 - Luminous Intensity: Min. 1080/ Typ. 2000(Mcd)



RoHS compliant
Unit: mm

Scale	Free TOLERANCE
.X	±0.25
.XX	±0.1
.XXX	±0.05
DIM	TOL
Angle	±1°

Id.	Modification	Date	Name
①	Add the Logo "A"	27.06.2016	Winnie
②	Add forward bias current/voltage	03.09.2018	Segal
③	Drawn	11.03.2014	Winnie



Customer-No.	ASSMANN WSW-No.	Drawing-No.
	A-LED8-1RAAS-PR7-1	ASS 6232 CO

Name	Date	Drawn	Approved
Winnie	11.03.2014	Winnie	03.09.2018
Amy			

1	2	3	4	5	6	7	A
1	2	3	4	5	6	7	B
1	2	3	4	5	6	7	C
1	2	3	4	5	6	7	D
1	2	3	4	5	6	7	E
1	2	3	4	5	6	7	F
1	2	3	4	5	6	7	G
1	2	3	4	5	6	7	H