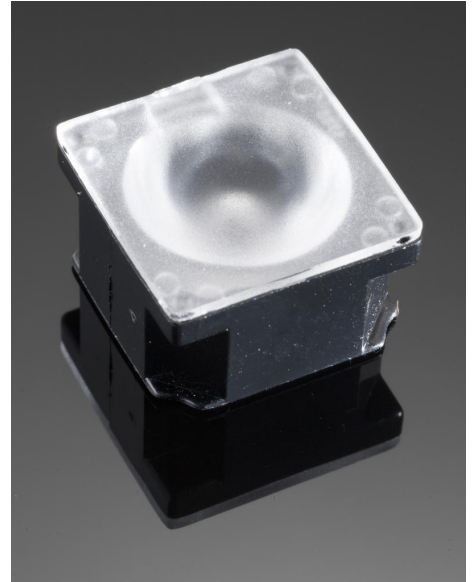


DETAILS

Product Number	CA11766_LAURA-WW
Family	Laura
Type	Assembly
Color	black
Diameter	21.6 x 21.6 mm
Height	13.1 mm
Style	square
Optic Material	PMMA
Holder Material	PC
Fastening	tape
Status	ready
ROHS Compliant	Yes
Date Updated	16/10/2014

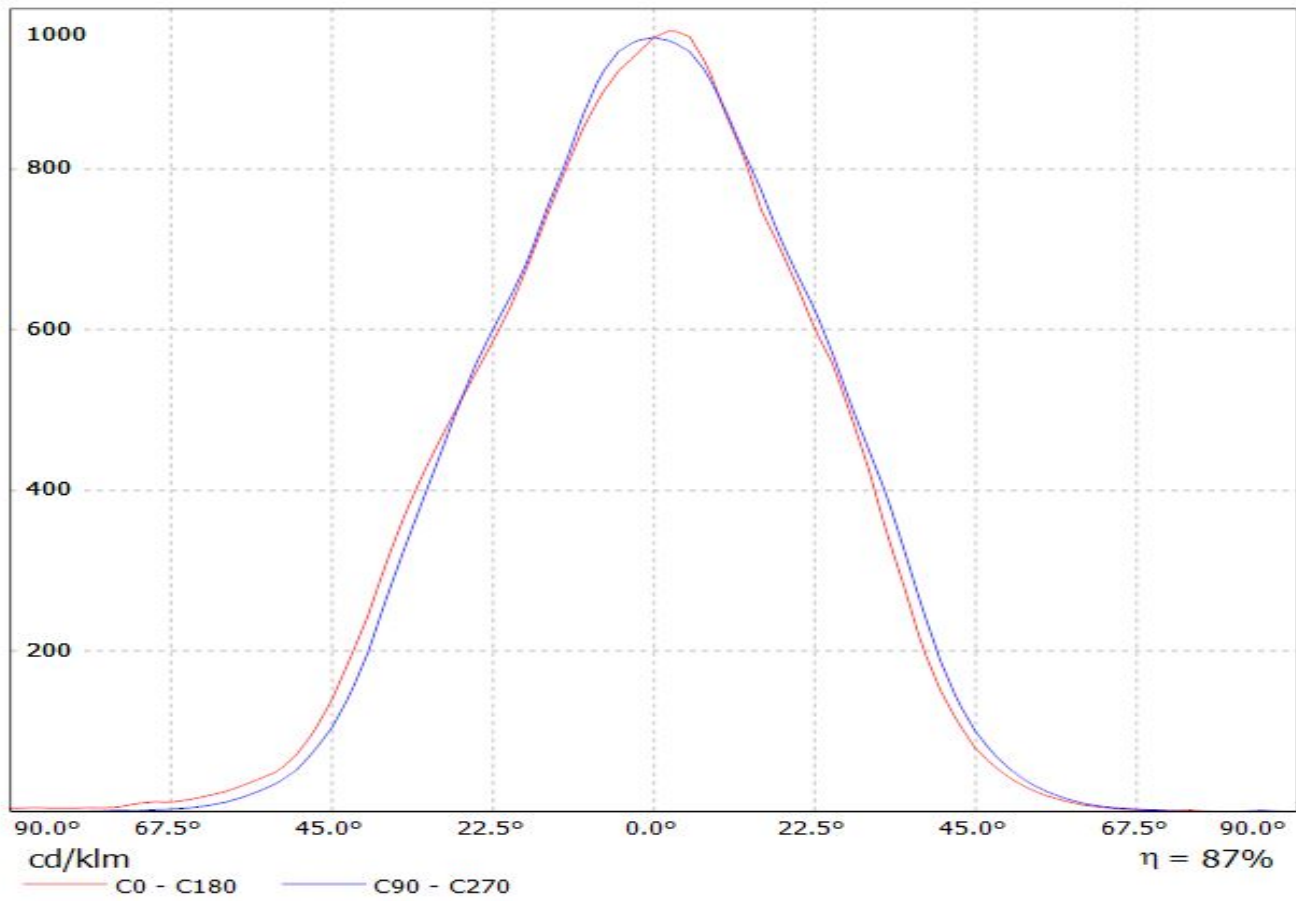


OPTICAL PROPERTIES

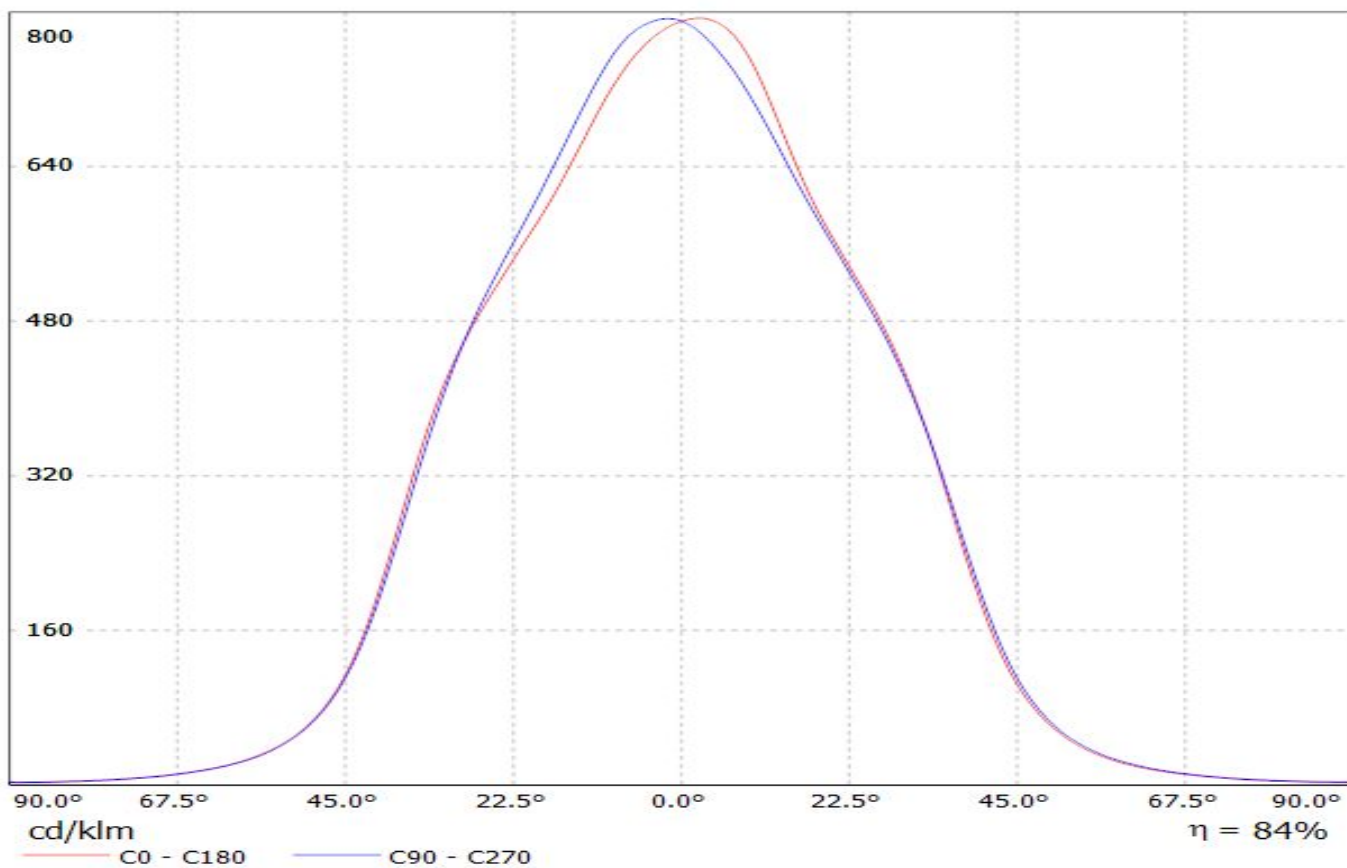
LED	Viewing Angle	Light Beam	Efficiency	cd/lm	Connector
XT-E	57 deg	Very Wide	87 %	0.960	-
Z5	62 deg	Very Wide	-	-	-
XP-G2	64 deg	Very Wide	84 %	0.800	-
XP-E	66 deg	Very Wide	86 %	0.700	-
XP-G	68 deg	Very Wide	86 %	0.610	-
H35C1 (LEMWA33)	68 deg	Very Wide	83 %	0.800	-

Luminaire: Ledil Oy CA11766 LAURA-WW (XT-E)

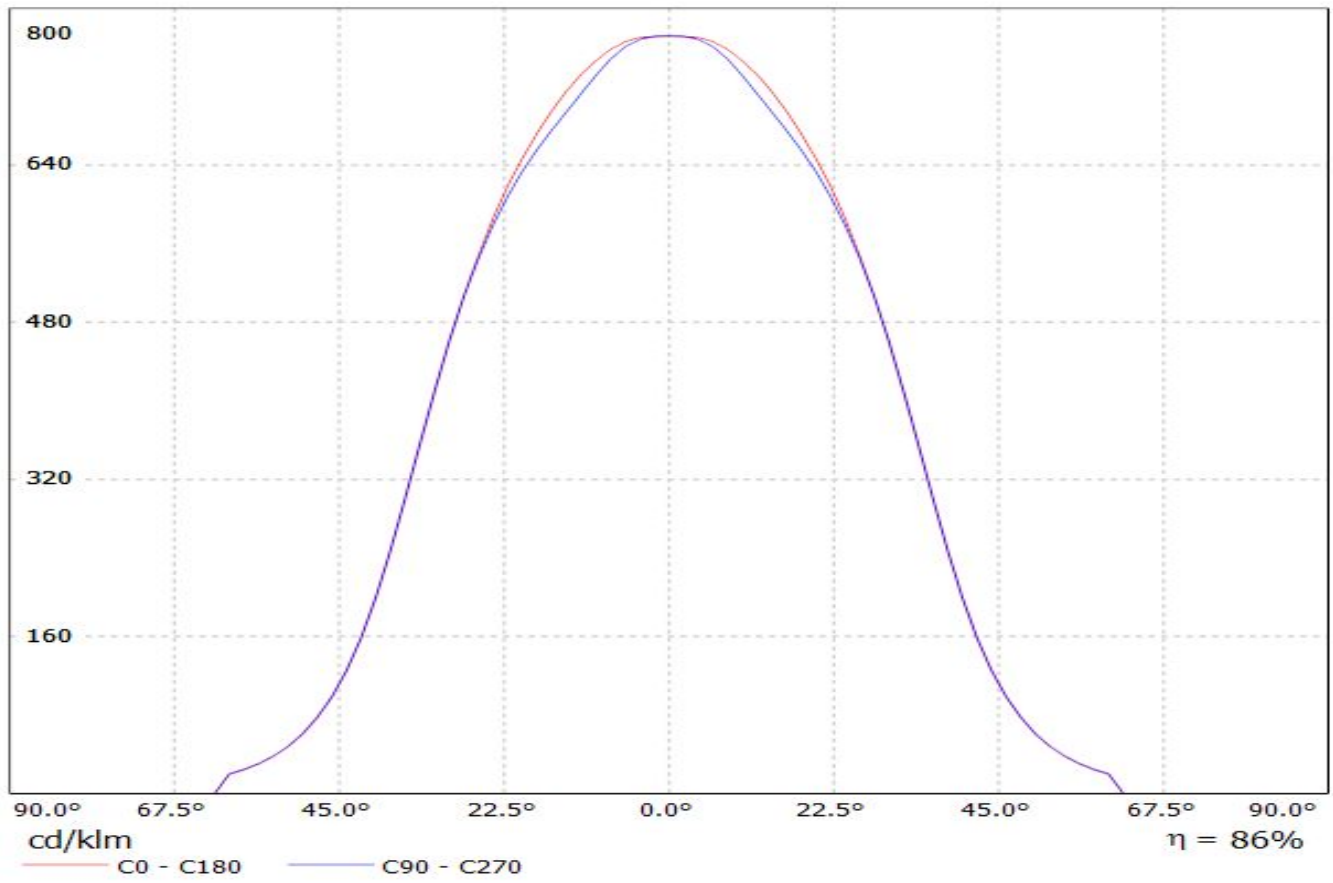
Lamps: 1 x Cree XT-E (XTEAWT-00-0000-00000HBE8) 77lm @ 250mA CCT=2800K P=0.97W I=250mA



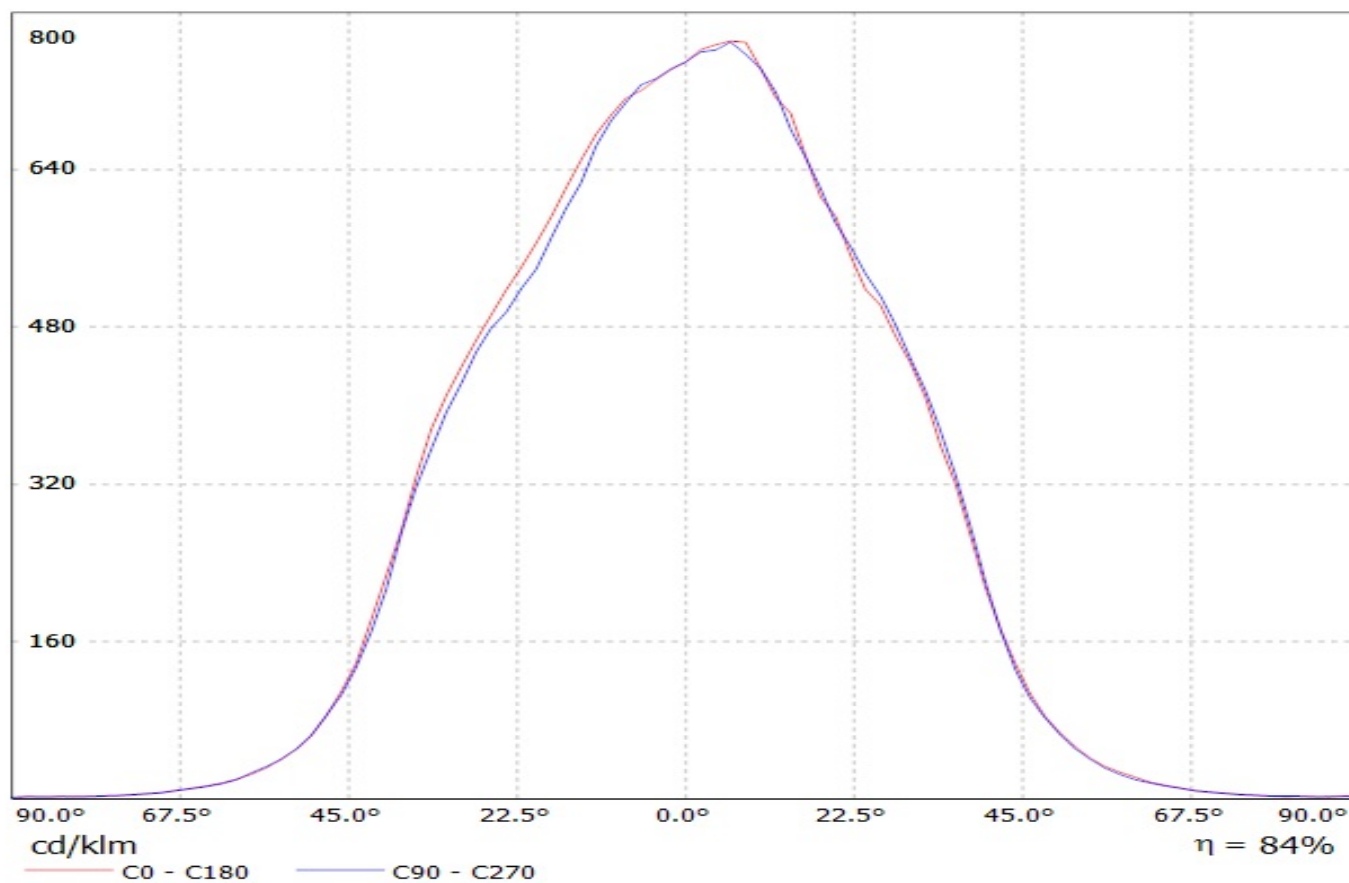
Luminaire: LEDiL Oy CA11766_LAURA-WW_(XP-G2)
Lamps: 1 x Cree XP-G2 XPGBWT-L1-0000-00FE34 102lm@250mA CCT:5000K



Luminaire: Ledil Oy CA11766_Laura-WW-XP-tape CA11766_Laura-WW-XP-tape
Lamps: 1 x Cree XP-E white

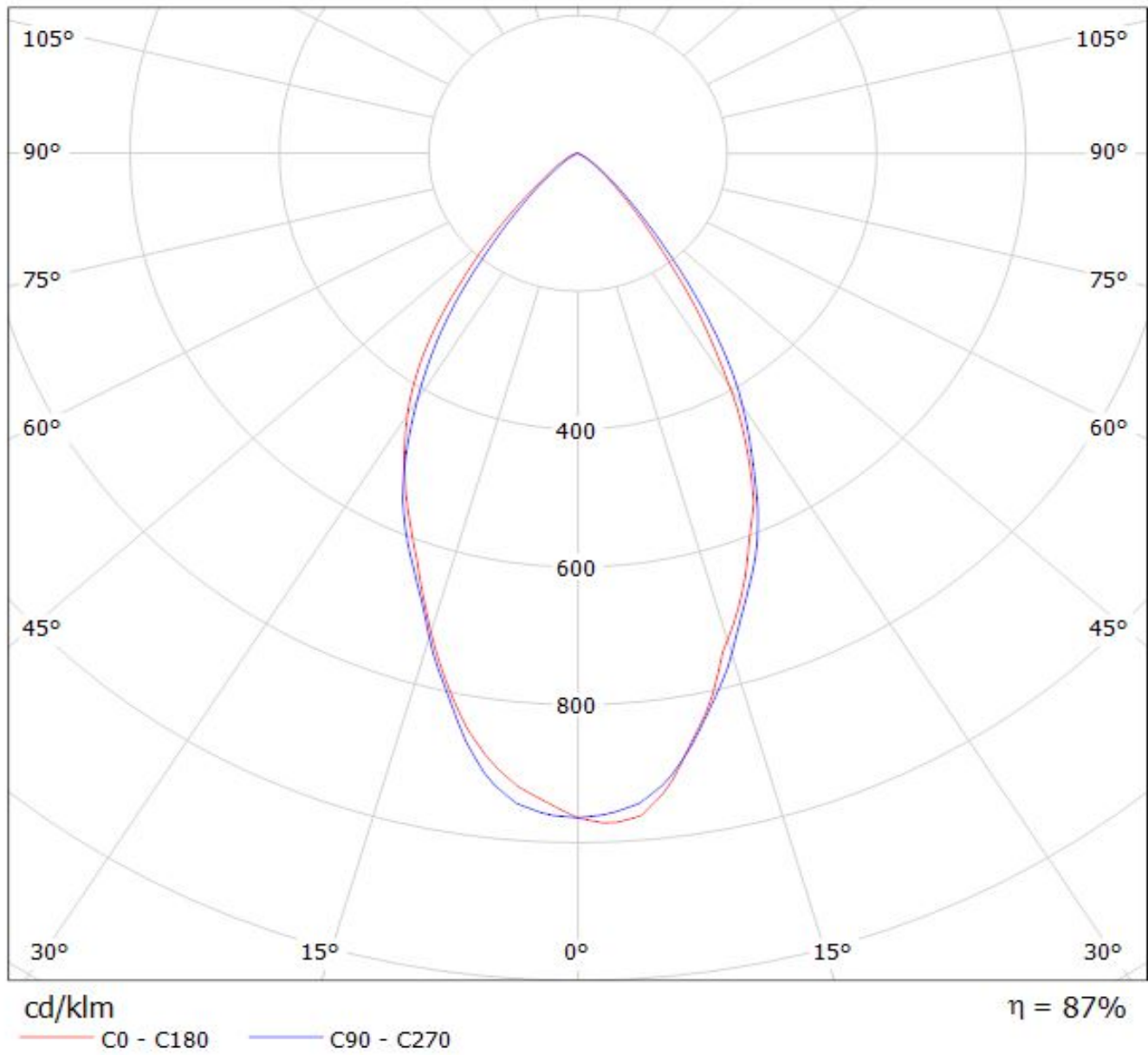


Luminaire: Ledil Oy CA11766_LAURA-WW_(3535_Ceramic_gen2) Efficiency=83%
Lamps: 1 x LG 3535 Ceramic gen2 (PKG5700K) 116lm @ 250mA CCT=6200K P=0.7 I=250mA



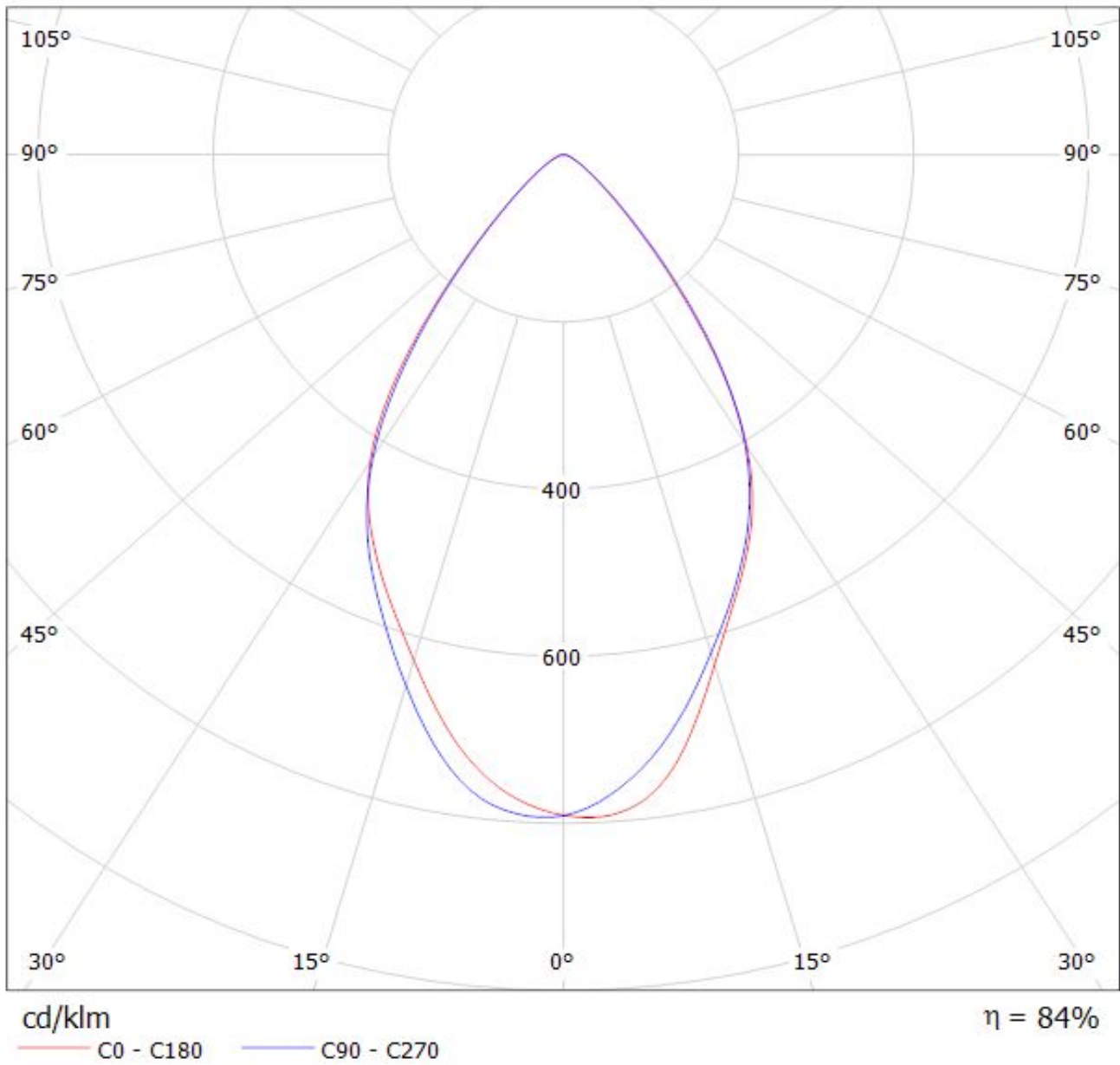
Luminaire: Ledil Oy CA11766_LAURA-WW_(XT-E)

Lamps: 1 x Cree XT-E (XTEAWT-00-0000-00000HBE8) 77lm @ 250mA CCT=2800K P=0.97W I=250mA

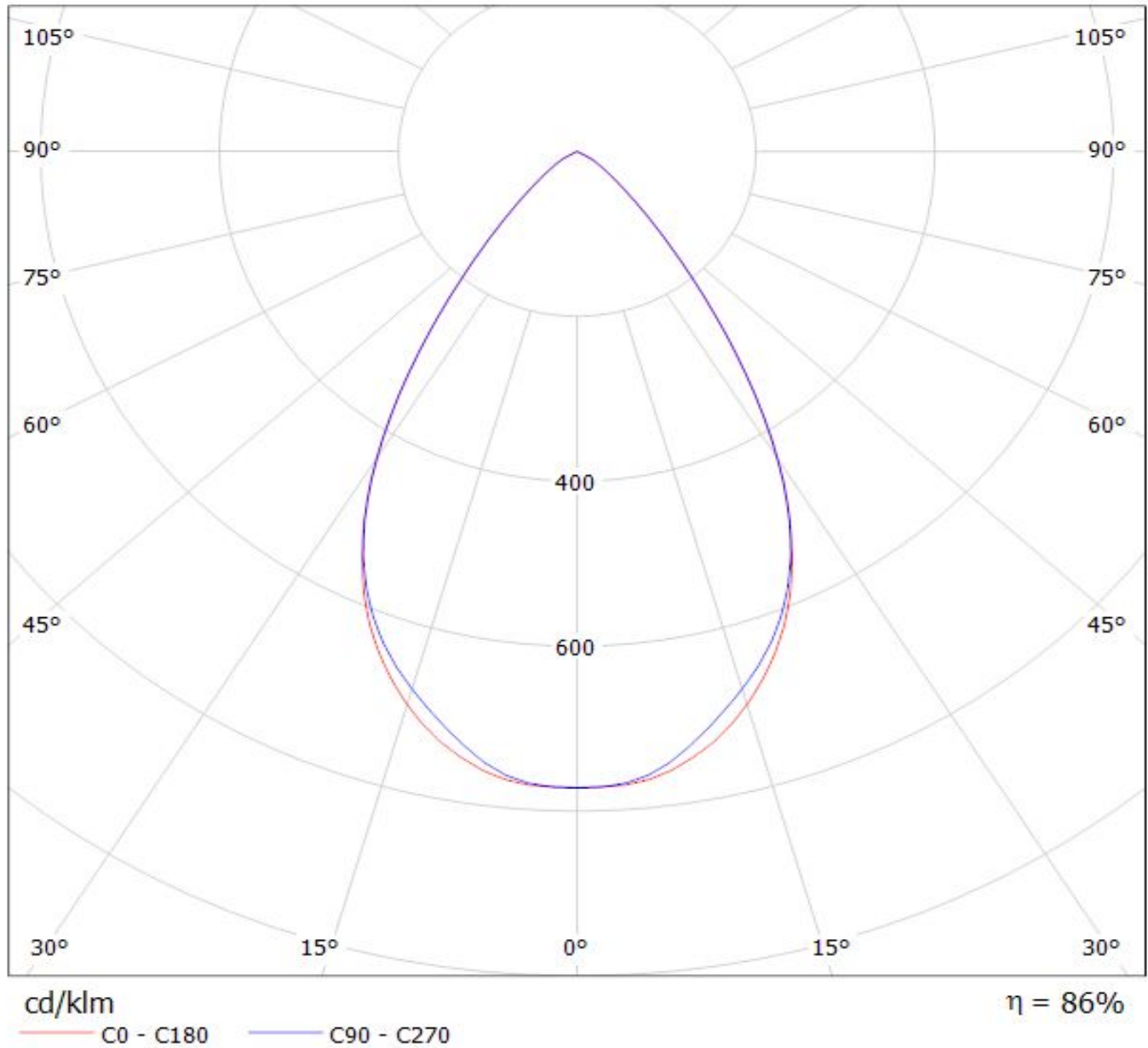


Luminaire: LEDiL Oy CA11766_LAURA-WW_(XP-G2

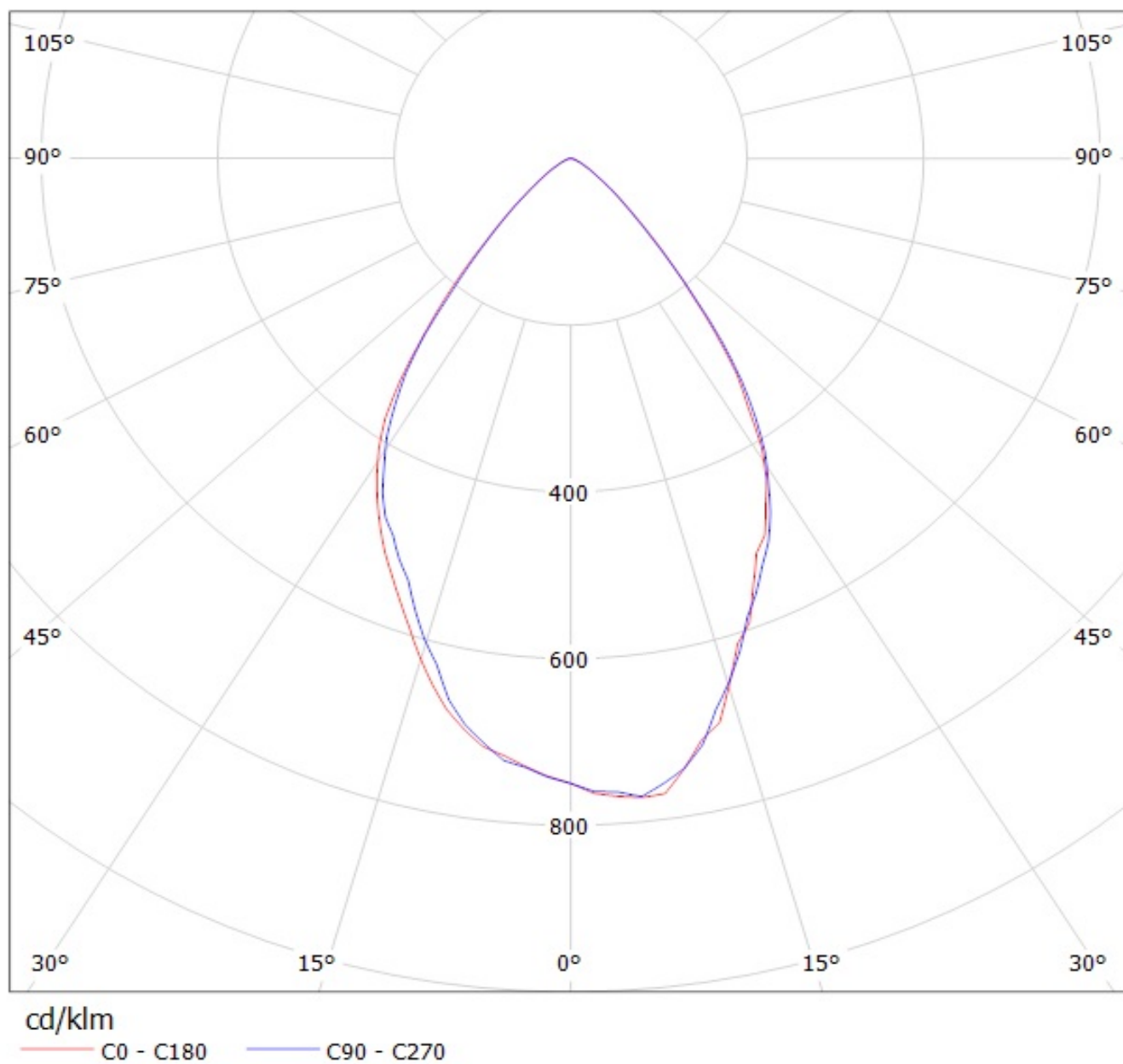
Lamps: 1 x Cree XP-G2 XPGBWT-L1-0000-00FE34 102lm@250mA CCT:5000K



Luminaire: Ledil Oy CA11766_Laura-WW-XP-tape CA11766_Laura-WW-XP-tape
Lamps: 1 x Cree XP-E white



Luminaire: Ledil Oy CA11766_LAURA-WW_(3535_Ceramic_gen2) Efficiency=83%
Lamps: 1 x LG 3535 Ceramic gen2 (PKG5700K) 116lm @ 250mA CCT=6200K P=0.7 I=250mA



NOTE: The typical divergence will be changed by different color, chip size and chip position tolerance. The typical total divergence is the full angle measured where the luminous intensity is half of the peak value.

GENERAL INFORMATION

- Product series especially designed & optimized for series of LEDs.
- Special care taken to make light distribution as uniform as possible.
- Fastening to heat sink with a PU foam adhesive tape of automotive grade. Please find fastening details by clicking link: http://www.ledil.com/datasheets/DataSheet_TAPE.pdf

NOTE 1: We advise customer to ensure the suitability and sufficiency of the bond in the end product. For example, mechanical stress, vibration and holes on the surface of the circuit board weaken the strength of the tape.

NOTE 2: Assembly to the surface must be made straight, so the tape bonds constant and balanced with fastening surface. Slanted assembly might cause unbalanced bond to the surface. All surfaces where tape is applied must be clean, dry and free from grease and dirt.

If cleaning of PCB surfaces is needed, please follow strictly the cleaning instructions of your LED manufacturer - this is important as cleaning shall under no circumstances damage LEDs or other electronics components on the PCB.

Further note that optical components shall not be cleaned with any chemicals - only micro fiber cloth may be used to remove fingerprints or other traces from handling.