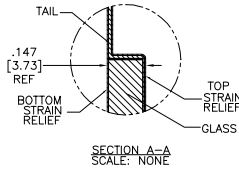


OGA DIAGONAL: 18.25 [463.63]  
 VA DIAGONAL: 17.54 [445.50]  
 PA DIAGONAL: 16.54 [420.12]

TOP LEVEL NUMBER	US NUMBER	TYPE	DIM "A" (TOTAL GLASS TO CONNECTOR)	A/G FINISH	PROD SPEC
17-8421-203	98-0003-2589-8	FFC	4.27" [108.46]	AG500	23655
17-8421-221	98-0003-2596-3	SER	4.27" [108.46]	AG500	23655
17-8421-204	98-0003-2590-6	FFC	6.00" [152.40]	AG500	23655
17-8421-223	98-0003-2597-1	SER	6.00" [152.40]	AG500	23655
17-8421-227	98-0003-2599-7	SER	8.00" [203.20]	AG500	23655
17-8421-205	98-0003-2591-4	FFC	8.00" [203.20]	AG500	23655
17-8421-206	98-0003-2190-5	NOV	SEE DWG	AG500	23655
17-8421-218	98-0003-2594-8	USB R	4.27" [108.46]	AG500	23655
17-8421-220	98-0003-3151-6	USB R	6.00" [152.40]	AG500	23655
17-8421-226	98-0003-3152-4	USB R	8.00" [203.20]	AG500	23655
17-8421-230	98-0003-2276-2	HID M	8.00" [203.20]	AG500	23655
N/A	98-0003-3537-6	HID D	8.00" [203.20]	AG500	23655
N/A	98-0003-3974-1	DUAL	8.00" [203.20]	AG500	23655
N/A	98-1100-0095-1	FFC	8.00" [203.20]	WC100	34523
N/A	98-1100-0096-9	USB R	8.00" [203.20]	WC100	34523

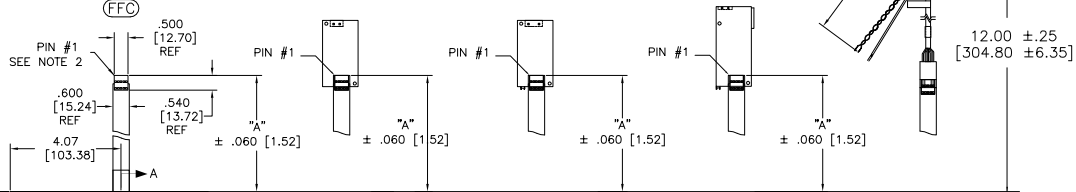
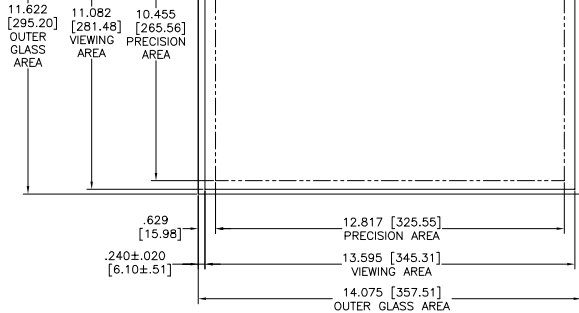


ESD CLAMSHELL CASE IS USED WITH ALL NOV, USB AND SER TERMINATIONS.



.147±.020 [3.73±.51]  
 TOTAL THICKNESS OF GLASS, CABLE AND STRAIN RELIEF

.125 [3.18] REF



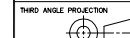
NOTES:

- WEIGHT OF GLASS IN GRAMS: 804±10%
- NICOMATIC HOUSING P/N: OLOS
- NICOMATIC RECEPTACLES (PINS) MATTE TIN PLATED P/N: 14106-12 HOUSING ORIENTED WITH LATCH DOWN

PINOUT	
1	LL
2	UL
3	SHLD
4	UR
5	LR

UNITS INCHES [MM]

TOLERANCES UNLESS OTHERWISE SPECIFIED  
 .X ±  
 .XX ±.03 [.76]  
 .XXX ±.015 [.38]  
 ANGLES ±1°



DO NOT SCALE DRAWING

SCALE 1 = 1



© COPYRIGHT 2004  
 THIS DOCUMENT IS COPYRIGHTED PROPERTY OF THE 3M COMPANY AND MAY NOT BE REPRODUCED WITHOUT 3M WRITTEN PERMISSION OR USED OR DISCLOSED FOR OTHER THAN 3M AUTHORIZED PURPOSES.

DRAWN K CROWLEY 08/05

P	REVISED PER CO 036265	4/13	SEB
N	REVISED PER CO 036100	2/13	SEB
REV	CHANGE NOTICE	DATE	DRW

TITLE  
 MARKETING DRAWING  
 SCT32NN 17.54"

CAD FORMAT AUTOCAD SHEET 1 OF 1

SIZE C DOCUMENT NO. TSD-28165 REV P

# Mouser Electronics

Authorized Distributor

Click to View Pricing, Inventory, Delivery & Lifecycle Information:

3M:

[98110000951](#) [98110000969](#)