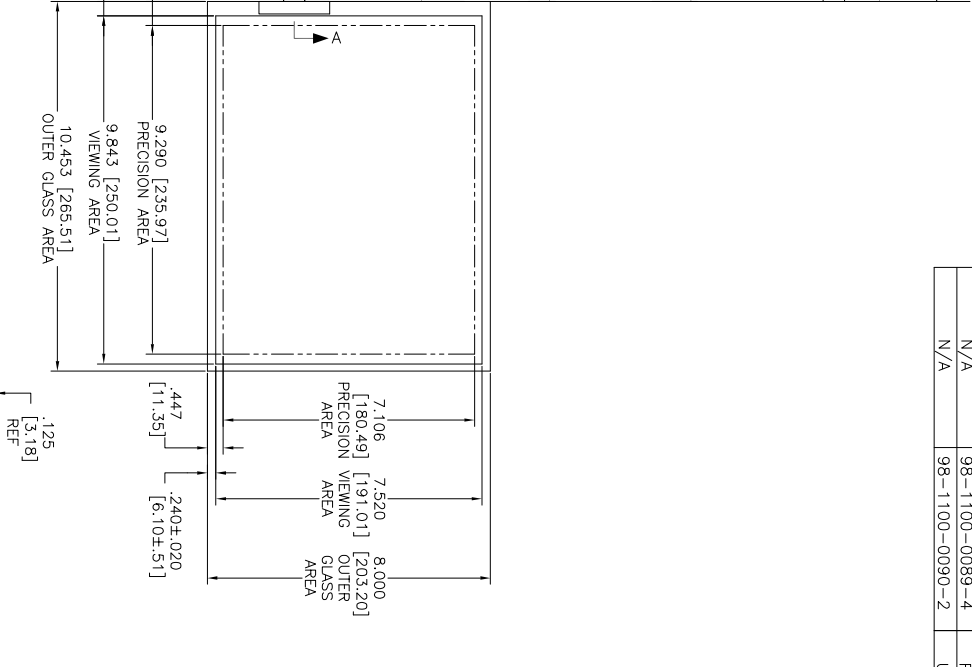
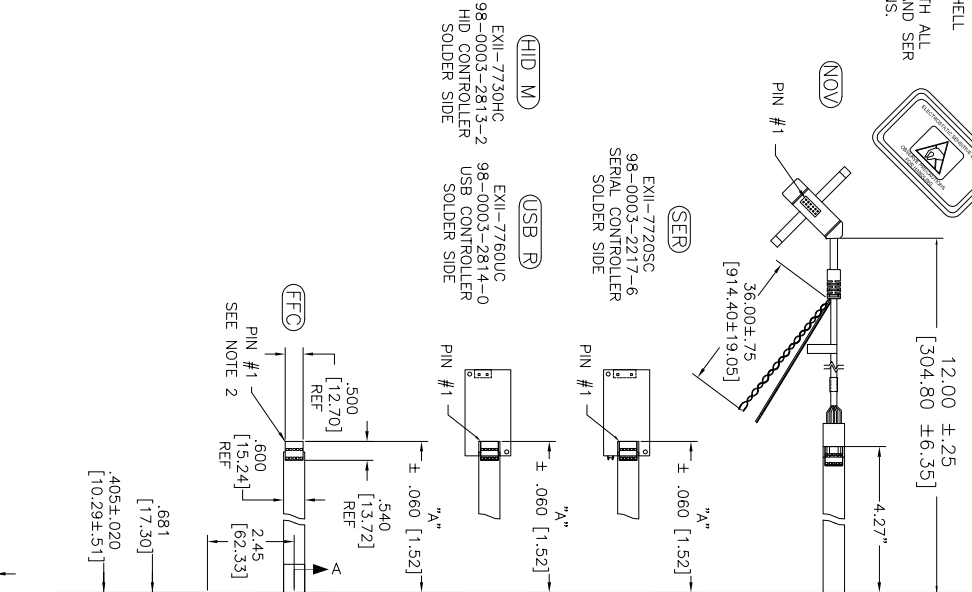


OGA DIAGONAL: 13.16 [334.34]  
 VA DIAGONAL: 12.39 [314.63]  
 PA DIAGONAL: 11.70 [297.08]

ESD CLAMSHELL  
 CASE IS USED WITH ALL  
 NOV, USB AND SER  
 TERMINATIONS.



TOP LEVEL NUMBER	US NUMBER	TYPE	DM "A" (TOTAL GLASS TO CONNECTOR)	A/G FINISH	PROD SPEC
17-8581-203	98-0003-2633-4	FFC	4.27" [108.46]	AG500	23655
17-8581-205	98-0003-2634-2	FFC	8.00" [203.20]	AG500	23655
17-8581-206	98-0003-2635-9	NOV	SEE DWG	AG500	23655
17-8581-221	98-0003-2637-5	SER	4.27" [108.46]	AG500	23655
17-8581-222	98-0003-2639-1	SER	8.00" [203.20]	AG500	23655
17-8581-218	98-0003-3272-0	USB R	4.27" [108.46]	AG500	23655
17-8581-230	98-0003-2994-0	HID M	8.00" [203.20]	AG500	23655
N/A	98-1100-0089-4	FFC	8.00" [203.20]	WC100	34523
N/A	98-1100-0090-2	USB R	8.00" [203.20]	WC100	34523

PINOUT
1 LR
2 LL
3 SHLD
4 UL
5 UR

- NOTES:
1. WEIGHT OF GLASS IN GRAMS: 4.11±10%
  2. NICOMATIC HOUSING P/N: OLOS
  3. NICOMATIC RECEPTACLES (PINS) MATTE TIN PLATED P/N: 14106-12
  4. HOUSING ORIENTED WITH LATCH DOWN

UNITS: INCHES [MM]  
 TOLERANCES: UNLESS OTHERWISE SPECIFIED

X ±.03 [0.76]  
 .XX ±.015 [0.38]  
 ANGLES ±1°

THIRD ANGLE PROJECTION

DO NOT SCALE DRAWING  
 SCALE: 1 = 1

DRAWN: K CHROWLEY  
 DATE: 9/05

©Copyright 2004 3M TOUCH SYSTEMS  
 3M TOUCH SYSTEMS  
 USA  
 THIS DOCUMENT IS THE PROPRIETARY PROPERTY OF THE  
 COMPANY AND IS NOT TO BE REPRODUCED, COPIED, OR  
 TRANSMITTED IN ANY MANNER WITHOUT THE WRITTEN PERMISSION OF THE  
 COMPANY. PERMISSION IS GRANTED FOR THIS DOCUMENT TO BE USED FOR  
 REPRODUCTION OF THE PRODUCT FOR OTHER THAN 3M AUTHORIZED  
 REPRODUCTION.

REV	DATE	BY	CHKD	APP'D
L	4/13	SB		
K	2/13	SB		

MARKETING DRAWING  
 SCT32NN 12.39"

DO (FORM) AUTOCAD SHEET 1 OF 1  
 TSD-28159

# Mouser Electronics

Authorized Distributor

Click to View Pricing, Inventory, Delivery & Lifecycle Information:

[3M:](#)

[98110000902](#)