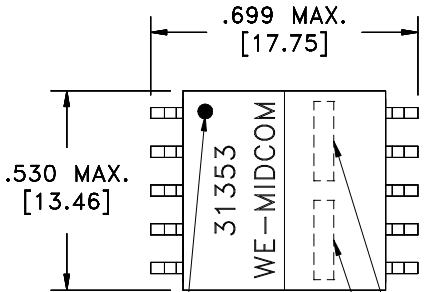
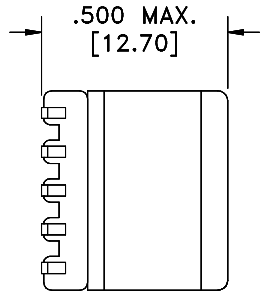
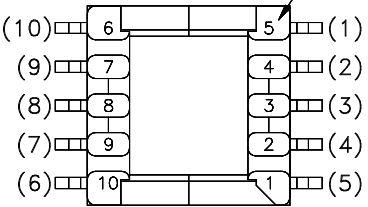


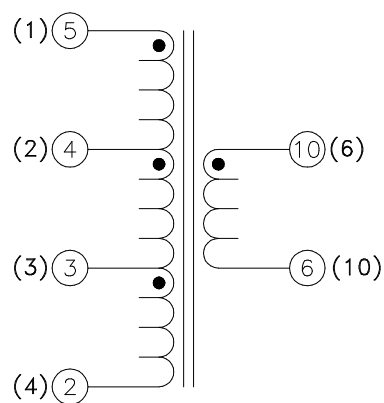
SOLDER SUFFIX	CUSTOMER TERMINAL	RoHS	LEAD(Pb)-FREE
	Sn63%, Pb37%	No	No
LF1	Sn96%, Ag4%	Yes	Yes

TERM. NO.'s FOR REF. ONLY  
CUSTOMER TERM. NO.'s IN ( )

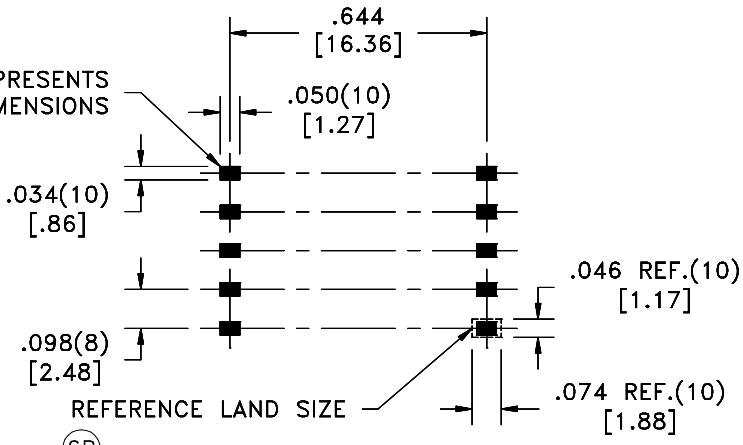


DOT LOCATES TERM. #5  
CUSTOMER TERM. (1)  
LOT CODE & DATE CODE  
SOLDER SUFFIX

(6D)(6E)



AREA REPRESENTS  
TERMINAL PAD DIMENSIONS



(6B) CUSTOMER TO DETERMINE LAND LAYOUT


**ELECTRICAL SPECIFICATIONS @ 25°C unless otherwise noted:**

- D.C. RESISTANCE (@20°C): 5-2, 0.12 ohms max.  
10-6, 0.72 ohms max.
- DIELECTRIC RATING: 500VAC, 1 minute tested by applying 625VAC for 1 second between 5-10.
- INDUCTANCE: 11.30uH ±10%, 100kHz, 100mVAC, 5-4, Ls.
- URNS RATIO: (10-6):(5-4) = 5:1, ±1%.  
(10-6):(4-3) = 5:1, ±1%.  
(10-6):(3-2) = 5:1, ±1%.

(6K) OPERATING TEMPERATURE RANGE: -40°C to +125°C including temp rise.

Midcom p/n 31353R-LF1 is eiSos p/n 750031353.

(6E) Designed to meet the specifications of Silicon Laboratories p/n: Si3210 Rev. B.  
DETAILS SUBJECT TO CHANGE

Unless otherwise specified: Tolerances: Angles: ±1° Fractions: ±1/64 Decimals: ±.005[.13]	DRAWING TITLE <h2 style="text-align: center;">TRANSFORMER</h2>	 www.midcom-inc.com	PART NO. (6E) REV. 6K <b>31353R/-LF1</b> 1/09	PART # 31353R/-LF1
	eiSos p/n: 750031353 SEE REVISION SHEET FOR REVISION LEVEL			

This drawing is dual dimensioned.  
Dimensions in brackets are in millimeters.