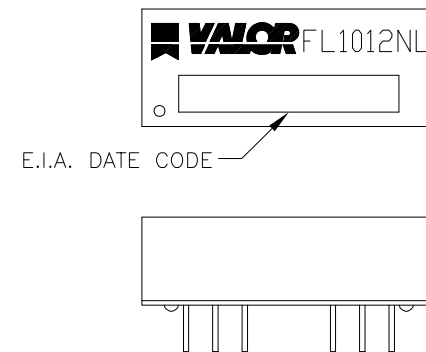


NOTES:

1. HEADER: THERMOPLASTIC WITH FLAMMABILITY RATING UL 94V-0 OR BETTER.
2. STORAGE TEMPERATURE: -20°C TO +125°C
3. COMPLIANCE TO J-STD:
 - A. J-STD-002: SOLDERABILITY AT 245°C REFLOW PROFILE
 - B. J-STD-020: LEVEL 1, NO MOISTURE SENSITIVE
 - C. J-STD-075: R7, 245°C MAXIMUM THROUGH REFLOW SOLDER
4. TO ORDER TAPE & REEL PACKAGING ADD A "T" SUFFIX TO THE PART NUMBER(i.e FL1012NL BECOMES FL1012NLT).



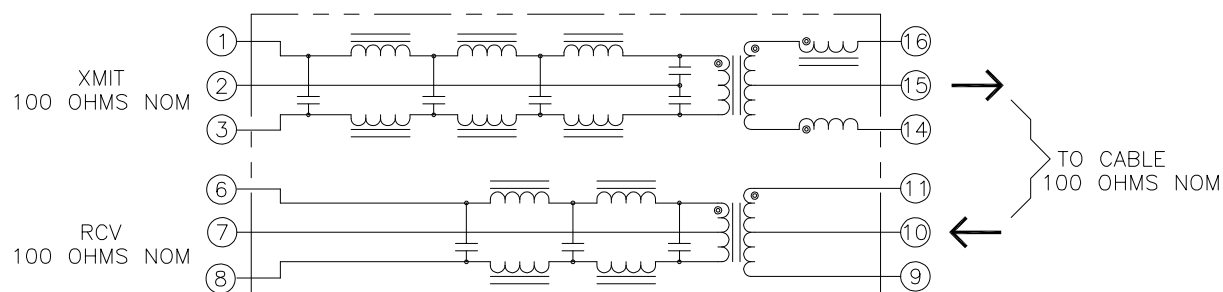
FINAL OUTLINE

© Copyright, 2016. Pulse Electronics Corp. All rights reserved. Pulse confidential & proprietary. (10/08/16)

PRODUCT DESCRIPTION	TLA DRAWING	PS DRAWING	SHEET	PART NO.	DATASHEET REV.
MDL,SIN,10F,1:1,THT,TU	FL1012NL-14	PS-XXXX	1 OF 3	FL1012NL	A

ELECTRICAL CHARACTERISTICS AT +25°C UNLESS OTHER SPECIFIED

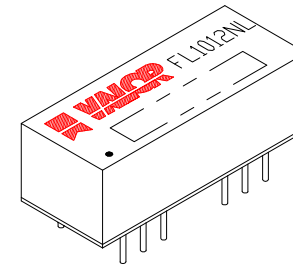
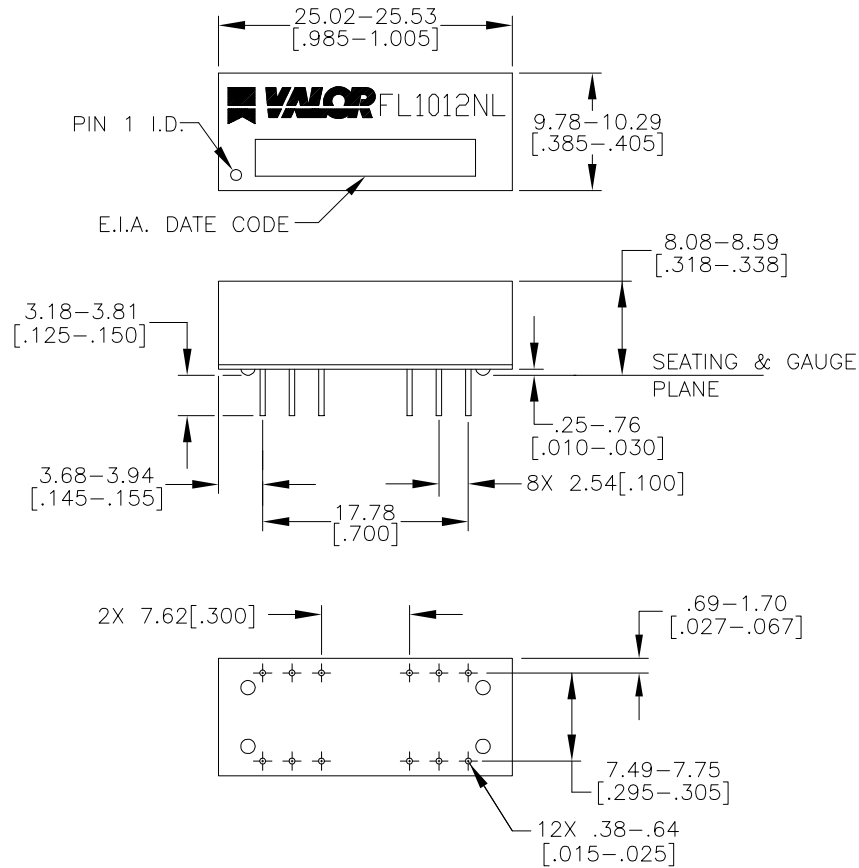
PARAMETER	SPECIFICATIONS							
OPERATING TEMP	0°C TO +70°C							
POLARITY	PER SCHEMATIC							
URNS RATIO	1 : 1 ± 2%							
INSERTION LOSS (1-10MHz)	TX				RX			
	-1.0 dB MAXIMUM				-0.8 dB MAXIMUM			
ATTENUATION	TX				RX			
	20MHz	25MHz	30MHz	40MHz	20MHz	25MHz	30MHz	40MHz
	-7dB MIN	-19dB MIN	-30dB MIN	-32dB MIN	-6dB MIN	-14dB MIN	-20dB MIN	-31dB MIN
DCR	TX				RX			
	.5 OHMS MAX (14-15)				.5 OHMS MAX (9-10) 1.0 OHMS MAX (6-7)			
COMMON MODE REJECTION RATIO	30-100MHz							
	-30 dB MIN							
RETURN LOSS (Z OUT = 100 OHM ±15%)	5-10MHz							
	-17 dB MIN							
CROSS TALK	-30dB MIN (1-10MHz)							
INPUT - OUTPUT ISOLATION	TX				RX			
	1500VRMS FOR 1 MINUTE (PINS 1, 2 AND 3 TO 14, 15 AND 16)				1500VRMS FOR 1 MINUTE (PINS 6, 7 AND 8 TO 9, 10 AND 11)			



SCHEMATIC

© Copyright, 2016. Pulse Electronics Corp. All rights reserved. Pulse confidential & proprietary. (10/08/16)

PRODUCT DESCRIPTION	TLA DRAWING	PS DRAWING	SHEET	PART NO.	DATASHEET REV.
MDL,SIN,10F,1:1,THT,TU	FL1012NL-14	PS-XXXX	2 OF 3	FL1012NL	A



DIMENSIONS ARE IN MILLIMETERS [INCHES] WITH THE FOLLOWING TOLERANCES: [INCHES] ARE FOR REFERENCE ONLY.
X.XX= ±0.25 [±.010]

© Copyright, 2016. Pulse Electronics Corp. All rights reserved. Pulse confidential & proprietary. (10/08/16)

PRODUCT DESCRIPTION	TLA DRAWING	PS DRAWING	SHEET	PART NO.	DATASHEET REV.
MDL,SIN,10F,1:1,THT,TU	FL1012NL-14	PS-XXXX	3 OF 3	FL1012NL	A

Mouser Electronics

Authorized Distributor

Click to View Pricing, Inventory, Delivery & Lifecycle Information:

Pulse:

[FL1012NL](#)