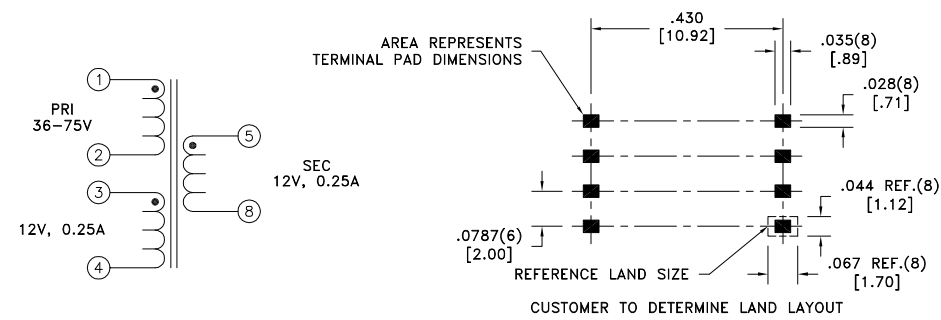
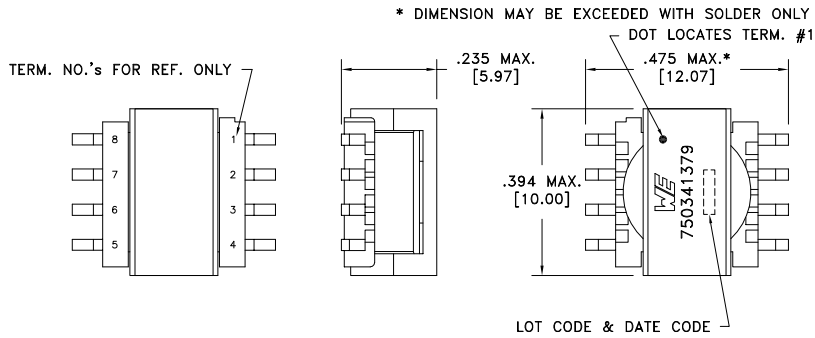


|                   |      |               |
|-------------------|------|---------------|
| CUSTOMER TERMINAL | RoHS | LEAD(Pb)-FREE |
| Sn96%, Ag4%       | Yes  | Yes           |

more than you expect



ELECTRICAL SPECIFICATIONS @ 25°C unless otherwise noted:

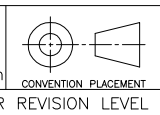
| PARAMETER          | TEST CONDITIONS                      | VALUE             |
|--------------------|--------------------------------------|-------------------|
| D.C. RESISTANCE    | 1-2 @20°C                            | 0.29 ohms max.    |
| D.C. RESISTANCE    | 3-4 @20°C                            | 0.14 ohms max.    |
| D.C. RESISTANCE    | 5-8 @20°C                            | 0.22 ohms max.    |
| INDUCTANCE         | 1-2 100kHz, 1.0VAC, Ls               | 65uH ±15%         |
| LEAKAGE INDUCTANCE | 1-2 tie(3+4+5+8), 100kHz, 1.0VAC, Ls | 1.5uH max.        |
| DIELECTRIC         | 1-5 tie(2+3), 1250VDC, 1 second      | 1000VDC, 1 minute |
| TURNS RATIO        | (1-2):(3-4)                          | 2.75:1, ±2%       |
| TURNS RATIO        | (1-2):(5-8)                          | 2.75:1, ±2%       |

GENERAL SPECIFICATIONS:

OPERATING TEMPERATURE RANGE: -40°C to +125°C including temp rise.

Wire insulation & RoHS status not affected by wire color.  
Wire insulation color may vary depending on availability.

| REV. | DATE | Packaging Specifications       |
|------|------|--------------------------------|
|      |      | Method: <b>Tape &amp; Reel</b> |
|      |      | PKG-0193                       |
|      |      | www.we-online.com/midcom       |
| 6B   | 9/12 |                                |
| 6A   | 7/12 | SEE REVISION SHEET FOR         |



Tolerances unless otherwise specified:  
Angles: ±1°  
Fractions: ±1/64  
Decimals: ±.005 [.13]  
Footprint: ±.005 [.13]

This drawing is dual dimensioned. Dimensions in brackets are in millimeters.

DRAWING TITLE  
**TRANSFORMER**

eiSos p/n: 750341379



PART NO.  
**750341379**

SPECIFICATION SHEET 1 OF 1