



# EDM Add-ons and Accessories

## TDHJ070NA-4RES-KIT



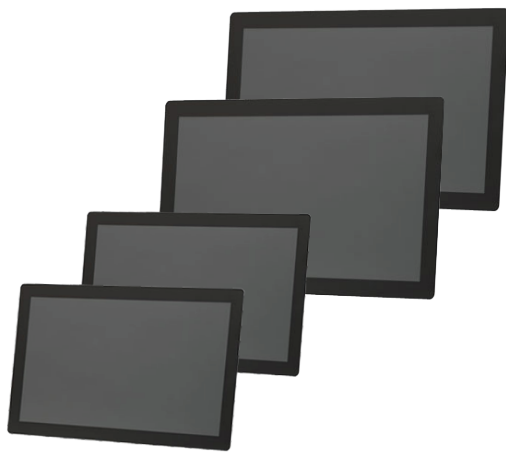
7 inch touchscreen startkit for Fairy and Wizard development boards.

Pack content:

- LVDS-cable
- 4-wire touch cable
- 7" LCD display CMI HJ070NA-4RES
  - 1024x600 resolution
  - 250 nits brightness
  - 4 wire resistive touchscreen
  - dimensions 165.75x 105.39x 3.65 mm
- Adaptor board (EDM-LVDS-HJ070NA-4w-Touch)
  - translate LVDS and touchsignals from EDM carrier boards to CMI HJ070NA-4RES



## EDM Display and Touch Solutions



A broad selection of display starterkit solutions is available for EDM development kits with the following characteristics

- LCD displays (7~32 inch)
- Resistive or Projective capacitive touch screens
- High Brightness options available
- Wide temperature range options
- Upto 5 years longevity
- Software drivers available for Linux and Android



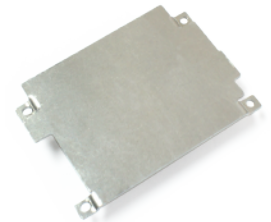
For an overview of available touchscreen solutions and displays. Visit the TechNexion homepage or ask your distributor for assistance.



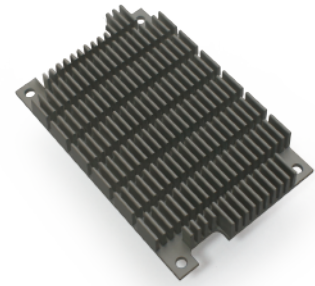
## Thermal Solutions

A selection of heatspreaders, passive and active heatsinks for heat dissipation is available to meet specific application requirements in demanding and high performance applications.

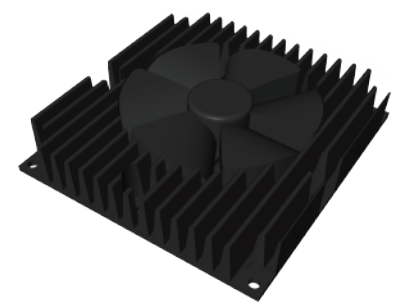
### Heatspreaders



### Passive Heatsinks



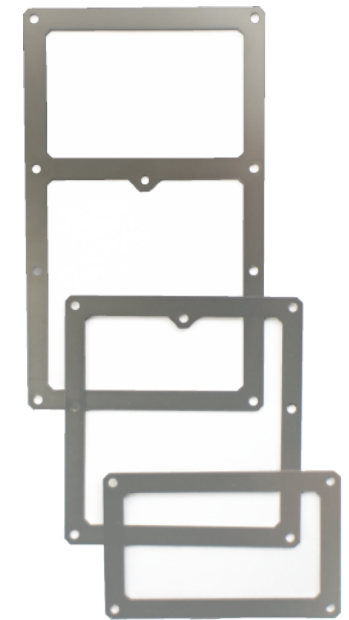
### Active Heatsinks



For thermal solutions and mounting options for EDM compatible products. Visit the TechNexion homepage or ask your distributor for assistance.



## EDM Mount Frames



- EDM-C-Bracket      EDM Compact carrier board mount bracket
- EDM-S-Bracket      EDM Standard carrier board mount bracket
- EDM-X-Bracket      EDM Extended carrier board mount bracket

# Mouser Electronics

Authorized Distributor

Click to View Pricing, Inventory, Delivery & Lifecycle Information:

[TechNexion:](#)

[EDMHSCP12200501](#) [TDHJ070NA4RESKIT](#)

Other:

[TDHJ070NA-4RES-KIT](#) [EDM-HS-CP12-20-05-01](#)