

# Electronic housing - ME MAX 35 U-U1 KMGY



2713667

<https://www.phoenixcontact.com/us/products/2713667>

Please be informed that the data shown in this PDF document is generated from our Online Catalog. Please find the complete data in the user documentation. Our General Terms of Use for Downloads are valid.



DIN rail housing, Complete housing with metal foot catch, tall design, with vents, width: 35.2 mm, height: 99 mm, depth: 113.65 mm, color: light grey (7035), cross connection: DIN rail connector (optional), number of positions cross connector: 5

## Your advantages

- Easy installation
- Available in overall widths from 6.2 mm ... 90 mm, modular extension possible
- Variety of connection technology
- Can be mounted on the DIN rail
- With DIN-rail-mountable bus connector and power connector system as an option
- Transparent front cover can be swiveled

## Commercial Data

|                                      |                                |
|--------------------------------------|--------------------------------|
| Item number                          | 2713667                        |
| Packing unit                         | 1 pc                           |
| Minimum order quantity               | 10 pc                          |
| Note                                 | Made to Order (non-returnable) |
| Sales Key                            | A13                            |
| Product Key                          | ACHABA                         |
| Catalog Page                         | Page 687 (C-1-2013)            |
| GTIN                                 | 4017918936167                  |
| Weight per Piece (including packing) | 79.03 g                        |
| Weight per Piece (excluding packing) | 63.178 g                       |
| Customs tariff number                | 85389099                       |
| Country of origin                    | DE                             |

## Technical Data

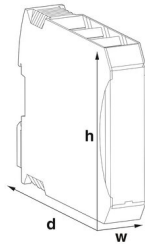
### Notes

|                       |   |
|-----------------------|---|
| Assembly instruction: | Refer to the data sheet for the range in the download area.           |
| Recommendation        | Material of contact pads for bus connector, galvanic gold (hard gold) |

### Product properties

|                              |   |
|------------------------------|---|
| Product type                 | Complete housing                                    |
| Number of positions          | 4   |
|                              | 8   |
| Max. number of positions     | 8 (pitch: 3.5 mm)                                   |
|                              | 6 (pitch: 5 mm)                                     |
|                              | 4 (pitch: 7.25 mm/7.5 mm)                           |
| Number of rows               | 1   |
| Type                         | Complete housing with metal foot catch, tall design |
| Housing type                 | DIN rail housing                                    |
| Ventilation openings present | yes   |
| Housing series               | ME-MAX  |
|                              | 0 (Top) / 1 (Bottom)                                |

### Dimensions

|                                 |   |
|---------------------------------|---|
| Dimensional drawing             |  |
| Width                           | 35.2 mm   |
| Height                          | 99 mm   |
| Depth                           | 113.65 mm   |
| Depth from top edge of DIN rail | 107 mm  |

### PCB design

|               |                   |
|---------------|-------------------|
| PCB thickness | 1.4 mm ... 1.8 mm |
|---------------|-------------------|

### Material specifications

|  |                   |
|--|-------------------|
| Color                                  | light grey (7035) |
| Flammability rating according to UL 94 | V0                |
| CTI according to IEC 60112             | 600               |
| Surface characteristics                | untreated         |
| Housing material                       | Polyamide         |

## Environmental and real-life conditions

### Power dissipation single housing for 20 °C

|                     |          |
|---------------------|----------|
| Ambient temperature | 20 °C    |
| Reduction factor    | 1        |
| Mounting position   | vertical |
| Power dissipation   | 7.9 W    |

### Power dissipation single housing for 30 °C

|                     |          |
|---------------------|----------|
| Ambient temperature | 30 °C    |
| Reduction factor    | 0.91     |
| Mounting position   | vertical |
| Power dissipation   | 7.2 W    |

### Power dissipation single housing for 40 °C

|                     |          |
|---------------------|----------|
| Ambient temperature | 40 °C    |
| Reduction factor    | 0.81     |
| Mounting position   | vertical |
| Power dissipation   | 6.4 W    |

### Power dissipation single housing for 50 °C

|                     |          |
|---------------------|----------|
| Ambient temperature | 50 °C    |
| Reduction factor    | 0.7      |
| Mounting position   | vertical |
| Power dissipation   | 5.5 W    |

### Power dissipation single housing for 60 °C

|                     |          |
|---------------------|----------|
| Ambient temperature | 60 °C    |
| Reduction factor    | 0.57     |
| Mounting position   | vertical |
| Power dissipation   | 4.5 W    |

### Power dissipation single housing for 70 °C

|                     |          |
|---------------------|----------|
| Ambient temperature | 70 °C    |
| Reduction factor    | 0.49     |
| Mounting position   | vertical |
| Power dissipation   | 3.7 W    |

### Vibration test

|                        |                        |
|------------------------|------------------------|
| Specification          | IEC 60068-2-6:2007-12  |
| Frequency              | 10 - 150 - 10 Hz       |
| Sweep speed            | 1 octave/min           |
| Amplitude              | 0.15 mm (10 - 58.1 Hz) |
| Acceleration           | 2g (58.1 - 150 Hz)     |
| Test duration per axis | 2.5 h                  |
| Test directions        | X-, Y- and Z-axis      |

2713667

<https://www.phoenixcontact.com/us/products/2713667>

## Mechanical strength / tumbling barrel

|                |                     |
|----------------|---------------------|
| Specification  | IEC 60998-1:2002-12 |
| Height of fall | 50 cm               |
| Frequency      | 10                  |

## Shocks

|                                |                                   |
|--------------------------------|-----------------------------------|
| Specification                  | IEC 60068-2-27:2008-02            |
| Pulse shape                    | Half-sine                         |
| Acceleration                   | 15g                               |
| Shock duration                 | 11 ms                             |
| Number of shocks per direction | 3                                 |
| Test directions                | X-, Y- and Z-axis (pos. and neg.) |

## Degree of protection (IP code)

|               |   |
|---------------|---|
| Specification | IEC 60529:1989-11 + AMD 1:1999-11 + AMD 2:2013-08 |
|---------------|---|

## Ambient conditions

|   |  |
|---|--|
| Max. IP code to attain                  | IP20   |
| Ambient temperature (operation)         | -40 °C ... 105 °C (depending on power dissipation) |
| Ambient temperature (storage/transport) | -40 °C ... 55 °C                                   |
| Ambient temperature (assembly)          | -5 °C ... 100 °C                                   |
| Relative humidity (storage/transport)   | 80 %   |

## PCB data

|                       |                   |
|-----------------------|-------------------|
| Number of PCB holders | 2                 |
| Type of PCB mount     | Latching          |
| Thickness of the PCB  | 1.4 mm ... 1.8 mm |

## Mounting

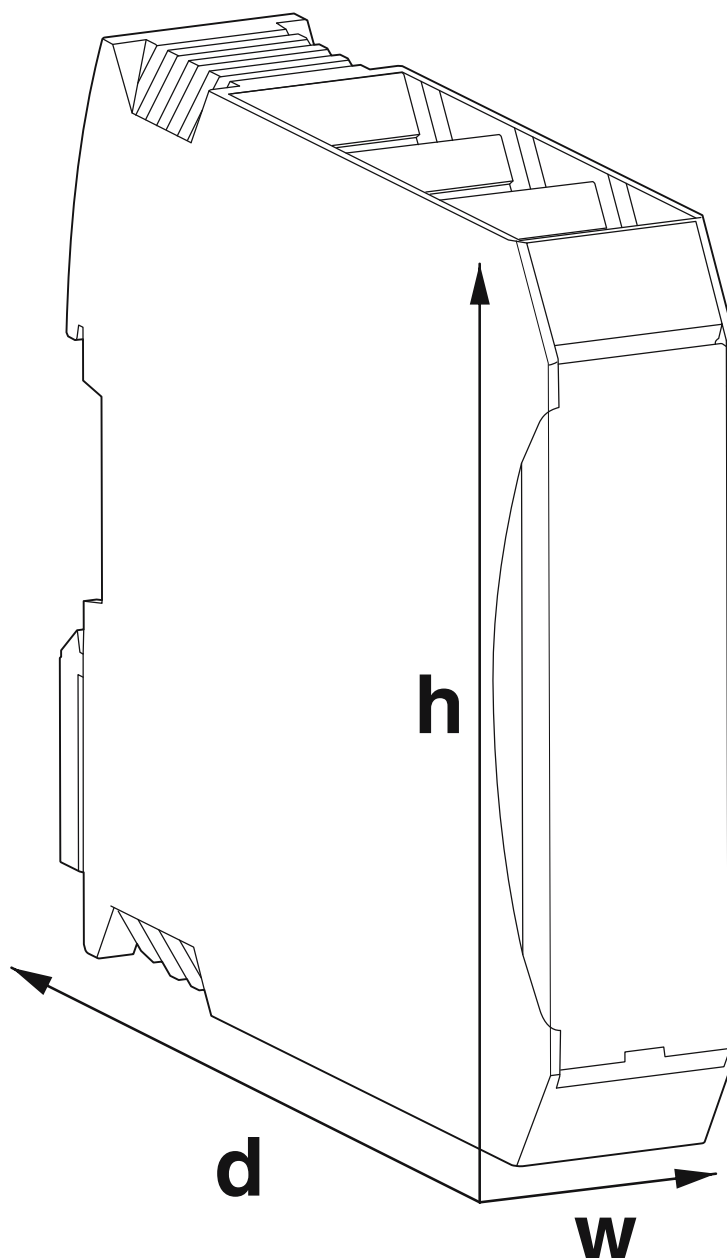
|                   |                                |
|-------------------|--------------------------------|
| Mounting type     | DIN rail mounting              |
| Mounting position | Vertical (horizontal DIN rail) |

## Packaging specifications

|                      |                     |
|----------------------|---------------------|
| Type of packaging    | packed in cardboard |
| Outer packaging type | Carton              |

## Drawings

Dimensional drawing



Schematic figure for illustrating the item dimensions. The figure is not of the desired product. For further details, refer to the product drawings in the "Downloads" tab.

# Electronic housing - ME MAX 35 U-U1 KMGY

2713667

<https://www.phoenixcontact.com/us/products/2713667>



## Approvals



**UL Recognized**

Approval ID: FILE E 240868

# Electronic housing - ME MAX 35 U-U1 KMGY



2713667

<https://www.phoenixcontact.com/us/products/2713667>

## Classifications

### ECLASS

|               |          |
|---------------|----------|
| ECLASS-9.0    | 27182702 |
| ECLASS-10.0.1 | 27182702 |
| ECLASS-11.0   | 27182702 |

### ETIM

|          |          |
|----------|----------|
| ETIM 8.0 | EC001031 |
|----------|----------|

### UNSPSC

|             |          |
|-------------|----------|
| UNSPSC 21.0 | 31261500 |
|-------------|----------|

Environmental Product Compliance

|            |   |
|------------|---|
| China RoHS | Environmentally friendly use period: unlimited = EFUP-e |
|            | No hazardous substances above threshold values          |



2713667

<https://www.phoenixcontact.com/us/products/2713667>

## Mandatory Accessories

### PCB header

PCB header - MCO 1,5/ 4-G1L-3,5 KMGY - 2278364

<https://www.phoenixcontact.com/us/products/2278364>



PCB headers, nominal cross section: 1.5 mm<sup>2</sup>, color: light grey, nominal current: 8 A, rated voltage (III/2): 160 V, contact surface: Tin, type of contact: Male connector, number of potentials: 4, number of rows: 1, number of positions: 4, number of connections: 4, product range: MCO 1,5/...-G1L, pitch: 3.5 mm, mounting: Wave soldering, pin layout: Linear pinning, solder pin [P]: 2.75 mm, locking: without, type of packaging: packed in cardboard, Product with pin output on left side

### PCB header

PCB header - MCO 1,5/ 4-G1R-3,5 KMGY - 2278377

<https://www.phoenixcontact.com/us/products/2278377>



PCB headers, nominal cross section: 1.5 mm<sup>2</sup>, color: light grey, nominal current: 8 A, rated voltage (III/2): 160 V, contact surface: Tin, type of contact: Male connector, number of potentials: 4, number of rows: 1, number of positions: 4, number of connections: 4, product range: MCO 1,5/...-G1R, pitch: 3.5 mm, mounting: Wave soldering, pin layout: Linear pinning, solder pin [P]: 2.75 mm, locking: without, Product with pin output on right side

2713667

<https://www.phoenixcontact.com/us/products/2713667>

## PCB connector

PCB connector - MC 1,5/ 4-ST-3,5 GY7035 - 1769074

<https://www.phoenixcontact.com/us/products/1769074>



PCB connector, nominal cross section: 1.5 mm<sup>2</sup>, color: light grey, nominal current: 8 A, rated voltage (III/2): 160 V, contact surface: Tin, type of contact: Female connector, number of potentials: 4, number of rows: 1, number of positions: 4, number of connections: 4, product range: MC 1,5/...-ST, pitch: 3.5 mm, connection method: Screw connection with tension sleeve, screw head form: L Slotted, conductor/PCB connection direction: 0 °, number of solder pins per potential: 1, plug-in system: COMBICON MC 1,5, locking: without, mounting: without, type of packaging: packed in cardboard

---

## Printed-circuit board connector

Printed-circuit board connector - FMC 1,5/ 4-ST-3,5 GY7035 - 1773578

<https://www.phoenixcontact.com/us/products/1773578>



PCB connector, nominal cross section: 1.5 mm<sup>2</sup>, color: light grey, nominal current: 8 A, rated voltage (III/2): 160 V, contact surface: Tin, type of contact: Female connector, number of potentials: 4, number of rows: 1, number of positions: 4, number of connections: 4, product range: FMC 1,5/...-ST, pitch: 3.5 mm, connection method: Push-in spring connection, conductor/PCB connection direction: 0 °, plug-in system: COMBICON MC 1,5, locking: without, mounting: without, type of packaging: packed in cardboard

2713667

<https://www.phoenixcontact.com/us/products/2713667>

## PCB connector

PCB connector - FK-MCP 1,5/ 4-ST-3,5 GY7035 - 1773594

<https://www.phoenixcontact.com/us/products/1773594>



PCB connector, nominal cross section: 1.5 mm<sup>2</sup>, color: light grey, nominal current: 8 A, rated voltage (III/2): 160 V, contact surface: Tin, type of contact: Female connector, number of potentials: 4, number of rows: 1, number of positions: 4, number of connections: 4, product range: FK-MCP 1,5/...-ST, pitch: 3.5 mm, connection method: Push-in spring connection, conductor/PCB connection direction: 0 °, number of solder pins per potential: 1, plug-in system: COMBICON MC 1,5, locking: without, mounting: without, type of packaging: packed in cardboard

---

## PCB header

PCB header - MSTBO 2,5/ 3-G1L KMGY - 2853750

<https://www.phoenixcontact.com/us/products/2853750>



PCB headers, nominal cross section: 2.5 mm<sup>2</sup>, color: light grey, nominal current: 12 A, rated voltage (III/2): 320 V, contact surface: Tin, type of contact: Male connector, number of potentials: 3, number of rows: 1, number of positions: 3, number of connections: 3, product range: MSTBO 2,5/...-G1L, pitch: 5 mm, mounting: Wave soldering, pin layout: Linear pinning, solder pin [P]: 3.5 mm, number of solder pins per potential: 1, locking: without, type of packaging: packed in cardboard, Product with pin output on left side

2713667

<https://www.phoenixcontact.com/us/products/2713667>

## PCB header

PCB header - MSTBO 2,5/ 3-G1R KMGY - 2853763

<https://www.phoenixcontact.com/us/products/2853763>



PCB headers, nominal cross section: 2.5 mm<sup>2</sup>, color: light grey, nominal current: 12 A, rated voltage (III/2): 320 V, contact surface: Tin, type of contact: Male connector, number of potentials: 3, number of rows: 1, number of positions: 3, number of connections: 3, product range: MSTBO 2,5/...-G1R, pitch: 5 mm, mounting: Wave soldering, pin layout: Linear pinning, solder pin [P]: 3.5 mm, number of solder pins per potential: 1, locking: without, type of packaging: packed in cardboard, Product with pin output on right side

## PCB header

PCB header - MSTBO 2,5/ 3 G1L THRR44 BK - 2915216

<https://www.phoenixcontact.com/us/products/2915216>



PCB headers, nominal cross section: 2.5 mm<sup>2</sup>, color: black, nominal current: 16 A, rated voltage (III/2): 320 V, contact surface: Tin, type of contact: Male connector, number of rows: 1, number of positions: 3, product range: MSTBO 2,5/...-G1L-THR, pitch: 5 mm, mounting: THR soldering, pin layout: Linear pinning, solder pin [P]: 2.5 mm, number of solder pins per potential: 1, plug-in system: COMBICON MSTB 2,5, locking: without, type of packaging: 44 mm wide tape, Article with lateral pin exit

2713667

<https://www.phoenixcontact.com/us/products/2713667>

## PCB header

PCB header - MSTBO 2,5/ 3 G1R THRR44 BK - 2915229

<https://www.phoenixcontact.com/us/products/2915229>



PCB headers, nominal cross section: 2.5 mm<sup>2</sup>, color: black, nominal current: 16 A, rated voltage (III/2): 320 V, contact surface: Tin, type of contact: Male connector, number of rows: 1, number of positions: 3, product range: MSTBO 2,5/-G1R-THR, pitch: 5 mm, mounting: THR soldering, pin layout: Linear pinning, solder pin [P]: 2.5 mm, number of solder pins per potential: 1, plug-in system: COMBICON MSTB 2,5, locking: without, type of packaging: 44 mm wide tape, Article with lateral pin exit

---

## PCB header

PCB header - MSTBO 2,5/ 3-G1PL GY7035 - 2200328

<https://www.phoenixcontact.com/us/products/2200328>



PCB headers, nominal cross section: 2.5 mm<sup>2</sup>, color: light grey, nominal current: 16 A, rated voltage (III/2): 320 V, contact surface: Tin, type of contact: Male connector, number of rows: 1, number of positions: 3, product range: MSTBO 2,5/-G1PL, pitch: 5 mm, mounting: Wave soldering, pin layout: Linear pinning, solder pin [P]: 3.5 mm, number of solder pins per potential: 1, locking: without, type of packaging: packed in cardboard, Product with pin output on left side

# Electronic housing - ME MAX 35 U-U1 KMGY



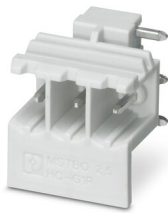
2713667

<https://www.phoenixcontact.com/us/products/2713667>

## PCB header

PCB header - MSTBO 2,5/ 3-G1PR GY7035 - 2200329

<https://www.phoenixcontact.com/us/products/2200329>



PCB headers, nominal cross section: 2.5 mm<sup>2</sup>, color: light grey, nominal current: 16 A, rated voltage (III/2): 320 V, contact surface: Tin, type of contact: Male connector, number of rows: 1, number of positions: 3, product range: MSTBO 2,5/...-G1PR, pitch: 5 mm, mounting: Wave soldering, pin layout: Linear pinning, solder pin [P]: 3.5 mm, number of solder pins per potential: 1, locking: without, type of packaging: packed in cardboard, Product with pin output on right side

## Printed-circuit board connector

Printed-circuit board connector - PSPT 2,5/ 3-ST KMGY - 2202345

<https://www.phoenixcontact.com/us/products/2202345>



PCB connector, nominal cross section: 2.5 mm<sup>2</sup>, color: light grey, nominal current: 16 A, rated voltage (III/2): 300 V, contact surface: Tin, type of contact: Female connector, number of potentials: 3, number of rows: 1, number of positions: 3, number of connections: 3, product range: PSPT 2,5/...-ST, pitch: 5 mm, connection method: Push-in spring connection, conductor/PCB connection direction: 0 °, locking clip: - Locking clip, locking: without, mounting: without, type of packaging: packed in cardboard, Color of the spring lever: orange

2713667

<https://www.phoenixcontact.com/us/products/2713667>

## Printed-circuit board connector

Printed-circuit board connector - MSTBT 2,5 HC/ 3-STP GY7035 - 2200333

<https://www.phoenixcontact.com/us/products/2200333>



PCB connector, nominal cross section: 2.5 mm<sup>2</sup>, color: light grey, nominal current: 16 A, rated voltage (III/2): 320 V, contact surface: Tin, type of contact: Female connector, number of rows: 1, number of positions: 3, product range: MSTBT 2,5 HC/...-STP, pitch: 5 mm, connection method: Screw connection with tension sleeve, conductor/PCB connection direction: 0 °, locking clip: - Locking clip, plug-in system: COMBICON MSTB 2,5 HC, locking: without, mounting: without, type of packaging: packed in cardboard

---

## PCB header

PCB header - GMSTBO 2,5 HV/ 2-GL-7,25 THR - 2199867

<https://www.phoenixcontact.com/us/products/2199867>



PCB headers, nominal cross section: 2.5 mm<sup>2</sup>, color: black, nominal current: 16 A, rated voltage (III/2): 630 V, type of contact: Male connector, number of potentials: 2, number of rows: 1, number of positions: 2, number of connections: 2, product range: GMSTBO 2,5 HV, pitch: 7.25 mm, mounting: THR soldering, pin layout: Linear pinning, solder pin [P]: 2.1 mm, number of solder pins per potential: 1, plug-in system: COMBICON MSTB 2,5, Pin connector pattern alignment: Standard, type of packaging: packed in cardboard, Product with pin output on left side

2713667

<https://www.phoenixcontact.com/us/products/2713667>

## PCB header

PCB header - GMSTBO 2,5 HV/ 2-GR-7,25 THR - 2199760

<https://www.phoenixcontact.com/us/products/2199760>



PCB headers, nominal cross section: 2.5 mm<sup>2</sup>, color: black, nominal current: 16 A, rated voltage (III/2): 630 V, type of contact: Male connector, number of potentials: 2, number of rows: 1, number of positions: 2, number of connections: 2, product range: GMSTBO 2,5 HV, pitch: 7.25 mm, mounting: THR soldering, pin layout: Linear pinning, solder pin [P]: 2.1 mm, number of solder pins per potential: 1, plug-in system: COMBICON MSTB 2,5, Pin connector pattern alignment: Standard, type of packaging: packed in cardboard, Product with pin output on right side

---

## Printed-circuit board connector

Printed-circuit board connector - GMSTBT 2,5 HV/2-ST-7,25 GY7035 - 2199757

<https://www.phoenixcontact.com/us/products/2199757>



PCB connector, nominal cross section: 2.5 mm<sup>2</sup>, color: light grey, nominal current: 16 A, rated voltage (III/2): 1000 V, contact surface: Tin, type of contact: Female connector, number of rows: 1, number of positions: 2, product range: GMSTBT 2,5 HV/...-ST, pitch: 7.25 mm, connection method: Screw connection with tension sleeve, conductor/PCB connection direction: 0 °, locking clip: - Locking clip, locking: without, mounting: without, type of packaging: packed in cardboard



# Electronic housing - ME MAX 35 U-U1 KMGY



2713667

<https://www.phoenixcontact.com/us/products/2713667>

## Filler plugs

Filler plugs - ME MAX B-17,5 KMGY - 2706959

<https://www.phoenixcontact.com/us/products/2706959>



DIN rail housing, Filler plug for unoccupied terminal points, width: 15 mm, height: 21.6 mm, depth: 8.1 mm, color: light grey (7035)

---

## PCB header

PCB header - MSTBO 2,5/ 3-G1L KMGY AU - 1077605

<https://www.phoenixcontact.com/us/products/1077605>



PCB headers, color: light grey, contact surface: Gold, number of rows: 1, number of positions: 3, product range: MSTBO 2,5/..-G1L Au, pitch: 5 mm, mounting: Wave soldering, pin layout: Linear pinning, solder pin [P]: 3.5 mm, number of solder pins per potential: 1, locking: without, type of packaging: packed in cardboard, Product with pin output on left side

2713667

<https://www.phoenixcontact.com/us/products/2713667>

## PCB header

PCB header - MSTBO 2,5/ 3-G1R KMGY AU - 1077606

<https://www.phoenixcontact.com/us/products/1077606>



PCB headers, color: light grey, contact surface: Gold, number of rows: 1, number of positions: 3, product range: MSTBO 2,5/..-G1R Au, pitch: 5 mm, mounting: Wave soldering, pin layout: Linear pinning, solder pin [P]: 3.5 mm, number of solder pins per potential: 1, locking: without, type of packaging: packed in cardboard, Product with pin output on right side

---

## PCB terminal block

PCB terminal block - MKDSO 1,5/ 4-L-3,5 KMGY - 2278432

<https://www.phoenixcontact.com/us/products/2278432>



PCB terminal block, nominal current: 8 A, rated voltage (III/2): 160 V, nominal cross section: 1.5 mm<sup>2</sup>, number of potentials: 4, number of rows: 1, number of positions per row: 4, product range: MKDSO 1,5/..-L, pitch: 3.5 mm, connection method: Screw connection with tension sleeve, mounting: Wave soldering, conductor/PCB connection direction: 0 °, color: light grey, Pin layout: Linear pinning, Solder pin [P]: 3 mm, number of solder pins per potential: 1, type of packaging: packed in cardboard. Product with pin output on left side

2713667

<https://www.phoenixcontact.com/us/products/2713667>

## PCB terminal block

PCB terminal block - MKDSO 1,5/ 4-R-3,5 KMGY - 2278429

<https://www.phoenixcontact.com/us/products/2278429>



PCB terminal block, nominal current: 8 A, rated voltage (III/2): 160 V, nominal cross section: 1.5 mm<sup>2</sup>, number of potentials: 4, number of rows: 1, number of positions per row: 4, product range: MKDSO 1,5/...-R, pitch: 3.5 mm, connection method: Screw connection with tension sleeve, mounting: Wave soldering, conductor/PCB connection direction: 0 °, color: light grey, Pin layout: Linear pinning, Solder pin [P]: 3 mm, number of solder pins per potential: 1, type of packaging: packed in cardboard. Product with pin output on right side

---

## PCB terminal block

PCB terminal block - MKDSO 2,5/ 3-L KMGY - 2854102

<https://www.phoenixcontact.com/us/products/2854102>



PCB terminal block, nominal current: 24 A, rated voltage (III/2): 400 V, nominal cross section: 2.5 mm<sup>2</sup>, number of potentials: 3, number of rows: 1, number of positions per row: 3, product range: MKDSO 2,5/...-L, pitch: 5 mm, connection method: Screw connection with tension sleeve, mounting: Wave soldering, conductor/PCB connection direction: 0 °, color: light grey, Pin layout: Linear pinning, Solder pin [P]: 3.5 mm, number of solder pins per potential: 1, type of packaging: packed in cardboard. Product with pin output on left side

2713667

<https://www.phoenixcontact.com/us/products/2713667>

## PCB terminal block

PCB terminal block - MKDSO 2,5/ 3-R KMGY - 2854092

<https://www.phoenixcontact.com/us/products/2854092>



PCB terminal block, nominal current: 24 A, rated voltage (III/2): 400 V, nominal cross section: 2.5 mm<sup>2</sup>, number of potentials: 3, number of rows: 1, number of positions per row: 3, product range: MKDSO 2,5/...-R, pitch: 5 mm, connection method: Screw connection with tension sleeve, mounting: Wave soldering, conductor/PCB connection direction: 0 °, color: light grey, Pin layout: Linear pinning, Solder pin [P]: 3.5 mm, number of solder pins per potential: 1, type of packaging: packed in cardboard. Product with pin output on right side

---

## PCB terminal block

PCB terminal block - MKDSO 2,5 HV/ 2L-7,5 KMGY - 2199676

<https://www.phoenixcontact.com/us/products/2199676>



PCB terminal block, nominal current: 24 A, rated voltage (III/2): 630 V, nominal cross section: 2.5 mm<sup>2</sup>, number of rows: 1, number of positions per row: 2, product range: MKDSO 2,5 HV/...-L, pitch: 7.5 mm, connection method: Screw connection with tension sleeve, mounting: Wave soldering, conductor/PCB connection direction: 0 °, color: light grey, Pin layout: Linear pinning, Solder pin [P]: 3.5 mm, number of solder pins per potential: 1. Product with pin output on left side

2713667

<https://www.phoenixcontact.com/us/products/2713667>

## PCB terminal block

PCB terminal block - MKDSO 2,5 HV/ 2R-7,5 KMGY - 2199773

<https://www.phoenixcontact.com/us/products/2199773>



PCB terminal block, nominal current: 24 A, rated voltage (III/2): 630 V, nominal cross section: 2.5 mm<sup>2</sup>, number of rows: 1, number of positions per row: 2, product range: MKDSO 2,5 HV/...-R, pitch: 7.5 mm, connection method: Screw connection with tension sleeve, mounting: Wave soldering, conductor/PCB connection direction: 0 °, color: light grey, Pin layout: Linear pinning, Solder pin [P]: 2.25 mm, number of solder pins per potential: 1. Product with pin output on right side

---

## PCB terminal block

PCB terminal block - FKDSO 2,5/ 3-L KMGY - 2200318

<https://www.phoenixcontact.com/us/products/2200318>



PCB terminal block, nominal current: 22 A, rated voltage (III/2): 250 V, nominal cross section: 2.5 mm<sup>2</sup>, number of potentials: 3, number of rows: 1, number of positions per row: 3, product range: FKDSO 2,5/...-L, pitch: 5 mm, connection method: Push-in spring connection, mounting: Wave soldering, conductor/PCB connection direction: 0 °, color: light grey, Pin layout: Linear pinning, Solder pin [P]: 3.5 mm, number of solder pins per potential: 1, type of packaging: packed in cardboard. Product with pin output on left side

# Electronic housing - ME MAX 35 U-U1 KMGY



2713667

<https://www.phoenixcontact.com/us/products/2713667>

## PCB terminal block

PCB terminal block - FKDSO 2,5/ 3-R KMGY - 2200317

<https://www.phoenixcontact.com/us/products/2200317>



PCB terminal block, nominal current: 22 A, rated voltage (III/2): 250 V, nominal cross section: 2.5 mm<sup>2</sup>, number of potentials: 3, number of rows: 1, number of positions per row: 3, product range: FKDSO 2,5/...-R, pitch: 5 mm, connection method: Push-in spring connection, mounting: Wave soldering, conductor/PCB connection direction: 0 °, color: light grey, Pin layout: Linear pinning, Solder pin [P]: 3.5 mm, number of solder pins per potential: 1, type of packaging: packed in cardboard. Product with pin output on right side

---

## Accessories

### Functional ground contact

Functional ground contact - ME FE-CONTACT - 2908294

<https://www.phoenixcontact.com/us/products/2908294>



DIN rail housing, FE contact with soldering lug, width: 5 mm, height: 15.25 mm, depth: 9.5 mm, color: silver

2713667

<https://www.phoenixcontact.com/us/products/2713667>

## Filler plugs

Filler plugs - ME MAX B-17,5 KMGY - 2706959

<https://www.phoenixcontact.com/us/products/2706959>



DIN rail housing, Filler plug for unoccupied terminal points, width: 15 mm, height: 21.6 mm, depth: 8.1 mm, color: light grey (7035)

---

## Filler plugs

Filler plugs - ME MAX B-17,5 GN - 2706991

<https://www.phoenixcontact.com/us/products/2706991>



DIN rail housing, Filler plug for unoccupied terminal points, width: 15 mm, height: 21.6 mm, depth: 8.1 mm, color: green (6021)

# Electronic housing - ME MAX 35 U-U1 KMGY



2713667

<https://www.phoenixcontact.com/us/products/2713667>

## Fiber optic

Fiber optic - HS LC-H-D3/ R1XC1 - 2202313

<https://www.phoenixcontact.com/us/products/2202313>



Multiple light guides, passive, rigid, can be used for the ME, ME-MAX, ME-IO, ME PLC, and EH housing ranges (housing must be processed)

---

## Fiber optic

Fiber optic - HS LC-H-5X2/ R1XC1 - 2202314

<https://www.phoenixcontact.com/us/products/2202314>



Single light guide, passive, rigid, can be used for the ME, ME-MAX, ME-IO, ME PLC, and EH housing ranges (housing must be processed)



2713667

<https://www.phoenixcontact.com/us/products/2713667>

## Fiber optic

Fiber optic - HS LC-H-D3/ R2XC1-5,08 - 2202315

<https://www.phoenixcontact.com/us/products/2202315>

Multiple light guides, passive, rigid, can be used for the ME, ME-MAX, ME-IO, ME PLC, and EH housing ranges (housing must be processed)



---

## Fiber optic

Fiber optic - HS LC-H-D2/ R2XC1-2,54 - 2202316

<https://www.phoenixcontact.com/us/products/2202316>

Multiple light guides with glare protection, passive, rigid, can be used for the ME, ME-MAX, ME-IO, ME PLC, and EH housing ranges (housing must be processed)



# Electronic housing - ME MAX 35 U-U1 KMGY

2713667

<https://www.phoenixcontact.com/us/products/2713667>

## Fiber optic

Fiber optic - HS LC-H-D2/ R2XC2-2,54 - 2202317

<https://www.phoenixcontact.com/us/products/2202317>



Multiple light guides with glare protection, passive, rigid, can be used for the ME, ME-MAX, ME-IO, ME PLC, and EH housing ranges (housing must be processed)

---

## Fiber optic

Fiber optic - HS LC-H-D2/ R2XC5-2,54 - 2202318

<https://www.phoenixcontact.com/us/products/2202318>



Multiple light guides with glare protection, passive, rigid, can be used for the ME, ME-MAX, ME-IO, ME PLC, and EH housing ranges (housing must be processed)

# Electronic housing - ME MAX 35 U-U1 KMGY



2713667

<https://www.phoenixcontact.com/us/products/2713667>

## Fiber optic

Fiber optic - HS LC-H-D2/ R2XC10-2,54 - 2202319

<https://www.phoenixcontact.com/us/products/2202319>

Multiple light guides with glare protection, passive, rigid, can be used for the ME, ME-MAX, ME-IO, ME PLC, and EH housing ranges (housing must be processed)



---

## Fiber optic

Fiber optic - HS LC-H-D2C/ R2XC1-2,54 - 1036658

<https://www.phoenixcontact.com/us/products/1036658>

Multiple light guides with glare protection, passive, rigid, can be used for the ME, ME-MAX, ME-IO, ME PLC, and EH housing ranges (housing must be processed)



2713667

<https://www.phoenixcontact.com/us/products/2713667>

## Fiber optic

Fiber optic - HS LC-H-D2C/ R2XC2-2,54 - 1043044

<https://www.phoenixcontact.com/us/products/1043044>



Multiple light guides with glare protection, passive, rigid, can be used for the ME, ME-MAX, ME-IO, ME PLC, and EH housing ranges (housing must be processed)

---

## Fiber optic

Fiber optic - HS LC-H-D2C/ R2XC5-2,54 - 1071310

<https://www.phoenixcontact.com/us/products/1071310>



Multiple light guides with glare protection, passive, rigid, can be used for the ME, ME-MAX, ME-IO, ME PLC, and EH housing ranges (housing must be processed)

2713667

<https://www.phoenixcontact.com/us/products/2713667>

## Fiber optic

Fiber optic - HS LC-H-D2C/ R2XC10-2,54 - 1071314

<https://www.phoenixcontact.com/us/products/1071314>

Multiple light guides with glare protection, passive, rigid, can be used for the ME, ME-MAX, ME-IO, ME PLC, and EH housing ranges (housing must be processed)



---

## Fiber optic

Fiber optic - HS LC-H-D2/ R4XC5-2,54 - 2202321

<https://www.phoenixcontact.com/us/products/2202321>

Multiple light guides with glare protection, passive, rigid, can be used for the ME, ME-MAX, ME-IO, ME PLC, and EH housing ranges (housing must be processed)



2713667

<https://www.phoenixcontact.com/us/products/2713667>

## Fiber optic

Fiber optic - HS LC-H-D2C/ R4XC5-2,54 - 1071318

<https://www.phoenixcontact.com/us/products/1071318>



Multiple light guides with glare protection, passive, rigid, can be used for the ME, ME-MAX, ME-IO, ME PLC, and EH housing ranges (housing must be processed)

---

## Fiber optic

Fiber optic - HS LC-H-D2/ R4XC9-2,54 - 2202322

<https://www.phoenixcontact.com/us/products/2202322>



Multiple light guides with glare protection, passive, rigid, can be used for the ME, ME-MAX, ME-IO, ME PLC, and EH housing ranges (housing must be processed)

# Electronic housing - ME MAX 35 U-U1 KMGY



2713667

<https://www.phoenixcontact.com/us/products/2713667>

## Fiber optic

Fiber optic - HS LC-H-D2C/ R4XC9-2,54 - 1071321

<https://www.phoenixcontact.com/us/products/1071321>



Multiple light guides with glare protection, passive, rigid, can be used for the ME, ME-MAX, ME-IO, ME PLC, and EH housing ranges (housing must be processed)

---

## Fiber optic

Fiber optic - HS LC-H-D2/ R4XC10-2,54 - 2202323

<https://www.phoenixcontact.com/us/products/2202323>



Multiple light guides with glare protection, passive, rigid, can be used for the ME, ME-MAX, ME-IO, ME PLC, and EH housing ranges (housing must be processed)

# Electronic housing - ME MAX 35 U-U1 KMGY



2713667

<https://www.phoenixcontact.com/us/products/2713667>

## Fiber optic

Fiber optic - HS LC-H-D2C/ R4XC10-2,54 - 1071329

<https://www.phoenixcontact.com/us/products/1071329>



Multiple light guides with glare protection, passive, rigid, can be used for the ME, ME-MAX, ME-IO, ME PLC, and EH housing ranges (housing must be processed)

---

## Fiber optic

Fiber optic - HS LC-H-D2/ R4XC2-2,54 - 2202320

<https://www.phoenixcontact.com/us/products/2202320>



Multiple light guides with glare protection, passive, rigid, can be used for the ME, ME-MAX, ME-IO, ME PLC, and EH housing ranges (housing must be processed)



# Electronic housing - ME MAX 35 U-U1 KMGY



2713667

<https://www.phoenixcontact.com/us/products/2713667>

## Fiber optic

Fiber optic - HS LC-H-D2C/ R4XC2-2,54 - 1071316

<https://www.phoenixcontact.com/us/products/1071316>



Multiple light guides with glare protection, passive, rigid, can be used for the ME, ME-MAX, ME-IO, ME PLC, and EH housing ranges (housing must be processed)

---

## Base latch

Base latch - ME MF 17,5 - 2908281

<https://www.phoenixcontact.com/us/products/2908281>



Metal foot catch with spring, for intermediate elements.

# Electronic housing - ME MAX 35 U-U1 KMGY



2713667

<https://www.phoenixcontact.com/us/products/2713667>

## Functional ground contact

Functional ground contact - ME BUS FE CONTACT - 2278076

<https://www.phoenixcontact.com/us/products/2278076>



DIN rail housing, FE contact, width: 5 mm, height: 15.25 mm, depth: 9.5 mm, color: silver

---

## DIN rail bus connectors

DIN rail bus connectors - ME 17,5 TBUS 1,5/ 5-ST-3,81 KMGY - 2713645

<https://www.phoenixcontact.com/us/products/2713645>



DIN rail connector, color: light grey, nominal current: 8 A (parallel contacts), rated voltage (III/2): 125 V, number of positions: 5, pitch: 3.81 mm, mounting: DIN rail mounting, locking: without, mounting: without, type of packaging: packed in cardboard, Item with gold-plated contacts, bus connectors for connecting with electronics housings, 5 parallel contacts

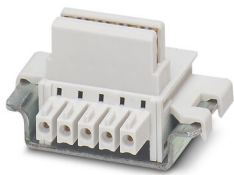
2713667

<https://www.phoenixcontact.com/us/products/2713667>

## DIN rail bus connectors

DIN rail bus connectors - ME 17,5 TBUS 1,5/4P1S KMGY - 2201731

<https://www.phoenixcontact.com/us/products/2201731>



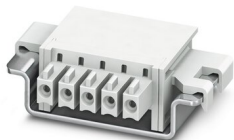
DIN rail connector, color: light grey, nominal current: 8 A, 8 A (parallel contacts) (Serial contacts), rated voltage (III/2): 50 V, number of positions: 5, pitch: 3.81 mm, mounting: DIN rail mounting, locking: without, mounting: without, type of packaging: packed in cardboard, Item with gold-plated contacts, bus connectors for connecting with electronics housings, 4 parallel contacts/1 serial contact

---

## DIN rail bus connectors

DIN rail bus connectors - ME 17,5 TBUS ADAPTER KMGY - 2201757

<https://www.phoenixcontact.com/us/products/2201757>



DIN rail bus adapter for ME and ME-MAX, design width: 17.5 mm, 5 parallel positions, color: light gray (similar to RAL 7035)

# Electronic housing - ME MAX 35 U-U1 KMGY

2713667

<https://www.phoenixcontact.com/us/products/2713667>

## Power connector

Power connector - PCO 17,5-L KMGY - 2201684

<https://www.phoenixcontact.com/us/products/2201684>



Power connector for ME-MAX housing, design width: 17.5 mm, 2 positions; used to transmit a total current of up to 42 A at 60 V DC.

---

## Filler plugs

Filler plugs - ME MAX TBUS BS KMGY - 2199650

<https://www.phoenixcontact.com/us/products/2199650>



DIN rail housing, Filler plugs for TBUS recess, width: 5.8 mm, height: 30 mm, depth: 6.6 mm, color: light grey (7035)

2713667

<https://www.phoenixcontact.com/us/products/2713667>

## End clamp

End clamp - E/ME TBUS NS35 GY - 2713780

<https://www.phoenixcontact.com/us/products/2713780>



End clamp, stable construction for DIN rail bus connector

---

## PCB connector

PCB connector - MC 1,5/ 5-ST-3,81 AU - 1860883

<https://www.phoenixcontact.com/us/products/1860883>



PCB connector, nominal cross section: 1.5 mm<sup>2</sup>, color: green, nominal current: 8 A, rated voltage (III/2): 160 V, contact surface: Gold, type of contact: Female connector, number of potentials: 5, number of rows: 1, number of positions: 5, number of connections: 5, product range: MC 1,5/-ST, pitch: 3.81 mm, connection method: Screw connection with tension sleeve, screw head form: L Slotted, conductor/PCB connection direction: 0 °, pin layout: Linear three-way pinning, number of solder pins per potential: 1, plug-in system: COMBICON MC 1,5, locking: without, mounting: without, type of packaging: packed in cardboard

# Electronic housing - ME MAX 35 U-U1 KMGY



2713667

<https://www.phoenixcontact.com/us/products/2713667>

## Printed-circuit board connector

Printed-circuit board connector - IMC 1,5/ 5-ST-3,81 - 1857919

<https://www.phoenixcontact.com/us/products/1857919>



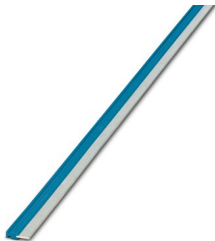
PCB connector, nominal cross section: 1.5 mm<sup>2</sup>, color: green, nominal current: 8 A, rated voltage (III/2): 160 V, contact surface: Tin, type of contact: Male connector, number of potentials: 5, number of rows: 1, number of positions: 5, number of connections: 5, product range: IMC 1,5/...-ST, pitch: 3.81 mm, connection method: Screw connection with tension sleeve, screw head form: L Slotted, conductor/PCB connection direction: 0 °, number of solder pins per potential: 1, plug-in system: COMBICON MC 1,5, locking: without, mounting: without, type of packaging: packed in cardboard

---

## Cross connection

Cross connection - PBR 42A BU - 2201916

<https://www.phoenixcontact.com/us/products/2201916>



Jumper for PCO power connector in ME-MAX housing, color: blue (similar to RAL 5015)

2713667

<https://www.phoenixcontact.com/us/products/2713667>

## Cross connection

Cross connection - PBR 42A GY - 2201917

<https://www.phoenixcontact.com/us/products/2201917>



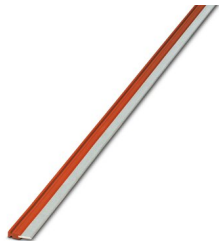
Jumper for PCO power connector in ME-MAX housing, color: gray (similar to RAL 7042)

---

## Cross connection

Cross connection - PBR 42A RD - 2201915

<https://www.phoenixcontact.com/us/products/2201915>



Jumper for PCO power connector in ME-MAX housing, color: red (similar to RAL 3000)

# Electronic housing - ME MAX 35 U-U1 KMGY



2713667

<https://www.phoenixcontact.com/us/products/2713667>

## Shield connection clamp

Shield connection clamp - ME-SAS - 2853899

<https://www.phoenixcontact.com/us/products/2853899>

Shield connection clamp for terminal points starting from 2.5 mm<sup>2</sup>



---

## Coding section

Coding section - CR MSTBO-G1 - 2199618

<https://www.phoenixcontact.com/us/products/2199618>

Coding section, inserted into the recess in the header or the inverted plug, red insulating material



---

Phoenix Contact 2022 © - all rights reserved  
<https://www.phoenixcontact.com>

Phoenix Contact USA  
586 Fulling Mill Road  
Middletown, PA 17057, United States  
(+717) 944-1300  
[info@phoenixcon.com](mailto:info@phoenixcon.com)