

# I/O module - IB ST 24 PT100 4/4



2752767

<https://www.phoenixcontact.com/us/products/2752767>

Please be informed that the data shown in this PDF document is generated from our Online Catalog. Please find the complete data in the user documentation. Our General Terms of Use for Downloads are valid.



INTERBUS-ST analog input module, 4 inputs, RTD, 2-, 3-, and 4-conductor connection, IP20 degree of protection, consisting of: terminal part with screw connection and module electronics

## Product Description

INTERBUS ST analog input modules for temperature and resistance measurement

These analog input modules are suitable for recording temperature signals.

Commercially available temperature measuring resistors or thermocouples can be connected.

In addition to the various types of sensors, different characteristics can also be programmed. Further features are:

- A new shielding concept for sensors makes it possible to meet more severe EMC requirements. For each input, there is a separate shield connection. External circuit elements are not necessary.
- Diagnostic LEDs provide information on the operating status at any time.
- All modules can be individually labeled on the large pull-out labeling field. The insert cards can be prepared by hand, or by plotter or printer.
- In the event of failure or malfunction, the electronics of the module can be easily replaced. The passive termination block remains mounted on the rail. This means that the replacement process can be carried out in a just a few seconds and without the need for tools.
- The fuses are accessible from outside, so that a fault can be cleared quickly.
- The connection to protective earth ground is made directly via the DIN rail.
- The conventional labeling materials (Zack strip ZB-6, etc.) can be used to label the termination blocks.

## Your advantages

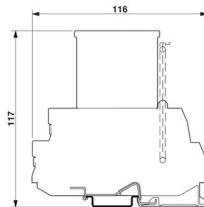
- Temperature measurement modules
- Standard signal types (voltage and current)

## Commercial Data

Item number	2752767
Packing unit	1 pc
Minimum order quantity	1 pc
Note	Made to Order (non-returnable)
Sales Key	C21
Product Key	DRI343
Catalog Page	Page 251 (C-8-2013)
GTIN	4017918062736
Weight per Piece (including packing)	598.8 g
Weight per Piece (excluding packing)	540 g
Customs tariff number	85389091
Country of origin	DE

## Technical Data

### Dimensions

Dimensional drawing	
Width	118 mm
Height	117 mm
Length	116 mm

### Notes

#### Utilization restriction

EMC note	EMC: class A product, see manufacturer's declaration in the download area
----------	---

### Interfaces

#### ST local bus

Connection method	ST local bus connector
Transmission speed	500 kbps
Transmission length	116 mm

### Product properties

Type	modular
	INTERBUS Smart Terminal
Product type	I/O component
No. of channels	4

### Electrical properties

No. of channels	4
Test section	Bus/Inputs 500 V AC 50 Hz 1 min.
	Supply voltage/inputs 500 V AC 50 Hz 1 min.
	Supply voltage/Ground conductor 500 V AC 50 Hz 1 min.
	I/O voltage/Ground conductor 500 V AC 50 Hz 1 min.

#### Supply

Communications power $U_L$	9 V DC (from the ST local bus)
I/O voltage	24 V DC
I/O voltage range	18.5 V DC ... 30.2 V DC
Residual ripple	± 1.2 V DC
Max. current consumption	100 mA (from the ST local bus)

# I/O module - IB ST 24 PT100 4/4

2752767

<https://www.phoenixcontact.com/us/products/2752767>



	85 mA (to U <sub>S</sub> )
Typical current consumption	85 mA (from the ST local bus)
	50 mA (to U <sub>S</sub> )

## Connection data

### Connection technology

Connection name	Termination block
-----------------	-------------------

### Conductor connection

Connection method	Screw connection
Conductor cross section solid	0.2 mm <sup>2</sup> ... 2.5 mm <sup>2</sup>
Conductor cross section flexible	0.2 mm <sup>2</sup> ... 2.5 mm <sup>2</sup>
Conductor cross section AWG	24 ... 12
Stripping length	8 mm

### Termination block

Connection method	Screw connection
Conductor cross section, rigid	0.2 mm <sup>2</sup> ... 2.5 mm <sup>2</sup>
Conductor cross section, flexible	0.2 mm <sup>2</sup> ... 2.5 mm <sup>2</sup>
Conductor cross section AWG	24 ... 12
Stripping length	8 mm

## Ambient conditions

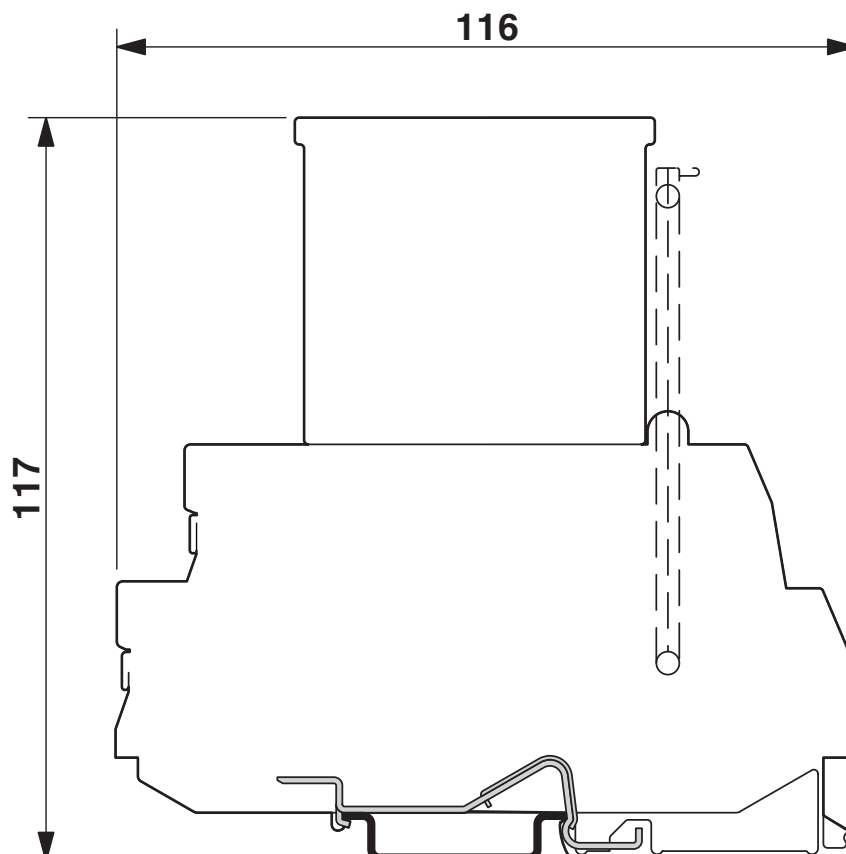
Degree of protection	IP20
----------------------	------

## Mounting

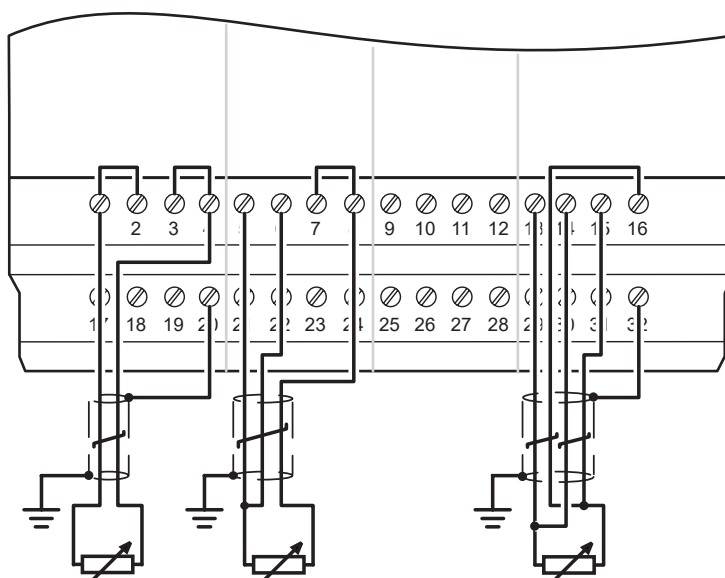
Mounting type	DIN rail mounting
---------------	-------------------

## Drawings

Dimensional drawing



Connection diagram



# I/O module - IB ST 24 PT100 4/4

2752767

<https://www.phoenixcontact.com/us/products/2752767>



## Classifications

### ECLASS

ECLASS-9.0	27242601
------------	----------

Environmental Product Compliance

China RoHS	Environmentally friendly use period: unlimited = EFUP-e
	No hazardous substances above threshold values

# I/O module - IB ST 24 PT100 4/4

2752767

<https://www.phoenixcontact.com/us/products/2752767>



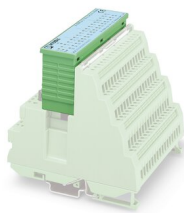
## Accessories

### Replacement electronics module

Replacement electronics module - IB STME 24 PT100 4/4 - 2750138

<https://www.phoenixcontact.com/us/products/2750138>

Replacement module electronics for IB ST (ZF) 24 Pt 100 4/4



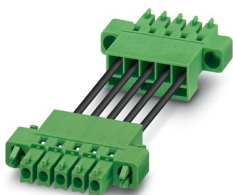
---

## Bridge

Bridge - IB ST LBC - 2836492

<https://www.phoenixcontact.com/us/products/2836492>

Spare local bus cable, for INTERBUS-ST modules



# I/O module - IB ST 24 PT100 4/4

2752767

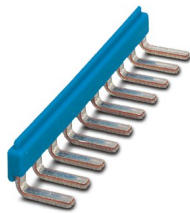
<https://www.phoenixcontact.com/us/products/2752767>



## Insertion bridge

Insertion bridge - EB 84 IB ST BU - 2836269

<https://www.phoenixcontact.com/us/products/2836269>



Insertion bridges, divisible, isolated comb spine, color blue, 84-pos.

---

## Insertion bridge

Insertion bridge - EB 84 IB ST RD - 2836272

<https://www.phoenixcontact.com/us/products/2836272>



Insertion bridges, divisible, isolated comb spine, color red, 84-pos.



# I/O module - IB ST 24 PT100 4/4

2752767

<https://www.phoenixcontact.com/us/products/2752767>



## Fuse

Fuse - IBS TR5 0,4AT - 2753478

<https://www.phoenixcontact.com/us/products/2753478>



Replacement fuse, for INTERBUS-ST modules

---

Phoenix Contact 2022 © - all rights reserved

<https://www.phoenixcontact.com>

Phoenix Contact USA  
586 Fulling Mill Road  
Middletown, PA 17057, United States  
(+717) 944-1300  
[info@phoenixcon.com](mailto:info@phoenixcon.com)