

I/O module - IB ST 24 BAI 8/U



2721015

<https://www.phoenixcontact.com/us/products/2721015>

Please be informed that the data shown in this PDF document is generated from our Online Catalog. Please find the complete data in the user documentation. Our General Terms of Use for Downloads are valid.



INTERBUS-ST analog input module, 8 inputs, 0 to 10 V, 0 to 5 V, 0 to 25 V, 0 to 50 V, IP20 protection, consisting of: Terminal part with screw connection and module electronics

Product Description

INTERBUS ST standard analog input modules

The wide range of INTERBUS analog input modules makes it possible to choose the ideal product for a variety of applications.

All commercially available analog standard sensors with voltage or current signals can be connected. Particular features of the INTERBUS analog input modules are:

- High accuracy of measurement
- Extremely rapid acquisition of measurement values
- Very good interference and common mode suppression
- A constant voltage source for the connection of passive sensors

Moreover, a host of measures guarantee a high standard of operational reliability, even under extreme industrial environmental conditions. In addition to integrated safety systems, such as:

- Watchdog monitoring of the processor, or
- Monitoring the supply voltage, in particular, comprehensive EMC measures, for example, a new shielding concept

There is a separate shield connection option for each input, without extra external wiring necessary. The connection to protective earth ground is created automatically when the module is snapped onto the DIN rail.

All the typical advantages of INTERBUS ST handling, such as multi-wire connection method and plug-in electronics are available.

Your advantages

- Temperature measurement modules
- Standard signal types (voltage and current)

Commercial Data

Item number	2721015
Packing unit	1 pc
Minimum order quantity	1 pc
Note	Made to Order (non-returnable)
Sales Key	C21
Product Key	DRI341
Catalog Page	Page 251 (C-8-2013)
GTIN	4017918126964
Weight per Piece (including packing)	660.5 g
Weight per Piece (excluding packing)	600 g
Customs tariff number	85389091
Country of origin	DE

I/O module - IB ST 24 BAI 8/U

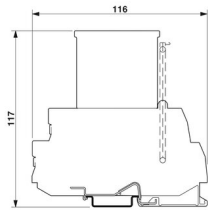


2721015

<https://www.phoenixcontact.com/us/products/2721015>

Technical Data

Dimensions

Dimensional drawing	
Width	118 mm
Height	117 mm
Length	116 mm

Notes

Utilization restriction

EMC note	EMC: class A product, see manufacturer's declaration in the download area
----------	---

Material specifications

Color	green
-------	-------

Interfaces

ST local bus

Connection method	ST local bus connector
Transmission speed	500 kbps
Transmission physics	Copper

Product properties

Type	modular
	INTERBUS Smart Terminal
Product type	I/O component
No. of channels	8

Electrical properties

No. of channels	8 (Single-ended voltage inputs)
Maximum power dissipation for nominal condition	1.632 W
Test section	Bus/Inputs 500 V AC 50 Hz 1 min.
	Supply voltage/inputs 500 V AC 50 Hz 1 min.
	Supply voltage/Ground conductor 500 V AC 50 Hz 1 min.
	I/O voltage/Ground conductor 500 V AC 50 Hz 1 min.

Supply

Communications power U_L	9 V DC (from the ST local bus)
----------------------------	--------------------------------

I/O voltage	± 24 V DC 5 % (ripple)
I/O voltage range	18.5 V DC ... 30.2 V DC
Max. current consumption	160 mA (without passive sensors)
Typical current consumption	68 mA (without passive sensors)

Connection data

Connection technology

Connection name	Termination block
-----------------	-------------------

Conductor connection

Connection method	Screw connection
Conductor cross section solid	0.2 mm² ... 2.5 mm²
Conductor cross section flexible	0.2 mm² ... 2.5 mm²
Conductor cross section AWG	24 ... 12
Stripping length	8 mm

Termination block

Connection method	Screw connection
Conductor cross section, rigid	0.2 mm² ... 2.5 mm²
Conductor cross section, flexible	0.2 mm² ... 2.5 mm²
Conductor cross section AWG	24 ... 12
Stripping length	8 mm

Ambient conditions

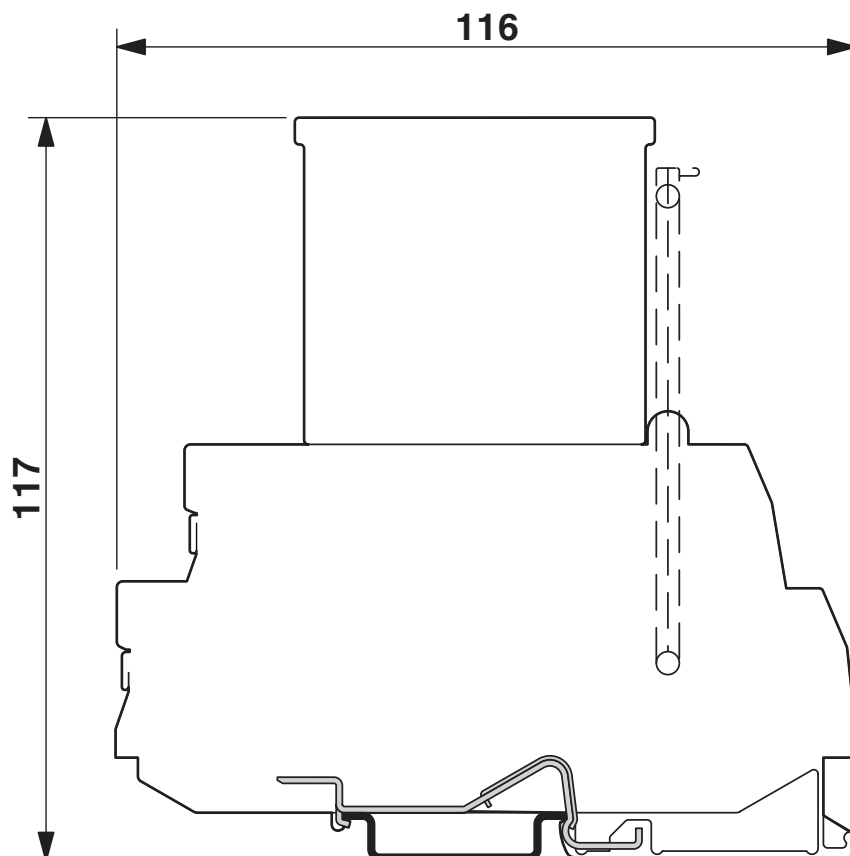
Degree of protection	IP20
----------------------	------

Mounting

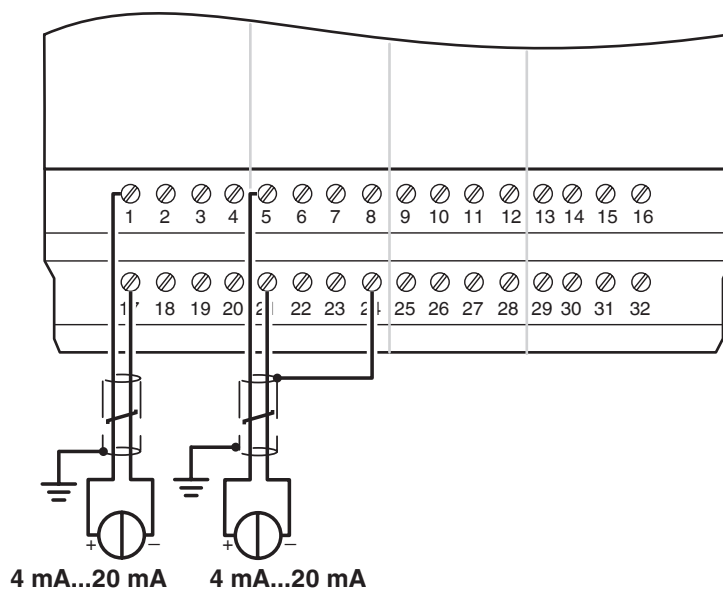
Mounting type	DIN rail mounting
---------------	-------------------

Drawings

Dimensional drawing



Connection diagram



I/O module - IB ST 24 BAI 8/U

2721015

<https://www.phoenixcontact.com/us/products/2721015>



Classifications

ECLASS

ECLASS-9.0	27242601
------------	----------

I/O module - IB ST 24 BAI 8/U

2721015

<https://www.phoenixcontact.com/us/products/2721015>



Accessories

Replacement electronics module

Replacement electronics module - IB STME 24 BAI 8/U - 2721219

<https://www.phoenixcontact.com/us/products/2721219>

Replacement module electronics for IB ST (ZF) 24 BAI 8/U

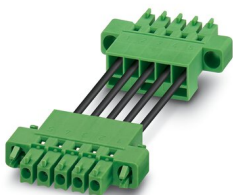


Bridge

Bridge - IB ST LBC - 2836492

<https://www.phoenixcontact.com/us/products/2836492>

Spare local bus cable, for INTERBUS-ST modules



I/O module - IB ST 24 BAI 8/U

2721015

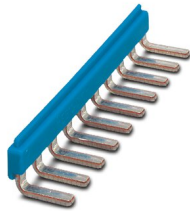
<https://www.phoenixcontact.com/us/products/2721015>



Insertion bridge

Insertion bridge - EB 84 IB ST BU - 2836269

<https://www.phoenixcontact.com/us/products/2836269>



Insertion bridges, divisible, isolated comb spine, color blue, 84-pos.

Insertion bridge

Insertion bridge - EB 84 IB ST RD - 2836272

<https://www.phoenixcontact.com/us/products/2836272>



Insertion bridges, divisible, isolated comb spine, color red, 84-pos.

I/O module - IB ST 24 BAI 8/U

2721015

<https://www.phoenixcontact.com/us/products/2721015>



Fuse

Fuse - IBS TR5 0,2AT - 2753452

<https://www.phoenixcontact.com/us/products/2753452>



Replacement fuse, for INTERBUS-ST modules

Fuse

Fuse - IBS TR5 0,4AT - 2753478

<https://www.phoenixcontact.com/us/products/2753478>



Replacement fuse, for INTERBUS-ST modules

I/O module - IB ST 24 BAI 8/U

2721015

<https://www.phoenixcontact.com/us/products/2721015>



Shield connection

Shield connection - UFBK-SAS - 2763756

<https://www.phoenixcontact.com/us/products/2763756>



Shield connection clamp for two PLUGTRAB base elements in versions: UFBK...
, UAK...

Phoenix Contact 2022 © - all rights reserved

<https://www.phoenixcontact.com>

Phoenix Contact USA
586 Fulling Mill Road
Middletown, PA 17057, United States
(+717) 944-1300
info@phoenixcon.com