

Surge protection plug - CT 10-9VA-120AC

2830485

<https://www.phoenixcontact.com/us/products/2830485>



Please be informed that the data shown in this PDF document is generated from our Online Catalog. Please find the complete data in the user documentation. Our General Terms of Use for Downloads are valid.

LSA-PLUS plug (COMTRAB CT 10) with surge protection incl. visual fault warning for nine 2-core signal circuits. Nominal voltage: 120 V AC. Design: 10 double wires



Commercial Data

Item number	2830485
Packing unit	1 pc
Minimum order quantity	1 pc
Note	Made to Order (non-returnable)
Sales Key	00
Product Key	CL3212
Catalog Page	Page 119 (TT-2011)
GTIN	4017918106560
Weight per Piece (including packing)	102.6 g
Weight per Piece (excluding packing)	80.61 g
Customs tariff number	85363010
Country of origin	DE

Surge protection plug - CT 10-9VA-120AC

2830485

<https://www.phoenixcontact.com/us/products/2830485>

Technical Data

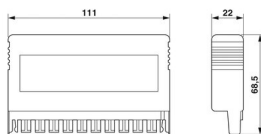
Product properties

IEC test classification	C1
	C3
Type	LSA-PLUS module
Product type	Surge protection for MCR technology
Arrester can be tested with CHECKMASTER from software version:	From SW rev. 1.00

Connection data

Connection method	can be plugged into COMTRAB-TERMIBLOCK and LSA-PLUS disconnect and switching strips
-------------------	---

Dimensions

Dimensional drawing	
Width	111 mm
Height	22 mm
Depth	68.5 mm

Material specifications

Color	black
Flammability rating according to UL 94	V2
Housing material	PBT

Mechanical properties

Mechanical data

Open side panel	No
-----------------	----

Protective circuit

Direction of action	Line-Line & Line-Earth Ground
Maximum continuous voltage U_C	200 V DC
	150 V AC
Maximum continuous voltage U_C (line-earth)	200 V DC
	150 V AC
Maximum continuous voltage U_C (line-signalground)	200 V DC
	150 V AC
Operating effective current I_C at U_C	≤ 1.5 mA
	≤ 2.5 mA
Residual current I_{PE}	≤ 1 μ A

Surge protection plug - CT 10-9VA-120AC



2830485

<https://www.phoenixcontact.com/us/products/2830485>

Nominal discharge surge current I_n (8/20) μ s (Core-Earth)	1.5 kA
Nominal discharge current I_n (8/20) μ s (line-signal ground)	1.5 kA
Nominal discharge current I_n (8/20) μ s (signalground-earth)	5 kA
Total surge current (8/20) μ s	5 kA
Max. discharge current I_{max} (8/20) μ s maximum (line-earth)	5 kA (10-PE)
Max. discharge current I_{max} (8/20) μ s maximum (line-signalground)	4.5 kA (10)
Residual voltage at I_n (conductor-ground)	≤ 1.4 kV
Residual voltage at I_n (line-signalground)	≤ 600 V
Residual voltage at I_n , fixed cable length	10 m
Max. energy absorption (2 ms), asym.	40 J
Voltage protection level U_p (line-earth)	≤ 1.4 kV (10-PE)
Voltage protection level U_p (line-signalground)	≤ 600 V (10)
Response time t_A (line-line)	≤ 25 ns
Response time t_A (line-earth)	≤ 100 ns
Response time t_A (line-signalground)	≤ 25 ns
Frequency range	50 Hz ... 60 Hz
Capacity (Core-Earth)	2 pF (10-PE)
Capacity (line-signalground)	570 pF (10)
Max. required back-up fuse	1.5 A (gL)

Environmental and real-life conditions

Ambient conditions

Degree of protection	IP20
Ambient temperature (operation)	-40 °C ... 85 °C

Standards and regulations

Air clearances and creepage distances

Standards/regulations	VDE 0110-1 / IEC 60664
-----------------------	------------------------

Standards Information technology specification

Standards/regulations	IEC 61643-21
	IEC 61643-21
Standards/specifications	IEC 61643-21

Mounting

Mounting type	On CT-TERMIBLOCK and LSA-PLUS disconnect strip
---------------	--

Surge protection plug - CT 10-9VA-120AC

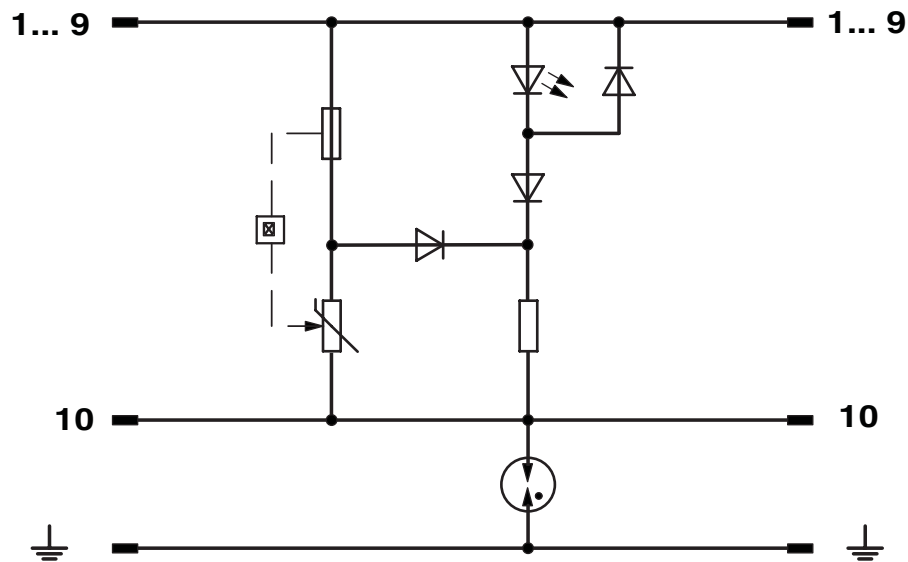
2830485

<https://www.phoenixcontact.com/us/products/2830485>

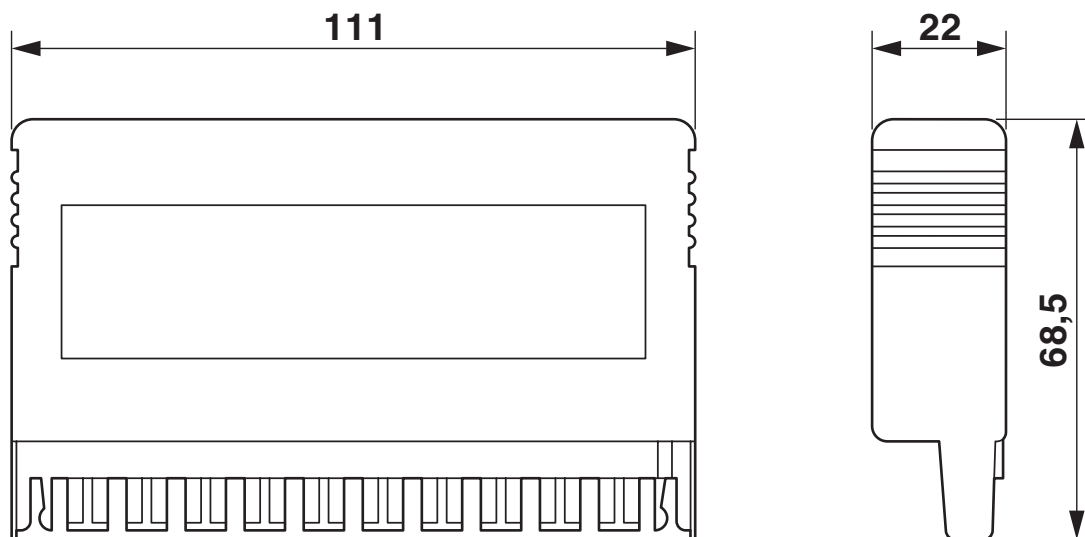


Drawings

Circuit diagram



Dimensional drawing



Surge protection plug - CT 10-9VA-120AC

2830485

<https://www.phoenixcontact.com/us/products/2830485>



Classifications

ECLASS

ECLASS-9.0	27130807
------------	----------

Surge protection plug - CT 10-9VA-120AC

2830485

<https://www.phoenixcontact.com/us/products/2830485>

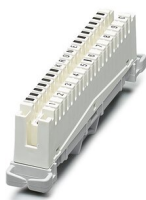


Mandatory Accessories

Disconnect strip

Disconnect strip - CT 10-TL - 2765356

<https://www.phoenixcontact.com/us/products/2765356>



LSA-PLUS disconnect strip to hold the CTM and CT 10 protection modules.
Version: 10 double conductors, dimension A: 124 mm.

Accessories

Screw termination block

Screw termination block - CT-TERMIBLOCK 10 DA - 0441711

<https://www.phoenixcontact.com/us/products/0441711>



Screw termination block with disconnect contacts for accommodating protective plugs CT and CTM. Use in MCR and telecommunications systems. Design: 10 double wires

Surge protection plug - CT 10-9VA-120AC



2830485

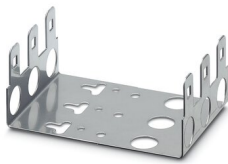
<https://www.phoenixcontact.com/us/products/2830485>

Mounting clip

Mounting clip - CT 10-MB/ 3 - 2765372

<https://www.phoenixcontact.com/us/products/2765372>

Mounting clip, for holding 3 disconnect or ground wire strips. Version: 10 double conductors, dimensions: A 104.5 mm, B 65 mm.



Shield connection

Shield connection - SSA 3-6 - 2839295

<https://www.phoenixcontact.com/us/products/2839295>

Shield fast connection for 3 ... 6 mm cable diameter. Potential connecting cable: 200 mm, 1 mm², color: black



Surge protection plug - CT 10-9VA-120AC

2830485

<https://www.phoenixcontact.com/us/products/2830485>



Shield connection

Shield connection - SSA 5-10 - 2839512

<https://www.phoenixcontact.com/us/products/2839512>



Shield fast connection for 5 ... 10 mm cable diameter. Potential connecting cable:
200 mm, 1 mm², color: black

Phoenix Contact 2022 © - all rights reserved

<https://www.phoenixcontact.com>

Phoenix Contact USA
586 Fulling Mill Road
Middletown, PA 17057, United States
(+717) 944-1300
info@phoenixcon.com