

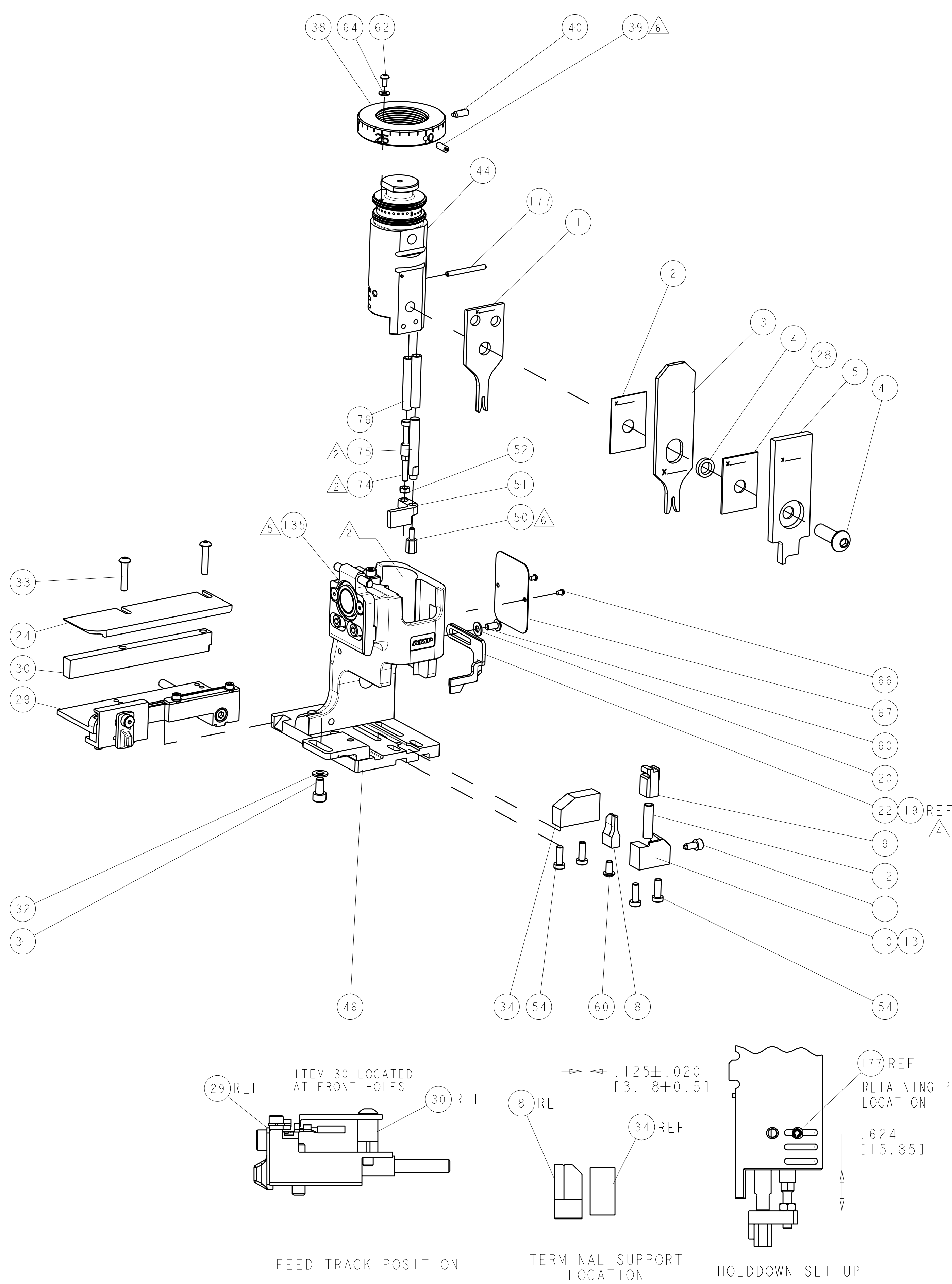
THIS DRAWING IS UNPUBLISHED.		RELEASED FOR PUBLICATION	
COPYRIGHT 20 BY TYCO ELECTRONICS CORPORATION, ALL RIGHTS RESERVED.			
PART NUMBER	REV	DESCRIPTION	PROGRAMMED MEMORY CHIP
1911219-1	A	CUTS CARRIER	8-1911219-1
1911219-6	A	CONTINUOUS CARRIER	8-1911219-6
7-1911219-1	A	-1 AND SPARE PARTS	9-1911219-1
7-1911219-6	A	-6 AND SPARE PARTS	9-1911219-6
7-1911219-7	A	SPARE PARTS KIT	-

APPLICATOR DATA		
CRIMP	SIZE	TYPE
WIRE	1.78mm [.070]	F
INSUL	2.29mm [.090]	O
APPL INSTRUCTIONS 408-10135		

TERMINAL DATA: TE TERMINAL		TYCO ELECTRONICS CRIMP SPEC
TERMINAL NAME: AMP MCP 1.5K FLAT TYPE RECEPTACLE		
WIRE STRIP LENGTH	INSULATION DIAMETER RANGE	
3.7-4.3 mm [.145-.169 IN]	1.40-2.10mm [.055-.082 IN]	
TERMINAL APPL SPEC	114-18386	
TERMINALS APPLIED		
1241374-1	1241374-2	1418408-1

WIRE SIZE	CRIMP HEIGHT
1mm <sup>2</sup>	1.26±.05 [-.050±.002]
0.75mm <sup>2</sup>	1.15±.05 [-.045±.002]
0.5mm <sup>2</sup>	1.04±.05 [-.041±.002]

- ⓘ RECOMMENDED SPARE PARTS.
- ⚠ GREASE BEARING SURFACES LIGHTLY.
- 3. LUBRICATE DAILY PER THE APPLICATOR INSTRUCTION SHEET SUPPLIED WITH THE APPLICATOR.
- ⚠ ITEM 19 - OPTIONAL STRIPPER FOR BENCH MACHINE APPLICATIONS.
- ⚠ APPLICATOR SPECIFIC DATA TO BE ENTERED INTO BLANK MEMORY CHIP AT ASSEMBLY.
- ⚠ APPLY P/N 1-23419-5 LOCTITE(R) TO THREADS.



FEED FINGER 1901694-1	SET UP GAGE 1901067-1	LOC A	DIST 66	REVISIONS			
		REV	DATE	BY	CHKD	APPD	
		A	29FEB2008	GH	TE		

-	1	1	1	1	1-993111-6	PIN, SLOTTED SPRING 3.0 X 30.0	177
-	2	2	2	2	3-22280-7	SPRING, COMPRESSION	176
-	1	1	1	1	1752353-1	GUIDE PIN, HOLDDOWN	175
-	1	1	1	1	1901680-1	GUIDE PIN, HOLDDOWN	174
-	REF	REF	REF	REF	SEE TABLE	MEMORY CHIP, PROGRAMMED	135
-	1	1	1	1	1633565-1	DOCUMENTATION PACKAGE	71
-	1	1	1	1	1901048-1	TAG, IDENTIFICATION	67
-	2	2	2	2	21017-1	SCREW, DRIVE	66
-	1	1	1	1	18028-1	WASHER, FLAT, REG M3	64
-	1	1	1	1	1655785-9	SCR, BTN SKT HD CAP (M3 X 6)	62
-	2	2	2	2	1655785-1	SCR, BTN SKT HD CAP (M4 X 8)	60
-	4	4	4	4	1655783-3	SCR, CAP, SOC HD, LOW HEAD, M4 X 12	54
-	1	1	1	1	1-18030-0	NUT, HEX, REG M3.5	52
-	1	1	1	1	1901681-1	HOLDDOWN, TERMINAL	51
-	1	1	1	1	1-1752354-9	STANDOFF, HOLD-DOWN	50
-	1	1	1	1	1752300-1	SF SYSTEM III APPLICATOR	46
-	1	1	1	1	1752308-1	RAM	44
-	1	1	1	1	2-1655785-3	SCR, BTN SKT HD CAP (M8 X 25)	41
-	1	1	1	1	993002-4	SCREW, SET, SFT TIP	40
-	1	1	1	1	1962043-1	PLUNGER, BALL, METRIC	39
-	1	1	1	1	1752309-1	RING, INSULATION CRIMP	38
-	1	1	1	1	1-1752356-7	SUPPORT, TERMINAL	34
-	2	2	2	2	3-1655785-3	SCR, BTN SKT HD CAP (M4 X 20)	33
-	1	1	1	1	18028-3	WASHER, FLAT, REG M5	32
-	1	1	1	1	5-1655316-3	SCR, SKT HD CAP, M5 X 10.0	31
-	1	1	1	1	1320908-1	SPACER, STRIP GUIDE	30
-	1	1	1	1	1901087-3	ASSEMBLY, STRIP GUIDE	29
-	1	1	1	1	1-455888-0	SPACER, CRIMPER	28
-	1	1	1	1	1320928-1	PLATE, STRIP GUIDE	24
-	1	1	1	1	1976045-1	STRIPPER	22
-	1	1	1	1	18028-2	WASHER, FLAT, REG M4	20
-	REF	REF	REF	REF	1752311-1	STRIPPER	19
-	1	-	1	-	1338684-1	SHEAR HOLDER, FRONT	13
-	1	1	1	1	3-22280-3	SPRING, COMPRESSION	12
-	1	1	1	1	356885-4	STOP, SHEAR	11
-	-	1	-	1	1320921-1	SHEAR HOLDER, FRONT, CUT	10
-	1	1	1	1	454276-1	FLOATING SHEAR, FRONT	9
-	1	2	1	1	1-1333203-5	ANVIL, COMBINATION	8
-	1	1	1	1	1-455889-4	DEPRESSOR, SHEAR	5
-	1	1	1	1	238011-9	BLOCK, CRIMPER SPACER	4
-	1	2	2	1	8-456135-0	CRIMPER, INSULATION O PREMIUM	3
-	1	1	1	1	455888-5	SPACER, CRIMPER	2
-	1	2	2	1	3-456404-5	CRIMPER, WIRE PREMIUM	1
-	77	-76	-71	-6	-1	PART NO	ITEM NO

DIMENSIONS: INCHES(mm)		TOLERANCES UNLESS OTHERWISE SPECIFIED:		DWN HOFFNER 15FEB2008		Tyco Electronics Tyco Electronics Harrisburg, PA 17105-3608	
9 PLC	±	9 PLC	±	CHK G. BALLEY 18FEB2008	NAME SIDE FEED SYSTEM III APPLICATOR		
1 PLC	±	1 PLC	±	APPD G. BALLEY 18FEB2008	SIZE CAGE CODE DRAWING NO RESTRICTED TO		
5 PLC	±	5 PLC	±	PRODUCT SPEC	A 00779 C-1911219		
4 PLC	±	4 PLC	±	APPLICATION SPEC	SCALE 3:5 SHEET 1 OF 1 REV A		
ANGLES	±	ANGLES	±	SEE TABLE	CUSTOMER DRAWING		
MATERIAL		FINISH		WEIGHT			

# Mouser Electronics

Authorized Distributor

Click to View Pricing, Inventory, Delivery & Lifecycle Information:

[TE Connectivity:](#)

[7-1911219-7](#)