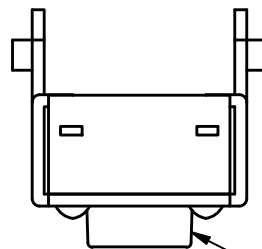
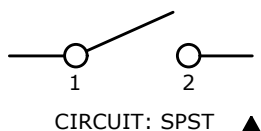
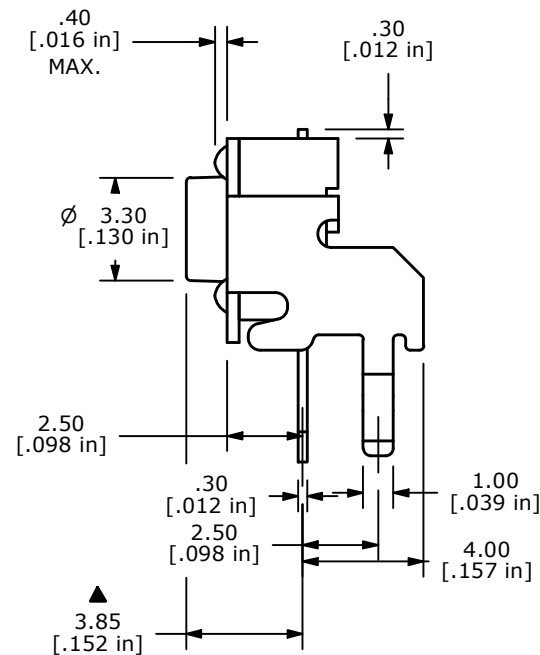
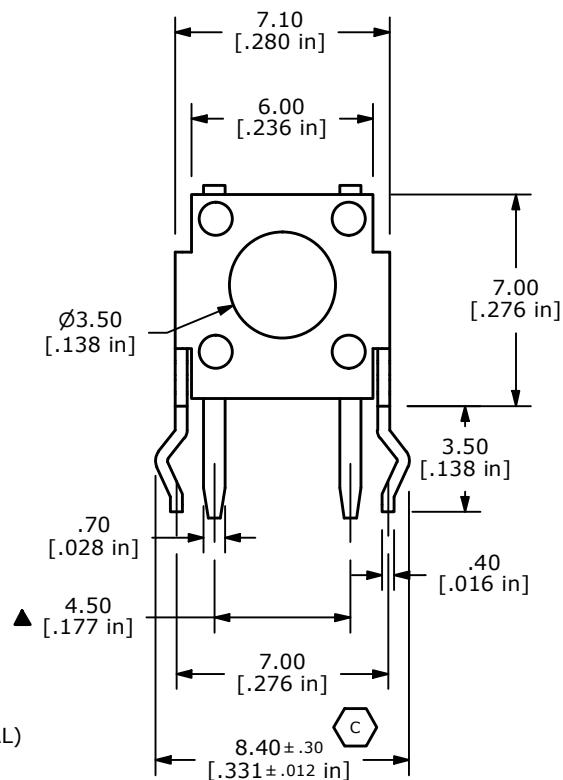
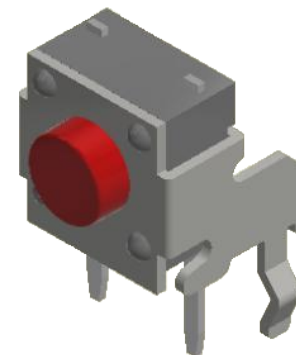


P.C.B. LAYOUT



▲ ACTUATOR
COLOR: RED



NOTES:

1. ALL DIMENSIONS IN MM
2. GENERAL TOLERANCE: X.X=±0.4
X.XX=±0.25
3. TERM. NOS. FOR REFERENCE ONLY.
4. RATING: 50VDC, 50mA
- ▲ 5. OPERATING FORCE: 250 ± 50 gf
6. TRAVEL: 0.3 ± 0.15 mm
7. CONTACT RESISTANCE: 100 MILLI OHMS MAX. (INITIAL)
8. MECHANICAL/ELECTRICAL LIFE 100,000 CYCLES MIN.
- ▲ 9. CONTACT MATERIAL: SILVER
10. ▲ DENOTES CRITICAL PARAMETER
11. OPERATING TEMP: -40°C TO 85°C



D	24548	REMOVE STEP IN HOUSING, CHANGE TEMP	10/19/20	BLR
C	18677	LEG TOLERANCE WAS +/- 0.1	10/9/09	BLR
REV	PCR NO	DESCRIPTION	DATE	BY

TITLE TL1105VF250Q				
SCALE	DATE	DR	DWG	REV
4:1	10/9/2009	BLR	P010306	D

THE INFORMATION CONTAINED IN THIS DOCUMENT IS PROPRIETARY TO E-SWITCH AND IS NOT TO BE COPIED OR TRANSFERRED