

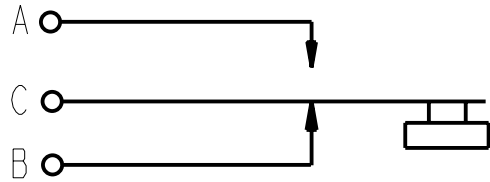
PART NUMBER	PART REV.	BUTTON COLOR	SCHEMATIC
903X	A	RED	I-C
903DX	A	RED	I-D
913X	A	BLACK	I-C
913DX	A	BLACK	I-D

NOTES:

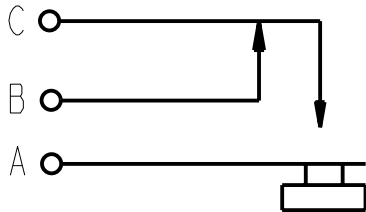
- 1. WHITE DOT DESIGNATES "I-D SCHEMATIC".
- 2. HEX NUT AND LOCKWASHER ARE SHIPPED UNASSEMBLED.
- 3. ALL DIMENSIONS ARE REFERENCE.
- 4. THESE PRODUCTS ARE RoHS COMPLIANT.

SPECIFICATIONS:

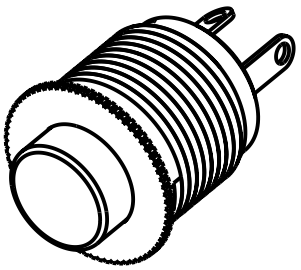
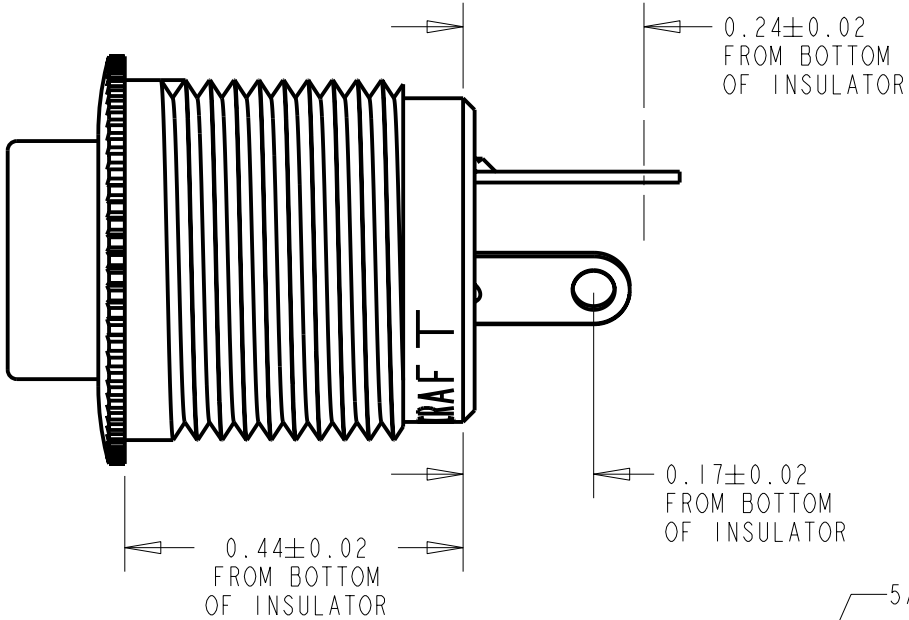
- 1. PUSHBUTTON - PLASTIC, SEE TABLE FOR COLOR
- 2. HOUSING - BRASS, NICKEL PLATED
- 3. TERMINALS - BRASS, SILVER PLATED
- 4. CONTACTORS - BRASS, SILVER PLATED
- 5. INSULATORS - PHENOLIC
- 6. SPRING - SILVER PLATED
- 7. HEX NUT - BRASS, NICKEL PLATED
- 8. WASHER - STEEL, NICKEL PLATED



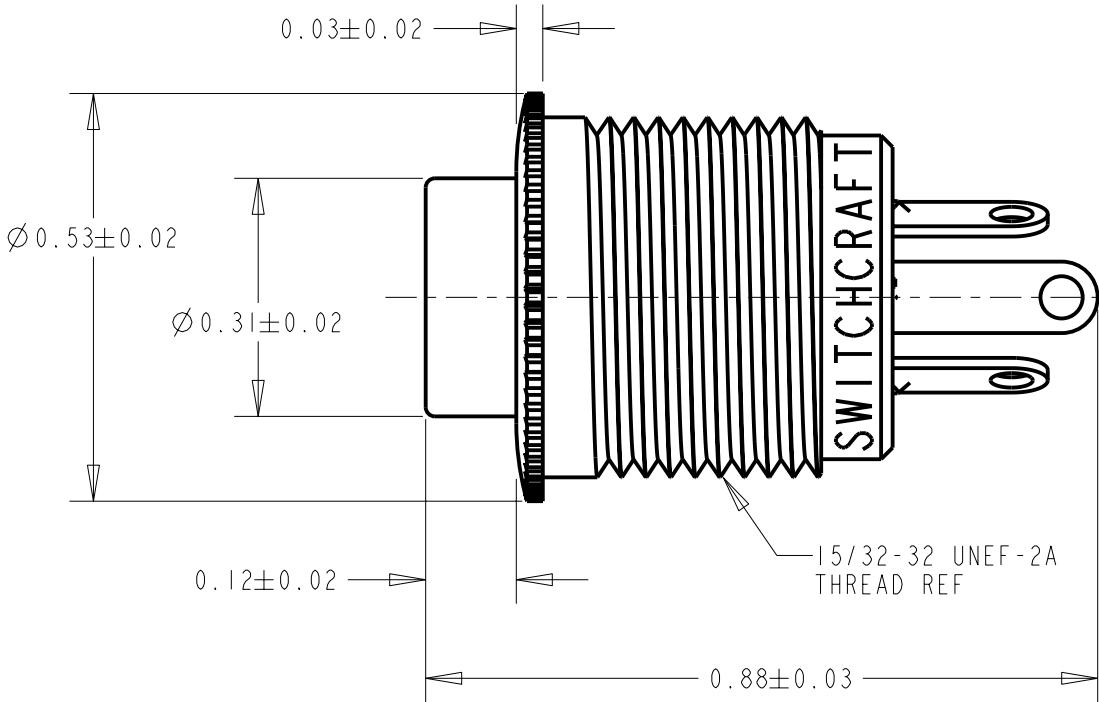
903X & 913X
SCHEMATIC
I-C



903DX & 913DX
SCHEMATIC
I-D



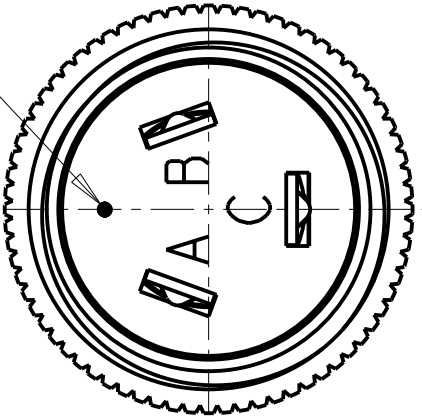
SCALE 2:1



5/8 O.D. INT. LOCKWASHER

15/32-32 HEX NUT 1/16 THICK

WHITE DOT
SEE NOTE 1



CUSTOMER DRAWING

					★ STAR SYMBOL DENOTES CRITICAL DIMENSION	THIS DRAWING DESCRIBES A DESIGN CONSIDERED PROPRIETARY IN NATURE, DEVELOPED AND MANUFACTURED BY SWITCHCRAFT INC. AND IS RELEASED ON A CONFIDENTIAL BASIS FOR IDENTIFICATION PURPOSES ONLY.						
					UNLESS OTHERWISE SPECIFIED 1. ALL DIMENSIONS IN INCHES -TWO PLACE DECIMALS ±0.01 -THREE PLACE DECIMALS ±0.005 -ANGLES ±1° -ALL DIA. CONCENTRIC WITHIN 0.005 T.I.R. 2. FEATURES ON THE SAME CENTERLINE MUST BE ALIGNED WITHIN ±0.002 3. REMOVE ALL BURRS	SIZE	WIDTH	MULT	LBS/M	TEMPER		
						FINISH			MATERIAL			
						SPEC No.			SPEC No.			
						FIRST USED ON		SCALE 4:1		Switchcraft®		
						DATE DRAWN	BY	CHKD	APVD			
A	ECO #25286	1-18-07	TJK	TJK		18-Jan-07	TJK	TJK 1-18-07	TJK 1-18-07	SHEET OF		
REV	ECO NUMBER	DATE	BY	APVD		NAME			PART No. 903X & 913X 903DX & 913DX		REV A	
REVISIONS					DO NOT SCALE DRAWING	BUTTON SWITCH, RoHS						

Mouser Electronics

Authorized Distributor

Click to View Pricing, Inventory, Delivery & Lifecycle Information:

Switchcraft:

903X 913X 913DX