

SPECIFICATION

规格

1. Rating :DC 20V 5.5A;

额定值: 直流20V 5.5A;

2. Contact resistance: <0.03Ω;

接触电阻: <0.03Ω;

3. Insulation resistance: 2100MΩ(DC250V)

绝缘电阻: 2100MΩ(DC250V)

4. Withstand voltage: 500VAC

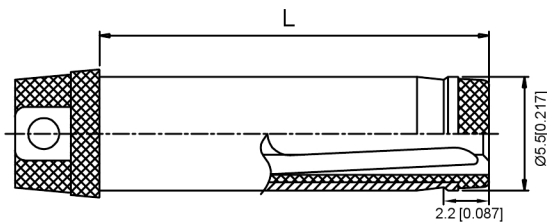
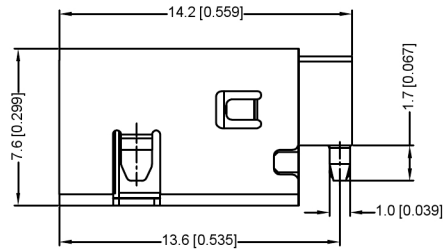
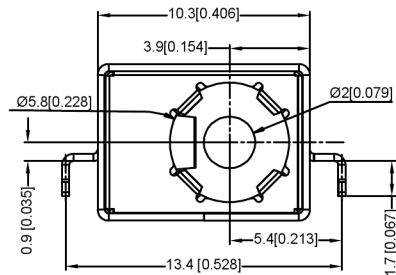
耐压: 500VAC

5. Insertion and extraction force: 3-30N;

插拔力: 3-30N;

6. life test: 5,000 cycles.

寿命试验: 5,000次循环。



RECOMMENDED PLUG

SCHEMATIC	
Model	DC-C033D-5.5A
Center Pin	Ø2.0 mm
	Ø2.5 mm

	MATERIAL	PLATING
center pin	Brass	tin
coat	Sus	
terminal 2	Phosphor Bronze	tin
terminal 3	Brass	tin
terminal 4	Brass	tin
terminal 5	Brass	tin
plastic	Pa9t	

广东星坤科技股份有限公司

ΔX	日期
ΔX	日期
ΔX	日期
MARK	DESCRIPTION

文件工程章

REVISIONS	DATE	REVISED	APPROVED	UNSPECIFIED TOLERANCES
				ANGULAR ±5°
				L ≤ 4 ±0.2
				4 < L ≤ 16 ±0.3
				16 < L ≤ 63 ±0.4
				L > 63 ±0.5

www.helloxkb.com www.helloxkb.cn www.xk-dg.cn



DSND		SCALE: N/A	MODEL TYPE: DC POWER JACK
DWN		VIEW:	PART NO.: DC-C033D-5.5A-2.5
CHKD		UNIT: mm/in	DWG NO.:
APPD		SIZE: A4	

XKB INDUSTRIAL PRECISION CO., LIMITED

WEIGHT	SHEET	REVISIC
	1/1	A0