

MICRO SWITCH

FREEPORT, ILLINOIS, U S A

A DIVISION OF HONEYWELL

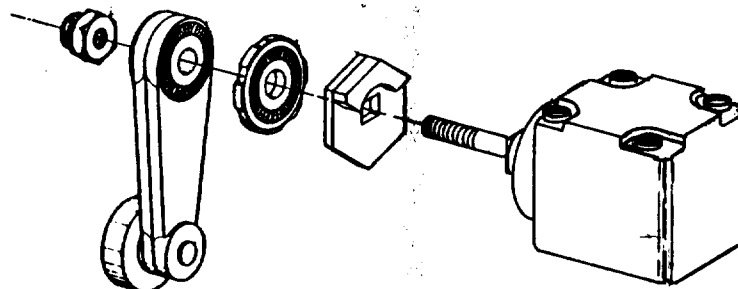
FED. MFG. CODE 91929

PACKET

CATALOG LISTING

9PA8

THIS DRAWING COVERS A PROPRIETARY ITEM AND IS THE PROPERTY OF MICRO SWITCH, A DIVISION OF HONEYWELL. THIS DRAWING IS NOT TO BE COPIED OR USED WITHOUT THE APPROVAL OF MICRO SWITCH.



ADJUSTABLE TO OPERATE CLOCKWISE, COUNTER-CLOCKWISE, OR IN BOTH DIRECTIONS.

AS FACTORY ASSEMBLED THE SWITCH MAY BE ACTUATED BY EITHER CLOCKWISE OR COUNTER-CLOCKWISE MOVEMENT OF THE ROLLER ARM.

TO CONVERT THE SWITCH FOR ACTUATION EITHER CLOCKWISE OR COUNTER-CLOCKWISE DIRECTION ONLY: SLIDE THE CAM TOWARD THE REAR OF THE HEAD SUFFICIENTLY TO DISENGAGE FROM THE FLATS ON THE SHAFT. ROTATE THE CAM 90° IN THE OPPOSITE DIRECTION OF THE ACTUATION DESIRED AND RE-ENGAGE THE CAM WITH THE FLATS ON THE SHAFT.

NOTE: WHEN SWITCH IS ADJUSTED FOR OPERATION IN ONE DIRECTION ONLY, THE ARM MAY BE MOVED TO THE FULL OVERTRAVEL POSITION IN THE OPPOSITE DIRECTION WITHOUT DAMAGING THE MECHANISM OR OPERATING THE SWITCH.

9PA8**M**DRAWING
NUMBER**2**

ISSUE

REPLACES

RELEASE NO.

CHECK

CHECK

6 OCT 83

DEC

CHECK

83

K A G

FO-52880

DRAWN

REVISIONS

| | |
|------------|---|
| A | 8 |
| 52194-0 | |
| K A G | |
| 13 SEPT 83 | |

Mouser Electronics

Authorized Distributor

Click to View Pricing, Inventory, Delivery & Lifecycle Information:

[Honeywell:](#)

[9PA8](#)