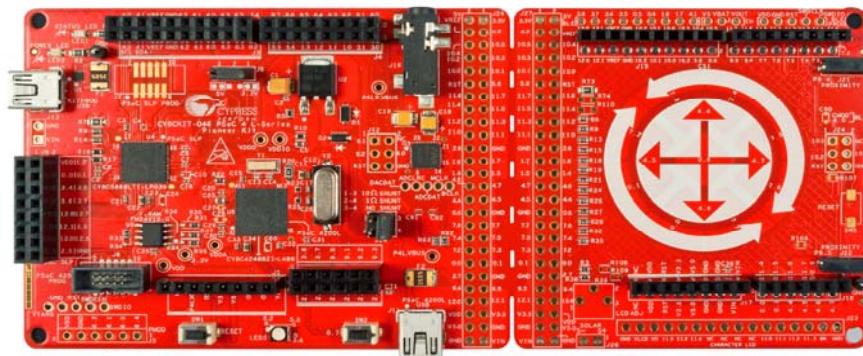




CY8CKIT-046 PSoC® 4 L-Series Pioneer Kit

Last Updated: Jan 12, 2016

Version: **



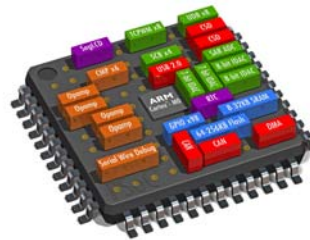
The PSoC® 4 L-Series Pioneer Kit is a low-cost hardware and software platform to enable design and debug of the PSoC 4200L device.

Coming soon!

Featuring PSoC 4200L Device

The PSoC 4 L-Series Pioneer Kit features the PSoC 4200L device - industry's most flexible 32-bit ARM® Cortex®-M0 solution.

The PSoC 4200L device is a member of the PSoC 4 L-Series device family with up to 256KB flash, 98 GPIOs, 13 programmable analog blocks, 20 programmable digital blocks, dual CapSense® hardware blocks, full-speed USB, DMA and CAN.



Industry's Best and Simplest CapSense

The PSoC 4 L-Series Pioneer Kit features a 13-element CapSense Gesture Pad and two CapSense proximity headers that allows you to quickly implement and evaluate touch-based and proximity gestures.

The dual CapSense hardware blocks inside the PSoC 4200L device enables you to scan the CapSense Gesture Pad and the proximity sensors simultaneously.



Industry's First Dual-Arduino Compatible Development Platform

The PSoC 4 L-Series Pioneer Kit is the industry's first development platform that features footprint to connect two Arduino Uno compatible shields side-by-side.

This hardware flexibility allows you to use two user interface shields or two shields sharing the same communication protocols in the same design.



Snap-away Arduino Shield

The PSoC 4 L-Series Pioneer Kit lets you snap-off the extended shield board and use it as an Arduino Shield with any Arduino Uno compatible development kit. The snapped-off shield features a 13-element CapSense Gesture Pad, two proximity headers, footprint for EZ-BLE™ PSoC™ module, Energy Harvesting Power Management IC (PMIC), Serial NOR flash and μ SD card socket.

If you want to use the snapped-off shield back with the PSoC 4 L-Series Pioneer Kit, you can plug it into the Arduino header on the main board or into the 52-pin header on the edge of the main board, enabling you to use the kit with full features, yet again.



Flexible Prototyping

The PSoC 4 L-Series Pioneer Kit features a wide variety of peripherals such as full-speed USB device, stereo codec, 1Mb F-RAM, an RGB LED and footprints for EZ-BLE PSoC module, Energy Harvesting Power Management IC (PMIC), Serial NOR flash, μ SD card socket and a coin cell battery.

Additionally, the kit also includes the Cypress KitProg, an on-board programmer and debugger for the PSoC devices.



Kit Contents:

PSoC 4 L-Series pioneer board

USB standard-A to Mini-B cable

Four jumper wires (4 inches each)

Two proximity sensor wires (5 inches each)

Stereo audio earphone with microphone

Quick Start Guide