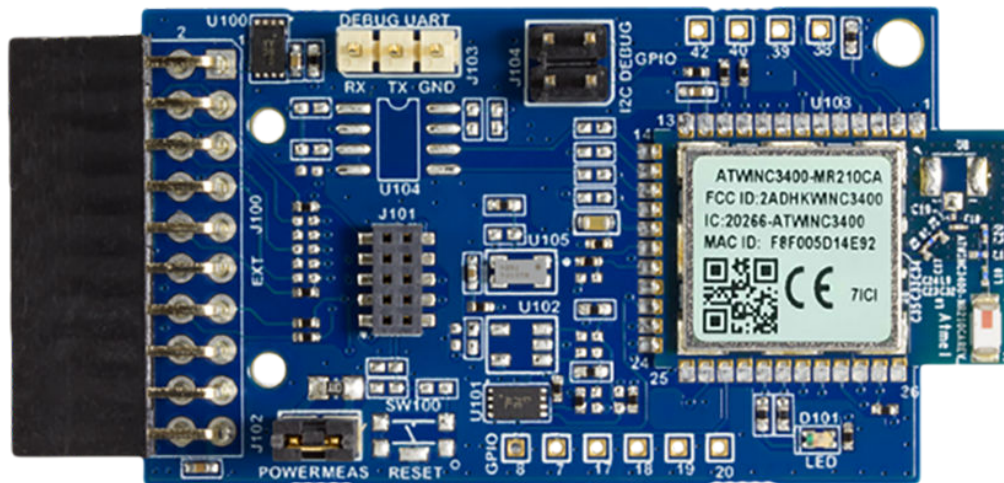

ATWINC3400 Wi-Fi® Network Controller Xplained Pro User Guide

Introduction

The ATWINC3400-XPRO is an extension board used to evaluate the performance of the ATWINC3400-MR210CA, an IEEE® 802.11 b/g/n RF/Baseband/MAC Network Controller with Integrated Low Energy Bluetooth® 5.0 compliant module. The ATWINC3400 Xplained Pro extension is designed to provide Wi-Fi® and Bluetooth functionality in the 2.4 GHz ISM band to the Xplained Pro evaluation platform. This kit provides easy access to the features of the ATWINC3400-MR210CA and explains how to integrate the device in a custom design.



Features

- The **ATWINC3400-MR210CA**: IEEE 802.11 b/g/n Link Controller with Integrated Low Energy Bluetooth 5.0 compliant module features the following:
 - IEEE 802.11 b/g/n 20 MHz (1x1) Wi-Fi solution
 - Single spatial stream, up to 72 Mbps PHY rate in 2.4 GHz ISM band
 - Network features: Firmware version 1.2.x, TCP, UDP, DHCP, ARP, HTTP, SSL, DNS and SNTP
 - Host interface through SPI
 - Bluetooth Low Energy (BLE) 5.0
 - Adaptive Frequency Hopping
 - Host Control Interface (HCI) through high speed UART
 - Integrated PA, T/R switch and chip antenna
 - Superior sensitivity and range
 - On-Chip Network Stack to offload MCU
 - Integrated flash memory for system software
 - I²C and UART host interfaces

- Operating temperature range of -40 to +85°C
- Debug I²C and UART headers
- Current Measurement header
- Optional SPI flash boot
- ATECC508A Crypto Authentication Device
 - Ideal for IoT node security
 - Secure hardware-based Key Storage
 - Internal High-quality FIPS Random Number Generator
- Xplained Pro extension hardware identification system

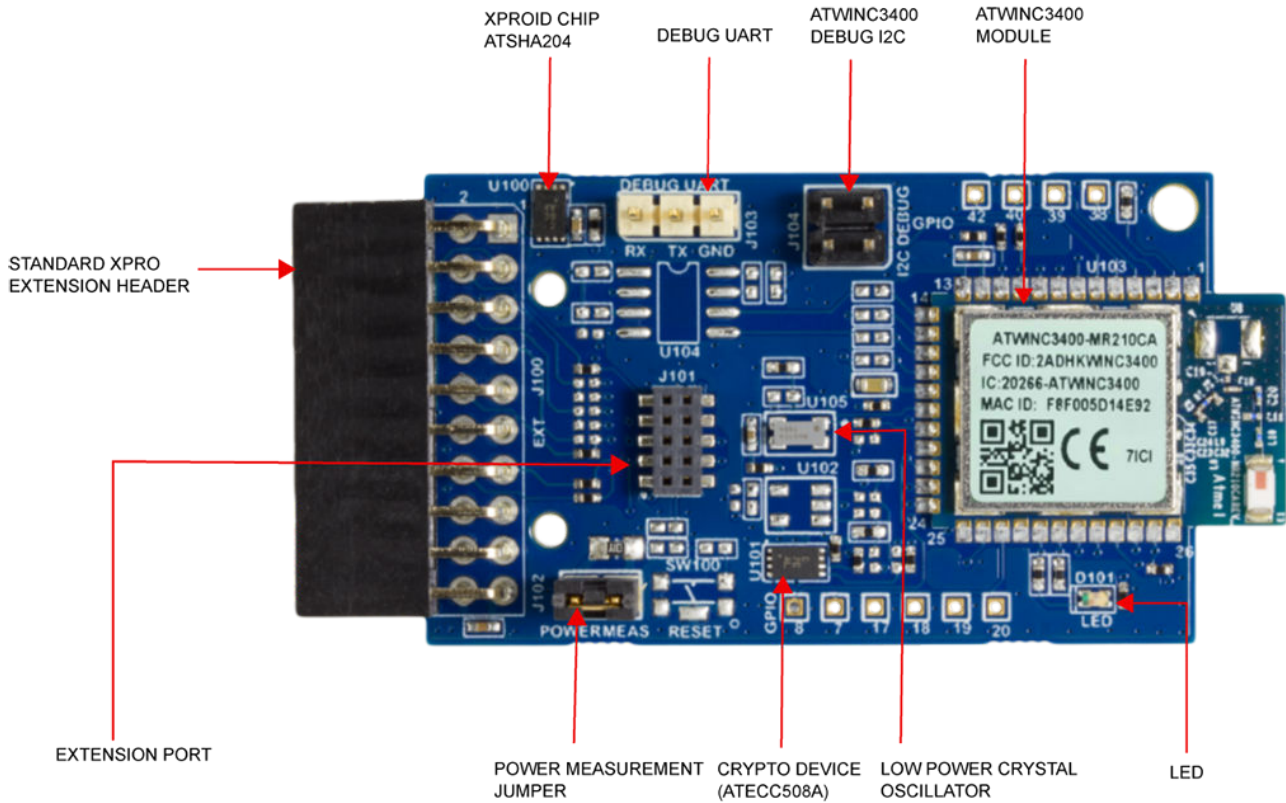
Table of Contents

Introduction.....	1
Features.....	1
1. Kit Overview.....	4
2. Getting Started.....	5
2.1. Xplained Pro Quick Start.....	5
2.2. Design Documentation and Relevant Links.....	5
3. Xplained Pro.....	6
3.1. Hardware Identification System.....	6
3.2. Xplained Pro Standard Extension Header.....	6
4. Hardware Users Guide.....	8
4.1. Headers and Connectors.....	8
4.2. ATWINC3400-XPRO Peripherals.....	10
5. Hardware Revision History and Known Issues.....	12
5.1. Identifying Product ID and Revision.....	12
5.2. Revision.....	12
6. Document Revision History.....	13
The Microchip Website.....	15
Product Change Notification Service.....	15
Customer Support.....	15
Microchip Devices Code Protection Feature.....	15
Legal Notice.....	16
Trademarks.....	16
Quality Management System.....	17
Worldwide Sales and Service.....	18

1. Kit Overview

The ATWINC3400-XPRO is a carrier board for the SmartConnect-ATWINC3400-MR210CA Wi-Fi/Bluetooth Low Energy module for the Xplained Pro platform. It connects to any Xplained Pro standard extension header on any Xplained Pro MCU board to provide Wi-Fi/Bluetooth Low Energy functionality.

Figure 1-1. ATWINC3400-XPRO



2. Getting Started

The ATWINC3400-XPRO has been designed to be connected to an Xplained Pro extension header marked as EXT1. However, it is compatible with all Xplained Pro extension headers. Refer to the pin-out of your Xplained Pro evaluation kit to find out which Xplained Pro extension headers can be used.

2.1 Xplained Pro Quick Start

Steps to start exploring the Xplained Pro platform:

1. Download and install Microchip Studio/MPLAB® X.
2. Launch Microchip Studio/MPLAB® X.

When the Xplained Pro MCU kit is connected to the computer for the first time, the operating system installs the driver software automatically. This driver supports 32-bit and 64-bit versions of Microsoft® Windows® XP, Windows Vista®, Windows 7, Windows 8, Windows 10, and Windows Server 2012.

When the Xplained Pro MCU board is powered, the power LED (green) glows, and Microchip Studio/MPLAB® X automatically detects the specific Xplained Pro MCU and extension board(s) that are connected. The landing page of the kit in the Microchip Studio has an option to launch the Advanced Software Framework (ASF) and the Atmel START example application codes for the kit. The target device is programmed and debugged by the on-board embedded debugger and, therefore, no external programmer or debugger tool is required.

2.2 Design Documentation and Relevant Links

The following list contains the links to the most relevant documents and software for the ATWINC3400-XPRO:

- [Xplained Pro products](#) – Atmel Xplained Pro is a series of small-sized and easy-to-use evaluation kits for Atmel microcontrollers and other Atmel products. It consists of a series of low-cost MCU boards for evaluation and demonstration of features and capabilities of different MCU families.
- [ATWINC3400-XPRO User Guide](#) – Product documents page
- [ATWINC3400-XPRO Design Documentation](#) – Package containing schematics, BOM, assembly drawings, 3D plots, layer plots, etc
- [Microchip Studio/MPLAB® X](#) – Free Microchip IDE for development of C/C++ and assembler code for Microchip microcontrollers
- [EDBG User Guide](#) – User guide containing more information about the on-board Embedded Debugger
- [Atmel Data Visualizer](#) – Atmel Data Visualizer is a program used for processing and visualizing data. The Data Visualizer can receive data from various sources, such as the Embedded Debugger Data Gateway Interface found on the Xplained Pro boards and COM ports.
- [ATWINC3400-XPRO](#) – Product page
- [ATWINC3400-MR210CA](#) – Wireless module data sheet
- [ATWINC3400](#) – Wireless chip data sheet
- [ATWINC3400 BLE Provisioning – Setup and Usage](#) – Application Note
- [ATECC508A-MAHDA-T](#) – Crypto Authentication Device data sheet
- [AT24MAC602-STUM-T](#) – Serial EEPROM data sheet

3. Xplained Pro

Xplained Pro is an evaluation platform containing a series of microcontroller boards (evaluation kits) and extension boards. Microchip Studio/MPLAB® X is used to program and debug the microcontrollers on these boards. Microchip Studio includes Advanced Software Framework (ASF) and Atmel START which has drivers, demo code, and Data Visualizer that supports data streaming and advanced debugging. Xplained Pro evaluation kits can be connected to a wide range of Xplained Pro extension boards through standardized headers and connectors. Xplained Pro extension boards have identification (ID) chips to uniquely identify which boards are connected to the Xplained Pro evaluation kits.

3.1 Hardware Identification System

All Xplained Pro extension boards come with an identification chip (ATSHA204A CryptoAuthentication™ chip) to uniquely identify the boards that are connected to the Xplained Pro Evaluation Kit. This chip contains information that identifies the extension with its name and some extra data. When an Xplained Pro extension is connected to an Xplained Pro Evaluation Kit, the information is read and sent to the Microchip Studio/MPLAB® X. The following table shows the data fields stored in the ID chip with example content.

Table 3-1. Xplained Pro ID Chip Content

Data Field	Data Type	Example Content
Manufacturer	ASCII string	Microchip\0'
Product name	ASCII string	Segment LCD1 Xplained Pro\0'
Product revision	ASCII string	02\0'
Product serial number	ASCII string	1774020200000010\0'
Minimum voltage [mV]	uint16_t	3000
Maximum voltage [mV]	uint16_t	3600
Maximum current [mA]	uint16_t	30

3.2 Xplained Pro Standard Extension Header

All Xplained Pro kits have many dual-row, 20-pin, 100 mil extension headers. The Xplained Pro MCU boards have male headers, while the Xplained Pro extensions have their female counterparts. The following table provides the pin description of all the connected pins.



Info: Not all pins are always connected to all extension headers.

The extension headers can be used to connect a variety of Xplained Pro extensions to Xplained Pro MCU boards or to access the pins of the target microcontroller on the Xplained Pro boards.

Table 3-2. Xplained Pro Standard Extension Header

Pin Number	Pin Name	Description
1	ID	Pin to communicate with the ID chip on an extension board.
2	GND	Ground.
3	ADC(+)	Analog-to-Digital Converter; alternatively, a pin for the positive terminal of a differential ADC.

.....continued

Pin Number	Pin Name	Description
4	ADC(-)	Analog-to-Digital Converter; alternatively, a pin for the negative terminal of a differential ADC.
5	GPIO1	General purpose I/O pin.
6	GPIO2	General purpose I/O pin.
7	PWM(+)	Pulse-Width Modulation; alternatively, a pin for the positive part of a differential PWM.
8	PWM(-)	Pulse-Width Modulation; alternatively, a pin for the negative part of a differential PWM.
9	IRQ/GPIO	Interrupt request pin and/or general purpose I/O pin.
10	SPI_SS_B/GPIO	Client select pin for Serial Peripheral Interface (SPI) and/or general purpose I/O pin.
11	I ² C_SDA	Data pin for I ² C interface. Always connected, bus type.
12	I ² C_SCL	Clock pin for I ² C interface. Always connected, bus type.
13	UART_RX	Receiver pin of target device UART.
14	UART_TX	Transmitter pin of target device UART.
15	SPI_SS_A	Client select for SPI. This pin should preferably not be connected to anything else.
16	SPI_MOSI	SPI host out, client in pin. Always connected, bus type.
17	SPI_MISO	SPI host in, client out pin. Always connected, bus type.
18	SPI_SCK	SPI clock pin. Always connected, bus type.
19	GND	Ground pin for extension boards.
20	VCC	Power pin for extension boards.

4. Hardware Users Guide

4.1 Headers and Connectors

4.1.1 ATWINC3400-XPRO Extension Header

The ATWINC3400-XPRO implements one Xplained Pro Standard Extension Header marked with EXT in PCB silkscreen. This header makes it possible to connect the board to any Xplained Pro MCU board. The pin-out definition for the extension header is below.

Table 4-1. ATWINC3400-XPRO Extension Connector

Pin on EXT	Function	Description
1	ID_DATA	Communication line to ID chip
2	GND	Ground
3	HOST_WAKEUP	Wake-up signal to the host from wireless module
4	RESET_N	Reset signal from Xpro's host MCU
5	UART_RTS	Request To Send (RTS) for 4-pin UART interface flow control/handshaking
6	UART_CTS	Clear To Send (CTS) for 4-pin UART interface flow control/handshaking
7	CHIP_EN	Secondary optional Chip enable signal for wireless module from host MCU of an XPRO in which pin 10 of EXT header can't be used for chip enable.
8	RTC_MCU	Real-time clock from Host MCU. It is the secondary clock source. The primary clock is from the on-board RTC oscillator.
9	IRQN	Interrupt request to host
10	CHIP_EN	Primary chip enable signal for wireless module from host MCU
11	I2C_SDA_S	Data line for client I ² C interface to ECC508
12	I2C_SCL_S	Clock line for client I ² C interface to ECC508
13	BT_UART1_TXD	Transmit pin of wireless module's UART interface
14	BT_UART1_RXD	Receive pin of wireless module's UART interface
15	SPI_SSN_WiFi	Client select/Chip select signal of client SPI interface for Wi-Fi
16	SPI_MOSI_WiFi	Host out, client in signal of client SPI interface for Wi-Fi
17	SPI_MISO_WiFi	Host in, client out signal of client SPI interface for Wi-Fi
18	SPI_SCK_WiFi	Clock line of client SPI interface for Wi-Fi
19	GND	Ground
20	VCC_TARGET	Target +3.3V supply voltage from host MCU board

4.1.2 Power Measurement Header

Current measurement header (J102) can be used to measure the total current consumed by the ATWINC3400-MR210CA module using a voltmeter. To measure the total current consumption of the module, remove the jumper from J102 and connect a voltmeter across its pins. A 1Ω resistor available on board across the jumper gives a 1:1 relationship between voltage drop and current consumption.

There are two 0Ω resistors, R135 and R136, that can be removed one by one to connect the ammeter across the corresponding resistor pads to measure the current consumed by individual power rails of the ATWINC3400-MR210CA, VBAT and VDDIO respectively.

4.1.3 Debug Connectors

Debug I²C Header (J104) is mounted on the board. The connector and module pinouts are given below. This I²C connector is only for development debug. An I²C/SPI Host Adapter like **Aardvark** is required to connect J104 with PC GUI to program and debug.

Table 4-2. Debug I²C Connector J104

Pin on I ² C connector	Pin on ATWINC3400-MR210CA module	Function
1	11	I ² C SCL
2	1	Ground
3	10	I ² C SDA
4	—	Not Connected

Debug UART Header (J103) is mounted on the board. This connector is for debug using this UART. A USB high speed to UART Cable like **FTDI** is required to connect J103 with PC to print debug log. The connector and module pinouts are given below.

Note: Remove R143 and R144 resistors for enabling the debug I2C Interface.

Table 4-3. Debug UART Connector J103

Pin on UART Connector	Pin on ATWINC3400-MR210CA module	Function
1	17	WiFi_UART_RXD
2	16	WiFi_UART_TXD
3	1	Ground

I²C and UART pins of wireless module are connected with Extension port receptacle J101. The connector can be used for connecting extension board or Debug purpose.

Table 4-4. Extension Port / Debug Connector J101

Pin on Extension Port	Pin on ATWINC3400-MR210CA module	Function
1	10	I2C_SDA_S
2	—	NC
3	11	I2C_SCL_S
4	9	BT_UART_RXD
5	1	GND
6	8	BT_UART_TXD
7	—	NC
8	1	GND
9	7	RESET_N
10	12 and 18	VCC_MODULE (+3.3V)

4.2 ATWINC3400-XPRO Peripherals

4.2.1 Serial Flash

The ATWINC3400-XPRO features an external SPI Flash. The host SPI interface of the ATWINC3400 is used for communication with the Flash. The provision to assemble the Flash on the PCB is given; however, the device is not mounted on the board (Part number- AT25DF081A-SSH-T, Reference number - U104).

Table 4-5. Serial Flash Connections

Pin on ATWINC3400-MR210CA module	Function
14	SPI SCK
16	SPI MOSI
17	SPI MISO
15	SPI SS

4.2.2 LED

There is a dual green/red LED on the ATWINC3400-XPRO extension board that is controlled by the ATWINC3400-MR210CA. These LEDs are used to show the application status.

Table 4-6. LED Connection

Pin on ATWINC3400-MR210CA module	Function
29	Green LED
30	Red LED

4.2.3 Crypto Device

The ATWINC3400-XPRO features an ATECC508A CryptoAuthentication device. The device is mounted on the board (Part number- ATECC508A-MAHDA-T, Reference number - U101). The primary connection of the device with the host MCU is through an I²C interface available at the 20 pin header . The host I²C interface of the ATWINC3400 was provided as an optional secondary I²C communication interface with the crypto device.

Table 4-7. ATECC508A Connections

Pin on ATWINC3400-MR210CA module	Function
35	I ² C data
34	I ² C clock

4.2.4 EEPROM

The ATWINC3400-XPRO features an external EEPROM. The host I²C interface of the ATWINC3400 is used for communication with the EEPROM. The provision to assemble the EEPROM is given; however, the device is not mounted in-board (Part number- AT24MAC602-STUM-T, Reference number - U102) .

Table 4-8. EEPROM Connections

Pin on ATWINC3400-MR210CA module	Function
35	I ² C data
34	I ² C clock

4.2.5 Test Points

Some test points are available for use on the board. TP101 and TP103 can be used in addition with SPI interface lines for SDIO interface which needs some hardware rework. TP103, TP104, TP105 and TP106 can be used for PCM interface by appropriately disconnecting the multiplexed alternate functionality. TP107, TP108, TP109 and TP110 pins are GPIO38, 39, 40 and 42 pins of the ATWINC3400 chip respectively.

Table 4-9. Test Point Connections

Test Point	Pin on ATWINC3400-MR210CA module	Function
TP101	22	GPIO8; Pin multiplexed with optional BT_UART1_CTS2
TP102	27	GPIO7; Pin multiplexed with optional BT_UART1_RTS2
TP103	29	GPIO17; Pin multiplexed with dual LED D101 (Green)
TP104	30	GPIO18; Pin multiplexed with dual LED D101 (Red)
TP105	31	GPIO19
TP106	32	GPIO20

5. Hardware Revision History and Known Issues

5.1 Identifying Product ID and Revision

The revision and product identifier of the ATWINC3400-XPRO can be found by looking at the sticker on the bottom side of the PCB. The identifier and revision are printed in plain text as A09-nnnn\rr, where nnnn is the identifier and rr is the revision. The label also contains a 10-digit serial number unique to each board.

The product identifier for the ATWINC3400-XPRO is A09-2623.

5.2 Revision

Revision 5 was the initially released revision. Revision 6 is the latest revision, and there are no known issues.

6. Document Revision History

Revision	Date	Section	Description
B	08/2021	Document	Minor edits
		Introduction	Updated the version of Bluetooth Low Energy
		Features	Updated the version of Bluetooth Low Energy
		1. Kit Overview	Changed BLE to Bluetooth Low Energy as per edit standards
		2.1 Xplained Pro Quick Start	Selected latest version for changing Atmel Studio to Microchip Studio
		2.2 Design Documentation and Relevant Links	Updated for changing Atmel Studio to Microchip Studio
		3. Xplained Pro	Selected latest version for changing Atmel Studio to Microchip Studio
		3.1 Hardware Identification System	Selected latest version for changing Atmel Studio to Microchip Studio
		3.2 Xplained Pro Standard Extension Header	Updated with the new terminologies; for more details, see the below note
		4.1.1 ATWINC3400-XPRO Extension Header	Updated with the new terminologies; for more details, see the below note
		4.2.1 Serial Flash	Updated with the new terminologies; for more details, see the below note
		4.2.3 Crypto Device	Updated with the new terminologies; for more details, see the below note
4.2.4 EEPROM	Updated with the new terminologies; for more details, see the below note		
A	11/2017	Document	Initial Revision
			<ul style="list-style-type: none"> • Updated from Atmel to Microchip template • Previous version is Atmel 42690 revision A

Note: Microchip is aware that some terminologies used in the technical documents and existing software codes of this product are outdated and unsuitable. This document may use these new terminologies, which may or may not reflect on the source codes, software GUIs, and the documents referenced within this document. The following table shows the relevant terminology changes made in this document.

Table 6-1. Terminology Related Changes

Old Terminology	New Terminology	Section
Master	Host	The following sections are updated with new terminology: <ul style="list-style-type: none">• 3.2 Xplained Pro Standard Extension Header• 4.1.1 ATWINC3400-XPRO Extension Header• 4.2.1 Serial Flash• 4.2.3 Crypto Device• 4.2.4 EEPROM
Slave	Client	

The Microchip Website

Microchip provides online support via our website at www.microchip.com/. This website is used to make files and information easily available to customers. Some of the content available includes:

- **Product Support** – Data sheets and errata, application notes and sample programs, design resources, user's guides and hardware support documents, latest software releases and archived software
- **General Technical Support** – Frequently Asked Questions (FAQs), technical support requests, online discussion groups, Microchip design partner program member listing
- **Business of Microchip** – Product selector and ordering guides, latest Microchip press releases, listing of seminars and events, listings of Microchip sales offices, distributors and factory representatives

Product Change Notification Service

Microchip's product change notification service helps keep customers current on Microchip products. Subscribers will receive email notification whenever there are changes, updates, revisions or errata related to a specified product family or development tool of interest.

To register, go to www.microchip.com/pcn and follow the registration instructions.

Customer Support

Users of Microchip products can receive assistance through several channels:

- Distributor or Representative
- Local Sales Office
- Embedded Solutions Engineer (ESE)
- Technical Support

Customers should contact their distributor, representative or ESE for support. Local sales offices are also available to help customers. A listing of sales offices and locations is included in this document.

Technical support is available through the website at: www.microchip.com/support

Microchip Devices Code Protection Feature

Note the following details of the code protection feature on Microchip devices:

- Microchip products meet the specifications contained in their particular Microchip Data Sheet.
- Microchip believes that its family of products is secure when used in the intended manner and under normal conditions.
- There are dishonest and possibly illegal methods being used in attempts to breach the code protection features of the Microchip devices. We believe that these methods require using the Microchip products in a manner outside the operating specifications contained in Microchip's Data Sheets. Attempts to breach these code protection features, most likely, cannot be accomplished without violating Microchip's intellectual property rights.
- Microchip is willing to work with any customer who is concerned about the integrity of its code.
- Neither Microchip nor any other semiconductor manufacturer can guarantee the security of its code. Code protection does not mean that we are guaranteeing the product is "unbreakable." Code protection is constantly evolving. We at Microchip are committed to continuously improving the code protection features of our products. Attempts to break Microchip's code protection feature may be a violation of the Digital Millennium Copyright Act. If such acts allow unauthorized access to your software or other copyrighted work, you may have a right to sue for relief under that Act.

Legal Notice

Information contained in this publication is provided for the sole purpose of designing with and using Microchip products. Information regarding device applications and the like is provided only for your convenience and may be superseded by updates. It is your responsibility to ensure that your application meets with your specifications.

THIS INFORMATION IS PROVIDED BY MICROCHIP "AS IS". MICROCHIP MAKES NO REPRESENTATIONS OR WARRANTIES OF ANY KIND WHETHER EXPRESS OR IMPLIED, WRITTEN OR ORAL, STATUTORY OR OTHERWISE, RELATED TO THE INFORMATION INCLUDING BUT NOT LIMITED TO ANY IMPLIED WARRANTIES OF NON-INFRINGEMENT, MERCHANTABILITY, AND FITNESS FOR A PARTICULAR PURPOSE OR WARRANTIES RELATED TO ITS CONDITION, QUALITY, OR PERFORMANCE.

IN NO EVENT WILL MICROCHIP BE LIABLE FOR ANY INDIRECT, SPECIAL, PUNITIVE, INCIDENTAL OR CONSEQUENTIAL LOSS, DAMAGE, COST OR EXPENSE OF ANY KIND WHATSOEVER RELATED TO THE INFORMATION OR ITS USE, HOWEVER CAUSED, EVEN IF MICROCHIP HAS BEEN ADVISED OF THE POSSIBILITY OR THE DAMAGES ARE FORESEEABLE. TO THE FULLEST EXTENT ALLOWED BY LAW, MICROCHIP'S TOTAL LIABILITY ON ALL CLAIMS IN ANY WAY RELATED TO THE INFORMATION OR ITS USE WILL NOT EXCEED THE AMOUNT OF FEES, IF ANY, THAT YOU HAVE PAID DIRECTLY TO MICROCHIP FOR THE INFORMATION. Use of Microchip devices in life support and/or safety applications is entirely at the buyer's risk, and the buyer agrees to defend, indemnify and hold harmless Microchip from any and all damages, claims, suits, or expenses resulting from such use. No licenses are conveyed, implicitly or otherwise, under any Microchip intellectual property rights unless otherwise stated.

Trademarks

The Microchip name and logo, the Microchip logo, Adaptec, AnyRate, AVR, AVR logo, AVR Freaks, BesTime, BitCloud, chipKIT, chipKIT logo, CryptoMemory, CryptoRF, dsPIC, FlashFlex, flexPWR, HELDO, IGLOO, JukeBlox, KeeLoq, Klear, LANCheck, LinkMD, maXStylus, maXTouch, MediaLB, megaAVR, Microsemi, Microsemi logo, MOST, MOST logo, MPLAB, OptoLyzer, PackeTime, PIC, picoPower, PICSTART, PIC32 logo, PolarFire, Prochip Designer, QTouch, SAM-BA, SenGenuity, SpyNIC, SST, SST Logo, SuperFlash, Symmetricom, SyncServer, Tachyon, TimeSource, tinyAVR, UNI/O, Vectron, and XMEGA are registered trademarks of Microchip Technology Incorporated in the U.S.A. and other countries.

AgileSwitch, APT, ClockWorks, The Embedded Control Solutions Company, EtherSynch, FlashTec, Hyper Speed Control, HyperLight Load, IntelliMOS, Libero, motorBench, mTouch, Powermite 3, Precision Edge, ProASIC, ProASIC Plus, ProASIC Plus logo, Quiet-Wire, SmartFusion, SyncWorld, Temux, TimeCesium, TimeHub, TimePictra, TimeProvider, WinPath, and ZL are registered trademarks of Microchip Technology Incorporated in the U.S.A.

Adjacent Key Suppression, AKS, Analog-for-the-Digital Age, Any Capacitor, AnyIn, AnyOut, Augmented Switching, BlueSky, BodyCom, CodeGuard, CryptoAuthentication, CryptoAutomotive, CryptoCompanion, CryptoController, dsPICDEM, dsPICDEM.net, Dynamic Average Matching, DAM, ECAN, Espresso T1S, EtherGREEN, IdealBridge, In-Circuit Serial Programming, ICSP, INICnet, Intelligent Paralleling, Inter-Chip Connectivity, JitterBlocker, maxCrypto, maxView, memBrain, Mindi, MiWi, MPASM, MPF, MPLAB Certified logo, MPLIB, MPLINK, MultiTRAK, NetDetach, Omniscient Code Generation, PICDEM, PICDEM.net, PICKit, PICtail, PowerSmart, PureSilicon, QMatrix, REAL ICE, Ripple Blocker, RTAX, RTG4, SAM-ICE, Serial Quad I/O, simpleMAP, SimpliPHY, SmartBuffer, SMART-I.S., storClad, SQL, SuperSwitcher, SuperSwitcher II, Switchtec, SynchroPHY, Total Endurance, TSHARC, USBCheck, VariSense, VectorBlox, VeriPHY, ViewSpan, WiperLock, XpressConnect, and ZENA are trademarks of Microchip Technology Incorporated in the U.S.A. and other countries.

SQTP is a service mark of Microchip Technology Incorporated in the U.S.A.

The Adaptec logo, Frequency on Demand, Silicon Storage Technology, and Symmcom are registered trademarks of Microchip Technology Inc. in other countries.

GestIC is a registered trademark of Microchip Technology Germany II GmbH & Co. KG, a subsidiary of Microchip Technology Inc., in other countries.

All other trademarks mentioned herein are property of their respective companies.

© 2017-2021, Microchip Technology Incorporated, Printed in the U.S.A., All Rights Reserved.

ISBN: 978-1-5224-8632-9

Quality Management System

For information regarding Microchip's Quality Management Systems, please visit www.microchip.com/quality.

Worldwide Sales and Service

AMERICAS	ASIA/PACIFIC	ASIA/PACIFIC	EUROPE
<p>Corporate Office 2355 West Chandler Blvd. Chandler, AZ 85224-6199 Tel: 480-792-7200 Tel: 480-792-7277 Technical Support: www.microchip.com/support Web Address: www.microchip.com</p> <p>Atlanta Duluth, GA Tel: 678-957-9614 Fax: 678-957-1455</p> <p>Austin, TX Tel: 512-257-3370</p> <p>Boston Westborough, MA Tel: 774-760-0087 Fax: 774-760-0088</p> <p>Chicago Itasca, IL Tel: 630-285-0071 Fax: 630-285-0075</p> <p>Dallas Addison, TX Tel: 972-818-7423 Fax: 972-818-2924</p> <p>Detroit Novi, MI Tel: 248-848-4000</p> <p>Houston, TX Tel: 281-894-5983</p> <p>Indianapolis Noblesville, IN Tel: 317-773-8323 Fax: 317-773-5453 Tel: 317-536-2380</p> <p>Los Angeles Mission Viejo, CA Tel: 949-462-9523 Fax: 949-462-9608 Tel: 951-273-7800</p> <p>Raleigh, NC Tel: 919-844-7510</p> <p>New York, NY Tel: 631-435-6000</p> <p>San Jose, CA Tel: 408-735-9110 Tel: 408-436-4270</p> <p>Canada - Toronto Tel: 905-695-1980 Fax: 905-695-2078</p>	<p>Australia - Sydney Tel: 61-2-9868-6733</p> <p>China - Beijing Tel: 86-10-8569-7000</p> <p>China - Chengdu Tel: 86-28-8665-5511</p> <p>China - Chongqing Tel: 86-23-8980-9588</p> <p>China - Dongguan Tel: 86-769-8702-9880</p> <p>China - Guangzhou Tel: 86-20-8755-8029</p> <p>China - Hangzhou Tel: 86-571-8792-8115</p> <p>China - Hong Kong SAR Tel: 852-2943-5100</p> <p>China - Nanjing Tel: 86-25-8473-2460</p> <p>China - Qingdao Tel: 86-532-8502-7355</p> <p>China - Shanghai Tel: 86-21-3326-8000</p> <p>China - Shenyang Tel: 86-24-2334-2829</p> <p>China - Shenzhen Tel: 86-755-8864-2200</p> <p>China - Suzhou Tel: 86-186-6233-1526</p> <p>China - Wuhan Tel: 86-27-5980-5300</p> <p>China - Xian Tel: 86-29-8833-7252</p> <p>China - Xiamen Tel: 86-592-2388138</p> <p>China - Zhuhai Tel: 86-756-3210040</p>	<p>India - Bangalore Tel: 91-80-3090-4444</p> <p>India - New Delhi Tel: 91-11-4160-8631</p> <p>India - Pune Tel: 91-20-4121-0141</p> <p>Japan - Osaka Tel: 81-6-6152-7160</p> <p>Japan - Tokyo Tel: 81-3-6880-3770</p> <p>Korea - Daegu Tel: 82-53-744-4301</p> <p>Korea - Seoul Tel: 82-2-554-7200</p> <p>Malaysia - Kuala Lumpur Tel: 60-3-7651-7906</p> <p>Malaysia - Penang Tel: 60-4-227-8870</p> <p>Philippines - Manila Tel: 63-2-634-9065</p> <p>Singapore Tel: 65-6334-8870</p> <p>Taiwan - Hsin Chu Tel: 886-3-577-8366</p> <p>Taiwan - Kaohsiung Tel: 886-7-213-7830</p> <p>Taiwan - Taipei Tel: 886-2-2508-8600</p> <p>Thailand - Bangkok Tel: 66-2-694-1351</p> <p>Vietnam - Ho Chi Minh Tel: 84-28-5448-2100</p>	<p>Austria - Wels Tel: 43-7242-2244-39 Fax: 43-7242-2244-393</p> <p>Denmark - Copenhagen Tel: 45-4485-5910 Fax: 45-4485-2829</p> <p>Finland - Espoo Tel: 358-9-4520-820</p> <p>France - Paris Tel: 33-1-69-53-63-20 Fax: 33-1-69-30-90-79</p> <p>Germany - Garching Tel: 49-8931-9700</p> <p>Germany - Haan Tel: 49-2129-3766400</p> <p>Germany - Heilbronn Tel: 49-7131-72400</p> <p>Germany - Karlsruhe Tel: 49-721-625370</p> <p>Germany - Munich Tel: 49-89-627-144-0 Fax: 49-89-627-144-44</p> <p>Germany - Rosenheim Tel: 49-8031-354-560</p> <p>Israel - Ra'anana Tel: 972-9-744-7705</p> <p>Italy - Milan Tel: 39-0331-742611 Fax: 39-0331-466781</p> <p>Italy - Padova Tel: 39-049-7625286</p> <p>Netherlands - Drunen Tel: 31-416-690399 Fax: 31-416-690340</p> <p>Norway - Trondheim Tel: 47-72884388</p> <p>Poland - Warsaw Tel: 48-22-3325737</p> <p>Romania - Bucharest Tel: 40-21-407-87-50</p> <p>Spain - Madrid Tel: 34-91-708-08-90 Fax: 34-91-708-08-91</p> <p>Sweden - Gothenberg Tel: 46-31-704-60-40</p> <p>Sweden - Stockholm Tel: 46-8-5090-4654</p> <p>UK - Wokingham Tel: 44-118-921-5800 Fax: 44-118-921-5820</p>